

Product datasheet for **RR203387**

Dkk3 (NM_138519) Rat Tagged ORF Clone

Product data:

Product Type: Expression Plasmids
Product Name: Dkk3 (NM_138519) Rat Tagged ORF Clone
Tag: Myc-DDK
Symbol: Dkk3
Synonyms: p29; Reic
Vector: pCMV6-Entry (PS100001)
E. coli Selection: Kanamycin (25 ug/mL)
Cell Selection: Neomycin
ORF Nucleotide Sequence: >RR203387 representing NM_138519
Red=Cloning site Blue=ORF Green=Tags(s)

TTTTGTAATACGACTCACTATAGGGCGCCGGGAATTCGTCGACTGGATCCGGTACCGAGGAGATCTGCC
GCC**GCGATCGCC**

ATGCAGTGGCTCCGGATATTTGCTGTGTATGCTGCTAGCGGGTGGTCCCCACTGCCCCACTCCTG
CCCCGACGGCCACTTGGACTCCGGCAGAGCCGGGCCGGCTCTTAACCTCAGGAGGAAGCTACGCT
CAATGAGATGTTCCGAGAGGTAGAGGAGCTGATGGAAGACTCAGCACAACTGCGCAGCGGGTGGAG
GAGATGGAGGCGGAAGAAGCGGCTGCTAGAACCTCTGAGGTGACCCTGTCAAGTTTACTGCGCAACT
ACCACAACGAGACCAACACGGAGACCAGGATGGAATAACACAGCCCATGTGCACCGGGAGGTTCAAA
GATAACCAACAACCAGAGTGGACAGACGGTCTTTTCTGAGACAGTCAATACATCTGTAGAGGATGGAGAA
GGCAAGAAGAGCCATGAATGTATCATTGATGAGGACTGCGGACCCACCAGGACTGCCAGTTCTCCAGCT
TCAAGTATACCTGCCAGCCGTGCCGGGACCAGCAGATGCTATGCACCCGAGACAGTGAAGTGTGGAGA
CCAGCTTTGTGCCTGGGGTCACTGCACCCAAAAGGCCACCAAGGTAGCAATGGGACCATCTGTGACAAC
CAGAGGGATTGCCAGCTGGCCTGTGCTGCGCCTTCCAAGAGGCCTGCTGTTCCCTGTGTGCACACCCC
TGCCCGTGGAGGGGAGCTCTGTCATGACCCACCAGCCAGATGCTGGACCTCATCACCTGGGAAGTGA
GCCTGAAGGCGCTTTGGACCGATGCCCTGTGCCAGTGGCCTCCTCTGCCAGCCACACAGCCACAGTCTG
GTATACATGTGCAAGCCAGCCTTCGTTGGCAGCCATGACCACAATGAGGAGAGCCAGCTGCCAGGGAGG
CCCTGGATGACTACGAAGATGTTGGCTTCATAGGGGAGGTGCGTCAGGAGCTGGAAGACCTGGAGCGGAG
CCTGGCCAGGAGATGGCATTGAGGAGGCCACCCTGTGGATCACTAGGTGGAGAGAAGATT

ACGCGTACGCGGCCGCTCGAGCAGAACTCATCTCAGAAGAGGATCTGGCAGCAATGATATCCTGGATT
ACAAGGATGACGACGATAAGGTTTAA



[View online »](#)

Protein Sequence: >RR203387 representing NM_138519
 Red=Cloning site Green=Tags(s)

MQWLRDILLCMLLAAVVPTAPTAPTATWTPAEPGALNYPQEEATLNEMFREVEELMEDTQHKLRS
 EMEAEAAARTSSEVTLSSLPANYHNETNTETRMENNTAHVHREVHKITNNQSGQTVFSETVITS
 VEDGE GKKSHCEIIDEDCGPTRYCQFSSFYKTCQPCRDQQMLCTRSECCGDQLCAWGHCTQ
 KATKGSNGTICDN QRDCQPGLCCAFQRGLLFPVCTPLPVEGELCHDPTSQMLDLITWELEPE
 GALDRPCASGLLCQPHSHSL VYMCKPAFVGSDDHNEESQLPREALDDYEDVGF IGEVRQEL
 EDLERSLAQEMAFEEATPVDSLGGKEI

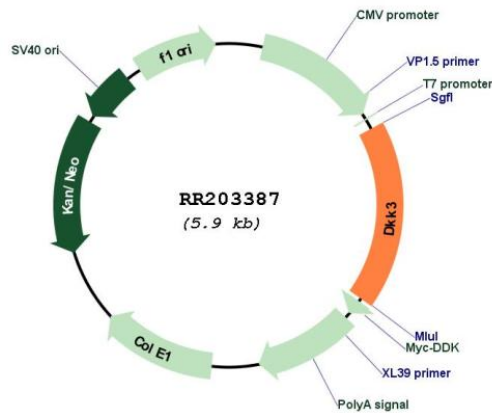
TRTRPLEQKLISEEDLAANDILDYKDDDDKV

Restriction Sites: SgfI-MluI

Cloning Scheme:



Plasmid Map:



ACCN: NM_138519

ORF Size: 1044 bp

OTI Disclaimer:	The molecular sequence of this clone aligns with the gene accession number as a point of reference only. However, individual transcript sequences of the same gene can differ through naturally occurring variations (e.g. polymorphisms), each with its own valid existence. This clone is substantially in agreement with the reference, but a complete review of all prevailing variants is recommended prior to use. More info
OTI Annotation:	This clone was engineered to express the complete ORF with an expression tag. Expression varies depending on the nature of the gene.
Components:	The ORF clone is ion-exchange column purified and shipped in a 2D barcoded Matrix tube containing 10ug of transfection-ready, dried plasmid DNA (reconstitute with 100 ul of water).
Reconstitution Method:	<ol style="list-style-type: none">1. Centrifuge at 5,000xg for 5min.2. Carefully open the tube and add 100ul of sterile water to dissolve the DNA.3. Close the tube and incubate for 10 minutes at room temperature.4. Briefly vortex the tube and then do a quick spin (less than 5000xg) to concentrate the liquid at the bottom.5. Store the suspended plasmid at -20°C. The DNA is stable for at least one year from date of shipping when stored at -20°C.
RefSeq:	NM_138519.2 , NP_612528.2
RefSeq Size:	5010 bp
RefSeq ORF:	1047 bp
Locus ID:	171548
Cytogenetics:	1q33
MW:	38.7 kDa