

Product datasheet for **RR203382**

Nme7 (NM_138532) Rat Tagged ORF Clone

Product data:

Product Type:	Expression Plasmids
Product Name:	Nme7 (NM_138532) Rat Tagged ORF Clone
Tag:	Myc-DDK
Symbol:	Nme7
Synonyms:	Nm23-r7
Vector:	pCMV6-Entry (PS100001)
E. coli Selection:	Kanamycin (25 ug/mL)
Cell Selection:	Neomycin
ORF Nucleotide Sequence:	>RR203382 representing NM_138532 Red=Cloning site Blue=ORF Green=Tags(s)

TTTTGTAATACGACTCACTATAGGGCGGCCGGAATTCGTCGACTGGATCCGGTACCGAGGAGATCTGCC
GCC**GCGATCGCC**

ATGAAAGCTGGTCAGCAGGGAAGAAGTTGCGGTTTGATTTCTCCGATCTTGCACCCAAGAATCAGAGTG
AGAGGTTTGTTCATTGCAGAGTGGTATGACCCAATGCTTCACTGCTCCGACGCTATGAGCTTCTGTA
CTACCCGGTAGATGGATCTGTTGAAATGCATGATGTCAAGAATCGTCGCACCTTCTTAAAGCGGACCAAG
TATGAGGACCTGCGCGTGAAGATTTATTTATAGGCAACAAAGTCAATGTGTTTTCTCGACAGCTGGTGC
TGATTGACTATGGGGACAGTACACAGCCCGCCAGCTGGGCAGCAGGAAAAGAGAAAACTTTAGCCCTCAT
CAAACCGGATGCAGTATCGAAGGCTGGAGAAATCATTGAGATGATAAACAAAAGTGGGTTCACTATAACC
AACTCCGAATGATGACGCTGTCAAGGAAAGAAGCAGCAGACTTTCATGTAGACCACCACTCAAGGCCTT
TTTATAACGAATGATCCAGTTTATCACAAGTGGGCTGTTATTGCCATGGAGATCTTGAGAGATGATGC
CATATGTGAGTGGAAAAGTTGCTTGGACCCGCAAACTCTGGGATAGCGCGTTGAGAAGCCCCGGGAAGC
GTCCGAGCCCTCTTTGGGACAGATGGCATAAGAAATGCGGCTCACGGCTCTGATACTTTTGAGTCCGCTG
CCAGAGAAATGGAATTATTTTTCCCTCCAGTGGAGGCTGTGGCCCAACAACACTGCTAAATTTACCAA
TTGTACCTGCTGCATTATCAAGCCCATGCTATCAGTGAAGGAATGTTGGGAAAGATTTTAAATAGCTATT
CGAGATGCATGCTTTGAGATCTCAGCAATACAGATGTTCAATATGGATCGAGCTAATGTTGAAGAATTCT
ATGAAGTCTATAAAGGTGTACTGTCCGATTATAATGACATGGTGACAGAGCTGTACTCCGGCCCTTGCGT
AGCAATAGAGATCCAGCAGAGCAATCCTACGAAGACGTTCCGAGAATTCTGTGGACCTTCCGATCTGAA
ATCGCCAGGCATTTACGACCTGAGACCCTCAGGGCAAATTTGGTAAAACCAAGGTTCAAATGCTGTTCC
ATTGTACAGATCTGCCAGAGGATGGGCTCTGGAGGTCCAGTATTTCTTCAAGATCTTGGATAAT

ACGCGTACGCGGCCGCTCGAGCAGAAACTCATCTCAGAAGAGGATCTGGCAGCAAATGATATCCTGGATT
ACAAGGATGACGACGATAAGGTTTAA



[View online »](#)

Protein Sequence: >RR203382 representing NM_138532
 Red=Cloning site Green=Tags(s)

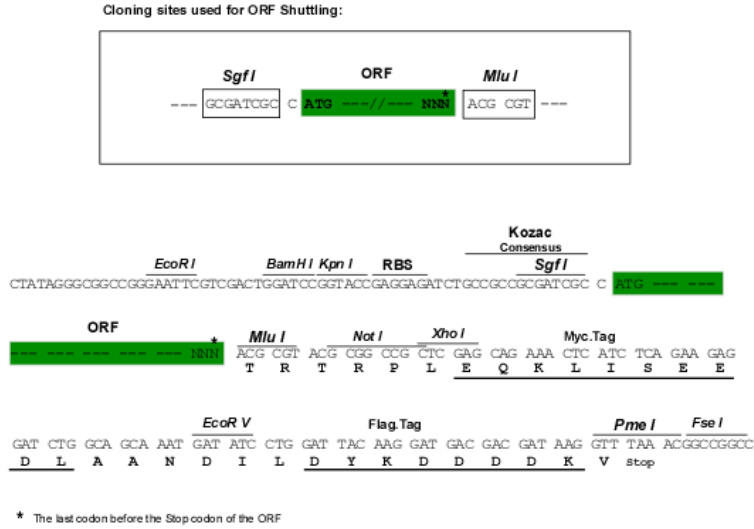
MKAGQQGRSCGLISPYLAPKNQSERFAFIAEWYDPNASLLRRYELLYPVDGSMHDKNRRTFLKRTK
 YEDLRVEDLFIGNKVNVFSRQLVLIDYGDQYARQLGSRKEKTLALIKPDAVSKAGEIIEINKSGFTIT
 KLRMMTL SRKEAADFHVDHHSRPFYNELIQFITSGPVIAMEILRDAICEWKRL LGPANSIARSEAPGS
 VRALFGTDGIRNAAHGSDTFESAAREMELFFPSSGGCGPTNTAKFTNCTCCI IKPHAI SEGMLGKILIAI
 RDACFEISAIQMFNMDRANVEEFYEVYKGVLSYNDMVTLEYSGPCVAIEIQQSNPTKTFREFCGPSDPE
 IARHLRPETLRANFGKTKVQNAVHCTDLPEDGLLEVQYFFKILDN

TRTRPLEQKLISEEDLAANDILDYKDDDDKV

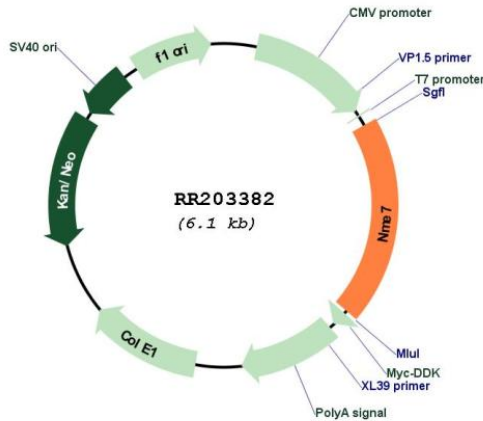
Restriction Sites:

Sgfl-MluI

Cloning Scheme:



Plasmid Map:



ACCN: NM_138532

ORF Size:	1185 bp
OTI Disclaimer:	The molecular sequence of this clone aligns with the gene accession number as a point of reference only. However, individual transcript sequences of the same gene can differ through naturally occurring variations (e.g. polymorphisms), each with its own valid existence. This clone is substantially in agreement with the reference, but a complete review of all prevailing variants is recommended prior to use. More info
OTI Annotation:	This clone was engineered to express the complete ORF with an expression tag. Expression varies depending on the nature of the gene.
Components:	The ORF clone is ion-exchange column purified and shipped in a 2D barcoded Matrix tube containing 10ug of transfection-ready, dried plasmid DNA (reconstitute with 100 ul of water).
Reconstitution Method:	<ol style="list-style-type: none">1. Centrifuge at 5,000xg for 5min.2. Carefully open the tube and add 100ul of sterile water to dissolve the DNA.3. Close the tube and incubate for 10 minutes at room temperature.4. Briefly vortex the tube and then do a quick spin (less than 5000xg) to concentrate the liquid at the bottom.5. Store the suspended plasmid at -20°C. The DNA is stable for at least one year from date of shipping when stored at -20°C.
RefSeq:	NM_138532.1 , NP_612541.1
RefSeq Size:	1659 bp
RefSeq ORF:	1188 bp
Locus ID:	171566
UniProt ID:	Q9QXL7
Cytogenetics:	13q23
MW:	44.5 kDa
Gene Summary:	nucleoside-diphosphate kinase important for purine and pyrimidine biosynthesis [RGD, Feb 2006]