

Product datasheet for **RR203373**

Nipal1 (NM_001106003) Rat Tagged ORF Clone

Product data:

Product Type: Expression Plasmids
Product Name: Nipal1 (NM_001106003) Rat Tagged ORF Clone
Tag: Myc-DDK
Symbol: Nipal1
Synonyms: Npal1; RGD1310092
Vector: pCMV6-Entry (PS100001)
E. coli Selection: Kanamycin (25 ug/mL)
Cell Selection: Neomycin
ORF Nucleotide Sequence: >RR203373 representing NM_001106003
 Red=Cloning site Blue=ORF Green=Tags(s)

TTTTGTAATACGACTCACTATAGGGCGCCGGAATTCGTCGACTGGATCCGGTACCGAGGAGATCTGCC
 GCC**CGGATCGCC**

ATGGGGGCACAGCTGAGGCTGCCACCCGGAGAGCCCTGCCGGAAGGGTATGTGCTGTCTCTGGTCTGCT
 CAAACTCTCCAGGCTCTGTGTGAGATCACAACGTGTCACAGCCGCTGGCTTATCCTGTCTCTACAC
 GAACCCGAATTCCTCCACAAGCAACTTCAGCATCTCAGCAGGTGTAGAAAACAAATATAGTCTGTATGTG
 GGCTTGGTATTGGCCATAAGCTCCAGCTTTTTTATTGGCTCAAGTTTCATACTCAAAAAGAAGGGTCTCT
 TGCAACTGGCCGACAAGGGCATTACCAGAGCAGTGGGAGCTGGAGAGGCTGCAAACCTTCGCCGCTTATGC
 CTTTGCACCTGCCACCTTGGTCACCCCTCTGGGGCTCTGAGCGTTCTCATAAGTGCAATATTATCTTCC
 TATTTTTAAATGAGCACTTGAACATTCATGGGAAAATAGGCTGCATACTAAGCATATTGGGGTCAACTG
 TGATGGTTATCCACGCCCGCAAGAGGGAGAAGTACGTCTTTGCATGAAATGAAATGAAACTGAGAGA
 TCCAGGGTTCATTTCTTTGCTGTGATCGTCTCTGTGATCTCACTGGTGTGATTTTGGTGTGGCCCCG
 AGGAAAGGCCAGACTAATATATTGGTCTATATCTCAATCTGTTCTTTGATTGGAGCGTTTTCCGTTTTCTT
 CCGTGAAAGGCTTGGGGATTGCCATTAAGGAAGTCTGGAACGGAAGCCTGTTTACAAGGATCCCTGGT
 CTTTCATCCTGTTGGCCGTGCTTACACTTTCAGTGACGACCCAGATTAAGTATCTCAACAAGGCCCTGGAC
 ACTTTCAACACGTCTCTGGTGACTCCCATTACTATGTGTTCTTACATCCATGGTGGTGACATGTTCCG
 CCATCTTGTTCCAGGAGTGGTATGGCATGAGAGCTGGGATATCATCGGCACCCTGAGCGGGTTCTTAC
 CATCATCAATGGCATCTTCTTCTACATGCTTTTTAAAAACACCAACATCACCTGGAGCGAGCTCACGTCT
 ACGGCTAAGAAAGAAGTCTTTCTTCAAATGGCAGTCAGAACAGTTATGTTTTACTAGAGAATGCAGACT
 GCTCAACCTCTGGGTGTGATGACGACATCACCTGTTTAGCAGGACTGGTGACCAAAGTATCCATAAACT
 T

ACGCGTACGCGGCCGCTCGAGCAGAAACTCATCTCAGAAGAGGATCTGGCAGCAAATGATATCCTGGATT
 ACAAGGATGACGACGATAAGGTTTAA



[View online »](#)

Protein Sequence: >RR203373 representing NM_001106003
 Red=Cloning site Green=Tags(s)

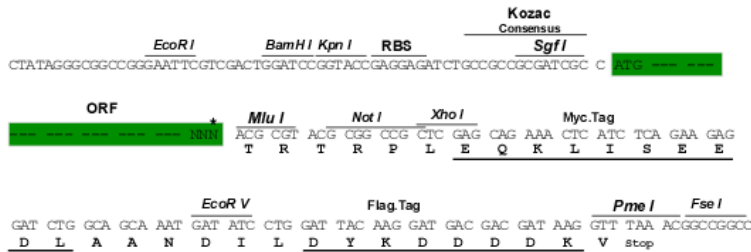
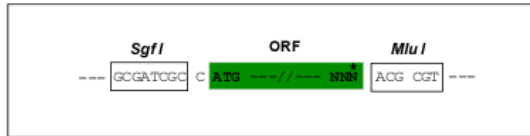
MGAQLRLPPGEPREGYVLSLVCSSQALCEITNVSQPLAYPVLYTNPNSSTSNFISISAGVENKYSLYV
 GLVLAISSFFIGSSFILKKKGLLQLADKGITRAVGAGEAANFAAYAFAPATLVTPLGALSVLISAILSS
 YFLNEHLNIHGKIGCILSILGSTVMVIHAPQEGEVTSHEMEMKLRDPGFISFAVIVSVISLVLILVVAP
 RKGQTNILVYISICSLIGAFSVSSVKGLGIAIKELLERKPVYKDPLVFIILLAVLTL SVTTQINYLNKALD
 TFNTSLVTPIIYYVFFTSMVVTC SAILFQEWYGM RAGDIIGT LSGFFTIIINGIFLLHAFKNTNITWSELTS
 TAKKEVLSSNGSQNSYVLL ENADCSTSGCDDITLFSRTGDQSIHKL

TRTRPLEQKLISEEDLAANDILDYKDDDDKV

Restriction Sites: SgfI-MluI

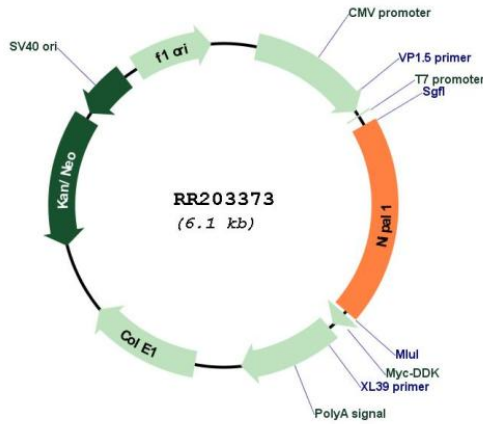
Cloning Scheme:

Cloning sites used for ORF Shuttling:



* The last codon before the Stop codon of the ORF

Plasmid Map:



ACCN: NM_001106003

ORF Size:	1191 bp
OTI Disclaimer:	The molecular sequence of this clone aligns with the gene accession number as a point of reference only. However, individual transcript sequences of the same gene can differ through naturally occurring variations (e.g. polymorphisms), each with its own valid existence. This clone is substantially in agreement with the reference, but a complete review of all prevailing variants is recommended prior to use. More info
OTI Annotation:	This clone was engineered to express the complete ORF with an expression tag. Expression varies depending on the nature of the gene.
Components:	The ORF clone is ion-exchange column purified and shipped in a 2D barcoded Matrix tube containing 10ug of transfection-ready, dried plasmid DNA (reconstitute with 100 ul of water).
Reconstitution Method:	<ol style="list-style-type: none">1. Centrifuge at 5,000xg for 5min.2. Carefully open the tube and add 100ul of sterile water to dissolve the DNA.3. Close the tube and incubate for 10 minutes at room temperature.4. Briefly vortex the tube and then do a quick spin (less than 5000xg) to concentrate the liquid at the bottom.5. Store the suspended plasmid at -20°C. The DNA is stable for at least one year from date of shipping when stored at -20°C.
RefSeq:	NM_001106003.1 , NP_001099473.1
RefSeq Size:	1379 bp
RefSeq ORF:	1194 bp
Locus ID:	289594
Cytogenetics:	14p11
MW:	42.7 kDa