

Product datasheet for **RR203360**

Itga4 (NM_001107737) Rat Tagged ORF Clone

Product data:

Product Type: Expression Plasmids
Product Name: Itga4 (NM_001107737) Rat Tagged ORF Clone
Tag: Myc-DDK
Symbol: Itga4
Vector: pCMV6-Entry (PS100001)
E. coli Selection: Kanamycin (25 ug/mL)
Cell Selection: Neomycin
ORF Nucleotide Sequence: >RR203360 representing NM_001107737
Red=Cloning site Blue=ORF Green=Tags(s)

TTTTGTAATACGACTCACTATAGGGCGGCCGGGAATTCGTCGACTGGATCCGGTACCGAGGAGATCTGCC
 GCCCGATCGCC

ATGGCTGCGGAAGCGATGTGCAGACCGAGGCCCGAGGGGTGCGCCCTCCAGGAAGCGGTGATGCTGTTGC
 TGTACTTCGGGGTACACTTCAGGGTACCAACCGGGCACTCTACAACCTGGACCCGGAGAGTGCCTGCT
 GTACCAGGGCCCTCCGGCACGCTGTTTGGCTACTCGGTGGTGCACAGCCACGGGACGAAGCGCTGG
 CTATTGTGGGGCGCCCACTGCCAGTGGCTCGCCAATGCCTCGGTGGTCAATCCTGGGGCGATTACA
 GATGCAGGATCGAAAGAATCCAAACCAGATCTGCGAACAGCTCCAGCTGGGAAGCCCACTGGAGAACC
 CTGTGGGAAGACGTGCTTGAAGAGAGAGATAATCAGTGGCTGGGAGTGACAATTTCCAGACAGCCAGGA
 GAAAATGGATCTATCGTGACTTGTGGGCACAGGTGAAAAATATATTTTACATGAAGAACAATAAAAC
 TCCCCACTGGTGTGCTATGGCATGCCTTCTGATTTGCGGACAGAACTAAGTAAAAGGATGGCCCCCTG
 TTACCAAGATTTGTGAGAAAATTTGGAGAAAATTTGCATCGTGTCAAGCTGGAATATCTAGTTTTTAC
 ACACAGGATTTGATTGTGATGGGGCCCGGGATCATCGTACTGGACCGCTCCGTCTTTGTCTACAACA
 TAACTACGAACAATAACAAGGCATTTGTAGACAGACAGAATCAAGTAAAATTTGGAAGCTACTTAGGCTA
 CTCAGTAGGAGCTGGTCAATTCGAAATCCACATACTACCGAAGTCGTGGGAGGAGCCCTCAACACGAA
 CAGATAGGAAAAGCATATATATTCAGCATTGATGAAAGCGAACTGACCATCGTATATGAAATGAAAGGTA
 AAAAGCTTGGCTTTACTTTGGAGCTTCTGTCTGTGCGGTGGACCTCAATGCAGATGGCTTCTCAGATCT
 CCTTGTGGAGCGCTATGCAGAGCACCATCAGGGAGGAAGGAAGAGTGTTCGTGTACATCAACTCTGGC
 ATGGGAGCTGTGATGGTTGAAATGGAAGAGTGCCTCGTGGAAAGTGACAAATATGCTGCCAGGTTTGGG
 AATCCATGGCAAATCTTGGCGACATTGACAATGATGGCTTTGAAGATATTGCTATTGGCGCACCAAGA
 AGATGACTTGGAGGCGCTGTCTACATTTACAATGGCCGAGTAGATGGCATCTCCTCTACATACTCACAG
 AGAATCGAAGGACGTCAAATCAGCCAGTCACTAAGGATTTTGGACAGTCTATCTCAGGACAAATGATG
 CAGACAACAATGGATATGTTGATGTAGCGGTTGGTGCATTTTCAGTCTGATTCTGCAGTGTGCTAAGGAC
 ACGGCCTGTAGTGATTGTTGAAGCATCTTAAAGCCATCCTGAGTCAGTAAATAGAACAAAATTTGACTGT
 ACTGAAAATGGACTTCTGTCTGTGTGCGTGGATCTTAACTGTGTTTCTCATATAAGGGCAAAGAGGTCC
 CAGGCTACATCGTTTTGTTTACAATGTGAGCTTGGATGTGCACAGGAAGGCCGAGTCTCCGTCAAGATT
 TTATTTCTTCCAATGGGACTTCTGACATGATTACAAGAAGCATACGAGTTTCAAGCAGTGGAGAGAAA



[View online »](#)

TGTAGGACACACCAGGCATTCATGCGGAAAGACGTGCGAGACATCCTCACTCCCATTGAGTTGAGGCCA
 CATAACCACCTTGGGCATCATGTGATCACCAAACGAAACACAGAGGAATCCCACCCTCCAGCCGATCCT
 TCAGCAGAAGAAAGAAAAAGACATTATTAGAAAAACGATAAACTTCGCAAGGTTTTGTGCCTATGAAAT
 TGTTCTGCTGATCTGCAGGTTTCTGCAAAAGTTGGGTTTTGAAGCCATATGAAATAAACCTATCTTG
 CTGTTGGGAGCATGAAGACCATAATGCTAAATGTGTCCTTGTCAATGCTGGAGATGATGCTTATGAAAC
 TACTCTGAATGTCCAACCTCCCCACAGGCCTTTATTTTATTAAAGATCTTAGACCTGGAAGAGAAACAATA
 AACTGCGACGTGACAGAGAGCTCAGGCGTAGTTAAGCTTGCCTGCAGCCTCGGTTACATATACGTGGATC
 GTCTCTCAAGGATAGACATTAGCTTTCTCTGGATGTGAGCTCACTCAGCAGGGCCATGAGGACCTCAG
 CATCAACGTGCATGCCTCCTGTGAAATGAGGGTAAATTGGACCAAGTAAAGACAAACAGAGTGACCTTA
 GTGATACCTCTAAGGTATGAAGTTATGCTGGCTTTCACGGGTTTGTGACCCCAACTTCGTTTGTGTATG
 GATCCAGTGAAGAAAACGAGCCAGAAAATGTGCATGGCAGAGAAAATGAACCTCACTTTCCATGTTATAAA
 CACTGGCATTAGCATGGCTCCAATGTTAGTGTGAAAATAATGGTACCAATTTCTTTTCTCCCTCGAAAT
 GATAAGTTGTTCAACGTTTTGGATGTCCAGGCACTATGGGGCAGTGCCAATTTGAACACTATGGACGAG
 AGTGTGCATTAGCACAGCAAAAAGGCATAGCGGGGACCTTGACCGATTTGGTCAAATTTCTATCAAAGAC
 TGATAAGAGACTCCTGTATTGCATGAAAGCTGATCGACACTGTTTAGATTCTTATGTAATTTCCGGAAA
 ATGGAAAAGTGGGAAGGAAGCCAGCGTTCACATTAGCTGGAAGGAGGCCATCCGCTTGGAATGGATG
 AGACCTCATCGCTCAAATTTGAAATAAAAGCAACAGCTTTTCCAGAGCCACCCAAAAGTTATTGAGCT
 CAATAAGGATGAGAACATTGCCCATGTTTACTTGGAAAGGCTCCATCATCAAAGACCCAAACGGCATTTC
 ACCATCGTGATTGTCACCATCAGCTTGCTCCTTGGACTTATTGTACTTTTATTAATTTTATGTGTTATGT
 GGAAGGCTGGATTTTTTAAAAGGCAGTACAAATCTATCTACAAGAAGAAAACAGGAGAGACAGCTGGAG
 TTATGTCAACAGCAAAAGCAATGATGAC

ACGCGTACGCGGCCGCTCGAGCAGAAACTCATCTCAGAAGAGGATCTGGCAGCAAATGATATCCTGGATT
 ACAAGGATGACGACGATAAGGTTTAA

Protein Sequence:

>RR203360 representing NM_001107737
 Red=Cloning site Green=Tags(s)

MAAEAMCRPRRPRGVALQEAVMLLLYFGVHFRVPTGHSYNLDPESALLYQGPSGLTFGYSVVLHSHGTRKRW
 LIVGAPTASWLANASVVNPGAIYRCRIGKNPNQICEQLQLGSPSGEPCGKTCLEERDNQWLGVITISRQPG
 ENGSIVTCGHRWKNIFYMKNNNKLP TGVCYGMPSDLRTEL SKRMAPCYQDFVRKFGENFASCQAGISSFY
 TQDLIVMGAPGSSYWTGVSFVYNIITNKYKAFVDRQNQVKFGSYLGYSVGAGHFRNPHTTEVVGGAPQHE
 QIGKAYIFSIDESELTIVYEMKGGKLGSYFGASVCAVDLNADGFSDLLVGAPMQSTIREEGRVFVYINSG
 MGAVMVMERVLVGS DKYAARF GESMANLGDIDNDGFEDIAIGAPQEDDLRGAVYIYNGRVDGISSTYSQ
 RIEGRQISQSLRMFGQSI SGQIDADNNGYVDVAVGAFQSDS AVLLRTRPVVIVEASL SHPESVNRTKFDK
 TENGLLSVCVDLKL CFSYK GKEVPGYIVL FYNVSLDVHRKAESPSRFYFFSNGTSDMITRSIRVSSS GEK
 CRTHQAFMRKDVRDIL TPIQVEATYHLGHHVITKRNT EEFPLQPILQQKKEKDIIRKTFIN FARFCAYEN
 CSADLQVSAKVGLKPYENKTYLAVGSMKIMLVSLFNAGDDAYETTLNVQLPTGLYFIKILDLEEKQI
 NCDVTESSGVVKLACSLGYIYVDRLSRIDISFLLDVSSL SRAHEDLSINVHASCENEGKLDQVKDNRVTL
 VIPLRYEYMLAVHGFVTPTSFVYGSSENEPEMCAEKLNLTFHVINTGISMAPNVSVKIMV PNSFLPRN
 DKLFNVLDVQATMGQCQFEHYGRECALAQKGIAGTLDLVKFLSKTDKRLLYCMKADRHCLDFL CNFGK
 MESGKEASVHIQLEGRPSVLEMDETS SLKFEIKATAFPEPHPKVIELNKDENIAHVYLEGLHHQRPKRHF
 TIVIVTISLLGLIVLLLISCVMMKAGFFKRQYKSILQEENRRDSWSYVNSKSNDD

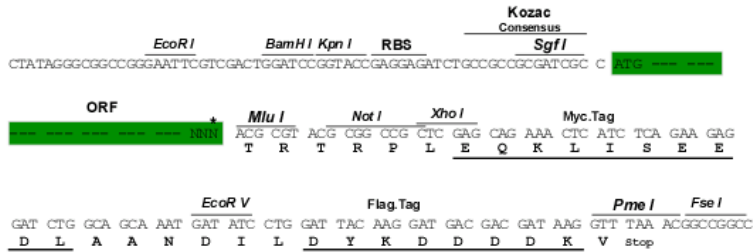
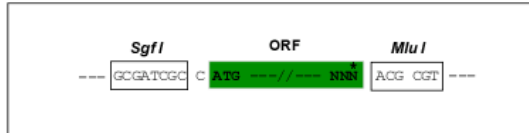
TRTRPLEQKLI SEEDLAANDILDYKDDDDKV

Restriction Sites:

SgfI-MluI

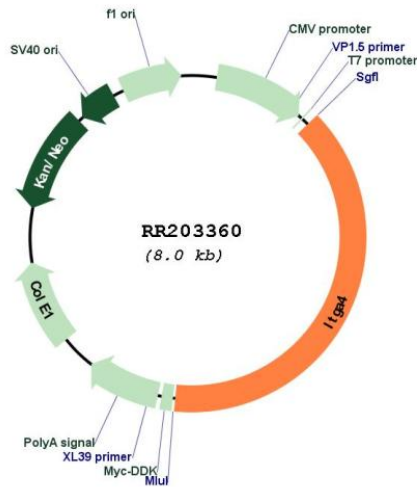
Cloning Scheme:

Cloning sites used for ORF Shuttling:



* The last codon before the Stop codon of the ORF

Plasmid Map:



ACCN: NM_001107737

ORF Size: 3108 bp

OTI Disclaimer:	The molecular sequence of this clone aligns with the gene accession number as a point of reference only. However, individual transcript sequences of the same gene can differ through naturally occurring variations (e.g. polymorphisms), each with its own valid existence. This clone is substantially in agreement with the reference, but a complete review of all prevailing variants is recommended prior to use. More info
OTI Annotation:	This clone was engineered to express the complete ORF with an expression tag. Expression varies depending on the nature of the gene.
Components:	The ORF clone is ion-exchange column purified and shipped in a 2D barcoded Matrix tube containing 10ug of transfection-ready, dried plasmid DNA (reconstitute with 100 ul of water).
Reconstitution Method:	<ol style="list-style-type: none">1. Centrifuge at 5,000xg for 5min.2. Carefully open the tube and add 100ul of sterile water to dissolve the DNA.3. Close the tube and incubate for 10 minutes at room temperature.4. Briefly vortex the tube and then do a quick spin (less than 5000xg) to concentrate the liquid at the bottom.5. Store the suspended plasmid at -20°C. The DNA is stable for at least one year from date of shipping when stored at -20°C.
RefSeq:	NM_001107737.1 , NP_001101207.1
RefSeq Size:	3736 bp
RefSeq ORF:	3111 bp
Locus ID:	311144
Cytogenetics:	3q24
MW:	115.6 kDa
Gene Summary:	mouse homolog is involved in adult hematopoietic cell homeostasis, regeneration, and homing [RGD, Feb 2006]