

## Product datasheet for **RR203298**

### **Ythdc1 (NM\_133423) Rat Tagged ORF Clone**

#### **Product data:**

Product Type:	Expression Plasmids
Product Name:	Ythdc1 (NM_133423) Rat Tagged ORF Clone
Tag:	Myc-DDK
Symbol:	Ythdc1
Synonyms:	Yt521
Mammalian Cell Selection:	Neomycin
Vector:	pCMV6-Entry (PS100001)
E. coli Selection:	Kanamycin (25 ug/mL)



[View online »](#)

**ORF Nucleotide Sequence:**

>RR203298 representing NM\_133423  
 Red=Cloning site Blue=ORF Green=Tags(s)

TTTTGTAATACGACTCACTATAGGGCGGCCGGGAATTCGTCGACTGGATCCGGTACCGAGGAGATCTGCC  
 GCC**CGGATCGCC**

ATGGCGGCCGACAGCCGGGAGGAGAAAGATGGGAACTTAATGTTTTAGATGATATTTGACTGAAGTAC  
 CAGAACAGGATGATGAACTGTATAATCCAGAGAGTGAACAAGATAAAAAAGGATCAAAAAG  
 AAAAAGTGAAGAATGGAATCTATTGACACCAAGCGACAGAAGCCTTCTATCCATTCAAGACAAGTATT  
 TCTAAGCCACTAAGCTCATCTGTTAGCAATAATAAAAGAATAGTTAGTACAAAAGGAAAGTCGGTTACAG  
 AATATAAAAATGAGGAATATCAAAGATCTGAAAGGAACAAGCGTCTAGATGCTGATCGAAAAATTCGCT  
 GTCAAGCAGTTCCTCTAGAGAACCTTACAAGAGTCAACCAGAAAAACCTTGTCTACGGAAAAAGGATTCT  
 GAAAGAAGGGCCAAGTCTCTACACCAGATGGTCTGAGAGAATTGGGCTTGAAGTTGATAGACGTGCAA  
 GCAGATCCAGCCAGTCTCAAAGGAAGAGGGGAACTCTGAGGAGTATGGCTCTGACCACGAGACAGGAAG  
 CAGTGCTTCTTGAACAGGGCAACAACACTGAGAATGAGGAGGAAGGAGGGGAAGAAGATGTAGAGGAA  
 GATGAAGAGGTAGATGAAGATGGAGATGATGATGAGGAAGTGGATGAAGATGCGGAGGAGGAGGAGGACG  
 AGGAAGAAGATGAGGAGGAGGAGGATGAGGAAGAAGAAGGAAGGAAGAAGAATATGAACAGGATGA  
 GAGAGATCAGAAGGAAGAAGGGAATGATTATGACACCCGTAGTGAGGCCAGTGATTCTGGTTCTGAGTCT  
 GTTTCCTTACAGATGGATCTGTGAGGTCTGGTTCAGGAACAGATGGATCAGATGAGAAAAAGAAGGAAA  
 GGAAGAGAGCTCGAGGCATATCACCCATTGTCTTTGATAGAAGTGGCAGTTCTGCATCAGAGTCATATGC  
 AGGTTCCAGAAAAGAAGCATGAGAAATTATCATCTCCGTTCTGCTGTCCGAAAAGATCAAACAGTAAA  
 CTCAAATCTGTCTTTCAGGATGCAAGATTTTCCCTATAAAGAGTAACAACCATGAGAATGTGTCTTTG  
 CCAAAGCAAAGGGTGTATGGTCCACATTACCTGTAATGAGAAGAAATTAATCTTGCCTTATAGATCTGC  
 AAGGAGTGTATATTAATATTTTCTGTGAGGAAAGTGGAAAGTTTCAAGGTTTTGCCAGATTGTATCA  
 GAATCGCATCATGGTGGCTCTCCTATACATTGGGTGCTTCCAGCAGGAATGAGTGCTAAAATGCTTGGAG  
 GTGTTTTTAAATTTGACTGGATTTGAGGCGTGAATTACCTTTACTAAGTCAGCTCATCTCACCAATCC  
 CTGGAATGAACATAAGCCAGTAAAGATTGGACGTGATGGACAGGAAATGAACTTGAATGTGAACCCAG  
 CTTTGTCTTCTGTTTCCCCTGATGAAAGTATTGACTTGTATCAGCTCATTATAAAATGCGTCACAAGA  
 GAAGAATGCATTCTCAGCCTCGATCAAGAGGACGTCCATCCGTCGAGAACCAGTCCGGGATGTGGGAAG  
 GCGTCGACCAGAAGATTATGATATTCATAACAGCAGAAAAGAAACCAAGGATTGACTATCCCCTGAGTTT  
 CACCAGAGACCAGGGATTTAAAGGATCCCGATACCAGGAAGTTGACAGTTTCACAAATCTTATCCCA  
 ACAGACGATTTTCAGGAGTTCGCCGAGATGTGTTTTTAAATGGGTCTACAATGATTATGTGAGGGAATT  
 TCATAACATGGGACCACCGCTCCTTGGCAAGGAATGCCTCCTTACCCGGGAATAGAACAGCCTCCACAC  
 CATCCCTACTACCAGCACCATGCCCCGCTCCTCAAGCCACCCCTTACTCAGGACACCATCCGGTAC  
 CACATGAAGCAAGATACAGAGATAAACGAGTACATGACTATGATATGAGGGTTGATGATTTCTTCGCCG  
 CACACAAGCCGTTGTGAGTGGTGGGAGAGTAGACCCCGAGAAGAGATCGGGAGCGAGAGCGAGACCCG  
 CCTAGAGATAACAGAAGAGATAGAGAGCGAGACAGAGGTCGTGATCGAGAAAGAGAGAGAGAAAGAATAT  
 GTGATCGGGACAGAGACCGAGGGGAAAGAGGTCGTTATCGAAGA

**ACGCGT**ACGCGGCCGCTCGAGCAGAACTCATCTCAGAAGAGGATCTGGCAGCAAATGATATCCTGGATT  
 ACAAGGATGACGACGATAAGGTTTAA

**Protein Sequence:** >RR203298 representing NM\_133423  
Red=Cloning site Green=Tags(s)

```

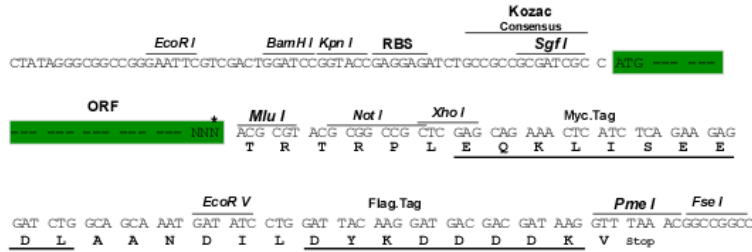
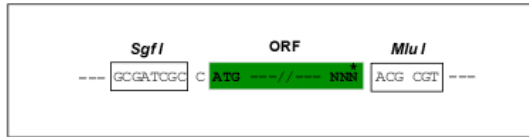
MAADSREEKDGELNVLDDILTEVPEQDDELYNPESEQDKNEKKGSKRKSERMESIDTKRQKPSIHSRQLI
SKPLSSSVSNKRIVSTKKGKSVTEYKNEEYQRSENRKLDADRKIRLSSSSSREPKYSQPEKPLRKRDS
ERRAKSPTPDGSEIRIGLEVDRRASRSSQSKEEGNSEEYGDHETGSSASSEQGNNTENEEEGEEDVEE
DEEVDDEGDDEEVEDAEEDDEEDDEEDDEEDDEEDDEEDDEEDDEEDDEEDDEEDDEEDDEEDDEED
DEEVDDEGDDEEVEDAEEDDEEDDEEDDEEDDEEDDEEDDEEDDEEDDEEDDEEDDEEDDEEDDEED
VDFDGSVRSVSGSDGSDGDEKDKKRRARGISPIVDFDRSGSSASESYAGSEKKHEKLSVAVRQDQTSK
LKSVLQDARFFLIKSNHENVSLAKAKGVWSTLPVNEKLNLAFRSARSVILIFSVRESGKFGFARLSS
ESHGGSPHWWLPAGMSAKMLGGVFKIDWICRRELPTKSAHLNPNWNEHKPVKIGRDGQIEIELECGTQ
LCLLFPPEIDLYQLIHKMRHKRRMHSQPRSRGRPSRREPVRDVGRRRPEDYDIHNSRKKPRIDYPPF
HQRPGYLKDPYQEVDSFTNLIPNRRFSGVRRDVFNGSYNDYVREFHNMGPPPPWQGMPPYPGIEQPPH
HPYYQHAPPQAHPPYSGHHPVPEARYRDKRVHDYDMRVDDFLRRTQAVVSGRRSRPRERDRERERDR
PRDNRRDRERDRGRDRERERERICDRDRDRGERGRYRR
    
```

TRTRPLEQKLISEEDLAANDILDYKDDDDKV

**Restriction Sites:** SgfI-MluI

**Cloning Scheme:**

Cloning sites used for ORF Shuttling:



\* The last codon before the Stop codon of the ORF

**ACCN:** NM\_133423

**ORF Size:** 2214 bp

**OTI Disclaimer:** The molecular sequence of this clone aligns with the gene accession number as a point of reference only. However, individual transcript sequences of the same gene can differ through naturally occurring variations (e.g. polymorphisms), each with its own valid existence. This clone is substantially in agreement with the reference, but a complete review of all prevailing variants is recommended prior to use. [More info](#)

**OTI Annotation:** This clone was engineered to express the complete ORF with an expression tag. Expression varies depending on the nature of the gene.

**Components:** The ORF clone is ion-exchange column purified and shipped in a 2D barcoded Matrix tube containing 10ug of transfection-ready, dried plasmid DNA (reconstitute with 100 ul of water).

**Reconstitution Method:**

1. Centrifuge at 5,000xg for 5min.
2. Carefully open the tube and add 100ul of sterile water to dissolve the DNA.
3. Close the tube and incubate for 10 minutes at room temperature.
4. Briefly vortex the tube and then do a quick spin (less than 5000xg) to concentrate the liquid at the bottom.
5. Store the suspended plasmid at -20°C. The DNA is stable for at least one year from date of shipping when stored at -20°C.

**RefSeq:** [NM\\_133423.1](#), [NP\\_596914.1](#)

**RefSeq Size:** 2968 bp

**RefSeq ORF:** 2217 bp

**Locus ID:** 170956

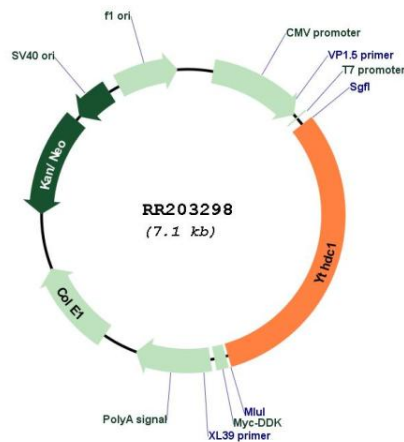
**UniProt ID:** [Q9QY02](#)

**Cytogenetics:** 14p21

**MW:** 85.8 kDa

**Gene Summary:** binds nuclear transcriptosomal complex scaffold attachment factor B (SAF-B) and Sam68; may play a role in splice site selection and alternative splicing [RGD, Feb 2006]

### Product images:



Circular map for RR203298