

## Product datasheet for **RR203292**

### Itgae (NM\_031768) Rat Tagged ORF Clone

#### Product data:

**Product Type:** Expression Plasmids  
**Product Name:** Itgae (NM\_031768) Rat Tagged ORF Clone  
**Tag:** Myc-DDK  
**Symbol:** Itgae  
**Vector:** pCMV6-Entry (PS100001)  
**E. coli Selection:** Kanamycin (25 ug/mL)  
**Cell Selection:** Neomycin  
**ORF Nucleotide Sequence:** >RR203292 representing NM\_031768  
Red=Cloning site Blue=ORF Green=Tags(s)

TTTTGTAATACGACTCACTATAGGGCGGCCGGAATTCGTCGACTGGATCCGGTACCGAGGAGATCTGCC  
 GCCCGATCGCC

ATGAAGTGGTTCTTCCATGCCCTTCTCTCGTGGCCAGCCTGAAGCCCTGGGAGCCTCAATGTGGATG  
 TGGACTGGTCTGGTCCACAGCACTCCAGCCAGGTGCGCCTCCGTGCTCAACTCCCTTCTGCATCAAGA  
 CCCCAGCAACAACAGACCTGCCTCCTGGTAGCCAGCAGCTCCAACAGGAATTCAGCAGTCCGTAT  
 CGATGTGCTACATCCATCATTCCAGATGAAATTGGTTGCCAGCCAGTAGAGCACATCCTTATGCCAAAGG  
 GCAGGTACCAGGGAGTGACATTGGTCAGGAACCAATGGTGTGGTATGCATTACAGGTACAGTCCCG  
 GAAGCCCCGAGCCTTAACCTCGGAGCTACCGGTGCCTGCAGCCTACTTACCCCCAACTGGACCTCCAG  
 GCGCAAGCCTACTTCTGACCTGAAGGAGTCTGGATCTGGTGCATCTGTGAACCTGGTACTACT  
 ACGGAAGCAAAGGAGGCAGCACAGGGGAGGAGACGAAATCAGCCAGGAGACTCCGACGACAGGCAGTGA  
 GGAGGAAGACGAGGAGGAAGCTGGCACCAGAAATCGCTATTGTTCTGGATGGCTCAGGAAGCATTGAACCC  
 TCAGACTTCCAGAAGGCCAAAGATTTCTCTACGATGATGAGGAACCTCTATGAAAAGTGTGGTGGT  
 GCAACTTTGCCCTGGTGCAGTATGGGGCGTGATCCAGACTGAGTTTGATCTTCTAGACAGCCGGGACAT  
 CAACGCCCTCCCTTGCCAAAGTTCAGAGCATCGTTCAAGTGAAGGAAGTCACTAAGACCGCCTCAGCCATG  
 CAGCATGTCTAGATAATATCTTCAATCCAAGTCTGGCTCCAGAAAGAAAGCATTGAAGGTTATGGTGG  
 TGCTTACTGATGGTGACATATTTAGGGACCCTCTCAACCTTACGACTGTCATCAGTTCCTCAAAGATGCA  
 GGGTGTGGTGGCCTTTGCCATTGGGGTAGGCAATGCATTTCGAGAATAATAACACTTACAGAGAAGTGAAG  
 CTGATTGCCTCAGACCCTAAAGCGGCCCACTTTCAAGTGACCAACTACTCGGCTCTGGATGGGCTGC  
 TGAGCAAGCTACAGCAGAGGATCATCCACATGGAAGGCACAGTTGGAGACACCCTCAATATCAACTCGC  
 ACAGACTGGCTTCAGTGTCTCAGATCCTGGACAAGGGCAGGTGTGCTTGGCACTGTGGGGCCCTTAAC  
 TGGTCTGGGGCGCCTGCTCTACAACACAGAAATGGTCGGGGCCGCTTCTAAACAGACAGCCAAAGG  
 AGGACTTCAGGGCTGCACAGTACAGCTACCTCGTTATTCAAGTTGCAGCACTACACAAGGCCCATGGTGT  
 CTCTACGTGGCAGGGCTCCAAGGCACAGCTCCGTGGGGCTGTGTTGAGCTCCAGAAGGAGGACGGA  
 GAGGAAACCTTATGCGACGGATAGAAGGAGAGCAGATGGGGTCTATTTTGGCTCTGTGCTGTGCCCTG  
 TGGATATCAACATGGATGGAATCACAGATTTTCTGCTGGTGGCAGCTCCATTTTACCACATCCGTGGAGA  
 AGAAGGCAGAGTCTATGTGTACCGCTGCACGAGCAGGATGCTCCCTTCTCCTTGGTATACACACTGAGT



GGGTACCCTGGGCTCACCAGTAGCCGCTTCGGCTTTGCCATGGCAGCTGTGGGGATATCAATCAAGATA  
AATTACACAGATGTGGCCATTGGGGCCCCTCTGGAGGGCTTTGGGGCAGGCATGGGGCAAGCTATGGCAG  
CGTGTACATCTACAATGGACACTCAGGTGGCCTGCATGCCAGTCCCTCCCAGCAGATCAGAGCCTCCTCT  
GTGGCCTTGGGACTCTACTACTTTGGCATGTCTGTGTCTGGTGGTTTAGATTTTCAGTGGCGATGACCTTG  
CCGACATCACAGTTGGCTCTCAGGACGTGGCAGTTGTGCTCCGCTCACGACCTGTGGTGGACCTGACTGT  
GTCTATGACCTTTACCCCTGATGCGCTGCCATGGCCTTCAAGGACAAGATGGATGTAGAAGTTGTGCTTC  
AAAGTTGACTCTTCAGCTGTACCTTCTGAACCAGGCCTTAGAGGGATGTCACATAAACTTACCGTGGATG  
TGGATGTGACCAAGCAGAAGCAGAGGCTGCAGTGTGCAGACCGGAGTTGTTGTCAAAGCTGCCTTATGAA  
GTGGAGCGGAGGATCCTCTCTGTGTGAACACTTCGGGCTCATCTCCACAGAGGAGGAGCTTTGTGAGGAT  
GACTGCTTCTCCAACATCACCATCAAGGTCAGTTATGAGTTCCAGACATCCGAGGAAAGGAGGAACCACC  
CCAACCCCATCTGGACACTACAAGGAACCTCTGCCATCTTCCAGCTGCCCTATGAGAAGGACTGCAA  
GAACAAAGTGTTCGCATCGCTGAGATCCAGCTGACCACCGCCATCTCTCAGCAAGACCTGGTGGTGGGT  
ATCACAAAGGAGGTGACCATGAACATCAGCCTGACTAACTCTGGGAAGATTCTTACATGACAAACATGG  
CTCTGAATTATCCAGAAACTTACAGTTAAGAAGATACAAAAGCCACTCTCTCCAGATATTCAGTGTGA  
TGACCCCAAGCCAGTCGCTTCTGCTGGTTCATGAACTGCAAGATTGGTCACCCATACTCAAGAGATCA  
TCTGTAATGTCTCAGTACTTGGCAGCTAGAGGAGAGTATCTTCCAAATAGGACAGCAGATATCACTG  
TGACCATCTCAATTCCAATGAGAAGTCTTTGGCCAGAGAGACCCACAGCCTTCAATTCAGGCATGCCTT  
CATTGCAGTTCTTCCAGACCGTCAGTGTACATGAACACGAGCCAAAGCTCTTCTGACCACAAAGAA  
TTCTTCTTCAACGTGCACGGGGAGAATCACTTTGGAGCTGATTCAGTTGCAAAATTTGTGTCCCATCA  
CATTACGAGATTTACAGATTATAAGAGTGAAGCATCTGACAAAGACTCAGGCCACACTGAGTGCACCCA  
GAGTCAAGAGCCCAGTGTGGAAGCGATCCTGTTCAGAATGTGGAAGAAATGGCATTACAGTGTCTGCGCT  
ATCACATCTAATAAAGAAAATGTAACCGTGGCCGAGAGATCTCCATGGCCACACTAAGCAGTTACTAA  
GAGATATAAGTGAAGTGCAGATCCTTGGTAAATATCTTCAACAAATCTCTATGAGGCCCTGAATGC  
AGAGAACCACAGGACAAAGATCACAGTCATCTTCCCTGAAGGAGGAGAAGCCACACTCCCTCCTTAATC  
ATTGGCAGCAGTATCGGAGGCTCCTGGTCTGCTGATTATAGCCATTCTGTTCAAGTGTGGCTTTT  
TCAAAGAAAATATAACAGCTGAACCTGGAGAGCGTAAGGAAGGCACAGCTGAAGTCTGACAGTCTGCT  
CGAAGAT

ACGCGTACGCGGCCGCTCGAGCAGAAACTCATCTCAGAAGAGGATCTGGCAGCAATGATATCCTGGATT  
ACAAGGATGACGACGATAAGGTTTAA

**Protein Sequence:**

>RR203292 representing NM\_031768  
Red=Cloning site Green=Tags(s)

MKFFFHALLCVASLKPLGAFNVDVDWSVWTALQPGAPSVLNSLLHQDPSNNQTCLLVARRSSNRNSAVLY  
RCATSIIIPDEIGQPVEHILMPKGRYQGVTLVRNHNGVLVCIQVQSRKPRSLNSELTGACSLTLPNLDLQ  
AQAYFSDLEGLDLGASVNSGDYYGSKGGSTGEETKSARRLRQAVEEEDDEEAGTEIAIIVLDGSGSIEP  
SDFQKAKDFISTMMRNFYEKCFECNFALVQYGGVIQTEFDLLDSRDINASLAKVQSIQVKEVTKTASAM  
QHVLDNIFIPSRGSRKKALKVMVVLTDGDIRDPLNLTTVISSKMQGVVRFVFAIGVGNFENNTYRELK  
LIAADPKAAHTFKVTNYSALDGLLSKLQQRRIHMEGTVDLQYQLAQTGFSAQILDKGQVLLGTVGAFN  
WSGGALLYNTQNGRFRFLNQAKEDFRAAQYSYLGYSVAALHKAHGVSYVAGAPRHKLRGAVFELQKEDG  
EETFMRRIEIEGQMGSYFGSVLCPVDINMDGITDFLLVAAPFYHIRGEEGRVYVYRVEHQDAPFSLVYTLS  
GYPGLTSSRFGFAMAAGVDINQDKFTDVAIGAPLEGFGAGDGASYGSVYIYNGHSGGLHASPSQQIRASS  
VALGLYYFGMSVSGGLDFSGDDLADITVGSQDVAVVLRSPVVDLTVSMTFTPDALPMAFKDKMDVELCF  
KVDSSAVPSEPGLRGMSLNFVVDVTKQKQRLQCADRSCCQSCLMKWSGGSSLCEHFLISTEELCED  
DCFSNITIKVSYEFQTSERRNHPNPILDHYKEPSAIFQLPYEKDCKNKVFCIAEIQLTTAISQQDLVVG  
ITKEVTMNI SLTNSGEDSYMNMALNYPRLQFKKI QKPLSPDIQCDDPKPVASVLMNCKIGHPI LKRS  
SVNVSVTWQLEESIFPNRTADITVTISNSNEKSLARETHSLQFRHAFIAVLSRPSVMYMNSTQSSSDHKE  
FFFNHGENHFGAVFQLQICVPITLRDLQIIRVKHLTKTQAHECTQSQEPTCGSDPVQNVVEEWHSVICA  
ITSNKENVTVAAEISMGHTKQLLRDISELQILGEISFNKSLYEGLNAENHRTKITVIFLKEEKPHSLPLI  
IGSSIGLLLVVIAAILFKCGFFKRKYQLNLESVRKAQLKSDSLLLED

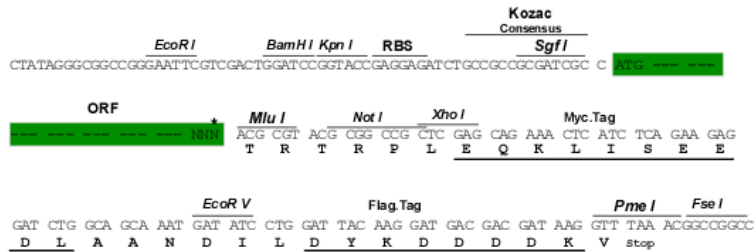
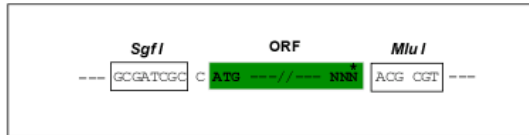
TRTRPLEQKLI SEEDLAANDILDYKDDDDKV

Restriction Sites:

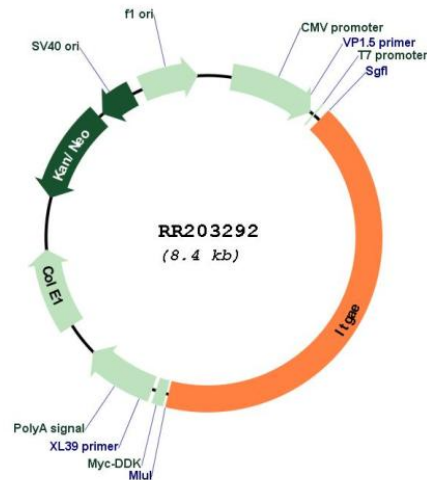
Sgfl-MluI

Cloning Scheme:

Cloning sites used for ORF Shuttling:



\* The last codon before the Stop codon of the ORF

**Plasmid Map:**


**ACCN:** NM\_031768

**ORF Size:** 3507 bp

**OTI Disclaimer:** The molecular sequence of this clone aligns with the gene accession number as a point of reference only. However, individual transcript sequences of the same gene can differ through naturally occurring variations (e.g. polymorphisms), each with its own valid existence. This clone is substantially in agreement with the reference, but a complete review of all prevailing variants is recommended prior to use. [More info](#)

**OTI Annotation:** This clone was engineered to express the complete ORF with an expression tag. Expression varies depending on the nature of the gene.

**Components:** The ORF clone is ion-exchange column purified and shipped in a 2D barcoded Matrix tube containing 10ug of transfection-ready, dried plasmid DNA (reconstitute with 100 ul of water).

**Reconstitution Method:**

1. Centrifuge at 5,000xg for 5min.
2. Carefully open the tube and add 100ul of sterile water to dissolve the DNA.
3. Close the tube and incubate for 10 minutes at room temperature.
4. Briefly vortex the tube and then do a quick spin (less than 5000xg) to concentrate the liquid at the bottom.
5. Store the suspended plasmid at -20°C. The DNA is stable for at least one year from date of shipping when stored at -20°C.

**RefSeq:** [NM\\_031768.2](#), [NP\\_113956.2](#)

**RefSeq Size:** 3754 bp

**RefSeq ORF:** 3510 bp

**Locus ID:** 83577

**Cytogenetics:** 10q24

**MW:** 129 kDa

**Gene Summary:** cell adhesion molecule that mediates cell-cell interaction; marker for veiled cells (dendritic cells in lymph) [RGD, Feb 2006]