

Product datasheet for **RR203288**

Actrt2 (NM_001013937) Rat Tagged ORF Clone

Product data:

Product Type: Expression Plasmids
Product Name: Actrt2 (NM_001013937) Rat Tagged ORF Clone
Tag: Myc-DDK
Symbol: Actrt2
Vector: pCMV6-Entry (PS100001)
E. coli Selection: Kanamycin (25 ug/mL)
Cell Selection: Neomycin
ORF Nucleotide Sequence: >RR203288 representing NM_001013937
Red=Cloning site Blue=ORF Green=Tags(s)

TTTTGTAATACGACTCACTATAGGGCGGCCGGAATTCGTCGACTGGATCCGGTACCGAGGAGATCTGCC
 GCCCGATCGCC

ATGTTAAACCCGCTGGTACTGGATTCTCCTCCGTGATTTTCGACAACGGGTCTGGACTCTGCAAGGCAG
 GGCTGTCTGGGAGATTGGCCCCGTACGTACCAGCTCTGTTGTGGGTACCCGAAGTTAAAGGCATC
 CCCACGGGAGCCTGTCAGAAGAAGTACTTTGTCGGAGAGGAAGCCCTGTCAAACAGGAGACTTTGCCG
 CTGCAGTCCCCATTGAGCGGGTCTGATCACGAGCTGGGATGACATAGAGAAGCTCTGGAGACACCTCT
 TTGAGTGGGAACCTGGGTGTGAAGCCCAGCGAACGACCTGTGCTCATGACGGAACCCCTCCCTGAACCCAG
 GGAGAATCGTGAGAAGACGGCAGAGGTGATGTTTGAGACCTTCGAGGTTCTGCCTTCTACCTATCAGAT
 CAGGCAGTGTGGCACTCTATTCTCTGCCTGTGTACGGCCTGGTGGTAGACAGTGGGGATGGGGTCA
 CCTGCACTGTCCCATCTTTGAAGGCTACTCCCTGCCTCATGCAGTCAGCAAGCTTTTCGTGGCTGGCAA
 AGACATCACAGAGCTCTCACCCGGCTGCTCCTGGCCAGTGGGAGAGCCTTCCATGCCCACTGGACAAG
 GCCCTGGTGGATGATATCAAGGAGAAGCTGTGCTATGTGGCCCTGGAGCCTGAAGAGGAAGCTCTCTCGG
 GGCAGAAAGAGCTTTGAGGGAGTACAACTGCCTGATGGGAATGTCATTTACATCGGAGACCAGCTGTA
 CCAGGCTCCTGAGGTCTGTTCTCACCAGACCAGCTGGGCACCCATGGCCAGGTCTGGCACAGATGGCG
 TCCAACAGCATAGCCAAGTGTGATGCTGACATACAGAAGACACTTTTGGGGAGATTGTCTGTCCGGGG
 GGAGCACTCTGTTTCAGGGGCTGGATGACAGGCTCCTAAAAGAACTGGAACAGCTGGCTTCCAAGGGGT
 CCCCATCAAAATCACGGCGCCGCTGACCGATGGTTCTCCACGTGGATCGGGGCCCTCATTGTACAGTCT
 CTGAGCAGCTTAAAGCAGATGTGGATCACTGCTGCAGACTTCAAAGATTTGGCGTGTCTGTGGTCCAGA
 GACGGTGTTC

ACGCGTACGCGGCCGCTCGAGCAGAACTCATCTCAGAAGAGGATCTGGCAGCAAATGATATCCTGGATT
 ACAAGGATGACGACGATAAGGTTTAA



[View online »](#)

Protein Sequence: >RR203288 representing NM_001013937
 Red=Cloning site Green=Tags(s)

MFNPLVLDSPSVIFDNGSGLCKAGLSGEIGPRHVTSSVVGYPKFKASPTGACQKKYFVGEEALFKQETLR
 LQSPIERGLITSWDDIEKLWRHLFEWELGVKPSERPVLMTPEPLNPRENREKTAEVFMFETFEVPAFYLS
 QAVLALYSSACVTGLVVDSDGDVCTVPIFEGYSLPHAVSKLFVAGKDITELLTRLLASGRAFPCLDK
 ALVDDIKEKLCYVALEPEEELSRRAEDVLRKYKLPDGNVIYIGDQLYQAPEVLFSPDQLGTHGPGAQMA
 SNSIAKCDADIQKTLFGEIVLSGGSTLFQGLDDRLLKELEQLASKGVPIKITAPPDRWFSTWIGASIVTS
 LSSFQMWITAADFKEFGVSVVQRRCF

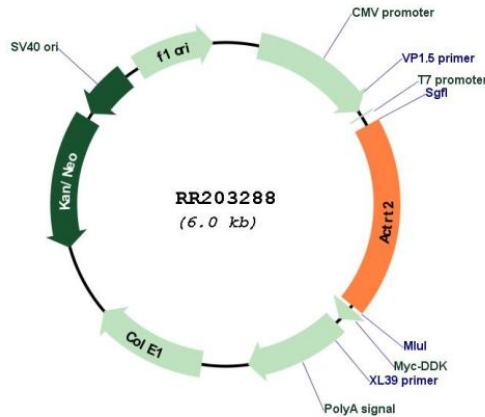
TRTRPLEQKLISEEDLAANDILDYKDDDDKV

Restriction Sites: SgfI-MluI

Cloning Scheme:



Plasmid Map:



ACCN: NM_001013937

ORF Size:	1131 bp
OTI Disclaimer:	The molecular sequence of this clone aligns with the gene accession number as a point of reference only. However, individual transcript sequences of the same gene can differ through naturally occurring variations (e.g. polymorphisms), each with its own valid existence. This clone is substantially in agreement with the reference, but a complete review of all prevailing variants is recommended prior to use. More info
OTI Annotation:	This clone was engineered to express the complete ORF with an expression tag. Expression varies depending on the nature of the gene.
Components:	The ORF clone is ion-exchange column purified and shipped in a 2D barcoded Matrix tube containing 10ug of transfection-ready, dried plasmid DNA (reconstitute with 100 ul of water).
Reconstitution Method:	<ol style="list-style-type: none">1. Centrifuge at 5,000xg for 5min.2. Carefully open the tube and add 100ul of sterile water to dissolve the DNA.3. Close the tube and incubate for 10 minutes at room temperature.4. Briefly vortex the tube and then do a quick spin (less than 5000xg) to concentrate the liquid at the bottom.5. Store the suspended plasmid at -20°C. The DNA is stable for at least one year from date of shipping when stored at -20°C.
RefSeq:	NM_001013937.1 , NP_001013959.1
RefSeq Size:	1427 bp
RefSeq ORF:	1134 bp
Locus ID:	298671
Cytogenetics:	5q36
MW:	41.6 kDa