

Product datasheet for **RR203282**

Map3k14 (NM_001108301) Rat Tagged ORF Clone

Product data:

Product Type:	Expression Plasmids
Product Name:	Map3k14 (NM_001108301) Rat Tagged ORF Clone
Tag:	Myc-DDK
Symbol:	Map3k14
Vector:	pCMV6-Entry (PS100001)
E. coli Selection:	Kanamycin (25 ug/mL)
Cell Selection:	Neomycin



[View online »](#)

ORF Nucleotide Sequence:

>RR203282 representing NM_001108301
 Red=Cloning site Blue=ORF Green=Tags(s)

TTTTGTAATACGACTCACTATAGGGCGGCCGGGAATTCGTCGACTGGATCCGGTACCGAGGAGATCTGCC
 GCC**CGGATCGCC**

ATG GCCGTGATGGAAGTGGCCTGCCAGGCACTCTGGTTCGGCAGTCCGGCAGCAGAAGGAGTTGCCA
 AAGCCAAGGAGAAGACACAGTCACCAGGAAGAAGCAGAGCTGCATCTTCCAGCTCGAGGCGGTGGAGAA
 GAGCCCTGTGTTCTGTGGAAAGTGGGAGATCCTCAACGATGTGATCACCAAGGCACAGCCAAGGAAGT
 TCCGAGGGCGGGCCCCCGCCATCTCCATCATCGCCAGGCTGAATGTGAGAATAGCCAAGAGTTAGCC
 CCACCTTCTCAGAGCGCATTTTTCATCGCGGGTTCACAGCAGTACAGCCAGTCTGAGAGTCTTGATCAAAT
 CCCCACAATGTGGCCATGCAACTGAAGGCAAAATGGCCGAGTGTGCCGAAGGGGAAGCGTCACAGC
 AAAGCCCAGAAAAACGTAGGAAGAGGAGTGAAGTCACTGGCCAGGCAGGAGTGGCCTTGCCCAAGC
 CCCTGCCAGAACCCTGAGCAAGAGAGCTGTACCATCCAGTGCAGGAAGATGAGTCTCCACTAGGCAA
 CCTCTATGCCAGAAATGTCTCCAGTTCACCAAGCCTCTGAAGGGACCAGGCCTTGCCACCTGTGCTTT
 AAGAAACAAGATGAAGGCCTGCGACCAGTGTGCTCGACCAGAACTCCACAAACTGATCAGCCCCCTGC
 AATGTCTAAACCAGTGTGAAACTCCACCACCCGAGGCCACAGGCCCCCTGCCACCCCACTCACCC
 GTTCCCCTTACGAGAATGCCCATCCTTTCCATTCTACCCCTGGAGCCCTGGAGACCCTATACACTG
 AACCCGGCCTTCTGGACAACTAGCCGCTGTAAGTGGCCAGCGGCCTCTGCCTGGCCACCACACCTAA
 GCAAACCGGCCTACAGAGACAGTCAAGCCCTGCCTGGCCACATCTGGAGTCCAGCTGCCTGTCCCG
 AGAGGCCCTAGAAAAGTCCCTGCCGAGGAATACCTGGTGCACGCGCTACAAGGAAGTGTGAGCTCAGGC
 CAGGCCACAGCCTGGCTAGCCTGGCTAAGACATGGTCAATCAGGGAGCTCCAAGCTGCAGAGTTACGCC
 CTGAAACTGAGGACAACGAGGGGCTCTGCTTACTGAGAACTCAAACCAAGTGGATTATGATACCGGGA
 AGAGTCCACTGGATGACACACCAGCCTCGGGTGGGCGAGAGGGTCTTCGGCGAAGTCCACAGAATGAAG
 GACAAGCAGACAGGCTTCCAGTGTGCTGTCAAAAAGGTACGGCTTGAGGTATTCGGGCAGAGGAAGTGA
 TAGCCTGTGCCGACTGAGCTCGCCAGGATCGTCCCTCTACGGAGCTGTAAGAGAAGGCCCGTGGGT
 GAACATCTTATGGAGCTGCTAGAAGTGGCTCTTAGGCCAGCTCATAAAGCAGAAGGGCTGTCTGCCA
 GAAGACCGAGCCCTTACTACCTGGCCAGGCCCTGGAGGGGCTGGAATACCTCCATACACACAGGGTTC
 TGCATGGCGACGTCAAAGCTGACAACGTGCTCCTGTCCAGTGTGAAGCCGAGCTGCCCTCTGTGACTT
 CGGCCATGCCTTGTGCCTACAACCTGATGGCTAGGAAAATCCTTGCTCACAGGGGACTACATTCCTGGC
 ACAGAGACCCACATGGCCCGAAGTGGTGTGGGAAGCCCTGTGATGCCAAGGTGCAGATCTGGAGCA
 GCTGTTGCATGATGCTCCACATGCTCAATGGCTGCCACCCTGGACTCAGTACTTCGAGGCCCGCTCTG
 TCTCAAGATTGCCAGCGAGCCTCCACCTGTGAGGAGATTCCACCTTCTGCACACCCCTCACAGCCAG
 GCCATCCAAGAGGGGCTGAGGAAAGAGCCATCCACCGAGCATCTGCCATGGAATTCGGAGGAAAGTGG
 GCAAGGCGTTACAGGAAGTGGGAGTCTGAAAAGCCCTTGAAAGGAGAAATATAAAGAGCCAAGACCTCC
 ACCCAAGACCAAGCCCTGCCCCAGACCTTACATACCCTGCCAAGAGAGAACCACCCAGCCAAGGCC
 AACACAGACGGGGCCCTGAGCGTCAGCCTCCTCTGCCGCTGAACCACCGGAACCGAACAAAGCACCAG
 CCCTGAACCTGAGCAAGGAGGAGTCTGGCACCTGGGAACCCCTGCCTCTGTCTCCCTGGACCCAGCCCC
 TGCCAAAGGCCCCAGCTTGCCAGACCGGAGGGCAACCTTCCCGAGCTGGAGCTACAACAGCTGGAGATA
 GAACTGTTCCATAAACAGCCTGTCCAGCGTTTTCTCTGGAGGAACAGGAACAGATTCTCTCCTGCCTCA
 GCATCGACAGCCTCTCACTGTGAGAGGACAGTGAAGAACCATCTAAGGCCTCTCAGAGCTCACGTGA
 TACCCTGAGTTCGGCGTGCCTCTTGGAGCAGCCAAGCAGAGGCCAGAAGCTCCAGCTGCAGCATGGCG
 CTGGCCCGGGGACGGCCACTGACATCCCGAGCTACTTCAACGGTGTCAAGGTCCAGATACAGTCTCTCA
 ATGGCGAGCACCTGCACATCCGGGAATTCACCGGGTCAAGGTGGGAGACATTGCAACCGGCATCAGCAG
 CCAGATCCCGCCACAGCTTTCAGCTTGGTGACCAAAGATGGACAGCCTGTTTGTATGACATGGAGGTG
 CCAGACTCAGGCATCGACCTGCAGTGCACCCTAGCCCTGATGGCAGCTTCGCTTGGCCCTGGAGGGTCA
 AGCACGGCCAGCTGGAGAACCGCCC

ACGCGTACGCGGCCGCTCGAGCAGAACTCATCTCAGAAGAGGATCTGGCAGCAAATGATATCCTGGATT
 ACAAGGATGACGACGATAAGGTTTAA

Protein Sequence: >RR203282 representing NM_001108301
 Red=Cloning site Green=Tags(s)

MAVMEVACPGTPGSAVGGQKEFAKAKEKTQSPGKKQSCIFQLEAVEKSPVFCGKWEILNDVITKGTAKEG
 SEGPPAISIIAQAEENSQEFSPTFSERIFIAGSQYSQSESLDQIPNNVAHATEGKMARVCRKGRHS
 KARKRRRKRSLAQAGVALAKPLPRTPEQESCTIPVQEDESPLGNLYARNVSOFTKPLKGPLGLHLCF
 KKQDEGLRPVLPPELHKLISPLQCLNHVWKLHHPQATGPLPHPTHPFFSRMPHPFFYPLEPWRPYTL
 NP AFLDKLAAVSGQRPLPGPPHLSKPAYRDSQKPLPGPHLESSCLSREALEKVPAAEYLVHALQGSVSSG
 QAHSASLAKTWSGSSKLQRFSPETEDNEGVLLTEKLPVDYEVREEVHWMTHQPRVGRGSFGEVHRMK
 DKQTGFQCAVKKVRLVFRAEELIACAGLSSPRIVPLYGAVREGPWVNI FMELLEGGSLGQLIKQKGLP
 EDRALYYLGQALEGLEYLHTRVHLHGDVKADNVLLSSDGSRAALCDFGHALCLQPDGLGKSLLTGDYIPG
 TETHMAPEVVLGKPCDAKVDIWSCCMMLHMLNGCHPWTQYFRGPLCLKIASEPPPVIIPPSTPLTAQ
 AIQEGLRKEPIHRASAMELRRKVGKALQEVGGLKSPWKGEYKEPRPPQDQAPCPQTLHTLPRENPPAKA
 NTDGAPERQPLPPEPPEPNKAPALNLSKEESGTWEPLPLSSLDPAKGPSPDRRATFPELELQQLLEI
 ELFLNLSQPFSLLEEQEILSCLSIDLSLSEKNSKASQSSRDTLSSGVHSSWQAEARSSSSCSMA
 LARGRPTDIPSYFNGVKVQIQSLNGEHLHIREFHRVKVGDIA TGISSQIPATAFSLVTKDGQPV CYDMEV
 PDSGIDLQCTLAPDGSFAWAWRVKHGQLENRP

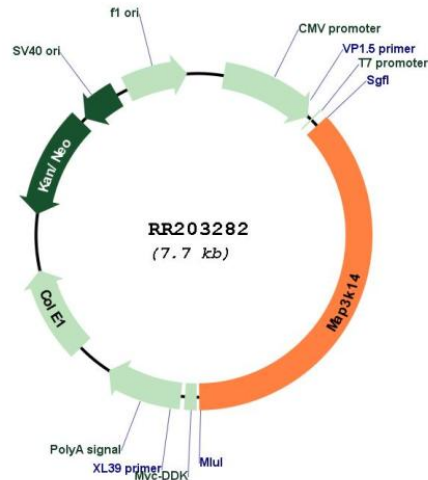
TRTRPLEQKLISEEDLAANDILDYKDDDDKV

Restriction Sites:

SgfI-MluI

Cloning Scheme:



Plasmid Map:


ACCN: NM_001108301

ORF Size: 2826 bp

OTI Disclaimer: The molecular sequence of this clone aligns with the gene accession number as a point of reference only. However, individual transcript sequences of the same gene can differ through naturally occurring variations (e.g. polymorphisms), each with its own valid existence. This clone is substantially in agreement with the reference, but a complete review of all prevailing variants is recommended prior to use. [More info](#)

OTI Annotation: This clone was engineered to express the complete ORF with an expression tag. Expression varies depending on the nature of the gene.

Components: The ORF clone is ion-exchange column purified and shipped in a 2D barcoded Matrix tube containing 10ug of transfection-ready, dried plasmid DNA (reconstitute with 100 ul of water).

Reconstitution Method:

1. Centrifuge at 5,000xg for 5min.
2. Carefully open the tube and add 100ul of sterile water to dissolve the DNA.
3. Close the tube and incubate for 10 minutes at room temperature.
4. Briefly vortex the tube and then do a quick spin (less than 5000xg) to concentrate the liquid at the bottom.
5. Store the suspended plasmid at -20°C. The DNA is stable for at least one year from date of shipping when stored at -20°C.

RefSeq: [NM_001108301.1](#), [NP_001101771.1](#)

RefSeq Size: 4206 bp

RefSeq ORF: 2829 bp

Locus ID: 360640

Cytogenetics: 10q32.1

MW: 103.6 kDa