

## Product datasheet for **RR203267**

### **Ccin (NM\_001005904) Rat Tagged ORF Clone**

#### **Product data:**

|                    |  |
|--------------------|--|
| Product Type:      | Expression Plasmids                      |
| Product Name:      | Ccin (NM_001005904) Rat Tagged ORF Clone |
| Tag:               | Myc-DDK                                  |
| Symbol:            | Ccin                                     |
| Synonyms:          | MGC94933                                 |
| Vector:            | pCMV6-Entry (PS100001)                   |
| E. coli Selection: | Kanamycin (25 ug/mL)                     |
| Cell Selection:    | Neomycin                                 |



[View online »](#)

**ORF Nucleotide Sequence:**

>RR203267 representing NM\_001005904  
 Red=Cloning site Blue=ORF Green=Tags(s)

TTTTGTAATACGACTCACTATAGGGCGGCCGGGAATTCGTCGACTGGATCCGGTACCGAGGAGATCTGCC  
 GCC**GCGATCGCC**

ATGAAACTGGAATTCACAGAAAACTACAACAGCTTTGTGCTGCAAAACCTGAATAAACAGAGGAAGC  
 GCAAAGAGTACTGGGACATGGCCCTGACTGTGGACCACCATGTCTTCTTCGCACATCGCAACGTGCTGGC  
 TGCCGTCTCTCCACTGGTAAAAAGTCTTGTCTCCAGCAACGACATGAAGACCACCGATGAACTCTACATC  
 ACCATTGACCCCAACTACCTGAGTCCAGCCACGGTGGACCAGCTCCTGGACTACTTCTACAGCGGCAAAG  
 TGGTGATCTCAGAACAGAATGTGGAGGAGCTGCCGTGGCGCTCAGTATTTCAATACCCACGCCTTCG  
 GATTCAGTCAATGACTTCTGATTAAGTCCATTCGACGCGTCAACTGCTTGGCTACCTCTTCTTGGCT  
 GAGCTGTTTCGAGCTTAAAGAAGTATCAGACTTGGCCTACTCTGGCATTTCGCGACAACTTCCACTTCTGGG  
 CCAGTCCCAGGGCTCTATGCATTCATGCGCTGCCACCTGTCATCTTCGGCCGCTGCTCCGTGATGA  
 AAACCTTCACGTGCTCAACGAGGACCAGGCTCTCAGCGCACTCATCAATTGGGTGACTTCCGGAAGGAG  
 GAGCGGAAAAATACTTCAAGAAGTCTTCAATTACATCAACCTCAATGCTGTCTCCAACAAGACGCTGA  
 TGTTTGCCAGCAACAAGCTGACTGGCTTGGAGAACAACCTCGGCCACCGGACCTTAATCGAAAGTGTCT  
 GATGGACCGCAAGCAGGAGCGCCGTGCAGCCTGCTGAGCTACCAGCGGAAAGGGGCCCTGCTTGATTCA  
 GTGGTCATCTGGGTGGCCAGAAGGCCATGGCAAGTTCAACGACGGAGTGTTCGCTATATCATCCAGG  
 AGAACCTGTGGCTGAAGCTCTCAGAGATGCCATACCGAGCAGCCGCGCTCAGTCCACTGCTGCTGGCCG  
 TTACATCTACATATCTGGTGGCACCCTGAGCAGATTTAGGACTGAAGCAGCATGGCGGTATGATATG  
 GATGACAACCTCTGGACCAAGCTGCCTGACCTGCCATTGGGCTTGTCTTCCACCATGGTGACCTGTG  
 GGGGAACAGTTTACTCAGTGGTGGGAGCATTGCCCCACGCGGTACGCTCTAACATCTATCGCTACGA  
 TGAACGCAAGGAAGCCTGGTGTTCGACGGCAAGATGAGCATCCCTATGGACGGACTGCAGTGATCACT  
 AAGGGTGACCGGAACCTGTACATTGTCACCGGGCGATGCTGGTGAAGGGCTACATCTCCCGGTCGGTG  
 TGGTGGACTGCTTCGACACCTGTACAGGGGAAGTGGTCCAGTGTACTTTCCCATCGAATCAACCA  
 CCGGCCCTGCTCTCTTCCACCAGGACAATATCTCCGTGTACACAGCCACCGGAGAGCGTGGAAATC  
 AACTTACAGAAGATAAAGGCCAACAAGTCAACCACCTCAGTGCCTCTGTTGCCAACAGTTGTCCTTGG  
 ATGTATCCACGCTATCTGCTCCATCGGAGACAGCAAGGTGTTTGTATGTGGGGTGTACCACAGCCAG  
 CGATGTTACAGACAAAGGACTACACCATCAACCCTAATGCTTACTTGTGGACAAAAGATAGGTGAATGG  
 AAGACCCTTGCTGCCACCCGAGGCACTGGACTGCCCTGCCTGTCTAGCCAAGCTGCCTTGAAGA  
 TTCTTCAAAGAATT

AG**GCGACCG**ACGCGTACGCGGCCGCTCGAGCAGAAACTCATCTCAGAAGAGGATCTGGCAGCAAATGATATCC  
 TGGATTACAAGGATGACGACGATAAGGTTTAA

**Protein Sequence:**

>RR203267 representing NM\_001005904  
 Red=Cloning site Green=Tags(s)

MKLEFTEKNYNSFVLQNLNKQRKRKEYWDMALTVDHHVFFAHRNVLA AVSPLVKS LVSSNDMKTDELVI  
 TIDPNYLSPATVDQLLDYFYSKVVISEQNVEELLRGAQYFNTPRRLRIHCNDFLIKSIIRVNCLRYLFLA  
 ELFELKEVSDLAYSGIRDNFHF WASPEGSMHFMRCPPVIFGRLLRDENLHVLNEDQALSALINWVYFRKE  
 EREKYFKFFNYINLNAVSNKTLMFASNKLTGLENNSAHATLIESVLMDRKQERPCSLLSYQRKGALLDS  
 VVILGGQKAHGKFNDGVFAYIIQENLWLKLEMPYRAAAL SATAAGRYIYISGGTTEQISGLKTAWRYDM  
 DDNSWTKLPDLPIGLVFHTMVTGCGTVYSVGGSIAPRRYVSNIRYDERKEAWCLAGKMSIPMDGTA VIT  
 KGDRNL YIVTGRCLVKGYISRVGVVDFDCTGEVVQCITFPIEFNHRPLL SFHQDNILRVHSHRQSVEI  
 NLQKIKANKSTTSVPLLPNSCLDVSHAICSIGDSKVFVCGGVTTASDVQTKDYTINPNAYLLDQKIGEW  
 KTLACPPPEALDCPACCLAKLPCKILQRI

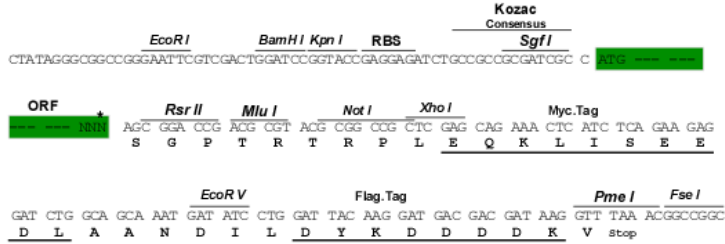
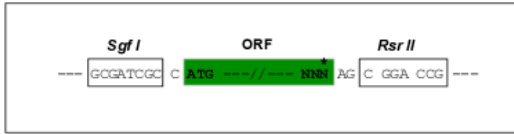
**SGP**TRTRPLEQKLI SEEDLAANDILDYKDDDDKV

**Restriction Sites:**

Sgfl-RsrII

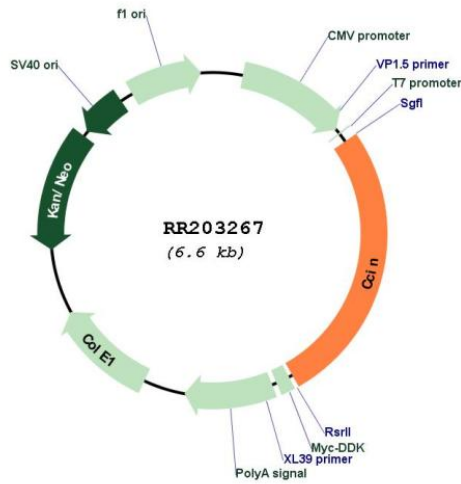
Cloning Scheme:

Cloning sites used for ORF Shuttling:



\* The last codon before the Stop codon of the ORF

Plasmid Map:



ACCN: NM\_001005904

ORF Size: 1764 bp

|                               |   |
|-------------------------------|---|
| <b>OTI Disclaimer:</b>        | The molecular sequence of this clone aligns with the gene accession number as a point of reference only. However, individual transcript sequences of the same gene can differ through naturally occurring variations (e.g. polymorphisms), each with its own valid existence. This clone is substantially in agreement with the reference, but a complete review of all prevailing variants is recommended prior to use. <a href="#">More info</a>  |
| <b>OTI Annotation:</b>        | This clone was engineered to express the complete ORF with an expression tag. Expression varies depending on the nature of the gene.  |
| <b>Components:</b>            | The ORF clone is ion-exchange column purified and shipped in a 2D barcoded Matrix tube containing 10ug of transfection-ready, dried plasmid DNA (reconstitute with 100 ul of water).  |
| <b>Reconstitution Method:</b> | <ol style="list-style-type: none"> <li>1. Centrifuge at 5,000xg for 5min.</li> <li>2. Carefully open the tube and add 100ul of sterile water to dissolve the DNA.</li> <li>3. Close the tube and incubate for 10 minutes at room temperature.</li> <li>4. Briefly vortex the tube and then do a quick spin (less than 5000xg) to concentrate the liquid at the bottom.</li> <li>5. Store the suspended plasmid at -20°C. The DNA is stable for at least one year from date of shipping when stored at -20°C.</li> </ol> |
| <b>RefSeq:</b>                | <a href="#">NM_001005904.1</a> , <a href="#">NP_001005904.1</a>   |
| <b>RefSeq Size:</b>           | 1919 bp   |
| <b>RefSeq ORF:</b>            | 1767 bp   |
| <b>Locus ID:</b>              | 298392  |
| <b>UniProt ID:</b>            | <a href="#">Q5XI58</a>  |
| <b>Cytogenetics:</b>          | 5q22  |
| <b>MW:</b>                    | 66.8 kDa  |
| <b>Gene Summary:</b>          | Possible morphogenetic cytoskeletal element in spermiogenic differentiation.<br>[UniProtKB/Swiss-Prot Function]   |