

Product datasheet for **RR203237**

Serinc2 (NM_001031656) Rat Tagged ORF Clone

Product data:

Product Type:	Expression Plasmids
Product Name:	Serinc2 (NM_001031656) Rat Tagged ORF Clone
Tag:	Myc-DDK
Symbol:	Serinc2
Synonyms:	Tde2l
Vector:	pCMV6-Entry (PS100001)
E. coli Selection:	Kanamycin (25 ug/mL)
Cell Selection:	Neomycin



[View online »](#)

ORF Nucleotide Sequence:

>RR203237 representing NM_001031656
 Red=Cloning site Blue=ORF Green=Tags(s)

TTTTGTAATACGACTCACTATAGGGCGGCCGGGAATTCGTCGACTGGATCCGGTACCGAGGAGATCTGCC
 GCC**CGGATCGCC**

ATGGGGCCTGTCTGGGGCCTGCTCCCTGCTCAGCTGCGCATCCTGCCTCTGTGGCTCTGCACCCTGCA
 TCCTATGCAGCTGCTGCCCTCAACCCGCAACTCCACGGTGAGCCGCCTCCTCTTACCAGCTTCCCTCTT
 CTTGGGGGTGCTGGTGTCTATCATGCTGAGCCCCGAGTGGAGAGTCACTTTACAAGCTGCCCTGG
 GTGTGTGAGGACAGGGCCAGCAACCCGTGGTCTGCAGGGGCCCTGGACTGTGGCTCCCTGCTGGGT
 TCCGCGTGTCTACCGTATGTGCTTGGCCAGCAGCCTTTTTCTTCTTTCATGATGTTAATGATCTG
 CGTCCGAGTAGCCGGACCCGCGAGCAGCCATCCAGAATGGGTTTTGGTTTTTAAATTCCTGATCCTT
 GTGGGAATCACCGTGGTGCCTTCTACATCCCTGATGGCTCCTTCCCAAGATCTGGTCTACTTTGGCG
 TCGTGGGCTCCTCCTTTCATCCTCATCCAGTGATCCTGTTTATTGACTTTGCTCACTCCTGGAATCA
 GCGGTGGCTGTGAAGGCCGAGGAGTGTATTCTCCTGTCTGGTACGCAGGCCTTTTCTTTCACCTTC
 CTCTTTTACCTGTTGCCATTGCCGCCGTGGCACTGATGTTTCGTCTACTACACGGAGTCTGGTGCCTGCC
 ACGAGGGCAAGGTCTTATCGGCCCTCAACCTCACCTTCTGTGTCTGCGTCTCCATCATTGCTGTCCTGCC
 CAAAGTCCAGAGTGCCAGCCTAACTCAGGTCTGCTACAAGCCTCTGTGTAACCTTGTATAACAATGTTT
 GTCACCTGGTCTGCCCTATCCAACGTCCCTGACCAAAAATGCAACCCTCACCTGCCCACTAAGAACGGGA
 CGGGCCAGGTGAACCTGGAGGACTACAGCACAGTGTGGTGGGACGCCCGAGCATTGTGGGCTCGTCAT
 CTTATCCTGTGCACCTTCTTATTAGCCTGAGATCCTCTGACCACCGTCAAGTGAACAGCTTGTGCGAG
 ACAGAGGAGTGTCCAGCAGAAATGGTGCAGCAGCAGGAGTGGCCGTGGTGGACGCCGAACCTATGACA
 ATGAGCAGGACGGTGTACCTACAGCTATTCTTCTTCCACTTCTGCCTGGTGTGCTGCCTCCCTGCATGT
 CATGATGACACTTACCAACTGGTACAGCCTGGGGAGACCCGGAAGATGATTAGCACGTGGACCTCGGTG
 TGGGTGAAGATCTGTCCAGCTGGGAGGGCTGTTCTCTACCTGTGACCCTGGTGGCGCTCTGCTCC
 TGCCCAACAGAGACTTCAGC

ACGCGTACGCGGCCGCTCGAGCAGAAACTCATCTCAGAAGAGGATCTGGCAGCAAATGATATCCTGGATT
 ACAAGGATGACGACGATAAGGTTTAA

Protein Sequence:

>RR203237 representing NM_001031656
 Red=Cloning site Green=Tags(s)

MGACLGACSLSCASCLCGSAPCILCSCCPSTRNSTVSRLLFTGFLFLGVLVSIIMLSPGVESQLYKLPW
 VCEDRAQQPVVLQGPLDCGSLGFRVYRMCFATAAFFFLMMLMICVRSRDPRAAIQNGFWFFKFLIL
 VGITVGAIFYIPDGSFPKIWFYFVGVGSFLFILIQILFIDFAHSWNQRWLCKAEEDSPVWYAGLFFFTF
 LFYLLSIAAVALMFVYYTESGACHEGKVFIGLNLTFVCVSIIVLPAKQVSAQPNSSGLLQASVVTLYTMF
 VTWSALSNVPDQKCNPHLPTKNGTGQVNLQEDYSTVWWDAPSIVGLVIFILCTFFISLRSSDHRQVNSLMQ
 TEECPAEMVQQQVAVGDGRTYDNEQDVTYSYFFHFCLVLAASLHVMMTLTNWYSPGETRKMISTWTSV
 WVKICASWAGLFLYLWTLVAPLLLPNRDFS

TRTRPLEQKLISEEDLAANDILDYKDDDDKV

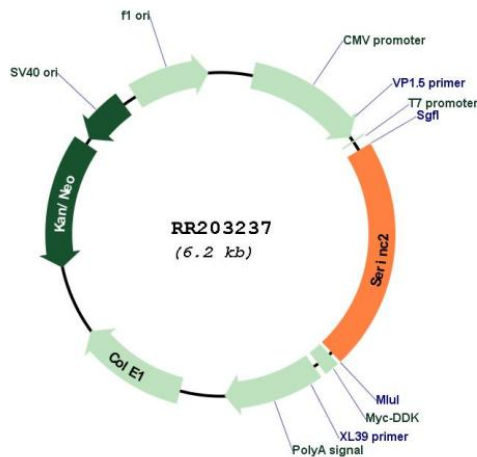
Restriction Sites:

Sgfl-MluI

Cloning Scheme:



Plasmid Map:



ACCN: NM_001031656

ORF Size: 1350 bp

OTI Disclaimer: The molecular sequence of this clone aligns with the gene accession number as a point of reference only. However, individual transcript sequences of the same gene can differ through naturally occurring variations (e.g. polymorphisms), each with its own valid existence. This clone is substantially in agreement with the reference, but a complete review of all prevailing variants is recommended prior to use. [More info](#)

OTI Annotation: This clone was engineered to express the complete ORF with an expression tag. Expression varies depending on the nature of the gene.

Components: The ORF clone is ion-exchange column purified and shipped in a 2D barcoded Matrix tube containing 10ug of transfection-ready, dried plasmid DNA (reconstitute with 100 ul of water).

Reconstitution Method:

1. Centrifuge at 5,000xg for 5min.
2. Carefully open the tube and add 100ul of sterile water to dissolve the DNA.
3. Close the tube and incubate for 10 minutes at room temperature.
4. Briefly vortex the tube and then do a quick spin (less than 5000xg) to concentrate the liquid at the bottom.
5. Store the suspended plasmid at -20°C. The DNA is stable for at least one year from date of shipping when stored at -20°C.

RefSeq: [NM_001031656.1](#), [NP_001026826.1](#)

RefSeq Size: 1879 bp

RefSeq ORF: 1353 bp

Locus ID: 313057

Cytogenetics: 5q36

MW: 50.4 kDa