

Product datasheet for **RR203220**

Smyd3 (NM_001025762) Rat Tagged ORF Clone

Product data:

Product Type: Expression Plasmids
Product Name: Smyd3 (NM_001025762) Rat Tagged ORF Clone
Tag: Myc-DDK
Symbol: Smyd3
Synonyms: MGC114517
Vector: pCMV6-Entry (PS100001)
E. coli Selection: Kanamycin (25 ug/mL)
Cell Selection: Neomycin
ORF Nucleotide Sequence: >RR203220 representing NM_001025762
 Red=Cloning site Blue=ORF Green=Tags(s)

CTATAGGGCGCCGGGAATTCGTCGACTGGATCCGGTACCGAGGAGATCTGCCGCCGCGATCGCC**GGCGC**
GCCC

ATGGAGGTTCTGAAGGTGAAAAGTTCACGACTGCCGACCGGGAAACGGGCTGCGCGTGTGGCCCCAC
 TGGCCCCGGGGAGCTGCTCTCCGCTCCGACCCCTTGGCTTACACTGTGAGCAAGGGGAGTCGTGGCGT
 CGTTTGCATCGCTGCCTCCTGGGAAGGAAAAGCTGATGCGGTGTTCTCAATGCCGGATTGCCAAATAC
 TGCAGCGCCAAGTGTAGAAAAAGCCTGGCCGGACCACAAGCGGAATGCAAAATGCCTCAAAGCTGCA
 AACCCAGGTATCCGCCGACTCCGTGAGACTTCTGGGCAGGGTAGTCGTCAAACTGATGGATGGCAAGCC
 GTCAGAGTCAGAGAACTTTATTCCTTTTATGATCTGGAGTCCAATATTAGCAAACCTCACTGAAGATAAG
 AAAGAGGGCCTGAGGCAACTCGCAATGACATTTCAACATTTTATGAGAGAAGAAATACAGGACGCTTCTC
 AGCTGCCGCTTCTTTGACCTTTTGAAGCCTTCGAAAAGTGATCTGCAACTCATTACCATCTGCAA
 TGCGGAGATGCAGGAGGTGCGCCTTGGCCTGTACCCAGTATGTCTTTGCTGAATCACAGCTGTGACCCC
 AACTGCTCCATTGTGTTCAACGGGCCACCTCTTACTTCGTGCCGTGCGAGAAATGAGGCAGGAGAGG
 AGCTCACTATCTGCTACCTGGACATGCTGATGACCAGCGAGGAACGCCGGAAGCAGCTGAGGGATCAGTA
 CTGCTTTGAGTGTGACTGCTCCGATGCCAAACACAGGACAAGGATGCTGATATGCTGACGGGTGACGAG
 CAAATATGGAAGGAGGTTCAAGAATCACTGAAAAAGATCGAAGAGCTGAAGGCGCACTGGAAGTGGGAAC
 AGGTTCTGGCCCTGTGCCAGCGCATATAAACAGCAACTCGGAACGTCTCCCGACATCAACATCTACCA
 GCTGAAGGTGCTCGACTGTGCCATGGACGCTGCATCAACCTGGGGATGCTGGAGGAGGCGCTGTTCTAT
 GCCATGCGCACCATGGAGCCGTACCGGATTTTTTCCCTGGAAGCCATCCTGTCAGAGGTGTGCAAGTGA
 TGAAGTGGCAAGCTGCAGCTCCATCAAGGCATGTTTCCCAAGCCATGAAGAATCTGCGGCTGGCCTT
 TGACATTATGAAAGTGACCCACGGCCGAGCAGCAGCTTGATTGAAGATTTGATTCTTCTCTGGAAGAA
 TGTGATGCCAACATCAGAGCTTCC

ACGCGTACGCGGCCGCTCGAGCAGAACTCATCTCAGAAGAGGATCTGGCAGCAAATGATATCCTGGATT
 ACAAGGATGACGACGATAAGGTTTAA



Protein Sequence: >RR203220 representing NM_001025762
 Red=Cloning site Green=Tags(s)

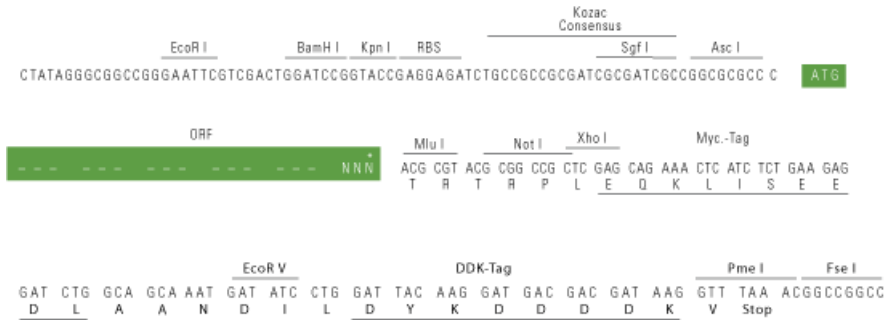
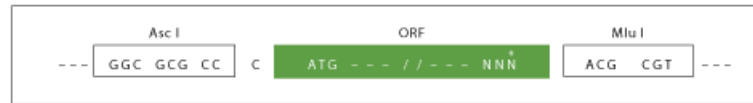
```
MEVLKVEKFTTADRGNGLRVAPLRPGELLFRSDPLAYTVSKGSRGVVCDRCLLGKEKLMRCSQCRIAKY
CSAKCQKKAWPDHKRECKCLKSCKPRYPDSVRLGRVVVKLMDGKPYSEKLYSFYDLESNISKLTEDK
KEGLRQLAMTFQHFMRREEIQDASQLPPSFDLFEAFKVICNSFTICNAEMQEVGVLPSMSSLNHSCDP
NCSIVFNGPHLLLRAVREIEAGEELTICYLDMLMTSEERRKQLRDQYCFECDCIRCQTQDKDADMLTGDE
QIWKEVQESLKKIEELKAHWKWEQVLAALCQAIINSNERLPDINIYQLKVLDCAMDACINLGMLEALFY
AMRTMEPYRIFFPGSHVVRGVQVMKVGKQLQHGMFPQAMKNLRLAFDIMKVTHGREHSLIEDLILLLEE
CDANIRAS
```

TRTRPLEQKLISEEDLAANDILDYKDDDDKV

Restriction Sites: AscI-MluI

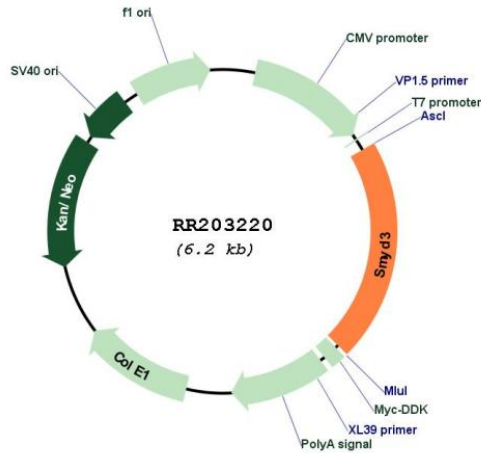
Cloning Scheme:

Cloning sites used for ORF Shuttling:



* The last codon before the Stop codon of the ORF

Plasmid Map:



ACCN: NM_001025762

ORF Size:	1284 bp
OTI Disclaimer:	The molecular sequence of this clone aligns with the gene accession number as a point of reference only. However, individual transcript sequences of the same gene can differ through naturally occurring variations (e.g. polymorphisms), each with its own valid existence. This clone is substantially in agreement with the reference, but a complete review of all prevailing variants is recommended prior to use. More info
OTI Annotation:	This clone was engineered to express the complete ORF with an expression tag. Expression varies depending on the nature of the gene.
Components:	The ORF clone is ion-exchange column purified and shipped in a 2D barcoded Matrix tube containing 10ug of transfection-ready, dried plasmid DNA (reconstitute with 100 ul of water).
Reconstitution Method:	<ol style="list-style-type: none">1. Centrifuge at 5,000xg for 5min.2. Carefully open the tube and add 100ul of sterile water to dissolve the DNA.3. Close the tube and incubate for 10 minutes at room temperature.4. Briefly vortex the tube and then do a quick spin (less than 5000xg) to concentrate the liquid at the bottom.5. Store the suspended plasmid at -20°C. The DNA is stable for at least one year from date of shipping when stored at -20°C.
RefSeq:	NM_001025762.1 , NP_001020933.1
RefSeq Size:	1585 bp
RefSeq ORF:	1287 bp
Locus ID:	498295
Cytogenetics:	13q26
MW:	49.1 kDa