

Product datasheet for **RR203217**

Ceacam3 (NM_012702) Rat Tagged ORF Clone

Product data:

Product Type:	Expression Plasmids
Product Name:	Ceacam3 (NM_012702) Rat Tagged ORF Clone
Tag:	Myc-DDK
Symbol:	Ceacam3
Synonyms:	Cea; Ceacam5; Cear; Cgm1; Cgm4; CGM4AA; RATCEAA; RATCGM4AA
Vector:	pCMV6-Entry (PS100001)
E. coli Selection:	Kanamycin (25 ug/mL)
Cell Selection:	Neomycin



[View online »](#)

ORF Nucleotide
Sequence:

>RR203217 representing NM_012702
Red=Cloning site Blue=ORF Green=Tags(s)

TTTTGTAATACGACTCACTATAGGGCGGCCGGAATTCGTCGACTGGATCCGGTACCGAGGAGATCTGCC
GCC**CGGATCGCC**

ATGGAGCTGTCTCTGTGCTTCCCTGCAAGAGGTGTA CTCCCTGGCGGGGCTCCTGCTCACAGCCTCCC
TCTTAACCTGCTGGCTCCTGCCACCAGTCCCAAGTCTCCATTGAATCCTTACCACCCAGGTGGTTGA
AGGAGAAAATGTTCTTCTACGTGTTGACAAATTTGCCAGAGAATTCATAGCCTTTGTCTGGTACAAAGGG
CTGACAAAACATGAGCCTCGGAGTTGCACTGTATTCACTAACCTATAACGTAACCTGTGACGGGACCTGTGC
ACAGTGGTAGAGAGACATTGTACAGCAATGGGTCCTGTGGATCCAAAATGTCACCCAGAAGGACACAGG
ATTCTACACCCTACGAACATAAGTAATCATGGAGAAATGTATCAAATACATCCCTGCACCTTCATGTG
TACTTCTCCACTTTGACCTGTGGACGCGCTGCCACCTCTGCTCAGCTCAGTATTGAATCAGTGCCGACCA
GCATCTCTAAAGGAGAAAGCGCTCTTCTCCTTGCTCACAATCTCCAGAGAATCTCCGAGCCATTTTCTG
GTATAAAGGGGCGATTGTGTTCAAGGACCTTGAGGTTGCTCGATATGTAATAGGCACAAAATCAAGTGTG
CCGGGGCCTGCCACAACGGCAGAGAGACAATGTACAGCAATGGATCCCTCCTGCTTCAAGTGTCACTC
GGAACGATGCTGGATTCTACACCTTAAAACTCTGAGTACAGATCTGAAAAGTGAATAGCCTATGTGCA
ACTCCAGTGGACACCTGTTTTATGAGCTATGCTGGCCCTCCACTTCTGCCAGCTCACTGTGCAATCA
GCGCCTACCAGCGTTGCTGAAGGAGCAAGCGTTTCTCCTTGCTCATAATCTCCCTGAGAATCTCCGAG
CCATTTTCTGGTATAAAGGGGCGATTTTGTTCAGGACCTTGAGGTTGCTCGATATGTAATAGGCACAAA
TTCAAGTGTGCCGGGCGCTGCCACAGCGCAGAGAGACAATGCACAGCAATGGATCCCTCCTGCTTCAG
AATGTCACTCGGAACGATGCTGGATTCTACACCTTAAAGAACTCTGAGTACAGATCTGAAAAGCTAAAGTAG
TACATGTGCAACTCCAGGTGAACACCTCCTCGTGTGACCCCTCACTCCTGCCACATCAGGATAGA
CCAGTGCCACGGCATGCGGCTAAAGGGGAAAGTGTCTTCTTCAAGTTCGCAATCTGCCAGAGGATCTG
CGAATGTTTATCTGGTTCAAATCTGTGTATACCTCCCAGATCTTTAAAATAGCAGAGTACAGCAGAGCCA
TTAATTACGTCTTCAGGGGCCCTGCACACAGCGGAAGAGAGACAGTGTACACGAATGGATCCCTGCTGCT
CCAGGATGCCACTGAGAAAGACACAGGCTTGTACACACTACAAAATATACAGAAATTTCAAAATTGAA
ACAGCACACGTTCAAGTCAGCGTGCACACCTGTGTTACCCTTCTACCACTGGCCAGCTTGTATCGAAT
CGGTGCCACCCAATGTTGTTGAAGGGGAGACGTTCTCCTACTTGTTCATAATATGCCAGAGAACCTTCA
ATCCTTTTCTGGTACAAAGGCGTAGCCATTGTCAACAGACATGAAATCTCTCGGAACATAATAGCCAGT
AATAGAAGCACATTGGGGCCTGCTCACAGTGGCAGAGAGACAATATATTCTAATGGCTCTCTTCTGCTCC
ACAATGCCACCGAGGAGACAATGGATTATACACCTTATGGACTGTAAACAGACATTCTGAAACTCAAGG
GATACACGTGCACATCCACATATAACAAGCCTGTGGCACAGCCCTTTATCCGAGTCACTGAATCCTCAGTC
AGAGTGAAGAGCTCTGTGGTCTCACCTGCCTCTCAGCTGACACTGGAACCTCCATCCAGTGGCTTTCA
ACAACCAGAACTGCGGCTCACACAGAGGATGTTGCTGTCCCAGACTAAGTGCCAACTCAGCATAGATCC
CGTCAGGAGGGAGGATGCTGGAGAGTATAGGTGTGAGGTCTCCAACCCGGTCAGTTCGAAGACGAGCCTC
CCAGTCAGCCTGGATGTGATCATTGAG

ACGCGTACGCGGCCGCTCGAGCAGAACTCATCTCAGAAGAGGATCTGGCAGCAAATGATATCCTGGATT
ACAAGGATGACGACGATAAGGTTTAA

Protein Sequence: >RR203217 representing NM_012702
 Red=Cloning site Green=Tags(s)

MELSSVLPCKRCTPWGRLLLTASLLTCWLLPTTAQVSIESLPPQVVEGENVLLRVDNLPENLIAFVWYKG
 LTNMSLGVALYSLTYNVTVTGPVHSGRETLYSNGSLWIQNVTKDGTGFTLRTISNHGEIVSNTSLHLHV
 YFSTLTCGRAATSQLSIESVPTSISKGESALLLAHNLPENLRAIFWYKGAIVFKDLEVARVYVIGTNSV
 PGPANHGRETMYSNGSLLLQNVTRNDAGFYTLKTLSTDLKTEIAYVQLQVDTCFMSYAGPPTSAQLTVES
 APTSVAEGASVLLLHAHNLPENLRAIFWYKGAILFKDLEVARVYVIGTNSVPGPAHSGRETMHSNGSLLLQ
 NVTRNDAGFYTLRTLSTDLKAKVVHVQLQVNTSSCCDPLTPAPLTIDPVPRHAAKGESVLLQVRNLPEDL
 RMFIWFKSVYTSQIFKIAEYSRAINYVFRGPAHSGRETYTNGSLLLQDATEKDTGLYTLQIYRNFKIE
 TAHVQVSVHTCVHPSTTGQLVIESVPPNVVEGDVLLL VHNMPENLQSF SWYKGAIVNRHEISRNIAS
 NRSTLGP AHSGRETIYSNGSLLLHNATEEDNGLYTLWTVNRHSETQGIHVHIHIYKPAQPFIRVTESSV
 RVKSSVLTCL SADTGT SIQWLFNNQLRLTQRMLLSQTKCQLSIDPVRREDAGEYRCEVSNPVSSKTSL
 PVSLDVIIE

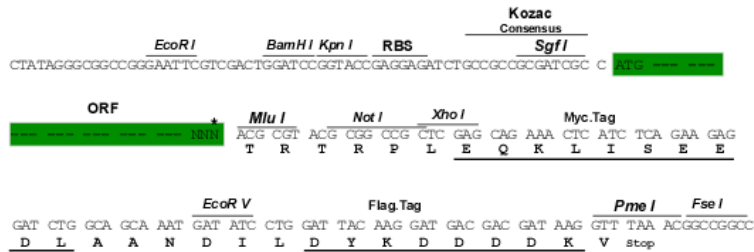
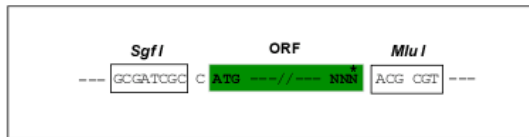
TRTRPLEQKLI SEEDLAANDILDYKDDDDKV

Restriction Sites:

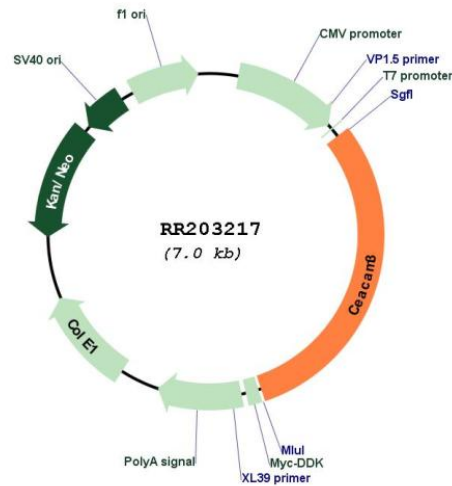
Sgfl-MluI

Cloning Scheme:

Cloning sites used for ORF Shuttling:



* The last codon before the Stop codon of the ORF

Plasmid Map:


ACCN: NM_012702

ORF Size: 2127 bp

OTI Disclaimer: The molecular sequence of this clone aligns with the gene accession number as a point of reference only. However, individual transcript sequences of the same gene can differ through naturally occurring variations (e.g. polymorphisms), each with its own valid existence. This clone is substantially in agreement with the reference, but a complete review of all prevailing variants is recommended prior to use. [More info](#)

OTI Annotation: This clone was engineered to express the complete ORF with an expression tag. Expression varies depending on the nature of the gene.

Components: The ORF clone is ion-exchange column purified and shipped in a 2D barcoded Matrix tube containing 10ug of transfection-ready, dried plasmid DNA (reconstitute with 100 ul of water).

Reconstitution Method:

1. Centrifuge at 5,000xg for 5min.
2. Carefully open the tube and add 100ul of sterile water to dissolve the DNA.
3. Close the tube and incubate for 10 minutes at room temperature.
4. Briefly vortex the tube and then do a quick spin (less than 5000xg) to concentrate the liquid at the bottom.
5. Store the suspended plasmid at -20°C. The DNA is stable for at least one year from date of shipping when stored at -20°C.

RefSeq: [NM_012702.2](#), [NP_036834.2](#)

RefSeq Size: 3043 bp

RefSeq ORF: 2130 bp

Locus ID: 24926
Cytogenetics: 1q21
MW: 78.3 kDa
Gene Summary: carcinoembryonic antigen related molecule that may function as a receptor; belongs to immunoglobulin superfamily [RGD, Feb 2006]