

## Product datasheet for **RR203201**

### Tk2 (NM\_001106166) Rat Tagged ORF Clone

#### Product data:

Product Type:	Expression Plasmids
Product Name:	Tk2 (NM_001106166) Rat Tagged ORF Clone
Tag:	Myc-DDK
Symbol:	Tk2
Vector:	pCMV6-Entry (PS100001)
E. coli Selection:	Kanamycin (25 ug/mL)
Cell Selection:	Neomycin
ORF Nucleotide Sequence:	>RR203201 representing NM_001106166 Red=Cloning site Blue=ORF Green=Tags(s)

TTTTGTAATACGACTCACTATAGGGCGGCCGGAATTCGTCGACTGGATCCGGTACCGAGGAGATCTGCC  
GCC**CGATCGCC**

ATGCTGCTGCGGTGCTCCGTAGCTGGGCTGCCCGGTGCTACGCAGCATGGGCCCGGGAGCTCAGGGA  
GCCCCGGGAGTCTCGATTCGGGCGCTGGGCCGCTGTGGCACCTCGCCGCGCTGTCTCCGATAAAGA  
TAGAGAAAAAGATAAGGAGAAAAAGCAGTGGTTGTATTGAGGGCAATATTGCAAGTGAAAGACGACG  
TGCCTGGAGTTTTTCTCCAACACAACAGACGTCGAGGTGTTAATGGAGCCTGTGCTCAAGTGGAGAAATG  
TCCACGGTCATAACCCTCTGAGTCTCATGTACCATAATGCCAGTCGGTGGGCGCTCACGCTGCAGACATA  
TGTGCAGCTCACCATGCTGGACCAGCACACTCGTCCTCAGATGTCACCTGTACGTTGATGGAAAGGTCA  
ATTTACAGCGCAAGATACATTTTTGTAGAAAACCTGTATAGAAGTGGAAAGATGCCCGAGTTGACTATG  
CGATTCTGTCTGAGTGGTTTACTGGATCATCAAGAACATTGATGTCTCTGTTGATCTGATGTTTATCT  
TCGAACCACTCCTGAAATCTGCTACCAGAGATTAAGATGAGGTGCCGGGAAGAGGAGAAAGTCATTCCG  
GTGGAATACCTCAGTGTATTACCACCTCTACGAGGAGTGGCTGGTCACTGGTAGCCTTTCCAGCTG  
CAGCCCCGTGTTCTGGTGATTGAGGCTGACCACAACCTGGAGAAAATGTTAGAAGCTTTGAGCAAACCG  
GGCCCGGATTAACCTCCAGAGAATTGAAGCATGGGCCT

**ACGCGT**ACGCGGCCGCTCGAGCAGAAACTCATCTCAGAAGAGGATCTGGCAGCAAATGATATCCTGGATT  
ACAAGGATGACGACGATAAGGTTTAA



[View online »](#)

**Protein Sequence:** >RR203201 representing NM\_001106166  
Red=Cloning site Green=Tags(s)

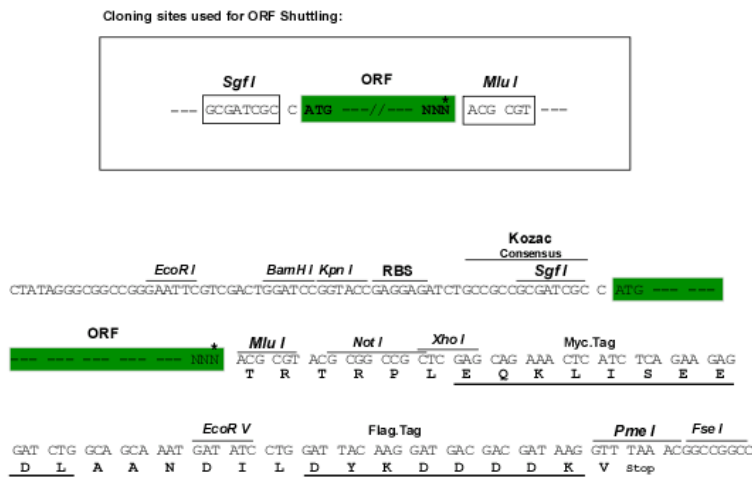
MLLRSLRSLRSLRSMGPGSSGSPGSLDSGAGPLWAPRRACPPDKDREKDKKAVVCIEGNIASGKTT  
 CLEFFSNTT DVEVLMEPVLKWRNVHGHNPLSLMYHNASRWGLTLQTYVQLTMLDQHTRPQMSPVRLMERS  
 IYSARYIFVENLYRSGKMPEDVYAILSEWFDWIKNIDVSDLVLYLRTTPEICYQLKMRCEEKVIIP  
 VEYLSAIHHL YEEWLVTGSLFPAAPVLVIEADHNLEKMLELFEQNRARILTPENWKHG

TRTRPLEQKLISEEDLAANDILDYKDDDDKV

**Restriction Sites:**

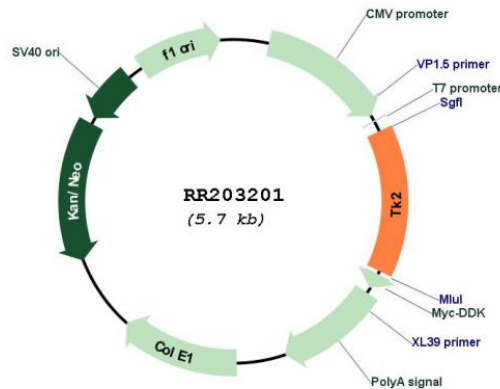
SgfI-MluI

**Cloning Scheme:**



\* The last codon before the Stop codon of the ORF

**Plasmid Map:**



**ACCN:** NM\_001106166

**ORF Size:** 810 bp

<b>OTI Disclaimer:</b>	The molecular sequence of this clone aligns with the gene accession number as a point of reference only. However, individual transcript sequences of the same gene can differ through naturally occurring variations (e.g. polymorphisms), each with its own valid existence. This clone is substantially in agreement with the reference, but a complete review of all prevailing variants is recommended prior to use. <a href="#">More info</a>
<b>OTI Annotation:</b>	This clone was engineered to express the complete ORF with an expression tag. Expression varies depending on the nature of the gene.
<b>Components:</b>	The ORF clone is ion-exchange column purified and shipped in a 2D barcoded Matrix tube containing 10ug of transfection-ready, dried plasmid DNA (reconstitute with 100 ul of water).
<b>Reconstitution Method:</b>	<ol style="list-style-type: none"><li>1. Centrifuge at 5,000xg for 5min.</li><li>2. Carefully open the tube and add 100ul of sterile water to dissolve the DNA.</li><li>3. Close the tube and incubate for 10 minutes at room temperature.</li><li>4. Briefly vortex the tube and then do a quick spin (less than 5000xg) to concentrate the liquid at the bottom.</li><li>5. Store the suspended plasmid at -20°C. The DNA is stable for at least one year from date of shipping when stored at -20°C.</li></ol>
<b>RefSeq:</b>	<a href="#">NM_001106166.1</a> , <a href="#">NP_001099636.1</a>
<b>RefSeq Size:</b>	2389 bp
<b>RefSeq ORF:</b>	813 bp
<b>Locus ID:</b>	291824
<b>Cytogenetics:</b>	19p14
<b>MW:</b>	31.1 kDa