

Product datasheet for RR203190

Tacstd2 (NM_001009540) Rat Tagged ORF Clone

Product data:

| | |
|---------------------------|--|
| Product Type: | Expression Plasmids |
| Product Name: | Tacstd2 (NM_001009540) Rat Tagged ORF Clone |
| Tag: | Myc-DDK |
| Symbol: | Tacstd2 |
| Synonyms: | Prp1; Trop2 |
| Mammalian Cell Selection: | Neomycin |
| Vector: | pCMV6-Entry (PS100001) |
| E. coli Selection: | Kanamycin (25 ug/mL) |
| ORF Nucleotide Sequence: | >RR203190 representing NM_001009540 Red=Cloning site Blue=ORF Green=Tags(s) |

TTTTGTAATACGACTCACTATAGGGCGCCGGGAATTCGTCGACTGGATCCGGTACCGAGGAGATCTGCC
GCC**CGATCGCC**

ATGGCGAGGGCTTGGATCTAGCACCGCTGCTACTGCTACTGCTGGCGATGGTGGCCGGCTTTTGCACGG
CCCAGATCAACTGCACATGCCCTACCAACAAGATGACCGTCTGCAACTCTAATGGCCAGGTGGGTCTG
CCAATGTCGGGAATCGGCTCGCAGGTGTTGGTCGACTGCTCCACGCTAACTTCCAAGTGCCTGCTACTC
AAGGCGCGCATGAGCGCCGAAAGAGCAGCCGACACTGGTGAATCCGAGCGAGCACGCGATCTTGACA
ACGATGGCCTCTACGACCCGGAGTGTGACGACAAGGGCCGCTTCAAGGCGGCCAGTGAACCCAGACCTC
GGTGTGCTGGTGCCTAACTCGGTGGGCGTGCGCCGAACGGACAAGGGAGACCAGAGCCTGCGCTGCGAC
GAAGTGGTGCGAACCCACCACATCCTCATTGAGTTGCGCCACCGCCGACAGACCAGCCTTCAACCACT
CTGACCTAGACTCCGAGCTGCGGCGGCTCTTCAAGGAACGCTACAAGCTGCACCCAGCTTCTGGCCGC
GGTGCCTACGAAGAGCCACCATCCAGATCGAGCTGCAGCAGAACGCGTACAGAAAGGGCCTGAGAGAC
GTGGACATCGCTGACGCCGCTACTACTCGAAAGGGACATCAAAGGCGAGTCACTGTTTCGTGGGCCGTC
GCGGCTGGACGTGACGTTGCGTGGGGAGCCCTGCATGTGGAGCGGACTCTCATCTACTACCTGGACGA
GAAGCCCCCAGTTCCTCATGAAGCGCCTCACCACCGGCTCATTGCCGTCATCGTGTGTCGCGGCTG
GCACTAGTGGCCGGTGTGGTGGTCTTGGTGGTCAACAACCGAGGAAATCAGGAAAATACAAAAGGTGG
AGCTTAAGGAGCTAGGGGAGATGAGAAGCGAACCTAGCTTGAAGGAGCTAGGGGAGATGAGAAGC
GAACCTAGCTTG

AG**CGGACCG**ACGCGTACGCGGCCGCTCGAGCAGAACTCATCTCAGAAGAGGATCTGGCAGCAAATGATATCC
TGGATTACAAGGATGACGACGATAAGGTTTAA



[View online »](#)

Protein Sequence: >RR203190 representing NM_001009540
 Red=Cloning site Green=Tags(s)

MARGLDLAPLLLLLLAMVAGFCTAQINCTCPTNKMTVCNSNGPGGVCQCRAIGSQVLVDCSTLTSKCLLL
 KARMSARKSSRRLVNPSEHAILDNDGLYDPECDDKGRFKARQCNQTSVCWCVNSVGVRRTDKGDQSLRCD
 EVVRTHHILIELRHRPTDRAFNHSDLDSELRRLLFKERYKLHPSFLAAVHYEPTIQIELQQNASQKGLRD
 VDIADAAYYFERDIKESL FVGRRLDVQVRGEPLHVERTLIYYLDEKPPQFSMKRLTTGLIAVI AVVAV
 ALVAGVVVLVVTNRRKSGKYKVELKELGEMRSEPSLSLRS*GR*EANLA

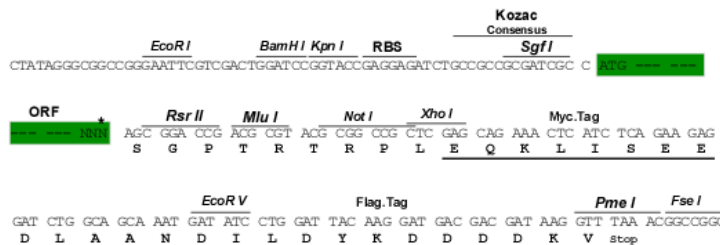
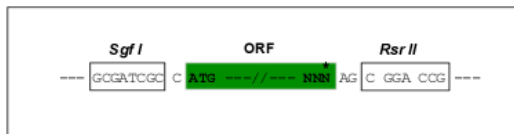
SGPTRRPLEQKLI SEEDLAANDILDYKDDDDKV

Chromatograms: https://cdn.origene.com/chromatograms/ja1630_e07.zip

Restriction Sites: SgfI-RsrII

Cloning Scheme:

Cloning sites used for ORF Shuttling:



* The last codon before the Stop codon of the ORF

ACCN: NM_001009540

ORF Size: 951 bp

OTI Disclaimer: The molecular sequence of this clone aligns with the gene accession number as a point of reference only. However, individual transcript sequences of the same gene can differ through naturally occurring variations (e.g. polymorphisms), each with its own valid existence. This clone is substantially in agreement with the reference, but a complete review of all prevailing variants is recommended prior to use. [More info](#)

OTI Annotation: This clone was engineered to express the complete ORF with an expression tag. Expression varies depending on the nature of the gene.

Components: The ORF clone is ion-exchange column purified and shipped in a 2D barcoded Matrix tube containing 10ug of transfection-ready, dried plasmid DNA (reconstitute with 100 ul of water).

Reconstitution Method:

1. Centrifuge at 5,000xg for 5min.
2. Carefully open the tube and add 100ul of sterile water to dissolve the DNA.
3. Close the tube and incubate for 10 minutes at room temperature.
4. Briefly vortex the tube and then do a quick spin (less than 5000xg) to concentrate the liquid at the bottom.
5. Store the suspended plasmid at -20°C. The DNA is stable for at least one year from date of shipping when stored at -20°C.

RefSeq Size: 1724 bp

RefSeq ORF: 954 bp

Locus ID: 494343

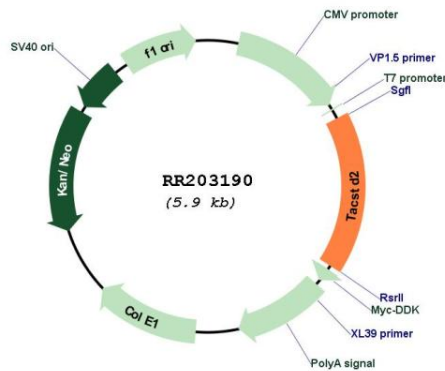
UniProt ID: [Q6P9Z6](#)

Cytogenetics: 4q31

MW: 35.5 kDa

Gene Summary: May function as a growth factor receptor.[UniProtKB/Swiss-Prot Function]

Product images:



Circular map for RR203190