

Product datasheet for **RR203163**

Mob4 (NM_133528) Rat Tagged ORF Clone

Product data:

Product Type: Expression Plasmids
 Product Name: Mob4 (NM_133528) Rat Tagged ORF Clone
 Tag: Myc-DDK
 Symbol: Mob4
 Synonyms: Mobkl1; Mobkl3; phocein; Phocn; Prei3
 Vector: pCMV6-Entry (PS100001)
 E. coli Selection: Kanamycin (25 ug/mL)
 Cell Selection: Neomycin
 ORF Nucleotide Sequence: >RR203163 representing NM_133528
 Red=Cloning site Blue=ORF Green=Tags(s)

TTTTGTAATACGACTCACTATAGGGCGCCGGAATTCGTCGACTGGATCCGGTACCGAGGAGATCTGCC
 GCC**CGATCGCC**

ATGGTCATGGCGGAGGGACGGCAGTGCTGAGGCGGAACAGGCCAGGCACCAAGGCGCAGGATTTCTATA
 ATTGGCCTGATGAATCATTGATGAAATGGACAGTACACTTGCTGTTGAGCAGTATATTCAACAGAACAT
 AAGGGCAGACTGCTCCAATATTGACAAAATTCTTGAACCACCTGAAGGTCAAGATGAAGGTGATGGAAG
 TATGAACATTTAAGGCAATTCTGCCTTGAACAAATGGACTTGCTGTCAAACCTCAGAGTGAGTGCCATC
 CTGATACTTGTACTCAGATGACAGCAACTGAACAATGGATTTTTCTTTGTGCAGCTCATAAACTCCAAA
 AGAGTGTCTGCCATAGATTATACAAGACACACTGGATGGTGTGCTGCATGTCTTCTGAATAGCAATAAA
 TATTTTCCCAGCAGGGTTAGCATAAAAGAATCATCTGTAGCAAACTAGGATCAGTGTGCCGTAGGATTT
 ACAGAATATTCTCACATGCCTATTTTCATCACCAGCAGATATTTGATGAATATGAAAATGAAACATTTT
 ATGTCACCGGTTTACCAAATTTGTGATGAAATATAATTTGATGTCGAAGGATAACCTGATTGTACCAAT
 TTAGAAGAGGAAGTTCAGAATTCAGTTTCTGGGAAAGTGAAGCA

ACGCGTACGCGGCCGCTCGAGCAGAACTCATCTCAGAAGAGGATCTGGCAGCAAATGATATCCTGGATT
 ACAAGGATGACGACGATAAGGTTTAA



[View online »](#)

Protein Sequence: >RR203163 representing NM_133528
 Red=Cloning site Green=Tags(s)

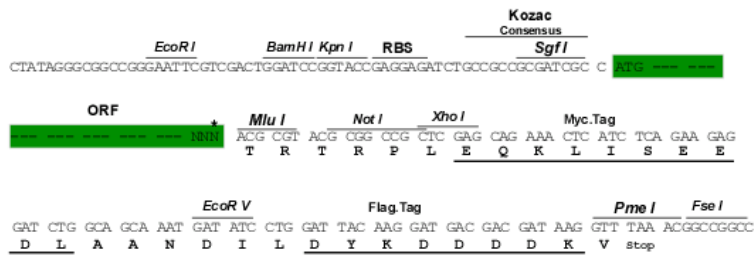
MVMAEGTAVLRRNRPGTKAQDFYNWPDESFDMDSTLAVQQYIQNIRADCSNIDKILEPPEGQDEGVWK
 YEHLRQFCLELNGLAVKLQSECHPDTCTQMTATEQWIFLCAAHKTPKECPAIDYRHTLDGAACLLNSNK
 YFPSPRSVIKESVAKLGSVCRRIRYRIFSHAYFHRQIFDEYENETFLCHRFTKFMKYNLMSKDNLIVPI
 LEEEVQNSVSGESEA

TRTRPLEQKLISEEDLAANDILDYKDDDDKV

Restriction Sites: SgfI-MluI

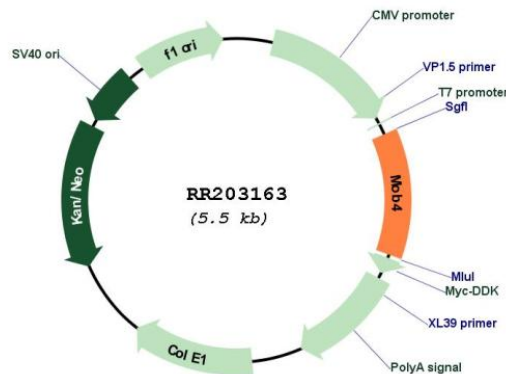
Cloning Scheme:

Cloning sites used for ORF Shuttling:



* The last codon before the Stop codon of the ORF

Plasmid Map:



ACCN: NM_133528

ORF Size: 675 bp

OTI Disclaimer:	The molecular sequence of this clone aligns with the gene accession number as a point of reference only. However, individual transcript sequences of the same gene can differ through naturally occurring variations (e.g. polymorphisms), each with its own valid existence. This clone is substantially in agreement with the reference, but a complete review of all prevailing variants is recommended prior to use. More info
OTI Annotation:	This clone was engineered to express the complete ORF with an expression tag. Expression varies depending on the nature of the gene.
Components:	The ORF clone is ion-exchange column purified and shipped in a 2D barcoded Matrix tube containing 10ug of transfection-ready, dried plasmid DNA (reconstitute with 100 ul of water).
Reconstitution Method:	<ol style="list-style-type: none">1. Centrifuge at 5,000xg for 5min.2. Carefully open the tube and add 100ul of sterile water to dissolve the DNA.3. Close the tube and incubate for 10 minutes at room temperature.4. Briefly vortex the tube and then do a quick spin (less than 5000xg) to concentrate the liquid at the bottom.5. Store the suspended plasmid at -20°C. The DNA is stable for at least one year from date of shipping when stored at -20°C.
RefSeq:	NM_133528.1 , NP_598212.1
RefSeq Size:	2513 bp
RefSeq ORF:	678 bp
Locus ID:	171050
UniProt ID:	Q9QYW3
Cytogenetics:	9q31
MW:	26 kDa
Gene Summary:	binds striatin family members striatin; SG2NA; and zinedin [RGD, Feb 2006]