

Product datasheet for **RR203160**

Gripap1 (NM_053807) Rat Tagged ORF Clone

Product data:

Product Type:	Expression Plasmids
Product Name:	Gripap1 (NM_053807) Rat Tagged ORF Clone
Tag:	Myc-DDK
Symbol:	Gripap1
Synonyms:	Grasp1
Vector:	pCMV6-Entry (PS100001)
E. coli Selection:	Kanamycin (25 ug/mL)
Cell Selection:	Neomycin



[View online »](#)

ORF Nucleotide Sequence:

>RR203160 representing NM_053807
 Red=Cloning site Blue=ORF Green=Tags(s)

TTTTGTAATACGACTCACTATAGGGCGGCCGGAATTCGTCGACTGGATCCGGTACCGAGGAGATCTGCC
 GCC**CGGATCGCC**

ATGGCGCAAGCTCTGTCTGAAGAGGAGTTCAACGGATGCAGACACAGCTCCTGGAACCCGGACAATA
 ACTACCAGCTTTTCAGATGAACTCCGGAAGAATGGTGTGAACTTTCCAGTCTTCGACAGAAGGTCGCCTA
 CCTGGATAAGGAATTCAGTAAAGCTCAAAGGCACTAAGCAAGAGCAAGAAAGCTCAGGAAGTGGAGGTA
 CTGCTGAGTGA AAAAGAGATGCTGCAGGCAAAGCTGCACAGCCAGGAGGAGGACTTCCGTTTGCAGAA
 GTACACTTATGGCCGAGTTCAGCAAGCTCTGCAGCCAGCTGGAGCAGCTGGAGCTGGAGAACCGACA
 CAAGGAAGGGGTTCTGGAGCAGCTGGACCACATGTGGACGGGGAGCTGCTGAGGCTGCAGGCAGAGA
 ACAGCCTTGCAGAAGAATGCGCAGCTGCAGGAGCGCTATGGGAAAGAGGCTGTGAGGCCCTCCGCTG
 TCAGTGAGGGCCAAGGAGATCCACCAGGAGATGTACTCCCATTTCTTGTCTCCATGCCATTGGCAGA
 AGTGGAGCTGAAGTGGGAAATGGAGAGAGAAGAAAAAAGTTGCTTTGGGAACAGCTACAAGGCTTAGAG
 AGCTCAAAGCAAGCTGAAACCTCCAGACTCCAGGAGGAACCTTGCTAAGCTCTCTGAGAAATGAAAAA
 AACAGGAAAGTTTTTGGCGTCTACAGACAGAGAAGGAAACACTGTTAATGATAGCAGGAACAAAATTTGA
 AGAATTGCAACAACGGAAGGAAGCTGATCTGAAAGCCAGTTGGCTCGCACCCAAAAACTACAGCAGGAA
 CTTGAGGCTGCCAATCAGAGCTTGGCAGAGCTAAGAGATCAGCGGCAGGGGGAGCGTCTGGAGCATGCAG
 CAGCACTGCGGGCCCTACAAGATCAGGTGTCCAGCCAGAGTGCAGATGCGCAGGAACAAGTGAAGGGCT
 ATTTGGCTGAGAACATGCCTTGAGGACTAGCTTGGCCGCTCTGGAGCAGATCCAGACAGCAAAGACACAG
 GAACTGAATATGCTTCGGAACAGAACACTGAACTCCAGCTCCAGGAGTCGTTAAGGCAATAGCCGCTATG
 AAGAGCTTATGGGACAGAAAGACGACTCAACTCCAGCTCCAGGAGTCGTTAAGGCAATAGCCGCTATG
 GCTGGAACAACACTACAAGAAATGGGGCAGGAGAAGGAGCAGCTGATCCAGGATCTCCAGGAAGCTCGGA
 AGTGTCTGAGAAAAGGAAGTCTGCTGGATGAGCTAGCCATGGAGACACTGCAGGAGAAGTCCCAGCACA
 AAGAAGAATTGGGGGCTGTCCGTTACGGCATGAGAAGGAGATGCTGGGGTGGAGCCGTTATGAGCG
 GGAGCTTCGAGAACTGCATGAGGACAAGAAACGGCAGGAGGAGGAGCTCCGGGGCAGATTCGTGAGGAG
 AAGGCTCGAACAAAGGAATTAGAAAATCTTCAGCACACAGTGGAAAGAACTTCAGGCTCAGGTACTTCCA
 TGGATGGAGCCAAGGGCTGGTTTGAACGGCCCTGAAGGAAGCTGAGGAATCCTTACTGCAGCAAGAGCA
 GGAACAGGAGGAAACCTCAAGCAGTCCCGGGAGCAGCACGCTGCCGAGCTGAAGGGCAAGGAGGAAGAG
 CTTCAGAAATGTTGAGATCAGCTCCAGCAGGCCAGGAAGAGCGAGATGGCCATGTGAAGACCATCAGCA
 ACCTGAAGCAGGAGGTAAGGACACAGTGGACGGCAGCGGATCCTGGAAAAGAAAGGCAGTGTGTGCT
 CAAAGACCTTAAGAGGCAGCTGCACCTAGAGCGGAAGCGGGCTGATAAGCTGCAGGAACGGCTGCAGGAG
 ATCCTGACTAACAGCAAGAGCCGCACAGGCCTTGGAGAGCTGGTTCTCTCTGAGATGAACTCACCAAGCA
 GGACCCAGACAGGGGACAGCAGTAGCGTCTCCTCCTTCAGTACCAGGAGATCTTGAAGGAAAAGGAGAG
 TTCAGCCATCCCAGCCAGGTCCTATCCAGCAGTCTCAGGCGCAGCCCTCGGCCAGCAGAGCTGTCA
 GATGAGGAAGTGGCTGAGCTGTTTTCAGAGGCTGGCCGAGACACAGCAGGAGAAAATGGATGCTGGAGGAG
 AGGTGAAACACCTGGAGGTGAGCAGCGCCTCGATGGCGGAAGACCTCTGTGCGAAAAGTCCATCATTGA
 GACCTACGTGATGACAGCCGATTGATGTCTGTGGCAGCAGGCCACACAGCCGAAGTGGGCTGGGC
 AGTGTCTGAGAGACCTAGTGAAGCCCGCGATGAGAACCTTCGGGAAATGAACAAGAAGCTGCAGAAC
 TGTGGAGGAGCAACTACCAAGAACATGCACTTGACAAAGGACATGGAAGTTCTATCCCAAGAAATTTG
 GCGGCTCAGCAAGGAATGCGTGGGTCCCTGACCCAGACCTAGAACCTGGAGAAGCCAAC

ACGCGTACGCGGCCGCTCGAGCAGAACTCATCTCAGAAGAGGATCTGGCAGCAATGATATCCTGGATT
 ACAAGGATGACGACGATAAGGTTTAA

Protein Sequence: >RR203160 representing NM_053807
 Red=Cloning site Green=Tags(s)

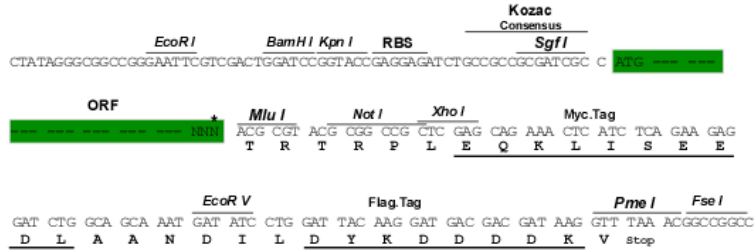
MAQALSEEEFQRMQTQLLELRTNNYQLSDELKNGVELSSLRQKVAYLDKEFSKAQKALSKSKKAQEVEV
 LLSEKEMLQAKLHSQEEDFRLQNSTLMAEFSKLCSQLELELENRQLKEGVPGAAGPHVDGELLRLQAEN
 TALQKNMAALQERYGKEAVRPSAVSEGQDPPGDVLPISLSPMPLAEVELKWEMEREKLLWEQLQGLE
 SSKQAETSRLQEELAKLSEKLEKKEQESFCRLQTEKETLFNDSRNKIEELQQRKEADLKAQLARTQKLQQE
 LEAANQSLAELRDQRQGERLEHAAALRALQDQVSSQSADAQEVEGLLAENNALRTSLAALEQIQTAKTQ
 ELNMLREQNTLAAELKHRQADYEELMGQKDDLNSQLQESLRANSRLLEQLQEMGQEKEQLIQDLQEAR
 SAEKRKVMLDELAMETLQEKSQHKEELGAVRLRHEKEMLGVRARYERELRELHEDKKRQEEELRGQIREE
 KARTRELENLQHTVEELQAQVHSMGAKGWFERRLKEAEESSLQEQEQEETLKQCREQHAAELKGKEE
 LQNVRDQLQQAQEERDGHVKTISNLKQEVKDTVQQRILEKKGSVAVLKD LKRLHLERKRADKLQERLQE
 ILTNSKSRTGLEELVLEMNPSRTQTGDSSSVSSFSYREILKEKESSAIPARLSSSPQAQPPRPAELS
 DEEVAELFQRLAETQQEKWMLEEKVKHLEVSSASMAEDLCRKSIIETYVMSRIDVSVAAGHTDRSGLG
 SVLRDLVKPGDENLREMNNKLQNMLEEQLTKNMHLHKDMEVLSQEIIVRLSKECVGSPDPDLEPGEAN

TRTRPLEQKLISEEDLAANDILDYKDDDDKV

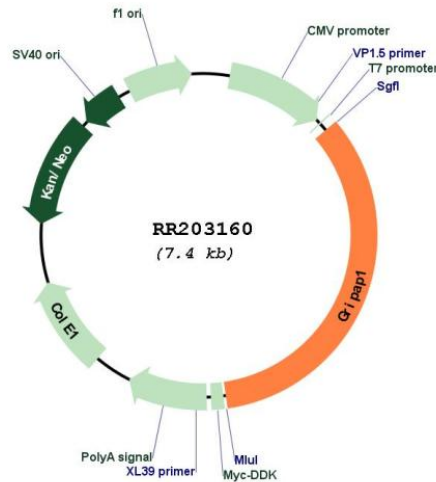
Restriction Sites: Sgfi-MluI

Cloning Scheme:

Cloning sites used for ORF Shuttling:



* The last codon before the Stop codon of the ORF

Plasmid Map:


ACCN: NM_053807

ORF Size: 2511 bp

OTI Disclaimer: The molecular sequence of this clone aligns with the gene accession number as a point of reference only. However, individual transcript sequences of the same gene can differ through naturally occurring variations (e.g. polymorphisms), each with its own valid existence. This clone is substantially in agreement with the reference, but a complete review of all prevailing variants is recommended prior to use. [More info](#)

OTI Annotation: This clone was engineered to express the complete ORF with an expression tag. Expression varies depending on the nature of the gene.

Components: The ORF clone is ion-exchange column purified and shipped in a 2D barcoded Matrix tube containing 10ug of transfection-ready, dried plasmid DNA (reconstitute with 100 ul of water).

Reconstitution Method:

1. Centrifuge at 5,000xg for 5min.
2. Carefully open the tube and add 100ul of sterile water to dissolve the DNA.
3. Close the tube and incubate for 10 minutes at room temperature.
4. Briefly vortex the tube and then do a quick spin (less than 5000xg) to concentrate the liquid at the bottom.
5. Store the suspended plasmid at -20°C. The DNA is stable for at least one year from date of shipping when stored at -20°C.

RefSeq: [NM_053807.2](#)

RefSeq Size: 3057 bp

RefSeq ORF: 2514 bp

Locus ID: 116493

UniProt ID: [Q9JHZ4](#)

Cytogenetics: Xq12

MW: 96.1 kDa

Gene Summary: a neuronal rasGEF that may regulate neuronal ras signaling and contribute to the regulation of AMPA receptor distribution by NMDA receptor activity [RGD, Feb 2006]