

Product datasheet for **RR203157**

Scn1b (NM_017288) Rat Tagged ORF Clone

Product data:

Product Type: Expression Plasmids
Product Name: Scn1b (NM_017288) Rat Tagged ORF Clone
Tag: Myc-DDK
Symbol: Scn1b
Mammalian Cell Selection: Neomycin
Vector: pCMV6-Entry (PS100001)
E. coli Selection: Kanamycin (25 ug/mL)
ORF Nucleotide Sequence: >RR203157 representing NM_017288
Red=Cloning site Blue=ORF Green=Tags(s)

TTTTGTAATACGACTCACTATAGGGCGGCCGGAATTCGTCGACTGGATCCGGTACCGAGGAGATCTGCC
GCC**CGATCGCC**

ATGGGGACGCTGCTGGCTCTCGTGGTGGGCGGGTCTGGTATCCTCAGCCTGGGGGGCTGCGTGGAGG
TGGATTCTGAGACCGAGGCAGTGTATGGGATGACCTTCAAATCCTGTGTATCTCCTGTAAGCGTCGTAG
TGAGACCACCGCCGAGACCTTACGGAGTGGACCTCCGCCAGAAGGGCACAGAGGAATTTGTCAAGATC
CTACGCTATGAGAATGAGGTGCTGCAGCTGGAGGAAGATGAGCGCTTTGAGGGCCGTGTGGTGTGGAACG
GTAGTCGGGGACCAAGGACCTGCAGGACCTGTCCATCTCATCAACCAATGTCACCTACAACCACCTCTGG
CGACTACGAATGTCACGTCTACCGTCTCCTCTTTGATAAATTACGAGCACAACACCAGCGTCGTCGTAAG
AAGATCCACCTGGAGGTGGTGGACAAGGCCAACAGAGATATGGCATCCATCGTGTGAGAGATCATGATGT
ACGTGCTCATTGTGGTGTAAACCATATGGCTCGTGGCGGAGATGGTGTACTGCTACAAGAAGATTGCTGC
TGCCACGGAAGCTGCTGCACAAGAGAATGCCTCGGAATACCTGGCATTACTTCCGAGAGCAAAGAGAAC
TGTACAGGCGTCCAGGTGGCTGAATGTACAGGCGTCCAGGTGGCTGAA

ACGCGTACGCGGCCGCTCGAGCAGAACTCATCTCAGAAGAGGATCTGGCAGCAAATGATATCCTGGATT
ACAAGGATGACGACGATAAGGTTTAA

Protein Sequence: >RR203157 representing NM_017288
Red=Cloning site Green=Tags(s)

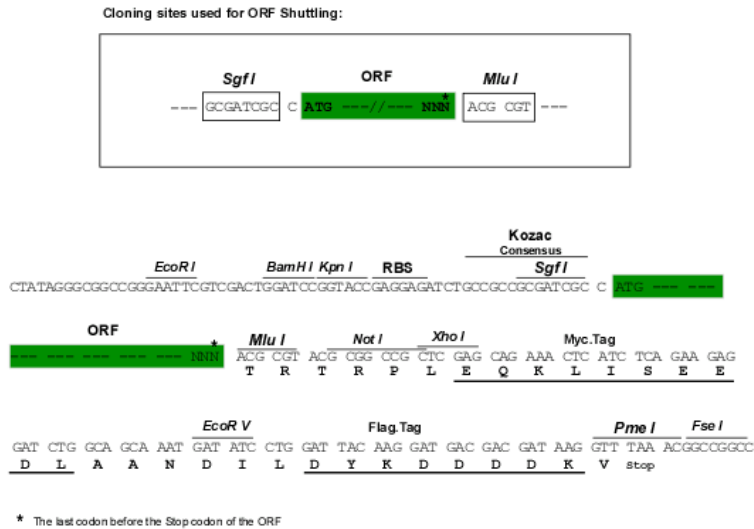
MGTLALVVGAVLVSSAWGGCVEVDSETEAVYGMTFKILCISCKRRSETAETFTEWTFRQKGTEEFVKI
LRYENEVLQLEEDERFEGRVVWNGSRGTDLQDLSIFITNVTYNHSGDYECHVYRLLFFDNYEHNTSVVK
KIHLEVDKANRDMASIVSEIMMYVLIVLTIWLVAEMVYCYKKIAAATEAAAQENASEYLAITSESKEN
CTGVQVAECTGVQVAE

TRTRPLEQKLISEEDLAANDILDYKDDDDKV



Restriction Sites: SgfI-MluI

Cloning Scheme:



ACCN: NM_017288

ORF Size: 654 bp

OTI Disclaimer: The molecular sequence of this clone aligns with the gene accession number as a point of reference only. However, individual transcript sequences of the same gene can differ through naturally occurring variations (e.g. polymorphisms), each with its own valid existence. This clone is substantially in agreement with the reference, but a complete review of all prevailing variants is recommended prior to use. [More info](#)

OTI Annotation: This clone was engineered to express the complete ORF with an expression tag. Expression varies depending on the nature of the gene.

Components: The ORF clone is ion-exchange column purified and shipped in a 2D barcoded Matrix tube containing 10ug of transfection-ready, dried plasmid DNA (reconstitute with 100 ul of water).

Reconstitution Method:

1. Centrifuge at 5,000xg for 5min.
2. Carefully open the tube and add 100ul of sterile water to dissolve the DNA.
3. Close the tube and incubate for 10 minutes at room temperature.
4. Briefly vortex the tube and then do a quick spin (less than 5000xg) to concentrate the liquid at the bottom.
5. Store the suspended plasmid at -20°C. The DNA is stable for at least one year from date of shipping when stored at -20°C.

RefSeq Size: 1520 bp

RefSeq ORF: 657 bp

Locus ID: 29686

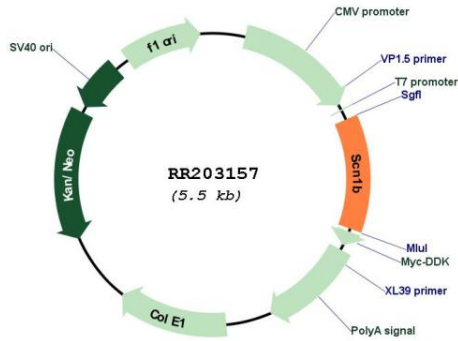
UniProt ID: [Q00954](#)

Cytogenetics: 1q21

MW: 24.7 kDa

Gene Summary: has voltage sensitive sodium channel activity when coexpressed with alpha subunits; plays a role in initiation and propagation of the action potential [RGD, Feb 2006]

Product images:



Circular map for RR203157