

Product datasheet for RR203156

Tgfb2 (NM_031131) Rat Tagged ORF Clone

Product data:

Product Type:	Expression Plasmids
Product Name:	Tgfb2 (NM_031131) Rat Tagged ORF Clone
Tag:	Myc-DDK
Symbol:	Tgfb2
Synonyms:	TGF-B2
Vector:	pCMV6-Entry (PS100001)
E. coli Selection:	Kanamycin (25 ug/mL)
Cell Selection:	Neomycin
ORF Nucleotide Sequence:	>RR203156 representing NM_031131 Red=Cloning site Blue=ORF Green=Tags(s)

TTTTGTAATACGACTCACTATAGGGCGCCGGGAATTCGTCGACTGGATCCGGTACCGAGGAGATCTGCC
GCCGCGATCGCC

ATGCACTACTGTGTGCTGAGAACCTTTTTGCTCCTGCATCTGGTCCCGGTGGCGCTCAGTCTGTCTACCT
GCAGCACCTCGACATGGACCAGTTTATGCGCAAGAGGATCGAGGCCATCCGCGGCAGATCCTGAGCAA
GCTGAAGCTCACCAGCCCCCGGAAGACTATCCGGAGCCGGATGAGGTCCCCCGGAGGTGATTTCCATC
TACAACAGTACCAGGGACTTACTGCAGGAGAAGGCAAGCCGGAGGGCAGCCGCCTGCGAGCGCAGCGAA
GCGACGAGGAGTACTACGCCAAGGAGGTTATAAAATCGACATGCCGTCCCACTTCCCCTCCGAAACTGT
CTGCCAGTTGTTACAACATCCTCTGGCTCAGTGGGCAGCTTTTGTCCATACAGTCCCAGGTGCTCTGT
GGGTACCTTGATGCCATCCCGCCCACTTCTACAGACCTACTTCAGAATCGTCCGCTTCGATGTCTCAA
CAATGGAGAAGAATGCTTCAAATCTGGTGAAGGCAGAGTTCAGGGTCTTTCGCTTGACAGAACCCCAAGGC
CAGAGTGGCTGAACAACGGATTGAACTGTATCAGATCCTTAAATCCAAAGACCTAACATCTCAACCCAG
CGCTACATTGATAGCAAGTTGTGAAAACAGAGCCGAGGGGAATGGCTCTCCTTCGACGTGACAGACG
CCGTGCACGAGTGGCTTACCACAAAGACAGAACCTGGGATTTAAAATAAGTTTACACTGCCCTGTCTG
TACCTTCATACCGTCTAATAATTACATCATCCAAATAAGAGCCAAGAGCTGGAGGCGAGATTCGCAGGT
ATCGATGGCACCTCCACATATGCCAGTGGTGATCAGAAAATATAAAGTCCACTAGGAAAAAAGCAGTG
GGAAGACCCCGCATCTCCTGCTAATGTTGTTGCCCTCTACAGACTGGAGTCCCAGCAGTCCAGCCGCG
ACGGAAGCGGGCTTTGGATGCCGCTATTGCTTTAGGAATGTGCAGGATAATTGCTGCCTTCGCCCTCTT
TACATTGATTTTAAAGAGGATCTTGGATGGAAATGGATCCATGAACCCAAAGGATACAATGCTAACTTCT
GTGCTGGGCATGCCCTTATCTGTGGAGTTCAGACACACAACACACCAAAGTCTCAGCCTGTACAACAC
CATAAACCCCGAAGCTTCTGCTTCCCCTGCTGTGTGCCAGGATCTGGAACCACTGACCATCCTCTAC
TACATTGGCAATACGCCAAGATCGAACAGCTTCCAACATGATCGTCAAGTCTTGTAATGCAGC

ACGCGTACGCGGCCGCTCGAGCAGAAACTCATCTCAGAAGAGGATCTGGCAGCAAATGATATCCTGGATT
ACAAGGATGACGACGATAAGGTTTAA



[View online »](#)

Protein Sequence: >RR203156 representing NM_031131
Red=Cloning site Green=Tags(s)

MHYCVLRTFLLLHLVPVALSLSTCSTLDMQDFMRKRIEAIRGQILSKLKLTSPPEDYPEPDEVPPEVISI
 YNSTRDLLQEASRRRAACERERSDEEYAKEVYKIDMPSHFPSETVCPVVTTSSGVSFCSIQSQVLC
 GYLDAIPPTFYRPFYFRIVRFDVSTMEKNASNLVKAEFRVFLQNPKARVAEQRIELYQILKSKDLTSPTQ
 RYIDSKVVKTRAEGEWLSFDVTDVAVHEWLHHKDRNLGFKISLHCPCTFIPSNNYIIPNKSQLEARFAG
 IDGTSTYASGDQKTIKSTRKSSGKTPHLLMLLPYSYRLESQQSSRRRKRALDAAYCFRNVQDNCCLRPL
 YIDFKRDLGWKWIHEPKGYANFCAGACPYLWSSDTQHTKVL SL YNTINPEASASPCCVSQDLEPLTILY
 YIGNTPKIEQLSNMIVKSCCKS

TRTRPLEQKLISEEDLAANDILDYKDDDDKV

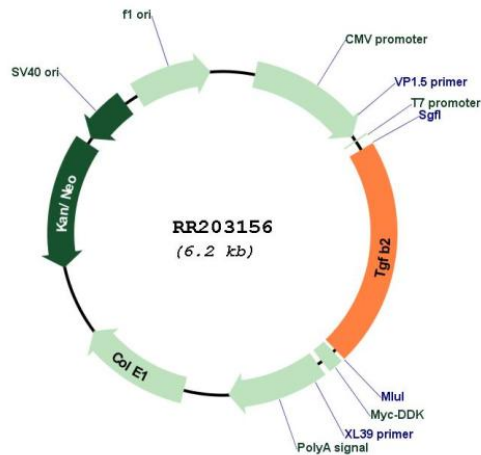
Restriction Sites:

SgfI-MluI

Cloning Scheme:



Plasmid Map:



ACCN:

NM_031131

ORF Size:	1326 bp
OTI Disclaimer:	The molecular sequence of this clone aligns with the gene accession number as a point of reference only. However, individual transcript sequences of the same gene can differ through naturally occurring variations (e.g. polymorphisms), each with its own valid existence. This clone is substantially in agreement with the reference, but a complete review of all prevailing variants is recommended prior to use. More info
OTI Annotation:	This clone was engineered to express the complete ORF with an expression tag. Expression varies depending on the nature of the gene.
Components:	The ORF clone is ion-exchange column purified and shipped in a 2D barcoded Matrix tube containing 10ug of transfection-ready, dried plasmid DNA (reconstitute with 100 ul of water).
Reconstitution Method:	<ol style="list-style-type: none">1. Centrifuge at 5,000xg for 5min.2. Carefully open the tube and add 100ul of sterile water to dissolve the DNA.3. Close the tube and incubate for 10 minutes at room temperature.4. Briefly vortex the tube and then do a quick spin (less than 5000xg) to concentrate the liquid at the bottom.5. Store the suspended plasmid at -20°C. The DNA is stable for at least one year from date of shipping when stored at -20°C.
RefSeq:	NM_031131.1 , NP_112393.1
RefSeq Size:	2880 bp
RefSeq ORF:	1329 bp
Locus ID:	81809
UniProt ID:	Q07257
Cytogenetics:	13q26
MW:	50.5 kDa
Gene Summary:	binds the transforming growth factor-beta receptor; plays a role in regulation of cell growth and proliferation; may be involved in mesenchymal-epithelial cell interactions during development [RGD, Feb 2006]