

Product datasheet for **RR203152**

Drd5 (NM_012768) Rat Tagged ORF Clone

Product data:

Product Type:	Expression Plasmids
Product Name:	Drd5 (NM_012768) Rat Tagged ORF Clone
Tag:	Myc-DDK
Symbol:	Drd5
Synonyms:	D1B
Mammalian Cell Selection:	Neomycin
Vector:	pCMV6-Entry (PS100001)
E. coli Selection:	Kanamycin (25 ug/mL)



[View online »](#)

ORF Nucleotide Sequence:

>RR203152 representing NM_012768
 Red=Cloning site Blue=ORF Green=Tags(s)

TTTTGTAATACGACTCACTATAGGGCGGCCGGGAATTCGTCGACTGGATCCGGTACCGAGGAGATCTGCC
 GCC**CGGATCGCC**

ATGCTGCCTCTGGGCGCAACCGCACGGCTCAACCGCAAGGCTGGGATTACAGAGGCAACTGGCTCAGG
 TGGACGCCCCAGCGGGCTCTGCAACCCCACTGGGACCCGCGCAGGTGGTACCGCAGGCCTCTGACTCT
 CCTAATCGTCTGGACCTTCTCGGGAACGTGCTAGTGTGTGCTGCCATCGTCCGACGCGCCATCTGCGC
 GCCAAGATGACCAACATCTTCATCGTATCCCTAGCTGTCTCAGACCTCTTCGTGGCATTGCTGGTATGC
 CCTGGAAGGCTGTGGCTGAGGTGGCTGGTACTGGCCCTTTGGGACATTCTGCGACATCTGGGTGGCCTT
 TGACATCATGTGCTCCACTGCCTCCATCCTGAATCTGTGTATCATCAGCGTGGACCGTTACTGGGCTATT
 TCCAGACCCTCCGCTACGAGCGCAAGATGACCCAGCGAGTAGCCCTGGTATGGTGGGCTGGCCTGGA
 CCTTGCCATCCTCATCTCCTTCATCCCGTCCAACCAATTGGCACAGAGACAAGGCAGGCTCCCAGGG
 CCAAGAGGGCCTGCTGTCCAATGGGACACCTGGGAGGAAGGCTGGGAGCTAGAAGGGAGGACGGAGAAC
 TGTGACTCCAGCCTGAACCGAACCTATGCCATCTCCTCGTCACTCATCAGCTTCTACATCCCGGTGGCCA
 TCATGATCGTGACCTATACGCGTATCTACCGCATTGCGCAGGTGCAGATCCGGCGGATCTCCTCCCTAGA
 GAGGGCAGCTGAGCATGCTCAGAGTTGCCGGAGTCGTGGAGCCTATGAACCTGACCCAGCCTGCGAGCG
 TCCATCAAGAAGGAGACCAAGGTCTTCAAACCCTGTCAATGATCATGGGGTCTTCGTGTGTTGCTGGT
 TGCCTTTCTTCATCCTGAACTGTATGGTTCTTTCTGCAGTAGTGGGGATGCCGAGGGCCCAAAGACTGG
 CTTCCCTGTGTGTCAGCGAGACCCTTCGACATATTCGCTGGTTTGGCTGGGCAACTCCTCTCTCAAT
 CCCATCATCTATGCCTTTAATGCAGACTCCCGAAGGTGTTTCCAGCTGCTGGGGTGCAGCCACTTCT
 GCTTCCGACCCAGTGCAGACGGTAAACATCAGTAATGAGCTCATCTCCTACAACCAAGACAGGTTCTT
 CCACAAGGAGATCGTACTGCCTATGTCCACATGATACCGAATGCAGTATCCTCCGGAGACAGGGAGGTG
 GGAGAGGAGGAGGAGGGGCTTTTCGATCACATGTCTCAAATCTCTCAACGACGCCAGACGGTGACC
 TGGCTGCTGAGTCTGTCTGGGAGCTTACTGTGAGGAAGAGGTTTCTTAGGCAAATCTCACCTCTCAC
 CCCCAATTGTTTCGATAAACTGCT

AG**CGGACCG**ACGCGTACGCGGCCGCTCGAGCAGAAACTCATCTCAGAAGAGGATCTGGCAGCAAATGATATCC
 TGGATTACAAGGATGACGACGATAAGGTTTAA

Protein Sequence:

>RR203152 representing NM_012768
 Red=Cloning site Green=Tags(s)

MLPPGRNRTAQPARLGLQRQLAQVDAPAGSATPLGPAQVVTAGLLTLLIVWTLGNVLCVAAIVRSRHLR
 AKMTNIFIVSLAVSDFVALLVMPWKAVA EVAGYWPFGTFCDI WVAFDIMCSTASILNLCIISVDRYWAI
 SRPFYERKMTQRVALVMVGLAWTLSILISFIPVQLNWHDRKAGSQGQEGLLSNGTPWEEGWELEGRTE
 CDSSLNRTYAISSSLISFYIPVAIMIVTYTRIYRIAQVQIRRISSLERAAEHAQSCRSGAYEPDPSLRA
 SIKKETKVFKTL SMIMGVVFCCWLPFFILNCMPFCSSGDAEGPKTGFPVSETTFDIFVWFGWANSSLN
 PIIYAFNADFRKVFQLLGCSHFCFRTPVQTVNISNELISYNQDTVHKEIATAYVHMIPNAVSSGDREV
 GEEEEEGPFDHMSQISPTTPDGLAAESVWELDC EEVSLGKISPLTPNCFDKTA

SGP**TRTRPLEQKLI SEEDLAANDILDYKDDDDK**V

Chromatograms:

https://cdn.origene.com/chromatograms/ja3024_h01.zip

Restriction Sites:

Sgfl-RsrII

Cloning Scheme:



ACCN: NM_012768

ORF Size: 1425 bp

OTI Disclaimer: Due to the inherent nature of this plasmid, standard methods to replicate additional amounts of DNA in E. coli are highly likely to result in mutations and/or rearrangements. Therefore, OriGene does not guarantee the capability to replicate this plasmid DNA. Additional amounts of DNA can be purchased from OriGene with batch-specific, full-sequence verification at a reduced cost. Please contact our customer care team at custsupport@origene.com or by calling 301.340.3188 option 3 for pricing and delivery.

The molecular sequence of this clone aligns with the gene accession number as a point of reference only. However, individual transcript sequences of the same gene can differ through naturally occurring variations (e.g. polymorphisms), each with its own valid existence. This clone is substantially in agreement with the reference, but a complete review of all prevailing variants is recommended prior to use. [More info](#)

OTI Annotation: This clone was engineered to express the complete ORF with an expression tag. Expression varies depending on the nature of the gene.

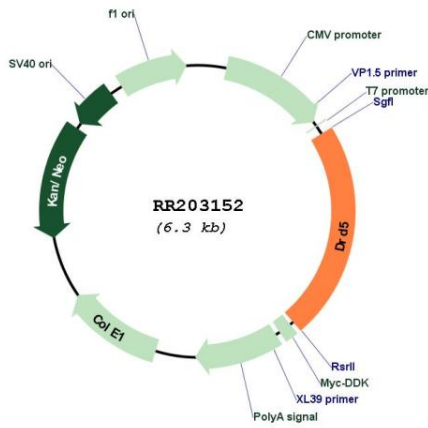
Components: The ORF clone is ion-exchange column purified and shipped in a 2D barcoded Matrix tube containing 10ug of transfection-ready, dried plasmid DNA (reconstitute with 100 ul of water).

- Reconstitution Method:**
1. Centrifuge at 5,000xg for 5min.
 2. Carefully open the tube and add 100ul of sterile water to dissolve the DNA.
 3. Close the tube and incubate for 10 minutes at room temperature.
 4. Briefly vortex the tube and then do a quick spin (less than 5000xg) to concentrate the liquid at the bottom.
 5. Store the suspended plasmid at -20°C. The DNA is stable for at least one year from date of shipping when stored at -20°C.

RefSeq: [NM_012768.1, NP_036900.1](#)
 RefSeq Size: 1428 bp
 RefSeq ORF: 1428 bp
 Locus ID: 25195
 UniProt ID: [P25115](#)
 Cytogenetics: 14q21
 MW: 52.8 kDa

Gene Summary: dopamine receptor; may play a role in stimulation of adenylyl cyclase, activation of phospholipase C, and phosphatidylinositol phosphate metabolism in the central nervous system [RGD, Feb 2006]

Product images:



Circular map for RR203152