

## Product datasheet for **RR203147**

### **Krt7 (NM\_001047870) Rat Tagged ORF Clone**

#### **Product data:**

Product Type:	Expression Plasmids
Product Name:	Krt7 (NM_001047870) Rat Tagged ORF Clone
Tag:	Myc-DDK
Symbol:	Krt7
Synonyms:	Krt2-7
Vector:	pCMV6-Entry (PS100001)
E. coli Selection:	Kanamycin (25 ug/mL)
Cell Selection:	Neomycin



[View online »](#)

**ORF Nucleotide Sequence:**

>RR203147 representing NM\_001047870  
 Red=Cloning site Blue=ORF Green=Tags(s)

TTTTGTAATACGACTCACTATAGGGCGGCCGGAATTCGTCGACTGGATCCGGTACCGAGGAGATCTGCC  
 GCC**CGCATCGCC**

ATGTCCATCCACTTCAGCTCTCGTCCACTGCTTACCCGGGCCGCGGGGCTCAGGTGCGCCTGAGCTCGG  
 GCCGCGCCAGCTTCGGCAGCAGGAGCCTCTATGGCCTGGGCTCATCAAGGCCTCGTGTGGCCGTGCGCTC  
 CGTTATGGGGGCCGGTGGCGCTGGCATCCGCGAGATCACCATCAATCAGAGCTTGCTGGCGCCGCTG  
 AGTGTGGACATCGATCCCACCATCCAGCAGGTGCGCCAGGAGGAGCGCGAGCAGATCAAGACCCTCAACA  
 ACAAATTCGCCTCCTTCATCGACAAGGTACGCTTCTGGAACAGCAGAACAAGATGCTGGAGACCAAGTG  
 GCGCTGCTGCAGGAACAGAAGTCAGCCAAGAGCAGCCAGCTTCCCCGAATCTTTGAGGCTCAGATTGCT  
 GGGCTGAGGCAGCAGCTCGAGACTGCAGCTGGATGGGGCCGCTGGAGGTGGAAGTGCAGCAATGC  
 AGGATGTGGTGAAGATTTCAAGAATAAGTATGAAGAGGAGATCAACCGACGCACGGCTGCTGAGAATGA  
 GTTTGTGTGCTGAAGAAGGATGTGGATGCCGCTACACGAACAAGGTGGAGTTGGAGGCCAAGGCGGAC  
 AGTCTGCAGGATGAGATCAACTTCTCAAGACCCTTACGAGACAGAGTTAGCAGAGCTGCAGTCCGAGA  
 TCTCAGACACATCTGTGGTGTGTCATGGACAACAGCCGCTCCCTGGACTTGGATGGTATCATTGCTGA  
 CGTCAAAGCCCAGTATGAGGAGATGGCCAAACCACAGCCGGGCAGAGGCTGAAGCTTGGTACCAGACCAAG  
 TTTGAGACTCCAGGCCAGGCTGGGAAGCACGGGATGACCTCCGCAACACCCGGAATGAGATTGCGG  
 AGATGAACCGCTCTATCCAGAGGCTGCAGGCAGAGATTGACACCTTGAAGAACCAGCGTCCCAAGTTAGA  
 GTCCAGCATCGCAGAGGCTGAGGAACAAGGGGAGCTGGCAATCAAGGATGCTCATGCTAAGCAGGGGGAG  
 CTGGAGGCTGCCCTGCAGAAGGCCAAGCAGGATGTGGCCCGCAACTTCGAGAGTACCAGGAGCTCCTGA  
 ACACCAAGCTGGCGTGGACATTGAGATCGCCACCTACCGCAAGCTGCTGGAGGGCAGGAGAGCCGGTT  
 GTCTGGAGACGGAATGGGACCTGTGAATATCTCTGTTGTGAATTCCTACTGGGGCAATGGTGGCAAGCTT  
 ATCTTCGAGGAACCATGGGAAGCAATGCTCTGAGCTTCAAGTGGGGACCCGAGCCCTCAGGGCCTATT  
 CCATCAAGACCACATCTACTACCCGAGGGGCACCCACAAT

**ACGCGT**ACGCGGCCGCTCGAGCAGAACTCATCTCAGAAGAGGATCTGGCAGCAAATGATATCCTGGATT  
 ACAAGGATGACGACGATAAGGTTTAA

**Protein Sequence:**

>RR203147 representing NM\_001047870  
 Red=Cloning site Green=Tags(s)

MSIHSSRSTAYPGRGAQVRLSSGRASFGSRSLYGLGSSRPRVAVRSAYGGPVGAGIREITINQSLLAPL  
 SVDIDPTIQQVRQEEREQIKTLNKFASFIDKVRFLEQQNKMLETKWALLQEQKSAKSSQLPRIFEQIA  
 GLRQQLLETLQLDGGRLLEVELRNMQDVVEDFNKYEEEEINRRTAAENEFVLLKKDVEDAAYTNKVELEAKAD  
 SLQDEINFLKTLHETELAELQSISDTSVVL SMDNSRSLDL DGI IADVKAQYEEMANHSRAEAEAWYQTK  
 FETLQAQAGKHGDDLNRNRNEIAEMNRSIQRLQAEIDTLKNQRAKLESSIAEAEQELAIKDAHAKQGE  
 LEAALQAKAQDVARQLREYQELLNKLALDIEIATYRKLEGEESRSLSGDGMGPVNI SVVNSTGGNGGKL  
 IFGGTMGSNALSFSGGPGALRAYSIKTTSTTRRGTHN

**TR**TRPLEQKLI SEEDLAANDILDYKDDDDKV

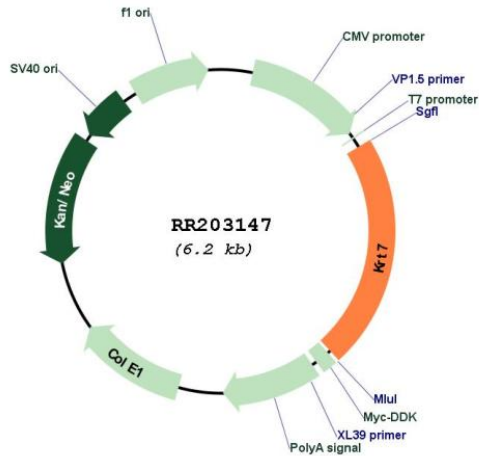
**Restriction Sites:**

Sgfl-MluI

**Cloning Scheme:**



**Plasmid Map:**



**ACCN:** NM\_001047870

**ORF Size:** 1371 bp

**OTI Disclaimer:** The molecular sequence of this clone aligns with the gene accession number as a point of reference only. However, individual transcript sequences of the same gene can differ through naturally occurring variations (e.g. polymorphisms), each with its own valid existence. This clone is substantially in agreement with the reference, but a complete review of all prevailing variants is recommended prior to use. [More info](#)

**OTI Annotation:** This clone was engineered to express the complete ORF with an expression tag. Expression varies depending on the nature of the gene.

**Components:** The ORF clone is ion-exchange column purified and shipped in a 2D barcoded Matrix tube containing 10ug of transfection-ready, dried plasmid DNA (reconstitute with 100 ul of water).

**Reconstitution Method:**

1. Centrifuge at 5,000xg for 5min.
2. Carefully open the tube and add 100ul of sterile water to dissolve the DNA.
3. Close the tube and incubate for 10 minutes at room temperature.
4. Briefly vortex the tube and then do a quick spin (less than 5000xg) to concentrate the liquid at the bottom.
5. Store the suspended plasmid at -20°C. The DNA is stable for at least one year from date of shipping when stored at -20°C.

**RefSeq:** [NM\\_001047870.1](#), [NP\\_001041335.1](#)

**RefSeq Size:** 1374 bp

**RefSeq ORF:** 1374 bp

**Locus ID:** 300242

**UniProt ID:** [Q6IG12](#)

**Cytogenetics:** 7q36

**MW:** 50.7 kDa

**Gene Summary:** Blocks interferon-dependent interphase and stimulates DNA synthesis in cells.  
[UniProtKB/Swiss-Prot Function]