

Product datasheet for **RR203111**

Nek9 (NM_001106747) Rat Tagged ORF Clone

Product data:

Product Type:	Expression Plasmids
Product Name:	Nek9 (NM_001106747) Rat Tagged ORF Clone
Tag:	Myc-DDK
Symbol:	Nek9
Vector:	pCMV6-Entry (PS100001)
E. coli Selection:	Kanamycin (25 ug/mL)
Cell Selection:	Neomycin



[View online »](#)

ORF Nucleotide Sequence:

>RR203111 representing NM_001106747
 Red=Cloning site Blue=ORF Green=Tags(s)

TTTTGTAATACGACTCACTATAGGGCGGCCGGAATTCGTCGACTGGATCCGGTACCGAGGAGATCTGCC
 GCC**CGCATCGCC**

ATGTCCGTGCTGGGCGAGTATGAGCGCACTGCGATTCCATCAACTCGGACTTCGGAAGCGAGTCCGGGG
 GTGGCGGGGACTCGGGCTCGGGGCCAGCGCTAGCCCGGGCCGCGAGCCGGCGGTGCGGGCGAGCAGGA
 GGAGCTGCACTACATCCCATCCCGCTCTGGGCCGCGCGCCTTTGGGAGGCCACGCTATACCGCCG
 ACCGAGGATGACTCACTGGTGGTGTGGAAGGAAGTTGATTTGACCCGACTTTCTGAGAAAGAGCGTCGTG
 ACGCCTTGAATGAGATTGTATTCTAGCGCTGCTGCAGCATGACAACATTATTGCCTACTACAACCACTT
 TATGGACAATACTACCCTGCTGATTGAGTTGGAGTATTGTAACGGAGGGAACCTCTATGACAAAATCCTT
 CGTCAGAAGGACAAGTTGTTCAAGAAGAGATGGTGGTGTGTACCTTTTTCAGATTGTTTCAGCAGTGA
 GCTGTATCCATAAAGCTGGAATCCTCCATAGAGATATAAAGACATTAATATTTTTCTGACCAAGGCAAA
 TCTGATAAAGCTTGAGACTATGGCCTAGCAAAGAACTTAATTCTGAGTACTCTATGGTGAAACACTT
 GTGGGCCTCCATATTACATGTCTCCAGAGCTCTGCCAAGGAGTAAAGTATAATTTCAAGTCTGATATCT
 GGGCAGTTGGCTGTGTCATTTTTGAACTGCTTACTCTGAAAAGAACATTTGATGTACAAAACCACTCAA
 CCTGTGTGTGAAGATTGTGCAGGATATCCGGGCCATGGAAGTCGACTCTAGTCAGTATTCTTTGGGGCTC
 ATCCAGTTGGTGCATGCATGCCTCGACCAGGATCCTGAGCGGAGACCCACTGCAGATGCCTTCTGGATC
 TCCCCCTTCTCAGGAAACGTAGGAGAGAGATGGAAGAAAAAGTCACTCTGCTTAATGCACCTACAAAAG
 ACCCAGGTCAAGCACTGTGACTGAAGCACCCATTGCTGTGGTAACATCTCGAACCAGTGAAGTCTATGTT
 TGGGGTGGTGGAAAATCCACACCTCAGAAATTGGATGTCATCAAGAGTGGCTGTAGTCTCGACAGGTGT
 GCGCAGGGAACACCCACTTTGCTGTGGTCACCGTGGAGAAGGAACATATACCTGGTGAACATGCAAGG
 GGGCACTAAACTTCATGGTCAGCTAGGACATGGAGACAAAAGCTTCTACCAGACGCAAAAGCATGTGGAG
 AAGTTGCAAGGAAAAGCTATCCACCAGGTGTCATGTGGTGTGACTTCACTGTTTGTGTGACAGATGAAG
 GTCAGCTCTATGCCTTTGGATCAGATTATTATGGCTGCATGGGAGTGGACAAGGTTTCTGGTCTGAAGT
 GCTTGAACCCATGCAGCTGAACCTTCTCCTCAGCAATCCAGTGGAGCAGGTCTCCTGTGGGGATAATCAT
 GTGGTAGTTCTGACACGAAACAAGGAAGTCTACTCTTGGGGCTGTGGTGAATATGGACGCTGGGTTTGG
 ATTCAGAAGAGGATTACTATACACCACAGAGGGTGGATGTTCCAAAGGCCTTAATCATTGTTGCGGTTCA
 ATGTGGCTGTGATGGGACCTTCTGCTCACTCAGTCAGGCAAAGTCTGGCCTGCGGACTCAACGAGTTC
 AACAACTGGGGCTGAATCAGTGCATGTCTGGGATCATCAACCATGAAGCATAACCAGAAAGTCCCTACA
 CGACCTCCTTTACCTTGCCAAACAGTTATCCTTTTACAAAATCCGTACCATTGCTCCAGGCAAGACTCA
 CACGGCTGCTATTGATGAGCGAGGCCGGTGTGCTGACTTTTGGCTGTAATAAGTGTGGGCAGCTGGGTGTT
 GGGAAATATAAGAAGCGCCTGGGAATCAACCTGTTGGGGGACCCCTTGGTGGGAAGCAAGTATCAGGG
 TCTCCTGTGGCGATGAGTTCACCATCGCTGCCACCGATGATAATCACATTTTTGCCTGGGGTAATGGTGG
 TAACGGCCCGCTGGCAATGACTCCACAGAGAGACCACATGGCTCTGATATCTGTACCTCCTGGCCTCGG
 CCTATTTTTGGATCTCTGCATCATGTCCAGACCTTTCTTGCCGTGGCTGGCACACCATTTCTATTGTTG
 AGAAAGTATTGAATCCAAGACCATCCGTTCTAACAGCAGTGGCCTATCCATCGGAACCTGGTTTCAGAG
 CTCAGCCAGGCGCCGCAATTGGTGGTGGCGGGGTGAAGAGGAAGATAGTCAGCAGAACTGAAACT
 CCAGATCCAAGTGGAGGTTTCCGAGGAACAATGGAAGCAGACCGTGAATGGAAGGTTTAAATCAGCCCA
 CAGAGGCTGTGGGAAACAGTTGTGGGGCTAGCAGCTCCTGCTCCTGGCTGGCTTCGGAAGGAGCTGGAAAA
 TGCTGAGTTATCCCATGCCTGACAGCCAACTCCCCTAAGTGCAGCATTTTACAATCTGAGAAGGAC
 ACTCTACCCTATGAAGAGCTGCAAGGACTCAAAGTCGCATCTGAAGTCCCTCCGGAACACCAGCCTGCAG
 TAGGAGCCTGGCCCCCGGCTGAATCCTGCAGTCCCGTGTGTTGGGAAAGCATTGACCTCTCCTGCCTG
 TGCATGCAGTCTGCAAGTGGAGTTGAGAGGCTGCAGGGCCTGGTGTAAAGTGTCTGGATGAGCAG
 CAGAAGCTCCAGCAAGAAAACCTCCAGATTGTTACTCAGCTCCAAAAGCTCAACAAGAGACTGGAAGGAG
 GCCAGCAGGTGGGATGCACTCCAGAGGAACCCAGACAGCAAAGGAAGACAGGAAATGGATCCAAAGCCT
 GACT

ACGCGTACGCGGCCGCTCGAGCAGAACTCATCTCAGAAGAGGATCTGGCAGCAAATGATATCCTGGATT
 ACAAGGATGACGACGATAAGGTTTAA

Protein Sequence: >RR203111 representing NM_001106747
 Red=Cloning site Green=Tags(s)

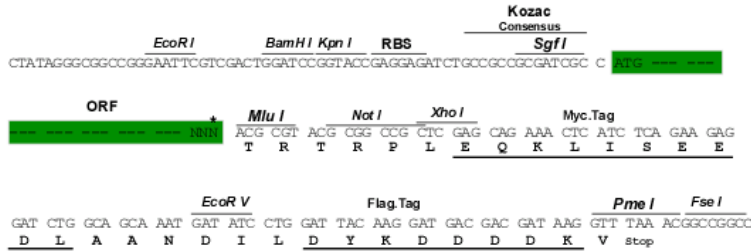
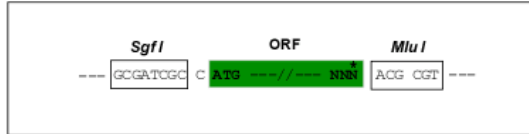
MSVLGEYERHCDSINDFGSESGGGGDSGSGPSASPGPRAGAAEQEELHYIPIRVLGRGAFGEATLYRR
 TEDDSL VVWKEVDLTRLSEKERRDALNEIVILALLQHDNIIAYYNHFMNDNTLLIELEYCNGGNLYDKIL
 RQKDKLFEEEMVWYLFQIVSAVSCIHKAGILHRDIKTLNIFLTKANLIKLDYGLAKLNSEYSMAETL
 VGTPYYMSPELCQGVKYNFKSDIWA VGC VIFELLTLKRTFDATNPLNLCVKIVQGI RAMEVDSSQYSLGL
 IQLVHACL DQDPERRPTADALLDLPLLRKRRREMEEKVTL LNAPTKRPRSSTVTEAPIAVVTSRTSEVYV
 WGGGKSTPQKLDVIKSGCSARQVCAGNTHFAVVTVEKELYTWVNMQGGTKLHGQLGHGDKASYRQPKHVE
 KLQGKA IHQVSCGDDFTVCVTDEGQLYAFGSDYYGCMGVDKVSGPEVLEPMQLNFFLSNPVEQVSCGDNH
 VVVLTRNKEVYSWGCGEYGRGLDSEEDYYTPQRVDVPKALIIIVAVQCGCDGTFLLTQSGKVLACGLNEF
 NKLGLNQCMGSIINHEAYHEVPYTTSTFLAKQLSFYKIRTIAPGKTHTAAIDERGRLLTFGCNCKGQLGV
 GNYKKRLGINLLGGPLGGKQVIRVSCGDEFTIAATDDNHIFAWGNGGNGRLAMTPTERPHGSDICTSWPR
 PIFGSLHHVPDLSCRGWHTILIVEKVLNSKTIRSNSSGLSIGTVVQSSSPGGRIGGGGEEEDSQQESET
 PDPSSGFRGTMEADRGMEGLISPTAVGNSCGASSSCPGWLRKELENAEFIPMPDSPTPLSAAFSQSEKD
 TLPYEELQGLKVA SEVPPEHQPAVGAWPPRLNPAVPCVGKAL TSPACACSA LQVEVERLQGLVLKCLDEQ
 QKLQENLQIVTQLQKLNKRLGEGQVGMHSRGTQTAKEDRKWIQSLT

TRTRPLEQKLISEEDLAANDILDYKDDDDKV

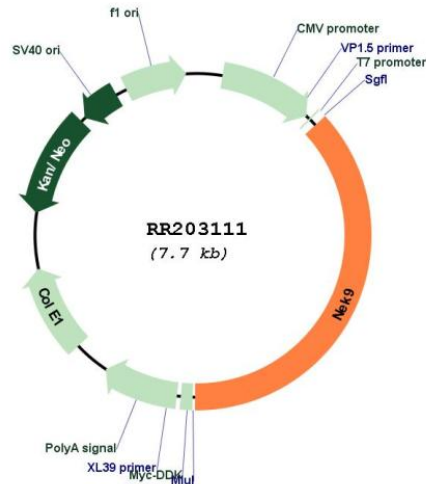
Restriction Sites: SgfI-MluI

Cloning Scheme:

Cloning sites used for ORF Shuttling:



* The last codon before the Stop codon of the ORF

Plasmid Map:


ACCN: NM_001106747

ORF Size: 2874 bp

OTI Disclaimer: The molecular sequence of this clone aligns with the gene accession number as a point of reference only. However, individual transcript sequences of the same gene can differ through naturally occurring variations (e.g. polymorphisms), each with its own valid existence. This clone is substantially in agreement with the reference, but a complete review of all prevailing variants is recommended prior to use. [More info](#)

OTI Annotation: This clone was engineered to express the complete ORF with an expression tag. Expression varies depending on the nature of the gene.

Components: The ORF clone is ion-exchange column purified and shipped in a 2D barcoded Matrix tube containing 10ug of transfection-ready, dried plasmid DNA (reconstitute with 100 ul of water).

Reconstitution Method:

1. Centrifuge at 5,000xg for 5min.
2. Carefully open the tube and add 100ul of sterile water to dissolve the DNA.
3. Close the tube and incubate for 10 minutes at room temperature.
4. Briefly vortex the tube and then do a quick spin (less than 5000xg) to concentrate the liquid at the bottom.
5. Store the suspended plasmid at -20°C. The DNA is stable for at least one year from date of shipping when stored at -20°C.

RefSeq: [NM_001106747.1](#), [NP_001100217.1](#)

RefSeq Size: 5822 bp

RefSeq ORF: 2877 bp

Locus ID: 299204

Cytogenetics: 6q31

MW: 104.9 kDa