

Product datasheet for **RR203103**

Prkx (NM_001033963) Rat Tagged ORF Clone

Product data:

Product Type: Expression Plasmids
Product Name: Prkx (NM_001033963) Rat Tagged ORF Clone
Tag: Myc-DDK
Symbol: Prkx
Vector: pCMV6-Entry (PS100001)
E. coli Selection: Kanamycin (25 ug/mL)
Cell Selection: Neomycin
ORF Nucleotide Sequence: >RR203103 representing NM_001033963
Red=Cloning site Blue=ORF Green=Tags(s)

TTTTGTAATACGACTCACTATAGGGCGGCCGGAATTCGTCGACTGGATCCGGTACCGAGGAGATCTGCC
GCC**CGATCGCC**

ATGGAGCCACCCGCTTGCCGAGGCGGCCGTAAGATCCTGCAGCCAGAGACCATGACCCCGTGAGCG
CAAAGATCTCAGCGCCCGCCGGATCCCCTACCCAGGACGTCGTCACAGAAAGAGGGGCACTCGTTACA
AGATTGGGACACCATAGCCACCGTGGGCACTGGAACCTTTGGCCGAGTAAACCTGGTGAAGGAGAAGACA
GGCAGGGCATACTGTGCCTTGAAGATTATGAGCATCCCAGATGTCATCCGCCTGAAGCAGGAACAACATG
TGCAAGATGAGAAAGCAGTCTGAAGGAAATAAACCCACCCCTTCCTCATTAAACTGCTTTGGACAGACCA
TGACAACCGCTTCTGTACATGCTGATGGAGTTTGTGCCTGGTGGTGGAGCTGTTACCTACCTGCCTAAT
CGTGGCCGCTTTTCTCAGTTGCTGCAATCTTCTATGCCACAGAGATTGTGTGCCATAGAATACCTGC
ACTCAAGGAAATCGTATACAGGGACCTGAAGCCTGAAAACATCCTTCTGGACAGGGAAGGACATATCAA
ACTCACTGACTTCGGCTTCGCCAAGAACTGGTGGATAGGACATGGACTCTGTGGGACACCGGAATAC
CTTGCCCCAGAAGTTATCCAGAGCAAAGGTCATGGAAGAGCTGTGGACTGGTGGCATTGGGCATCCTTA
TATTCGAGATGCTGTCTGGGTTTCCCCATTTTTCGATGACAACCCATTTGGGATTTACCAGAAAATCCT
TGCATGCAAAATAGATTTCCCCAGACAATTGGATTTACCTCTAAGGACCTCATCAAGAAGCTTCTGGTG
GTAGACAGGACCCGCGCCTGGGCAACATGAAGAATGGGGCAGAAGACATCAAGCGGCACCGGTGGTTCC
GAGGTGTGGAGTGGGAGTCCGTGCCACAGAGGAACTTAAGCCACCCATTGTGCCAAGTTATCCAGTGA
TGGTGACATCTCAACTTTGAGACTTATCCAGAGGGTGAGTTGGACAAGACTCCTTCTGTATCTGATGAA
GATCTGGAACATTCAAAAATTTT

ACGCGTACGCGGCGCCTCGAGCAGAACTCATCTCAGAAGAGGATCTGGCAGCAAATGATATCCTGGATT
ACAAGGATGACGACGATAAGGTTTAA



[View online »](#)

Protein Sequence: >RR203103 representing NM_001033963
 Red=Cloning site Green=Tags(s)

MEPPACAEAAVKDPAARDHDPVDAKISAPAADPLPRTSSQKEGHS LQDWDTIATVGTGTFGRVNLVKEK
 GRRYCALKIMSIPDVIRLKQEQHVQNEKAVLKEINHPFLIKLLWTDHNRFLYMLMEFVPGGELFTYLRN
 RGRFSSVAIFYATEIVCAIEYLHSKEIVYRDLKPENILLDREGHIKLTDFGFAKKLVDRTWLTCGTPEY
 LAPEVIQSKGHGRAVDWWALGILIFEMLSGFPPFFDDNPFGIYQKILACKIDFPRQLDFTSKDLIKLLV
 VDRTRRLGNMKNGAEDIKRHRWFRGVEWESVPQRKLKPPIVPKLSSDGDISNFETYPEGELDKTPSVSDE
 DLETFKNF

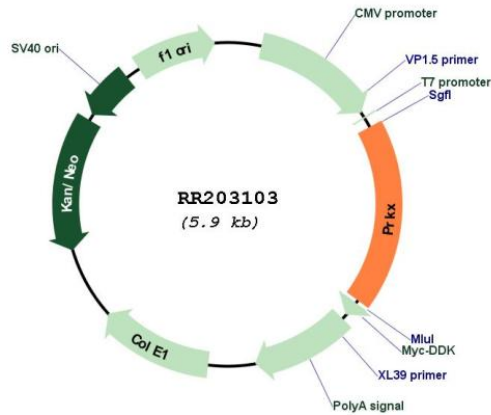
TRTRPLEQKLISEEDLAANDILDYKDDDDKV

Restriction Sites: SgfI-MluI

Cloning Scheme:



Plasmid Map:



ACCN: NM_001033963

ORF Size:	1074 bp
OTI Disclaimer:	The molecular sequence of this clone aligns with the gene accession number as a point of reference only. However, individual transcript sequences of the same gene can differ through naturally occurring variations (e.g. polymorphisms), each with its own valid existence. This clone is substantially in agreement with the reference, but a complete review of all prevailing variants is recommended prior to use. More info
OTI Annotation:	This clone was engineered to express the complete ORF with an expression tag. Expression varies depending on the nature of the gene.
Components:	The ORF clone is ion-exchange column purified and shipped in a 2D barcoded Matrix tube containing 10ug of transfection-ready, dried plasmid DNA (reconstitute with 100 ul of water).
Reconstitution Method:	<ol style="list-style-type: none">1. Centrifuge at 5,000xg for 5min.2. Carefully open the tube and add 100ul of sterile water to dissolve the DNA.3. Close the tube and incubate for 10 minutes at room temperature.4. Briefly vortex the tube and then do a quick spin (less than 5000xg) to concentrate the liquid at the bottom.5. Store the suspended plasmid at -20°C. The DNA is stable for at least one year from date of shipping when stored at -20°C.
RefSeq:	NM_001033963.1 , NP_001029135.1
RefSeq Size:	4078 bp
RefSeq ORF:	1077 bp
Locus ID:	501563
Cytogenetics:	Xq21
MW:	40.9 kDa