

Product datasheet for **RR203084**

Wt1 (NM_031534) Rat Tagged ORF Clone

Product data:

Product Type:	Expression Plasmids
Product Name:	Wt1 (NM_031534) Rat Tagged ORF Clone
Tag:	Myc-DDK
Symbol:	Wt1
Mammalian Cell Selection:	Neomycin
Vector:	pCMV6-Entry (PS100001)
E. coli Selection:	Kanamycin (25 ug/mL)



[View online »](#)

ORF Nucleotide Sequence:

>RR203084 representing NM_031534
 Red=Cloning site Blue=ORF Green=Tags(s)

TTTTGTAATACGACTCACTATAGGGCGGCCGGAATTCGTCGACTGGATCCGGTACCGAGGAGATCTGCC
 GCC**CGATCGCC**

ATGGGTTCCGACGTGCGGGACCTGAACGCGCTGCTGCCCGCGTGTCTCGCTGGCGGTGGAGGCGGT
 GTGGGCTCCCTGTGAGCGCGCGCGCAATGGGCGCGGTGCTGGACTTCGCGCCTCCGGGCGCCTCGGC
 TTACGGGTCACTGGGCGGTCCCGCGCTCCTCCCGCTCCGCCGCCACCTCCGCGCCACCCCACTCCTTC
 ATCAAACAGGAGCCAGCTGGGCGCGCGGAGCCGACGAGGAGCAGTGCCTGAGCGCCTTCACCTTGC
 ACTTCTCCGGCCAGTTCACCGGTACAGCCGGGCTGTGCTACGGACCTTCGGTCTCCCGGCCAG
 CCAGGCGTCATCCGGCCAGGCCAGGATGTTCCCAATGCGCCCTACCTGCCAGCTGCCTGGAGAGCCAG
 CCCTCCATCCGCAACCAAGGATACAGCACGGTCACTTTCGACGGGACCCAGTTATGGCCACACGCCCT
 CGCACCATGCAGCGCAGTCCCAATCATTCTTCAAACAGGAGACCCATGGCCAGCAGGGCTCGT
 GGGCGAGCAGCAGTACTCGGTGCCACCTCCAGTGTATGGCTGCCACCCCTACCGACAGTTGCACAGGC
 AGCCAGGCCCTGCTCCTGAGGACGCCCTACAGCAGTGACAATTTATACCAGATGACTCCAGCTTGAGT
 GCATGACCTGGAACCAGATGAACCTCGGAGCTACCTTGAAGGGAATGGCTGCTGGGAGCTCCAGCTCAGT
 GAAATGGACAGAAGGGCAGAGCAACCACGGCACAGGTTACGAGAGTGAGAACCACACAACCCCATCCTC
 TGTGGTGGCCAGTACAGAATACACCCACGGTGTCTCCGAGGCATTACAGGATGTGCGGCGCGTATCTG
 GAGTGGCCCAACTCTTGTCCGGTCAGCATCTGAAACCAGTGAGAAGCGTCTTTTATGTGTGCGTACCC
 AGGCTGCAATAAGAGATATTTAAGCTGTCCCACTTACAGATGCACAGCCGGAAGCACACTGGTGAGAAA
 CCATACCAGTGTGACTTCAAGGACTGCGAGAGAAGTTTTCTCGCTCAGACCAGCTCAAAGGCACCAAA
 GGAGACACACAGGTGTGAAACCATTCAGTGTAAAACCTGTGAGGAAAGTTTTCCGGTCCGACCACCT
 GAAGACCCACACCAGGACTCATACAGTAAAACAAGTAAAAGCCCTTCAGCTGTGCGGTGGCACAGTTGT
 CAGAAAAAGTTTGC GCGT CAGACGAATTAGTCCGCCATCACAACATGCACCAGAAAACATGACCAAAAC
 TCCAGCTGGCGCTT

ACGCGTACGCGGCCGCTCGAGCAGAACTCATCTCAGAAGAGGATCTGGCAGCAAATGATATCCTGGATT
 ACAAGGATGACGACGATAAGGTTTAA

Protein Sequence:

>RR203084 representing NM_031534
 Red=Cloning site Green=Tags(s)

MGSDVRDLNALLPAVSSLGGGGCGLPVSQAAQWAPVLDFAAPPASAYGSLGGPAPPPAPPPPPPHSF
 IKQEPSWGAEPHEEQCLSAFTLHFSGQFTGTAGACRYGPFPPPPSQASSGQARMFPNAPYLPSCLESQ
 PSIRNQYSTVTFDGAAPSYGHTPSHAAQFPNHSFKHEDPMGQQGSLGEQQYSVPPPVYGCHTPTDSCGT
 SQALLLRTPYSSDNLQMTSQLCMTWNQMNLGATLKGMAAGSSSSVKWTEGQSNHGTGYESENHTTPIIL
 CGAQYRIHTHGVRGIQDVRVRSVGVAPTLVRSASETSEKRPFMCAYPGCKRYFKLSHLQMHRSKHTGEK
 PYQCDFKDCERRFSRSDQLKRHRHTGKPFQCKTCQRKFSRSDHLKTHTRHTGKTSEKPFSCRWHSC
 QKKFARSDLVRRHNMHQRNMTKLQAL

TRTRPLEQKLISEEDLAANDILDYKDDDDKV

Restriction Sites:

Sgfl-Mlul

Cloning Scheme:


ACCN: NM_031534

ORF Size: 1344 bp

OTI Disclaimer: The molecular sequence of this clone aligns with the gene accession number as a point of reference only. However, individual transcript sequences of the same gene can differ through naturally occurring variations (e.g. polymorphisms), each with its own valid existence. This clone is substantially in agreement with the reference, but a complete review of all prevailing variants is recommended prior to use. [More info](#)

OTI Annotation: This clone was engineered to express the complete ORF with an expression tag. Expression varies depending on the nature of the gene.

Components: The ORF clone is ion-exchange column purified and shipped in a 2D barcoded Matrix tube containing 10ug of transfection-ready, dried plasmid DNA (reconstitute with 100 ul of water).

Reconstitution Method:

1. Centrifuge at 5,000xg for 5min.
2. Carefully open the tube and add 100ul of sterile water to dissolve the DNA.
3. Close the tube and incubate for 10 minutes at room temperature.
4. Briefly vortex the tube and then do a quick spin (less than 5000xg) to concentrate the liquid at the bottom.
5. Store the suspended plasmid at -20°C. The DNA is stable for at least one year from date of shipping when stored at -20°C.

RefSeq: [NM_031534.2](#), [NP_113722.2](#)

RefSeq Size: 2645 bp

RefSeq ORF: 1347 bp

Locus ID: 24883

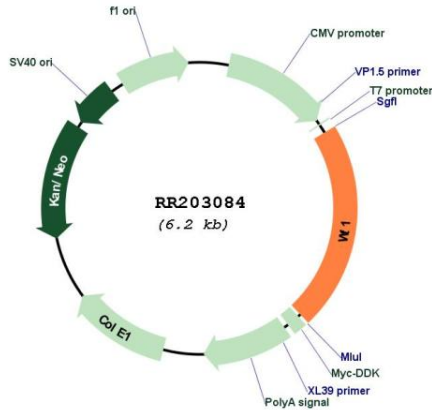
UniProt ID: [P49952](#)

Cytogenetics: 3q33

MW: 49.1 kDa

Gene Summary: This gene encodes a transcription factor that contains four zinc-finger motifs at the C-terminus and a proline/glutamine-rich DNA-binding domain at the N-terminus. It plays an essential role in the normal development of the urogenital system, and the human gene is mutated in a small subset of patients with Wilm's tumors. Authors of PMID:7926762 provide evidence that Wt1 mRNA undergoes RNA editing in human and rat, and that this process is tissue-restricted and developmentally regulated. [provided by RefSeq, Jul 2008]

Product images:



Circular map for RR203084