

Product datasheet for **RR203080**

Taar1 (NM_134328) Rat Tagged ORF Clone

Product data:

Product Type:	Expression Plasmids
Product Name:	Taar1 (NM_134328) Rat Tagged ORF Clone
Tag:	Myc-DDK
Symbol:	Taar1
Synonyms:	taR-1; Tar1; Trar1
Mammalian Cell Selection:	Neomycin
Vector:	pCMV6-Entry (PS100001)
E. coli Selection:	Kanamycin (25 ug/mL)
ORF Nucleotide Sequence:	>RR203080 representing NM_134328 Red=Cloning site Blue=ORF Green=Tags(s)

TTTTGTAATACGACTCACTATAGGGCGGCCGGAATTCGTCGACTGGATCCGGTACCGAGGAGATCTGCC
GCC**CGATCGCC**

ATGCATCTTTGCCACAATAGCGGAATATTTCCACACGAACAGCAACTGGTCAAGGGATGTCCGTGCTT
CACTGTACAGCTTAATATCACTCATAATTCTAACCCTCTGGTTGGCACTTAATAGTAATCATTTCGAT
ATCCCACTTCAAGCAACTTACACGCCACAAATTGGCTCCTTCATTCCATGGCCGTTGTCGACTTCTG
CTGGGCTGTCTGGTCATGCCCTACAGCATGGTGAACAGTTGAGCACTGCTGGTACTTTGGGAACTCT
TCTGCAAACCTTACACCAGCACTGATATCATGCTGAGCTCGGCATCCATTCTCCACCTAGCCTTCATTT
CATTGACCGCTACTATGCTGTGTGCGACCCTTTAAGATACAAAGCCAAGTCAATCTCGCCGCCATTTTT
GTGATGATCCTCATTAGCTGGAGCCTTCTGCTGTTTTGCAATTTGGGATGATCTTCTGGAGCTGAACT
TAGAAGGAGTTGAGGAGCAGTATCAACAATCAGGTCTTCTGCTGCGCGGCTGTTTTCCCTTCTTCAGTAA
AGTATCTGGGGTACTGGCATTATGACGTCTTTCTATATACCTGGATCTGTTATGTTATTTGTTACTAT
AGAATATATTTTAGCTAAAGGACAAGCGAGGTCAATTAATCGTGCAAATCTTCAAGTTGGATTGGAAG
GGGAAAGCAGAGCGCCACAAAGCAAGGAAACAAAAGCCGAAAACCTTAGGGATCATGGTGGCGTTTT
CCTCCTGTGCTGGTGCCCGTTCTTTTTCTGCATGGTCTGGACCCTTCTGGGCTATGTTATCCCAACC
ACTCTGAATGACACACTGAATTGGTTCGGGTACCTGAACCTCTGCCTTCAACCCGATGGTTATGCCTTT
TCTATCCCTGGTTCAGAAGAGCGTTGAAGATGGTCTCTTCGGTAAAATTTTCAAAAAGATTTCATCTAG
GTCTAAGTTATTTTTG

ACGCGTACGCGGCCGCTCGAGCAGAACTCATCTCAGAAGAGGATCTGGCAGCAAATGATATCCTGGATT
ACAAGGATGACGACGATAAGGTTTAA



[View online »](#)

Protein Sequence: >RR203080 representing NM_134328
 Red=Cloning site Green=Tags(s)

MHLCHNSANISHTNSNWSRDVRSALYSLISLIILTTLVGNLIVIIISISHFKQLHTPTNLLHSMVVDL
 LGCLVMPYSMVRTVEHCWYFGELFCKLHTSTDIMLSSASILHLAFISIDRYAVCDPLRYKAKINLAAIF
 VMILISWSLPAVFAFGMIFLELNLEGVEEQYHNQVFLRGCFPFVSKVSGVLAFTMSFYIPGSVMFLFVYY
 RIYFIAKQARSINRANLQVGLGESRAPQSKETKAAKTLGIMGVFLLCWCPPFFCMVLDPFLGVYIPP
 TLNDTLNWFGYLNSAFNPMVYAFFYPWFRRALKMVLFGKIFQKSSRSKLFLL

TRTRPLEQKLISEEDLAANDILDYKDDDDKV

Chromatograms: https://cdn.origene.com/chromatograms/ja2259_b06.zip

Restriction Sites: SgfI-MluI

Cloning Scheme:

Cloning sites used for ORF Shuttling:



* The last codon before the Stop codon of the ORF

ACCN: NM_134328

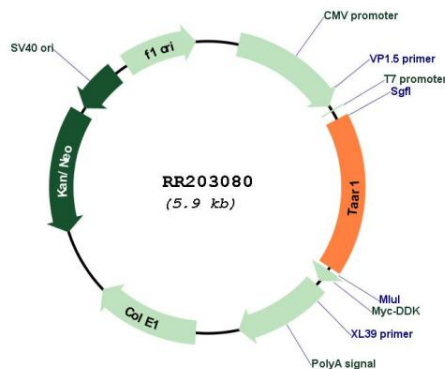
ORF Size: 996 bp

OTI Disclaimer: Due to the inherent nature of this plasmid, standard methods to replicate additional amounts of DNA in E. coli are highly likely to result in mutations and/or rearrangements. Therefore, OriGene does not guarantee the capability to replicate this plasmid DNA. Additional amounts of DNA can be purchased from OriGene with batch-specific, full-sequence verification at a reduced cost. Please contact our customer care team at custsupport@origene.com or by calling 301.340.3188 option 3 for pricing and delivery.

The molecular sequence of this clone aligns with the gene accession number as a point of reference only. However, individual transcript sequences of the same gene can differ through naturally occurring variations (e.g. polymorphisms), each with its own valid existence. This clone is substantially in agreement with the reference, but a complete review of all prevailing variants is recommended prior to use. [More info](#)

OTI Annotation:	This clone was engineered to express the complete ORF with an expression tag. Expression varies depending on the nature of the gene.
Components:	The ORF clone is ion-exchange column purified and shipped in a 2D barcoded Matrix tube containing 10ug of transfection-ready, dried plasmid DNA (reconstitute with 100 ul of water).
Reconstitution Method:	<ol style="list-style-type: none"> 1. Centrifuge at 5,000xg for 5min. 2. Carefully open the tube and add 100ul of sterile water to dissolve the DNA. 3. Close the tube and incubate for 10 minutes at room temperature. 4. Briefly vortex the tube and then do a quick spin (less than 5000xg) to concentrate the liquid at the bottom. 5. Store the suspended plasmid at -20°C. The DNA is stable for at least one year from date of shipping when stored at -20°C.
RefSeq:	NM_134328.1 , NP_599155.1
RefSeq Size:	999 bp
RefSeq ORF:	999 bp
Locus ID:	113914
UniProt ID:	Q923Y9
Cytogenetics:	1p12
MW:	38.5 kDa
Gene Summary:	G-protein coupled receptor that induces cAMP production in response to para-tyramine and other trace amines; also acts as a receptor for catecholamine metabolites and amphetamines [RGD, Feb 2006]

Product images:



Circular map for RR203080