

## Product datasheet for **RR203068**

### **Tbx3 (NM\_181638) Rat Tagged ORF Clone**

#### **Product data:**

Product Type:	Expression Plasmids
Product Name:	Tbx3 (NM_181638) Rat Tagged ORF Clone
Tag:	Myc-DDK
Symbol:	Tbx3
Mammalian Cell Selection:	Neomycin
Vector:	pCMV6-Entry (PS100001)
E. coli Selection:	Kanamycin (25 ug/mL)



[View online »](#)

**ORF Nucleotide Sequence:**

>RR203068 representing NM\_181638  
 Red=Cloning site Blue=ORF Green=Tags(s)

TTTTGTAATACGACTCACTATAGGGCGGCCGGAATTCGTCGACTGGATCCGGTACCGAGGAGATCTGCC  
 GCC**CGGATCGCC**

ATGAGCCTCTCCATGAGAGATCCGGTTATCCCTGGGACAAGCATGGCCTATCATCCGTTCTACCTCACC  
 GGGCGCCGGACTTCGCCATGAGCGCGGTGCTGGGCCACCAGCCGCTTTCTTCCCGCGCTAACGCTGCC  
 TCCCAACGGCGCCGCGCGCTCTCGCTGCCCGGAGCCCTGGCCAAACCCATCATGGATCAGTTAGTGGGG  
 GCTGCTGAGACCGGCATCCCTTTCTCATCCCTGGGACCCAGGCACATCTGAGGCCTCTGAAGACCATGG  
 AACCCGAAGAAGACGTAGAAGACGACCCCAAGGTGCACCTGGAGGCCAAGGAACTTTGGGACCAGTTTCA  
 CAAGCGGGGTACAGAGATGGTCATTACGAAGTCAGGAAGGCGAATGTTCCCTCCATTTAAAGTGAGGTGC  
 TCTGGGCTGGATAAAAAGCCAAGTATATTTTATTGATGGACATTATAGCTGCTGATGACTGTGATATA  
 AGTTTACAATTCTCGGTGGATGGTGGCCGTAAGGCAGACCCCGAAATGCCAAAAGAATGTACATCCA  
 CCCGGACAGCCCGCTACGGGGAGCAATGGATGTCAAAGTCGTCACCTTCCACAACTGAACTCACC  
 AACACATTTTCGGATAAACACGGATTTACTTTGGCCTTCCAAGCGATCACGCAACGTGGCAGGGGAATT  
 ATAGTTTTGGGACCCAGACTATACTAACTCCATGCACAAGTACCAGCCGCGTTCCACATCGTCAGAGC  
 CAACGACATTCTGAAACTGCCTTACAGTACCTTCCGCACATACCTGTTCCCGAAACAGAATTCATCGCC  
 GTGACTGCCTATCAGAATGACAAGATAACCCAGTTAAAAATAGACAACAATCCTTTTGGCAAAGGTTTTT  
 GAGATACTGGCAATGGCAGGAGAGAGAAAAGAAAGCAGCTCACTCTGCAGTCCATGAGGGTGTGATGA  
 GAGGCACAAGAAGGAGACCGGAATTCTGATGAGTCTCCAGTGAGCAGGCGCCTTCAACTGCTTTGCC  
 CAGGCCTCCTCTCCGCTGTGTCCACCGTGGGGACCTCCAACCTCAAAGATCTGTGTCCAGCGAAGCCG  
 AGAGTGACGCGGAGGCTGAAAGCAAGGAGGAGCATGGCCCCGAGGCCTGCGACACGGCCAAAGATTTCCAC  
 CACCACAGCGGAGGAGCCGGGCCGACAAAGGCAAGTCCAGCCACCAGGGCGCAGCTGTTCCCGCGGAG  
 CCCAGCCGGGCCGAGACACTGCGCGTCTGGACAAGGCATCGCCAGACTCGCGCCACAGCCCGGCCACCA  
 TCTCGTCTAGCACCCGAGTTCGGGAGCGGATGAGCACAGGAGCCCGGACGCGAGGGTCCGGTGTGCGC  
 TAAGGTGGATGAGGCTCGAGCGCTGCCGGCAAGGACGCCTTTGCTCCGCTGTGGTGCAGACAGACGCC  
 ACCGCGCATCTGACGCAGGGGCCCTCCCGGGCTTGGGTTTCCGCCCGGGCCTTGTGGCCAGCAGTTCT  
 TCAACGGGCACCCTCTTCTGCACCCGGGCCAGTTTGGCATGGGCGGCCTTCTCCAGCATGGCTGC  
 AGGCATGGGGCCCTGCTGGCCACAGTATCCGGGGCATCCACCGCGTCTCAGGCCTCGATTCCACAGCC  
 ATGGCCTCGGCTGCTGCAGCTCAGGGACTGTCCGGGGCGTCAGCTGCCACCCTGCCCTTCCACCTCCAAC  
 AACACGTTCTGGCCTCCAGGGTTTGGCCATGTGCGCTTTTGGGAGCCTGTTTCTTACCCTACACATA  
 CATGGCTGCAGCTGCTGCGGCCTCTCCCGGGCCGCTCCAGCTCCGTGCACCGCCACCCGTTCTCAAT  
 TTGAACAGCATGCGCCCCAGGCTGCGTTACAGCCCGTATTCCATCCCCGTCCCGGTGCCTGATAGCAGCA  
 GCTTGCTGGCCACTGCGTTACCGTCCATGGCTTCCGCTGCGGGGCCCTAGACGGCAAATCGGGGCTCT  
 GGCAGCCAGCCAGCCTCGGTGGCTGTGGACTCCGGGTGCGAAGTGAATAGCCGCTCATCCACGCTGTCC  
 TCCGGCTCAGTGTCTTGTACCCAACTCTGCTCCGAGAAGGAGGCGGCTACCAGCGAAGTGCAGAGCA  
 TCCAGCGACTGGTCAGTGGCTTGAAGCCAAGCCAGACAGGTCTGCAGCGGGTCCCT

**ACGCGT**ACGCGGCGCTCGAGCAGAACTCATCTCAGAAGAGGATCTGGCAGCAAATGATATCCTGGATT  
 ACAAGGATGACGACGATAAGGTTTAA



**Reconstitution Method:**

1. Centrifuge at 5,000xg for 5min.
2. Carefully open the tube and add 100ul of sterile water to dissolve the DNA.
3. Close the tube and incubate for 10 minutes at room temperature.
4. Briefly vortex the tube and then do a quick spin (less than 5000xg) to concentrate the liquid at the bottom.
5. Store the suspended plasmid at -20°C. The DNA is stable for at least one year from date of shipping when stored at -20°C.

**RefSeq:** [NM\\_181638.1](#), [NP\\_853669.1](#)

**RefSeq Size:** 2232 bp

**RefSeq ORF:** 2232 bp

**Locus ID:** 353305

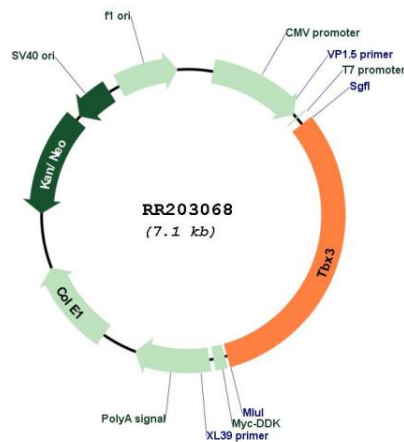
**UniProt ID:** [Q7TST9](#)

**Cytogenetics:** 12q16

**MW:** 79.3 kDa

**Gene Summary:** human homolog acts as a transcriptional repressor and plays a role in the development of several organ systems [RGD, Feb 2006]

### Product images:



Circular map for RR203068