

Product datasheet for **RR203064**

Grb7 (NM_053403) Rat Tagged ORF Clone

Product data:

Product Type:	Expression Plasmids
Product Name:	Grb7 (NM_053403) Rat Tagged ORF Clone
Tag:	Myc-DDK
Symbol:	Grb7
Synonyms:	MGC93307
Vector:	pCMV6-Entry (PS100001)
E. coli Selection:	Kanamycin (25 ug/mL)
Cell Selection:	Neomycin



[View online »](#)

ORF Nucleotide Sequence:

>RR203064 representing NM_053403
 Red=Cloning site Blue=ORF Green=Tags(s)

TTTTGTAATACGACTCACTATAGGGCGGCCGGAATTCGTCGACTGGATCCGGTACCGAGGAGATCTGCC
 GCC**GCGATCGCC**

ATGGAAGTGGATCTGAGCCCGTCTCATCTCAGCAGCTCCCCAGAAGATGTGTGCCAACTCTGGGACCC
 CTCCCAGACTCCTCCGCCCCCGGATAACCTCCGCCCGCGATGTGAAGCGGTCTCAGCCTTTGCCCAT
 CCCAAGTAGCAGGAACTTCGAGAAGAGGAGTTTCAGGCAACCTCTCTACCCTCCATCCCCAACCCCTTC
 CCCGAGCTCTGCAGCCACCTTCACAGAAACCCATTCTTGGTGGTTCTCCGGTGTAGGGGGTTGCTTC
 CTCGAGACTCCAGCCGCTCTGTGTGGTGAAGGTGTACAGTGAAGATGGAGCCTGCCGGTCTGTGGAAGT
 GGCGGCAGGTGCGACGGCTCGCCATGTGTGTGAGATGCTGGTGCAGCGAGCTCACGCCCTGAGCGATGAG
 AACTGGGGCTGGTGGAGTGCACCCCTATTTGGCTCTGGAGCGGGTTGGAGGACCATGAGTCTGTGG
 TAGAAGTGCAGGAGCCCTGGCCTGTGGTGGAGACAGCCGTTTCATCTCCGTA AAAACTTCGCCAAGTA
 TGAAGTCTCAAGAGCCCTCCGCACACCCTGTTCCAGAAAAGATGGTTCCAGCTGTCTGGATACACCA
 ACAGGCATATCCCATGAAGACCTCATCCAGAATTCTGAATGCTGGCAGCTTCCCTGAGATCCAGGGCT
 TCTGCAGCTTCGGGGATCAGGCCGGGGTTCAGGTCGAAAAGCTTTGAAAACGATTCTTCTGCTTCTCGC
 TCGGTCTGGCCTCTATTACTCGACCAAGGGCACCTCTAAGGACCCGAGACACCTACAGTACGTGGCAGAT
 ATAAATGAGTCCAATGTGTATGTGGTGACCCAGGGCCGAAGCTGTATGGGATACCCACCGACTTCGGCT
 TTTGTGTCAAGCCCAACAAGCTTCGAAATGGCCACAAGGGGCTCCACATCTTCTGCAGCGAGGATGAGCA
 GAGTCGGACTTGTGGCTGTCCGCCTCCGGCTTTCAGTACGGGTACAGCTATATAAGAATTATCAG
 CAGGCCAGTCTCGTACCTGCGCTTATCGTATTTGGGTCTCCACCCTTGAGGAGTGTCTCAGATAATA
 CCTGGTGGCCATGGACTTCTCTGGCCATGCTGGCGTGTCAATTGAGAACCCCAAGAGCTCTGAGTGC
 TGCCACGGAGGAAGCCAGGCCCTGGAGGAAGAAGACAAACCACCGTCTCAGCCTGCCACCCCGTCTCC
 GGCTGAGCCTCAGTGCAGCTATCCATCGACCCAGCCCTGGTTTCATGGACGAATCTCCCGGGAGGAGA
 GCCAGCGGCTAATTGGACAGCAGGGCCTGGTGGATGGTGTATTCTGGTCCGGGAGAGCCAGCGGAACCC
 ACAGGGCTTCGTTCTGTCTGTGCCATCTGCAGAAAGTCAAACATTATCTCATCTTGCCAAGCGAAGAT
 GAAGGCTGCCTTACTTACAGATGGATGACGGCCAGCCGTTTCACAGACCTGCTGCAGCTGGTGGAAAT
 TCCACCAGCTGAACCGAGGCATCTGCCCTGCTTGTGCTGCGCCACTGCTGTGCCCGTGTGGCCCTC

ACGCGTACGCGGCCGCTCGAGCAGAACTCATCTCAGAAGAGGATCTGGCAGCAAATGATATCTGGATT
 ACAAGGATGACGACGATAAGGTTTAA

Protein Sequence:

>RR203064 representing NM_053403
 Red=Cloning site Green=Tags(s)

MELDLSPSHLSSSPEDVCPTPGTPPETPPPPDNPPPGDVKRSQPLIPSSRKLREEEFQATSLPSIPNPF
 PELCSPPSQKPIILGGSSGARGLLPRDSSRLCVVKVYSEDGACRSVEVAAGATARHVCEMLVQRAHALSDE
 NWGLVECHPYLALERGLEDHESVVEVQEAWPVGGDSRFIFRKNFAKYELFKSPPHTLFPEKMWSSCLDTP
 TGISHEDLIQNFLNAGSFPEIQGFLQLRSGRGSGRKLWKRFFCFLLRRSGLYYSTKGTSKDPRHLQYVAD
 INESNVYVVTQGRKLYGIPTDFGFCVKNKLRNGHKGLHIFCSEDEQSRTCWLSAFRLFYKYGVLKKNYQ
 QAQSRHLRLSYLGSPLRSVSDNTLVAMDFSGHAGRVIENPQEALSAATEEAQAWRKKTNHRLSLPTPCS
 GLSLSAAIHRTQPWFHGRISREESQRLIGQQGLVDGVFLVRESQRNPQGFVLSLCHLQKVKHYLILPSED
 EGCLYFSMDDGQTRFTDLLQLVEFHQLNRGILPCLLRHCCARVAL

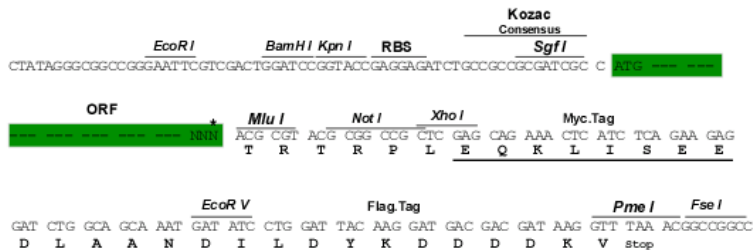
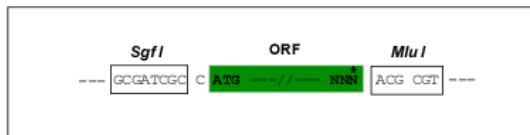
TRTRPLEQKLISEEDLAANDILDYKDDDDKV

Restriction Sites:

Sgfl-MluI

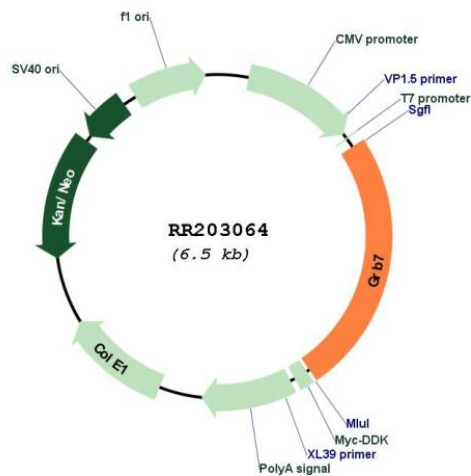
Cloning Scheme:

Cloning sites used for ORF Shuttling:



* The last codon before the Stop codon of the ORF

Plasmid Map:



ACCN:	NM_053403
ORF Size:	1605 bp
OTI Disclaimer:	The molecular sequence of this clone aligns with the gene accession number as a point of reference only. However, individual transcript sequences of the same gene can differ through naturally occurring variations (e.g. polymorphisms), each with its own valid existence. This clone is substantially in agreement with the reference, but a complete review of all prevailing variants is recommended prior to use. More info
OTI Annotation:	This clone was engineered to express the complete ORF with an expression tag. Expression varies depending on the nature of the gene.
Components:	The ORF clone is ion-exchange column purified and shipped in a 2D barcoded Matrix tube containing 10ug of transfection-ready, dried plasmid DNA (reconstitute with 100 ul of water).
Reconstitution Method:	<ol style="list-style-type: none">1. Centrifuge at 5,000xg for 5min.2. Carefully open the tube and add 100ul of sterile water to dissolve the DNA.3. Close the tube and incubate for 10 minutes at room temperature.4. Briefly vortex the tube and then do a quick spin (less than 5000xg) to concentrate the liquid at the bottom.5. Store the suspended plasmid at -20°C. The DNA is stable for at least one year from date of shipping when stored at -20°C.
RefSeq:	NM_053403.2 , NP_445855.1
RefSeq Size:	2445 bp
RefSeq ORF:	1608 bp
Locus ID:	84427
UniProt ID:	Q9QZC5
Cytogenetics:	10q31
MW:	59.9 kDa
Gene Summary:	a molecular adapter that binds the insulin receptors [RGD, Feb 2006]