

Product datasheet for **RR203062**

Sirt3 (NM_001106313) Rat Tagged ORF Clone

Product data:

Product Type:	Expression Plasmids
Product Name:	Sirt3 (NM_001106313) Rat Tagged ORF Clone
Tag:	Myc-DDK
Symbol:	Sirt3
Mammalian Cell Selection:	Neomycin
Vector:	pCMV6-Entry (PS100001)
E. coli Selection:	Kanamycin (25 ug/mL)
ORF Nucleotide Sequence:	>RR203062 representing NM_001106313 Red=Cloning site Blue=ORF Green=Tags(s)

TTTTGTAATACGACTCACTATAGGGCGGCCGGGAATTCGTCGACTGGATCCGGTACCGAGGAGATCTGCC
GCC**CGATCGCC**

ATGGTGGGGGCTGGCATCAGCACACCCAGTGGTATCCCAGACTTCAGATCCCCAGGGAGTGGCCTCTACA
GCAACCTTCAGCAGTATGACATCCCGTACCCTGAGGCCATCTTTGAACTAGGCTTCTTTTTTCAACCC
CAAGCCCTTTTTCAGTTGGCCAAGGAGCTGTACCCTGGGCACTACAGGCCCAATGTCGCTCACTACTTC
CTTCGGCTGCTTCAGACAAGGAGCTGCTTCTGCGGCTCTACACACAGAACATCGACGGGCTTGAGAGAG
CATCTGGTATCCCTGCCTCAAAGCTGGTTGAAGCTCATGGTCCTTTGTATCAGCTACGTGCACGGTCTG
TCGAAGGTCCTTCCAGGGGAAGACATACGGGCTGACGTGATGGCAGACAGGGTGCCCGCTGCCCTGTC
TGTAAGGCTTGTGAAACCTGACATTGTGTTCTTTGGGAGCAGCTGCCAGCAAGGTTCTTACTACATG
TGGCTGATTTGCTTGGCAGATCTGCTACTATTCTTGGGACCTCCCTGGAGGTGGAGCCTTTGCCAG
CTTGTCTGAATCGGTACAGAAATCAGTGCCCGACTGCTCATCAATCGAGACTTGGTGGGGTCTTTGCT
CTGAGTCTCGAAGGAAAGATGTGGTCCAGCTAGGGATGTAGTCCAGGGTGTGAAAGGCTGGTGGACC
TCCTGGGTGGACACAAGAGCTGCAGGATCTCATCCAGCGGAAAATGAAAAGCTGGATGGACAGGACGG
AA

ACGCGTACGCGGCCGCTCGAGCAGAAACTCATCTCAGAAGAGGATCTGGCAGCAAATGATATCCTGGATT
ACAAGGATGACGACGATAAGGTTTAA



[View online »](#)

Protein Sequence: >RR203062 representing NM_001106313
 Red=Cloning site Green=Tags(s)

MVGAGISTPSGIPDFRSPGSLYSNLQQYDIPYPEAIFELGFFFHNPFPFFTLAKELYPGHYRPNVAHYF
 LRLLDKELLLRQIDGLERASGIPASKLVEAHGSFVSATCTVCRSFPGEDIRADVMADRVPRCPV
 CTGVVVPDIVFFGEQLPARFLLHVADFALADLLILGTSLSEVPFASLSESVQKSVPRLLINRDLVGSFA
 LSPRRKDVVQLGDVVQGVVERLDLLGWTQELQDLIQRENGKLDGQDG

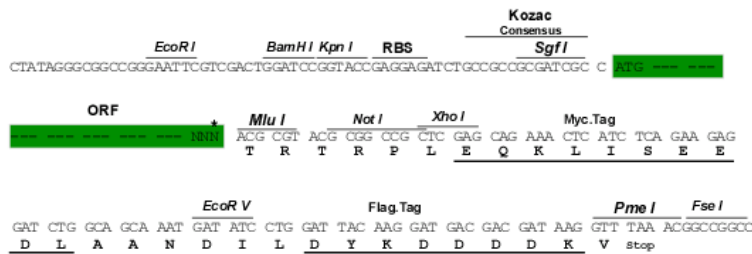
TRTRPLEQKLISEEDLAANDILDYKDDDDKV

Chromatograms: https://cdn.origene.com/chromatograms/ja1599_h07.zip

Restriction Sites: SgfI-MluI

Cloning Scheme:

Cloning sites used for ORF Shuttling:



* The last codon before the Stop codon of the ORF

ACCN: NM_001106313

ORF Size: 771 bp

OTI Disclaimer: The molecular sequence of this clone aligns with the gene accession number as a point of reference only. However, individual transcript sequences of the same gene can differ through naturally occurring variations (e.g. polymorphisms), each with its own valid existence. This clone is substantially in agreement with the reference, but a complete review of all prevailing variants is recommended prior to use. [More info](#)

OTI Annotation: This clone was engineered to express the complete ORF with an expression tag. Expression varies depending on the nature of the gene.

Components: The ORF clone is ion-exchange column purified and shipped in a 2D barcoded Matrix tube containing 10ug of transfection-ready, dried plasmid DNA (reconstitute with 100 ul of water).

Reconstitution Method:

1. Centrifuge at 5,000xg for 5min.
2. Carefully open the tube and add 100ul of sterile water to dissolve the DNA.
3. Close the tube and incubate for 10 minutes at room temperature.
4. Briefly vortex the tube and then do a quick spin (less than 5000xg) to concentrate the liquid at the bottom.
5. Store the suspended plasmid at -20°C. The DNA is stable for at least one year from date of shipping when stored at -20°C.

RefSeq: [NM_001106313.2](#), [NP_001099783.1](#)

RefSeq Size: 1393 bp

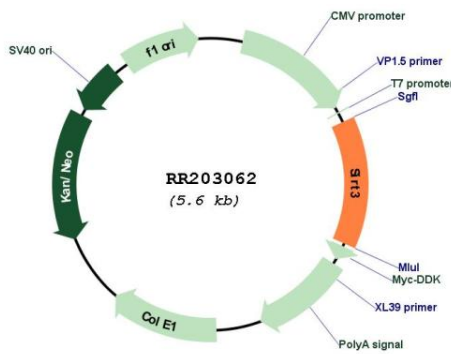
RefSeq ORF: 774 bp

Locus ID: 293615

Cytogenetics: 1q41

MW: 28.5 kDa

Product images:



Circular map for RR203062