

Product datasheet for **RR203034**

Arnt (NM_012780) Rat Tagged ORF Clone

Product data:

Product Type:	Expression Plasmids
Product Name:	Arnt (NM_012780) Rat Tagged ORF Clone
Tag:	Myc-DDK
Symbol:	Arnt
Synonyms:	Arnt1
Mammalian Cell Selection:	Neomycin
Vector:	pCMV6-Entry (PS100001)
E. coli Selection:	Kanamycin (25 ug/mL)



[View online »](#)

**ORF Nucleotide
Sequence:**

>RR203034 representing NM_012780
 Red=Cloning site Blue=ORF Green=Tags(s)

TTTTGTAATACGACTCACTATAGGGCGGCCGGAATTCGTGCGACTGGATCCGGTACCGAGGAGATCTGCC
 GCC**CGCATCGCC**

ATGGCGGCGACTACAGCTAACCCAGAAATGACATCAGATGTGCCATCACTGGGTCCACCATTGCTTCTG
 GAAATCCCGGACCTGGGATTCAAGGTGGAGGAGCTGTTGTCCAGAGGGCTATTAAGCGACGGTCAGGGCT
 GGATTTTGATGATGAAGGAGAAGTGAACAGTAAATTTTTGAGATGTGACGATGAGCAGATGTGTAACGAC
 AAAGAGCGGTTTGCCAGGTGGATGATGAGCAGAGCTCTGCCGATAAAGAGAGACTTGCCAGGGAAAATC
 ATAGTAAATAGAGCGGCGGCGACGGAACAAGATGACAGCTTACATCACAGAAGTGTGACAGATGGTACC
 TACCTGTAGTGCCTGGCTCGAAAACCAGACAAGCTAACCATCTACGCATGGCTGTTTCTCACATGAAG
 TCCTTGAGGGGAACGGGCAATACATCCACTGACGGCTCTACAAGCCGCTCTTCTCACTGATCAGGAAC
 TGAACATTTGATTTGGAGGCAGCAGATGGTTTTCTGTTTATTGTCTCTTGTGAGACTGGCCGAGTGGT
 GTATGTCTCTGACTCGGTGACTCCGTTTTGAACCAGCCACAGTCTGAATGGTTTGGGAGCACACTGTAT
 GACCAAGTGCACCCAGATGATGTGGATAAACTTCGAGAGCAGCTTCTACTTCAGAAAATGCCCTAACAG
 GGCGGATCCTGGATCTGAAGACTGGAACAGTGA AAAAGGAAGGTGAGCAGTCTTCCATGAGGATGTGCAT
 GGGCTCAAGAAGATCGTTCATCTGCCGGATGAGGTGTGGCACCAGCTCTGTGGACCCTGTTTCCATGAAT
 AGACTGAGCTTTTTGAGGAACAGATGCAGGAATGGACTTGGCTCTGTGAAGGAAGGAGAGCCTCACTTTG
 TGGTAGTCCACTGCACAGGTTACATCAAGGCTGGCCACCAGCAGGTGTCTCCCTCCAGATGATGATCC
 AGAGGCTGGCCAGGGGAGCAAATTCGCCTAGTGGCCATTGGCAGGCTGCAGGTAACCAGTTCCTCAAC
 TGTACAGATATGAGTAAACATCTGTGAGCAACAGATTCATCTCCAGACATAACATTGAAGGATATTCA
 CTTTTGTAGATCATCGTTGTGGCTACTGTTGGCTACCAGCCACAGGAGCTCTTAGGAAAAGAAATTTGT
 AGAATTTTGTCTCCTGAAGACCAACAACCTTCTAAGAGACAGCTTTCAGCAGGTGGTGAATTTAAAGGC
 CAAGTGTCTGTCTGATGTTCCGATTCCGAGCTAAGAACCAGAGAATGGCTGTGGATGAGAACAAGCTCCT
 TTACTTTCCAAAACCCGATTTCAGATGAAATGAGTATATTTATCTGCACCAACACCAACGTGAAGAACTC
 TAGCCAGGAACCACGGCCTACATTGTCTAACACAATCCAGAGGTACAGCTAGGTCGACAACCTAATTTA
 TCCCTAGAGATGGGTACAGGTGTCTGGCATCCAGGCAGCAGCAGCAGCAGCAGCAGCAGCAGCAGCAGC
 AGCAGCAGCAGCAGCAGAAATGGATATGGTACCAGGAAGAGATGGGCTGGCCAGCTATAGTCATTCCCA
 GGTTTCTGTCCAGCCGTGGCAACTGCAGGATCAGAACACAGCAAGCCCTTGAGAAGTCAGAAGGTCTC
 TTTGTGCAGGACAGAGATCCGAGTTTTTCAGAAATCTATCCCAACATCAGTGCAGATCAGAGTAAAGGCC
 TCTCCTCCAGCACTGTCCCTGCCACCAACAGCTGTTCTCCAGGGCAGCTCATTCCCTCCTAACCCCGG
 GCCGGCAGAAAATTTAGGAATAGTGGTCTTACCCTCCCGTAACCATTGTCCAGCCGTCATCTTCTGCA
 GGGCAGATATTGGCCAGATTTCTCGTCACTCCAACCTTACCAGGGATCAGCACCACCTTGGACCTCTA
 GCACTCGCCAGGTTTCTCTGCCAGCTGCCTACTCAGGCTACAGCCAAGACTCGTTCCTTCACAATTTGG
 TGTGAACAACCTTCAGACTTCGTCTCCTTCAAGTGGATCCAACCTTCTCCTGAGACTGGACAGACAACAG
 GACAGTTCCAGACCCGGACAGCAGAGGGTGTGGGTGTCTGGCCACAGTGGCAAGGCCAGCAGCCCATCA
 CCGGTCTAGTTCCAATGAGCAACATGTTTCAGCCAACATCAGCACAAACCAAGTAGCCAGCCTGAGGTCTT
 CAAGAAATGCTGTCCATGCTGGGGACAGGCAACACCTACAACAATGAAGAGTTTCTGATCTAACTA
 TGTTTCCCTTTTTCTGAA

ACGCGTACGCGGCGGCTCGAGCAGAAACTCATCTCAGAAGAGGATCTGGCAGCAAATGATATCCTGGATT
 ACAAGGATGACGACGATAAGGTTTAA

Protein Sequence: >RR203034 representing NM_012780
Red=Cloning site Green=Tags(s)

```

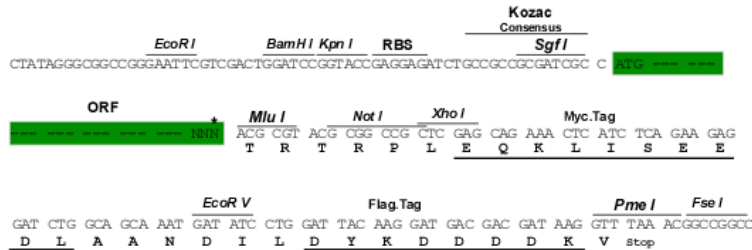
MAATTANPEMTSDVPSLGPSTIASGNPQGGIQQGGAVVQRAIKRRSGLDFDDEGEVNSKFLRCDDQMCND
KERFARSDDEQSSADKERLARENHSEIERRRRNKMTAYITELSDMVPTCSALARKPKLTIILMAVSHMK
SLRGTGNTSTDGSYKPSFLTDQELKHLILEAADGFLFIVSCETGRVVYVSDSVTPVLNQPSSEWFGSTLY
DQVHPDDVDKLRQLSTENALTGRILDKGTGTVKKEGQQSSMRMCMGSRRSFICRMRCGTSSVDPVSMN
RLSFLRNRCRNLGSKVEGEPHFVVHCTGYIKAWPPAGVSLPDDPEAGQGSKFCLVAIGRLQVTSSPN
CTDMSNICQPTEFISRHNIEGIFTFVDHRCVATVGYQPQELLGKNIVEFCHPEDQQLLRDSFQQVVKLKG
QVLSVMFRFRANKREWLWMRTSSFTFQNPYSDEMSIFICTNTNVKNSSQEPRTLSTNIQRSQLGPTTNL
SLEMGTVGLASRQQQQQQQQQQQQTELDMPGRDGLASYSHSQVSVQPVATAGSEHSKPLEKSEGL
FVQDRDPRFSEIYPNISADQSKGLSSSTVPATQQLFSQGSFPNPRPAENFRNSGLTPPVTIVQPSSSA
GQILAQISRHSNLTQGSAPTWTSSTRPGFSAQLPTQATAKTRSSQFGVNNFQTSSSFAMS LPGA PTASP
STAAAYPTLPNRGSNFPETGQTTGQFQTRTAEGVGWVWQWQGGQPHHRSSNEQHVQPTSAQPSSQPEVF
QEML SMLGDQSNTYNNEEFPDLTMFPPFSE
  
```

TRTRPLEQKLI SEEDLAANDILDYKDDDDKV

Restriction Sites: Sgfl-MluI

Cloning Scheme:

Cloning sites used for ORF Shutting:



* The last codon before the Stop codon of the ORF

ACCN: NM_012780

ORF Size: 2400 bp

OTI Disclaimer: The molecular sequence of this clone aligns with the gene accession number as a point of reference only. However, individual transcript sequences of the same gene can differ through naturally occurring variations (e.g. polymorphisms), each with its own valid existence. This clone is substantially in agreement with the reference, but a complete review of all prevailing variants is recommended prior to use. [More info](#)
OTI Annotation: This clone was engineered to express the complete ORF with an expression tag. Expression varies depending on the nature of the gene.

Components: The ORF clone is ion-exchange column purified and shipped in a 2D barcoded Matrix tube containing 10ug of transfection-ready, dried plasmid DNA (reconstitute with 100 ul of water).

Reconstitution Method:

1. Centrifuge at 5,000xg for 5min.
2. Carefully open the tube and add 100ul of sterile water to dissolve the DNA.
3. Close the tube and incubate for 10 minutes at room temperature.
4. Briefly vortex the tube and then do a quick spin (less than 5000xg) to concentrate the liquid at the bottom.
5. Store the suspended plasmid at -20°C. The DNA is stable for at least one year from date of shipping when stored at -20°C.

RefSeq: [NM_012780.1](#), [NP_036912.1](#)

RefSeq Size: 2431 bp

RefSeq ORF: 2403 bp

Locus ID: 25242

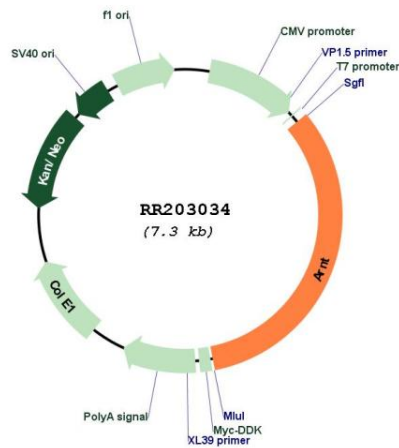
UniProt ID: [P41739](#)

Cytogenetics: 2q34

MW: 88.2 kDa

Gene Summary: may act as a transcription factor; mediates dioxin toxicity [RGD, Feb 2006]

Product images:



Circular map for RR203034