

ACGTTCTGCCCTGAAGCAGGGACAAATGAGAGGTCACTTTCCATACTCATCTCGATGGAGACAGACCT
GGCTCCCGTGGCTCGACTGGTCTCTATGCCATCTACCCAATGGAGAAGTGGTTGGAGACTGCTAAA
TATGAGATTGAGAACTGCCTGGCTAACAAAGGTGGATTTGGTCTTCCGCCGAATAGCGGTCTCCAGCTA
CCCGTGCCTCCTTAGTGTATGGCTTCTCCTCAGTCCCTTTGTGGCCTGCGAGCTGTGGACAAAGCGT
GCTGCTCATGAAACCTGAGACTGAGCTCCTCGCATCCCTGATTTATGACCTGCTACCAGTGAAAGACCTC
ACTGGCTTCCCTCAGGGTGGGATCAACGGGAAGAAGACTAATGGCTGCGTTAAGCAAATGACACT
ACATTAATGGAATCCTGTACTCGCCAGTGCAGAATACAAATGAAGAGGACATGTACGGCTTCCCTAAAGGA
TATGGGCTTAAAGGTATTTACCAACTCGAACATCCGTAAACCCAAAGTCTGCGAACGGCTCAGAGACAAT
AAAGGAATACCAGCTGCGTACCCTCGTAAGCCAAAGCCACATGGACGCTTTTCTAGAGCTTTCAGAGT
CTCCACAGAGACTAGGCGAAGCTACTTCCCTGAGACGTGGATCTGGGACTTGGTGGTGGTGGACTCAGC
AGGAGTGGCTGAAGTGAAGTGACAGTCCCTGACACCATCACTGAATGGAAGGCCGGGCTTCTGCCTG
TCTAATGACACTGGTCTGGGCTGTCTCCTGTGGTCCAATTCCAAGCCTTCCAGCCCTTCTCGTGGAGC
TCACAATGCCCTACTCCGTGATCCGTGGAGAAGCCTTACGCTCAAGGCCACTGTGCTGAACTACCTCCC
TACATGCATCCGGTTGCCGTGACGCTGGAGGCCCTCTCCCGATTTCTGGCTGCCCCAGAGGAGAAGGAA
CAAAGGTCTCACTGCATCTGTATGAACCAGCGGCACACCCGCTCTGGCAGTGATCCCCAAGTCATTAG
GAAATGTGAATTTACAGTTAGTGCAGAGGCACCTGAACCTAAGGAGCTGTGTGGGAATGAGGTACCGGT
GGTCCCTGAACAGGGCAAAAAGACACGATCATCAAGTCCCTGCTGGTTGAACCCGAAGGTCTAGAGAAC
GAAGTGACATTTAACAGTCTGCTTTGTCCAATGGGTGCTGAGGTATCTGAACTGATAGCCCTGAAGCTGC
CATCAGACGTGGTAGAGGAATCTGCCAGAGCCTCTGTCACAGTTTTGGGAGATATATTGGTTCTGCCAT
GCAGAATACACAGGATCTCCTCAAGATGCCCTATGGCTGTGGAGAACAGAACATGGTTCTATTTGCTCCT
AATATCTATGCTCCTGGACTATCTGAATGAAACACAGCAGCTGACACAGGAGATCAAGACCAAGGCCATTG
CCTATCTCAATACGGGCTACCAAAGACAATTAACCTACAAGCACCAGGATGGCTCCTACAGCACCTTTGG
GGATAAACCTGGCAGGAATCATGCCAATACCTGGCTCACAGCCTTTGTACTGAAGATTTTGTCTCAGGCT
CGAAAATATATCTTCATCGATGAAGTACACATCACCCAAAGCCCTTATGGCTCTCTCAGCAGCAGAAGG
ACAATGGTTGTTTCAGGAGCTCCGGTCACTGCTCAACAATGCCATGAAGGGAGGAGTAGAAGATGAAGT
CACCTTGTCTGCCTACATCACCATAGCTCTCCTGGAGATGTCTCTTCTGTCACTCATCCTGTTGTCCGC
AATGCCCTCTTTTGCCTGGACACAGCCTGGAAGTCAAGAGGGGAGGAGCTGGTGGCAGCCATGTCTACA
CTAAGGCGCTGTTGGCCTATGCATTTGCCCTTGTGGTAAACCAGGACACGAAGAAGGAGATCCTGAAATC
ACTCGATGAGGAGGCTGTAAAAGAAGAAGATTCTGTCCACTGGACCAGACCTCAGAAACCCAGCGTGCA
GTGGCCCTCTGGTACCAACCCAGGCTCCCTCGGCTGAGGTAGAGATGACTGCATATGTGCTCCTGGCTT
ATCTTACCAGTACGACCTCAACCCAAAGAGGACCTAACGGCTGCCATGCTCATCGTGAAGTGGCTCAC
AAAGCAGCAGAATTTCCACGGTGGCTTCTTCCACCCAGGACACTGTAGTGGCTCTCCACGCTTTGTCC
AAATACGGGTCCGCCACTTTACAAAGAGCTAAGAAAGTGCACAGGTGACCATCCATTCTTCGGGCACAT
TTTCTACAAAATCCAAGTCAACAACAACAACCAATTATTACTCCAGAGAGTACATTGCCGACTGTGCC
TGGGGATTACACCGTGAAGGTGACAGGAGAAGGCTGTGTCTATCTCCAGACATCCTTGAAATACAGTGT
CTCCCCGAGAGAGGAGGAGTTCCCTTCACTGTGGTGGTGCAGACTCTGCCTGGGACATGTGAGGATCCCA
AAGCTCACACCAGCTTCCAGATCACTCAACATCAGTTACACTGGAAGCCGTTCTGAATCCAACATGGC
AATTGCTGACGTGAAGATGGTGTCCGGCTTATCCCTTGAACCAACAGTGAATGCTTGAAGATCT
GTGCATGTGAGCCGAACAGAAGTCAAGCAATAACCATGTCTTGAATTTACCTGGATAAGGTGTCAAATCAG
CGGTGAACTTGTCTTACGGTTACAGCAAGATATTCCAATAAGAGACCTGAAGCCAGCCGTAGTGAAGT
CTACGATTACTATGAGAAAGATGAGTTTGCAGTTGCAAAAATACAGCGCTCCCTGCAGCACAGATTATGGA
AATGCC

ACGCGTACGCGGCCGCTCGAGCAGAACTCATCTCAGAAGAGGATCTGGCAGCAAATGATATCCTGGATT
ACAAGGATGACGACGATAAGGTTTAA

Protein Sequence: >RR203025 representing NM_012488
 Red=Cloning site Green=Tags(s)

MGKHRLRSLALLPLLLRLLLLLLPTDASAPQKPIYMMVPSLLHAGTPEKACFLFSHLNETVAVRVSLES
 VRGNQSLFTDLVVDKDLFHCTSFVTPQSSSDEVMFFTVQVKGATHEFRRRSTVLVKKKESLVFAQTDKPI
 YKPGQTVRFRVVSLEDFHPLNELIPLLYIQDPKNNRIAQWQNFNLEGLKQLSFPLSSEPTQGSYKVV
 RTESGRVVEHPFSVEEFVLPKFEVRVTPETITILEEEMNVSVCGIYTYGKVPVGRVTVNICRKYSNPSN
 CFGEESVAFCEKLSQQLDGRGCFSQLVKTKSFQLKRQEYEMQLDVHAKIQEEGTGVEETGKGLTKITRTI
 TKLSFVNVDSHFRQGIPIFVGQVLLVDGRGTPIPYETIFIGADEANLYINTTTDKHGLARFSINTDDIMGT
 SLTVRAKYKDSNACYGFRWLTEENVEAWHTAYAVFSPSRSLHLESPLDKLRCDQTELVQAHYILNGEAM
 QELKELVFYLLMAKGGIVRAGTHVPLKQGMRGHFSILISMETDLAPVARLVL YAILPNGEVVGDTAK
 YEIENCLANKVDLVFRPNSGLPATRALLSVMASPQSLCGLRAVDQSVLLMKPETELASLIYDLPVKDL
 TGFPQGADQREEDTNGCVKQNDTYINGILYSPVQNTNEEDMYGFLKDMGLKVFTNSNIRKPKVCERLRDN
 KGIPAAAYHLVSQSHMDAFLESSEPTETRRSYFPETWIWDLVVVDSAGVAEVEVTPDITTEWKAGAFCL
 SNTDGLGLSPVVQFQAFQPFVVELTMPYSVIRGEAFTLKATVNLNYLPTCIRVAVQLEASPDFLAAPEEKE
 QRSHCICMNQRHTASWAVIPKSLGNVNFVSAEALNSKELCGNEVPVPEQGGKDTIISKLLVEPEGLEN
 EVTFNLLCPMGAEVSELIALKLPSDVVEESARASVTVLGDILGSAMQNTQDLLKMPYGCGEQNMVLFAP
 NIYVLDYLNQQLTQEIKTKAIAYLNTGYQRQLNYKHRDGSYSTFGDKPGRNHANTWLTAFVLKSAFAQ
 RKYIFIDEVHITQALLWLSQQQKDNCGFRSSGSLNNAMKGGVEDEVTL SAYITIALLEMSLPVTHPVVR
 NALFCLDTAWKSARGGAGGSHVYTKALLAYAFALAGNQDTKKEILKSLDEEAVKEEDSVHWTRPQKPSVS
 VALWYQPQAPSAEEMTAYVLLAYLTTEPAPTQEDLTAAMLIKWLTKQNSHGGSSTQDVTVALHALS
 KYGSATFTRAKKAAQVTIHSSGTFSTKQVNNNNQLLLQRVTLPTVPGDYTVKVTGEGCVYLQTSKYSV
 LPREEEFPFTVVVQTLPGTCEDPKAHTSFQISLNI SYTGSRSSENMAIADVKMVS GFIPLKPTVKMLERS
 VHSVSRTEVSNHVL IYLDKVSNTVNL SF TVQQDIPIRDLKPAVVKVYDYEKDEF AVAKYSAPCSTDYGN
 A

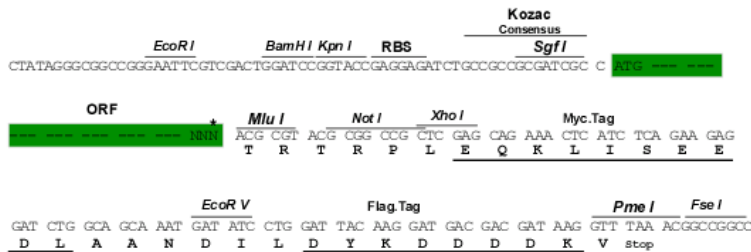
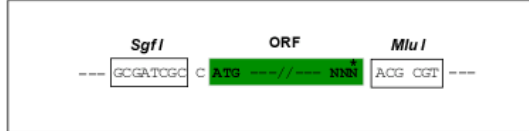
TRTRPLEQKLISEEDLAANDILDYKDDDDKV

Restriction Sites:

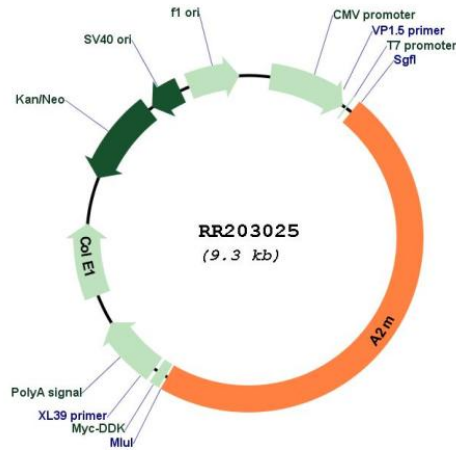
Sgfl-MluI

Cloning Scheme:

Cloning sites used for ORF Shuttling:



* The last codon before the Stop codon of the ORF

Plasmid Map:


ACCN: NM_012488

ORF Size: 4416 bp

OTI Disclaimer: The molecular sequence of this clone aligns with the gene accession number as a point of reference only. However, individual transcript sequences of the same gene can differ through naturally occurring variations (e.g. polymorphisms), each with its own valid existence. This clone is substantially in agreement with the reference, but a complete review of all prevailing variants is recommended prior to use. [More info](#)

OTI Annotation: This clone was engineered to express the complete ORF with an expression tag. Expression varies depending on the nature of the gene.

Components: The ORF clone is ion-exchange column purified and shipped in a 2D barcoded Matrix tube containing 10ug of transfection-ready, dried plasmid DNA (reconstitute with 100 ul of water).

Reconstitution Method:

1. Centrifuge at 5,000xg for 5min.
2. Carefully open the tube and add 100ul of sterile water to dissolve the DNA.
3. Close the tube and incubate for 10 minutes at room temperature.
4. Briefly vortex the tube and then do a quick spin (less than 5000xg) to concentrate the liquid at the bottom.
5. Store the suspended plasmid at -20°C. The DNA is stable for at least one year from date of shipping when stored at -20°C.

RefSeq: [NM_012488.2](#), [NP_036620.2](#)

RefSeq Size: 4614 bp

RefSeq ORF: 4419 bp

Locus ID: 24153

UniProt ID: [P06238](#)

Cytogenetics: 4q42

MW: 163.8 kDa

Gene Summary: plays a role in acute phase response; activated form induces a decrease in N-methyl-D-aspartate (NMDA) mediated calcium signaling [RGD, Feb 2006]