

Product datasheet for **RR203024**

Prph2 (NM_013021) Rat Tagged ORF Clone

Product data:

Product Type: Expression Plasmids
Product Name: Prph2 (NM_013021) Rat Tagged ORF Clone
Tag: Myc-DDK
Symbol: Prph2
Synonyms: Rds; RSRDS
Vector: pCMV6-Entry (PS100001)
E. coli Selection: Kanamycin (25 ug/mL)
Cell Selection: Neomycin
ORF Nucleotide Sequence: >RR203024 representing NM_013021
Red=Cloning site Blue=ORF Green=Tags(s)

TTTTGTAATACGACTCACTATAGGGCGGCCGGAATTCGTCGACTGGATCCGGTACCGAGGAGATCTGCC
GCC**CGATCGCC**

ATGGCGCTGCTCAAAGTCAAGTTTGACCAGAAGAAGCGGGTCAAGTTGGCCAGGGGCTATGGCTTATGA
ACTGGCTGTCGGTGTGGCCGGCATCGTCTCTCAGCCTGGGGCTGTTCTGAAGATTGAACTCCGCAA
GAGGAGTGACGTGATGGATAACTCCGAGAGCCACTTTGTGCCAACTCCCTGATTGGGGTGGGGTCCTG
TCCTGTGTCTTCAACTCTGGCTGGGAAGATCTGCTATGACGCCCTGGACCCTGCCAAGTACGCCAAGT
GGAAGCCCTGGTGAAGCTGTACCTGGCCGTCTGCGTCTCTTTAACGTCATCCTCTTCTGGTGGCGCT
CTGCTGCTTTCTGCTGCGAGGCTCCCTGGAGAGCACCTGGCGTACGGGCTCAAGAACGGGATGAAGTAC
TATCGGGACACGGACACGCCAGGCCGGTCTTCATGAAAAAGACCATCGACATGCTCCAGATCGAGTTCA
AGTGCTGTGGGAACAACGGCTCCCGGACTGGTTCGAGATTCAGTGGATCAGCAATCGCTATCTGGACTT
TTCCTCAAGGAGGTCAAAGACCGCATCAAGAGTAATGTGGATGGGAGGTACCTGGTGGACGGCGTCCCC
TTCAGCTGCTGCAACCCAGCTCCCCCGGCCCTGTATTACAGTACCAGCTACCAACAACCTGCGCACT
ACAGCTATGACCACCAGACCGAGGAGCTAACCTCTGGCTGCGGGGTTGCAGGGCTGCCCTGCTGAATTA
CTACAGCAGCCTCATGAACTCCATGGGCGTTGTCACGCTTCTCATCTGGCTTTTGAGGTGAGCATCACT
GCCGGACTCCGCTTCTCCACACAGCGTGGAGAGCGTGTCCAACCCGGAGGACCCTGAGTGTGAGAGCG
AGGGCTGGTTGCTGGAGAATAGCGTGTCCGAGACCTGGAAGGCCCTTCTGGAGAGCTTTAAAAAAGTGG
CAAGAGCAATCAGGTGGAGGCTGAAGCTGCAGACGCAGGCCAGGCCCCAGAGGCTGGC

ACGGTACGGGCCGCTCGAGCAGAACTCATCTCAGAAGAGGATCTGGCAGCAATGATATCTGGATT
ACAAGGATGACGACGATAAGGTTTAA



[View online »](#)

Protein Sequence: >RR203024 representing NM_013021
Red=Cloning site Green=Tags(s)

MALLKVKFDQKKRVKLAQGLWLMNWL SVLAGIVL FSLGLFLKIELRKRSDVMDNSESHPVNSLIGVGL
 SCVFNFLAGKICYDALDPAKYAKWKPWLKLYLAVCVFFNVILFLVALCCFLLRGSLESTLAYGLKNGMKY
 YRDTDTPGRCFMKKTIDMLQIEFKCCGNGFRDWFIEIQWISNRYLDFSSKEVKDRIKSNDGRYLVDGVP
 FSCCNPSSPRPCIQYQLTNNSAHYSYDHQTEELNLWLRGCRAALLNYYSSLMNSMGVVTLLIWLFEVSIT
 AGLRFLHTALESVSNPEDPECESEGWLLENS SVSETWKAFL ESFKKL GKSQV EAEADAGQ APEAG

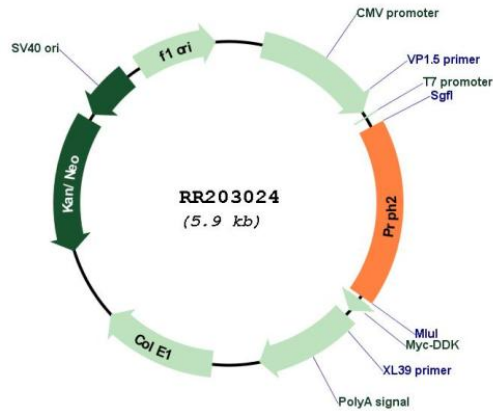
TRTRPLEQKLISEEDLAANDILDYKDDDDKV

Restriction Sites: SgfI-MluI

Cloning Scheme:



Plasmid Map:



ACCN: NM_013021

ORF Size: 1038 bp

OTI Disclaimer:	The molecular sequence of this clone aligns with the gene accession number as a point of reference only. However, individual transcript sequences of the same gene can differ through naturally occurring variations (e.g. polymorphisms), each with its own valid existence. This clone is substantially in agreement with the reference, but a complete review of all prevailing variants is recommended prior to use. More info
OTI Annotation:	This clone was engineered to express the complete ORF with an expression tag. Expression varies depending on the nature of the gene.
Components:	The ORF clone is ion-exchange column purified and shipped in a 2D barcoded Matrix tube containing 10ug of transfection-ready, dried plasmid DNA (reconstitute with 100 ul of water).
Reconstitution Method:	<ol style="list-style-type: none">1. Centrifuge at 5,000xg for 5min.2. Carefully open the tube and add 100ul of sterile water to dissolve the DNA.3. Close the tube and incubate for 10 minutes at room temperature.4. Briefly vortex the tube and then do a quick spin (less than 5000xg) to concentrate the liquid at the bottom.5. Store the suspended plasmid at -20°C. The DNA is stable for at least one year from date of shipping when stored at -20°C.
RefSeq:	NM_013021.1 , NP_037153.1
RefSeq Size:	1562 bp
RefSeq ORF:	1041 bp
Locus ID:	25534
UniProt ID:	P17438
Cytogenetics:	9q12
MW:	39.3 kDa
Gene Summary:	mouse homolog is required for formation of photoreceptor outer discs and is mutated in a model of retinitis pigmentosa [RGD, Feb 2006]