

Product datasheet for **RR203018**

Lsm5 (NM_001107289) Rat Tagged ORF Clone

Product data:

Product Type: Expression Plasmids
Product Name: Lsm5 (NM_001107289) Rat Tagged ORF Clone
Tag: Myc-DDK
Symbol: Lsm5
Vector: pCMV6-Entry (PS100001)
E. coli Selection: Kanamycin (25 ug/mL)
Cell Selection: Neomycin
ORF Nucleotide Sequence: >RR203018 representing NM_001107289
Red=Cloning site Blue=ORF Green=Tags(s)

TTTTGTAATACGACTCACTATAGGGCGGCCGGAATTCGTCGACTGGATCCGGTACCGAGGAGATCTGCC
GCC**CGATCGC**C

ATGGCGGCTAACGCGACCACGAACCCGTCTCAACTCCTGCCACTAGAGCTTGTGGACAAGTGTATAGGAT
CAAGAATTCACATTGTGATGAAGAGTGATAAAGAAATCGTGGGTACACTTCTAGGATTTGATGACTTTGT
CAATATGGTGTGGAAGATGTCACAGAGTTTCAAATTACACCAGAAGGAAGAATTACAAAATTAGAT
CAAATTCTACTAAATGGAATAATATAACAATGCTGGTTCTGGAGGAGAAGGCCTGAAGTA

ACGCGTACGCGGCCGCTCGAGCAGAACTCATCTCAGAAGAGGATCTGGCAGCAATGATATCCTGGATT
ACAAGGATGACGACGATAAGGTTTAA

Protein Sequence: >RR203018 representing NM_001107289
Red=Cloning site Green=Tags(s)

MAANATTNPSQLLPLELVDKCIGSRIHIVMKSKEIVGTLGDFDFVNMVLEDVTEFEITPEGRRITKLD
QILLNGNITMLVPGGEGPEV

TRTRPLEQKLISEEDLAANDILDYKDDDDKV

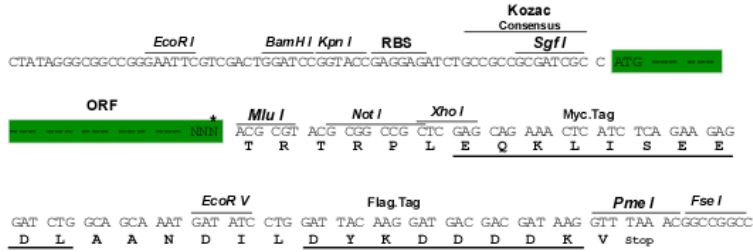
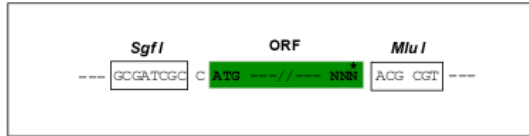
Restriction Sites: Sgfl-MluI



[View online »](#)

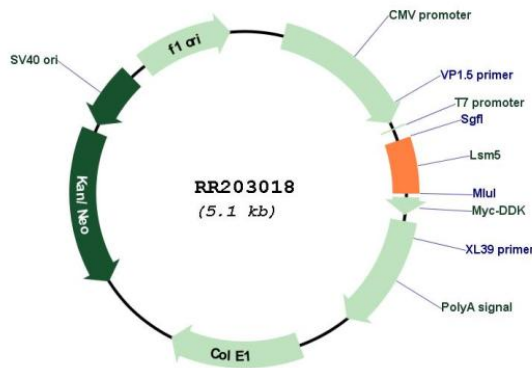
Cloning Scheme:

Cloning sites used for ORF Shuttling:



* The last codon before the Stop codon of the ORF

Plasmid Map:



ACCN: NM_001107289

ORF Size: 273 bp

OTI Disclaimer:	The molecular sequence of this clone aligns with the gene accession number as a point of reference only. However, individual transcript sequences of the same gene can differ through naturally occurring variations (e.g. polymorphisms), each with its own valid existence. This clone is substantially in agreement with the reference, but a complete review of all prevailing variants is recommended prior to use. More info
OTI Annotation:	This clone was engineered to express the complete ORF with an expression tag. Expression varies depending on the nature of the gene.
Components:	The ORF clone is ion-exchange column purified and shipped in a 2D barcoded Matrix tube containing 10ug of transfection-ready, dried plasmid DNA (reconstitute with 100 ul of water).
Reconstitution Method:	<ol style="list-style-type: none"> 1. Centrifuge at 5,000xg for 5min. 2. Carefully open the tube and add 100ul of sterile water to dissolve the DNA. 3. Close the tube and incubate for 10 minutes at room temperature. 4. Briefly vortex the tube and then do a quick spin (less than 5000xg) to concentrate the liquid at the bottom. 5. Store the suspended plasmid at -20°C. The DNA is stable for at least one year from date of shipping when stored at -20°C.
RefSeq:	NM_001107289.1 , NP_001100759.1
RefSeq Size:	539 bp
RefSeq ORF:	276 bp
Locus ID:	306222
Cytogenetics:	4q24
MW:	9.9 kDa