

## Product datasheet for **RR203007**

### **Dpp4 (NM\_012789) Rat Tagged ORF Clone**

#### **Product data:**

Product Type:	Expression Plasmids
Product Name:	Dpp4 (NM_012789) Rat Tagged ORF Clone
Tag:	Myc-DDK
Symbol:	Dpp4
Synonyms:	CD26; DPPIV
Mammalian Cell Selection:	Neomycin
Vector:	pCMV6-Entry (PS100001)
E. coli Selection:	Kanamycin (25 ug/mL)



[View online »](#)

ORF Nucleotide  
Sequence:

>RR203007 representing NM\_012789  
 Red=Cloning site Blue=ORF Green=Tags(s)

TTTTGTAATACGACTCACTATAGGGCGGCCGGAATTCGTCGACTGGATCCGGTACCGAGGAGATCTGCC  
 GCC**CGGATCGCC**

ATGAAGACACCGTGAAGGTTCTTCTGGGACTGCTTGGTGTGCTGCGCTTGTACCATCATCACCGTGC  
 CAGTGGTTCTGCTGAACAAAGATGAAGCGGCCGCTGATAGCGCGAGAACTTACACACTAGCTGACTATTT  
 AAAGAATACTTTTCGGGTCAAGTCTACTCCTTCCGGTGGGTTTCAGATTCTGAATACCTCTACAAGCAA  
 GAAAACAATATCTTGCTATTCAATGCTGAACACGGGAACAGCTCCATTTTCTGGAGAACAGTACCTTTG  
 AGATCTTTGGAGATTCTATAAGTGATTATTCAGTGTACCCGACAGACTGTTCTGTTCTTTAGAATAACA  
 TTATGTGAAGCAATGGAGACACTCTACACGGCTTCATACAGTATTTATGACTTGAATAAAAAGACAGCTG  
 ATCACAGAAGAGAAGATCCAAATAATACACAGTGGATCAGTGGTCCACAAGAAGGTCACAAATTGGCAT  
 ATGTCTGGAAGAATGATATTTATGTTAAAATTGAACCACATTTGCCTAGTCATAGGATCAGTCAACAGG  
 AAAAGAAAATGTAATATTTAACGGAATAAATGACTGGGTTTATGAAGAGGAAATCTTCGGTCCCTACTCC  
 GCACTGTGGTGGTCTCCAAACGGCACTTTCTAGCTTATGCCAGTTAACGACACCGGAGTGCCTCTCA  
 TTGAATACTCCTTCTACTCTGATGAGTCACTGCAGTACCCCAAGACAGTCTGGATTCCGTACCCAAAGGC  
 AGGAGCTGTGAATCCAACCTGTAAGTCTTTATTGTAATAACAGACTCTCTCAGCTCAACTACTACTACG  
 ATTTCCCATGCAAATCACCGCTCTGCACTGTGACAACAGGGGATCACTACTTGTGTGACGTGGCCTGGG  
 TTTTCAAGACAGAATCTCGTTGCAAGTGGCTCAGGAGGATTTCAGAACTATTCGGTATGGCGATCTGCGA  
 CTATGATAAGACCACCCTAGTATGGAACGTCCAAACGACGAGGAGCATATTGAAACGAGTGCACAGGC  
 TGGTGCAGGAAATTTAGGCCTGCAGAACCCCACTTACCTCCGACGGAAGCAGCTCTATAAAATCGTCA  
 GTGACAAAAGATGGCTACAAACACATCTGCCAGTCCAGAAAGATAGGAAACCCGAACAGGCTGTACATT  
 TATTACAAAAGGAGCCTGGGAAGTCATTAGTATCGAAGCTCTGACCAGGATTATCTGTACTACATTAGT  
 AATGAATATAAAGAAATGCCAGGAGGAAGAAATCTTTATAAAAATTCAGCTTACTGACCACACAAATAAGA  
 AGTGCCTTAGTTGTGACCTGAATCCAGAAAGATGCCAGTATTACTCGGTGTCACTTAGTAAAGAGGCAAA  
 GTACTATCAGCTGGGATGCCGGGCCCTGGTCTGCCCTCTACACTCTGCATCGCAGCACTGATCAAAAA  
 GAGCTGAGAGTCTGGAGGACAATTCTGCTTTGGATAAAATGCTGCAAGATGTCCAAATGCCTTCAAAAA  
 AATTGGACTTCATTGTTCTGAATGAAACAAGATTTTGGTATCAAATGATCTTACCTCCTCATTTTGATAA  
 ATCCAAGAAATACCCTCTACTAATAGATGTATATGCAGGTCCTGTAGTCAAAAAGCAGATGCTGCCTTC  
 AGACTCAACTGGGCCACTTACCTTGCAAGCACAGAAAACATCATAGTAGCTAGCTTTGATGGCAGAGGAA  
 GTGGTTACCAAGGAGATAAGATCATGCATGCAATCAACAAAAGACTTGGAACTGGAAGTTGAAGATCA  
 AATTGAAGCAGCCAGGCAATTTTTAAAAATGGGATTTGTGGACAGCAAGCGAGTTGCAATTTGGGCTGG  
 TCATATGGAGGGTACGTAACCTCAATGGTCTGGGATCGGGAAGTGGCGTGTCAAGTGTGGAATAGCCG  
 TGGCGCCCGTGTACGGTGGGAGTACTATGACTCAGTATACACAGAGCGTTACATGGGTCTCCCAACTCC  
 AGAGGACAACCTTGACCATTACAGGAACCAACAGTCAAGCAGAGCTGAAAATTTTAAGCAAGTTGAG  
 TACCTCCTTATTCACGGTACAGCAGATGATAATGTTCACTTTTACGAGTCAGCTCAGATCTCCAAAGCCC  
 TGGTGGATGCTGGCGTGGATTTCCAAGCAATGTGGTACACGGACGAAGACCATGGGATCGCCAGCAGCAC  
 AGCTCACAGCACATCTATCCACATGAGCCATTTCTCCAGCAGTGTCTCTCCTTACGC

**ACGCGT**ACGCGGCCGCTCGAGCAGAAACTCATCTCAGAAGAGGATCTGGCAGCAAATGATATCCTGGATT  
 ACAAGGATGACGACGATAAGGTTTAA

**Protein Sequence:** >RR203007 representing NM\_012789  
 Red=Cloning site Green=Tags(s)

MKTPWKVLLGLLGVAALVTIITVPVLLNKDEAAADSARTYTLADYLKNTFRVKSYSYLRWVSDSEYLYKQ  
 ENNILLFNAEHGNSSIFLENSTFEIFGDSISDYSVSPDRLFVLLLEYNVYKQWRHSYASYSIYDLNKRQL  
 ITEEKIPNNTQWITWSQEGHKLAYVWKNDIYVKIEPHLPSHRITSTGKENVIFNGINDWVYEEEEIFGAYS  
 ALWWSPNGTFLAYAQFNDTGVPLIEYSFYSDLSLQYPKTVWIPYKAGAVNPTVKFFIVNTDSLSTTTT  
 IPMQITAPASVTTGDHYLCDVAWYSEDRLSLQWLRRIQNYSVMAICDYDKTTLVWNCPTTQEHETSATG  
 WCGRFRPAEPHFTSDGSSFYKIVSDKDGKHCQFQKDRKPEQVCTFITKGAVEVISIEALTSYLYYIS  
 NEYKEMPGGRNLYKIQLTDHTNKKCLSCDLNPERCQYYSVLSKEAKYYQLGCRGPGLPLYLHRSTDQK  
 ELRVLEDNSALDKMLQDVQMPSSKLLDFIVLNETRFWYQMLPPHFDKSKKYPLLIDVYAGPCSQKADAA  
 RLNWATYLASTENIIVASFDGRSGYQGDKIMHAINKRLGTLEVEDQIEAARQFLKMGFVDSKRVAIWGW  
 SYGGYVTSMLVSGSGVFKCGIAPVSRWEYYDSVYTERYMGLPTPEDNLDHYRSTVMSRAENFKQVE  
 YLLIHGTADDNVHFQSSAQISKALVDAGVDFQAMWYTTDEDHGIASSTAHQHIYSHMSHLFQQCFSLR

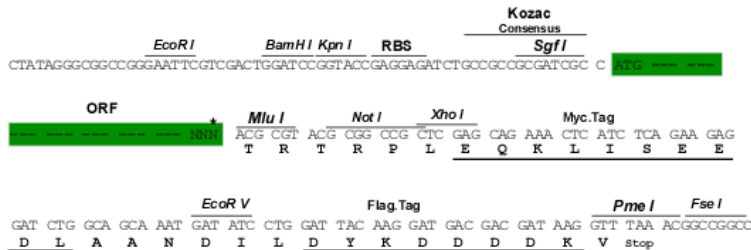
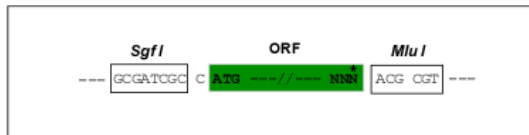
TRTRPLEQKLISEEDLAANDILDYKDDDDKV

**Restriction Sites:**

SgfI-MluI

**Cloning Scheme:**

Cloning sites used for ORF Shuttling:



\* The last codon before the Stop codon of the ORF

**ACCN:** NM\_012789

**ORF Size:** 2301 bp

**OTI Disclaimer:** The molecular sequence of this clone aligns with the gene accession number as a point of reference only. However, individual transcript sequences of the same gene can differ through naturally occurring variations (e.g. polymorphisms), each with its own valid existence. This clone is substantially in agreement with the reference, but a complete review of all prevailing variants is recommended prior to use. [More info](#)

**OTI Annotation:** This clone was engineered to express the complete ORF with an expression tag. Expression varies depending on the nature of the gene.

**Components:** The ORF clone is ion-exchange column purified and shipped in a 2D barcoded Matrix tube containing 10ug of transfection-ready, dried plasmid DNA (reconstitute with 100 ul of water).

**Reconstitution Method:**

1. Centrifuge at 5,000xg for 5min.
2. Carefully open the tube and add 100ul of sterile water to dissolve the DNA.
3. Close the tube and incubate for 10 minutes at room temperature.
4. Briefly vortex the tube and then do a quick spin (less than 5000xg) to concentrate the liquid at the bottom.
5. Store the suspended plasmid at -20°C. The DNA is stable for at least one year from date of shipping when stored at -20°C.

**RefSeq:** [NM\\_012789.1](#), [NP\\_036921.1](#)

**RefSeq Size:** 4835 bp

**RefSeq ORF:** 2304 bp

**Locus ID:** 25253

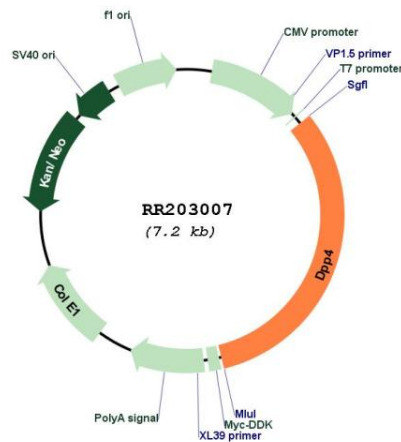
**UniProt ID:** [P14740](#)

**Cytogenetics:** 3q21

**MW:** 88 kDa

**Gene Summary:** catalyzes the degradation of glucagon-like peptide-1 (Glp-1); involved in proteolysis and peptidolysis [RGD, Feb 2006]

**Product images:**



Circular map for RR203007