

Product datasheet for **RR202980**

Csn2 (NM_017120) Rat Tagged ORF Clone

Product data:

Product Type: Expression Plasmids
Product Name: Csn2 (NM_017120) Rat Tagged ORF Clone
Tag: Myc-DDK
Symbol: Csn2
Synonyms: Csnb
Vector: pCMV6-Entry (PS100001)
E. coli Selection: Kanamycin (25 ug/mL)
Cell Selection: Neomycin
ORF Nucleotide Sequence: >RR202980 representing NM_017120
Red=Cloning site Blue=ORF Green=Tags(s)

TTTTGTAATACGACTCACTATAGGGCGGCCGGAATTCGTCGACTGGATCCGGTACCGAGGAGATCTGCC
GCC**GCGATCGCC**

ATGAAGGTCTTCATCCTTGCCTGCCTTGTGGCACTTGCTCTTGAAGGGAGAAGGATGCATTCACCTGTG
CCTCTGAGACTGGTAGTATTTCCAGTGAGGAATCCGTTGAACATATCAATGAGAACTTCAGAAGGTGAA
ACTCATGGGACAGGTGCAGTCCGAGGATGTGCTCCAGAATAAATTCACCTCCGGCATTTCAGTCAGAACCC
CAGGCCATTCCATATGCCAGACCATCTCTGAGTCCCATTCCACAAAACATCCAGCCTATTGCTCAAC
CCCCTGTGGTGCCAACCTGTTGGGCTATCATTTCTCCTGAACTGGAATCCTTCTTAAAGCTAAAGCCAC
TGTCTTCCCAAGCACAAACAGATGCCCTTCTTAACTCTGAAACCGTGTCTCCGCCTCTTAACTCTCAA
ATCCCCAGTCTTGATCTTGCTAATCTGCACCTTCTCAGTCTCCAGCCCAGCTCCAGGCACAAATTTGTC
AGGCTTTTCTCAGACTCCCGGGTGGTTTCTTCTCAGCCCCAGCTGTCTTCTCAGTCCAAAAGTCA
GTACCTTGTGCAGCAACTAGCACCCCTCTTCCAACAAGGTATGCCTGTTCAGACCTTCTGCAGTACCTA
GATCTTCTGCTTAACCCACCCCTCCAGTTCCTTGCCACTCAACAACCTTCATTCCACTTCTGTC

ACGCGTACGCGGCCGCTCGAGCAGAACTCATCTCAGAAGAGGATCTGGCAGCAAATGATATCCTGGATT
ACAAGGATGACGACGATAAGGTTTAA



[View online »](#)

Protein Sequence: >RR202980 representing NM_017120
 Red=Cloning site Green=Tags(s)

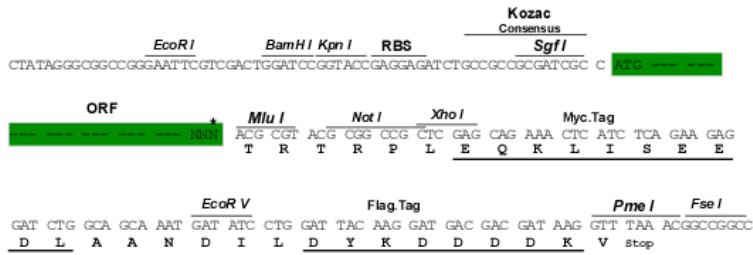
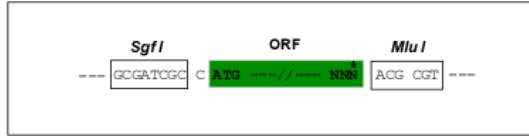
MKVFILACLVALALAREKDAFTVSSETGSISSSEESVEHINEKLQKVKLMGQVQSEDVLQNKFHSGIQSEP
 QAIPYAQTISCSPIPQNIQPIAQPPVPTVGPIISPELESFLKAKATVLPKHKQMPFLNSETVLRFLNSQ
 IPSLDLANLHLPQSPAQLQAQIVQAFPTPAVSSQPQLSLPQSKSQYL VQQLAPLFQQGMVQDILLQYL
 DLLLNP TLQFLATQQLHSTSV

TRTRPLEQKLISEEDLAANDILDYKDDDDKV

Restriction Sites: Sgfl-MluI

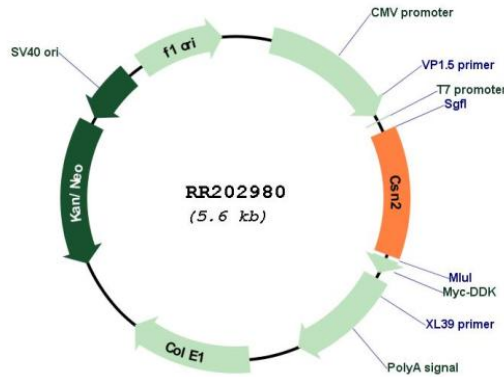
Cloning Scheme:

Cloning sites used for ORF Shuttling:



* The last codon before the Stop codon of the ORF

Plasmid Map:



ACCN: NM_017120

ORF Size: 693 bp

OTI Disclaimer:	The molecular sequence of this clone aligns with the gene accession number as a point of reference only. However, individual transcript sequences of the same gene can differ through naturally occurring variations (e.g. polymorphisms), each with its own valid existence. This clone is substantially in agreement with the reference, but a complete review of all prevailing variants is recommended prior to use. More info
OTI Annotation:	This clone was engineered to express the complete ORF with an expression tag. Expression varies depending on the nature of the gene.
Components:	The ORF clone is ion-exchange column purified and shipped in a 2D barcoded Matrix tube containing 10ug of transfection-ready, dried plasmid DNA (reconstitute with 100 ul of water).
Reconstitution Method:	<ol style="list-style-type: none">1. Centrifuge at 5,000xg for 5min.2. Carefully open the tube and add 100ul of sterile water to dissolve the DNA.3. Close the tube and incubate for 10 minutes at room temperature.4. Briefly vortex the tube and then do a quick spin (less than 5000xg) to concentrate the liquid at the bottom.5. Store the suspended plasmid at -20°C. The DNA is stable for at least one year from date of shipping when stored at -20°C.
RefSeq:	NM_017120.3 , NP_058816.2
RefSeq Size:	1130 bp
RefSeq ORF:	696 bp
Locus ID:	29173
UniProt ID:	P02665
Cytogenetics:	14p21
MW:	25.3 kDa
Gene Summary:	expression is induced by pseudophosphorylated prolactin in mammary gland [RGD, Feb 2006]