

Product datasheet for **RR202953**

Epx (NM_001107037) Rat Tagged ORF Clone

Product data:

Product Type:	Expression Plasmids
Product Name:	Epx (NM_001107037) Rat Tagged ORF Clone
Tag:	Myc-DDK
Symbol:	Epx
Vector:	pCMV6-Entry (PS100001)
E. coli Selection:	Kanamycin (25 ug/mL)
Cell Selection:	Neomycin



[View online »](#)

ORF Nucleotide
Sequence:

>RR202953 representing NM_001107037
 Red=Cloning site Blue=ORF Green=Tags(s)

TTTTGTAATACGACTCACTATAGGGCGGCCGGAATTCGTGACTGGATCCGGTACCGAGGAGATCTGCC
 GCC**CGGATCGCC**

ATGCAGCTGCTGTGCCCTGTAGGGTCTTAGCCACGTTTCATCCTCACACAACCTCGTGAGGGCACTG
 TCCCAGCTCCCCCAGTCCAGTGGAGAATTCAGTCCTTCAAGACTGCATAGCAGAGGCGAAGTTGCTGGT
 GGACACTGCCTACAATCGGACACAGAAGAGCATTGTGCAGCGTCTTCAAAGCGGCTCGGCCAGCCCCATG
 GACCTCCTGGCCTACTTCAAACAGCCAGTAGCAGCCACCAGAAGAGTTGTTTCCAGGCGGCTGATTATATGC
 ATGTGGCCTTAGGGTGTGGAAGAGAAGCTTACGCTCAGGAATCCAGACCTTCAATGCTACTGATGT
 GCTCACAGAACCAGCTGCGCTGTGTCCCAGGCCAGTGGTGTGCTCCTCAGGACCAGGTCGAGAAG
 TGCAGCAACAAATACCGAACTAACAGGGAGATGCAACAACAGGAGGAGACCCTGGCTGGGAGCTTCCA
 ACCAGGCCCTGGCCGCTGGTTACCAGCTGAGTATGAAGACCACAGGTCTCTCCCCTTCCGCTGGACCCC
 TGGCAAGAGGCGGAATGGCTTCTCCTCTTGTCCGGGCTGTCTCCAATCAGATTGTGCGCTTCCCC
 AGTAAGAAGCTGACCTCAGACCAGGGCCGGTCCCTCATGTTTCATGCAAGTGGGGCCAGTTCATCGACCATG
 ACTTGACTTACCCACAGTCCCAGCCAGAGTGACCTTCAACATGGGCGTGGACTGTGAGAAGACCTG
 TGCCAGCTGCCTCCCTGCTTCCCACATCAAGATACCACCAATGACCCCGCATCAAGAGCCAGCGAGAC
 TGCATCCCTTTCTCCGCTGTGCCCTGCGTGGCCCAAAACAGGAACAAGTCCGTAACCCAGATTAAC
 CGTTACATCCTTCGTGGACGCCAGCATGGTGTATGGCAGTGAGGTGTCCCTCGCCCTGCGACTTCGAAA
 TCGGACCAACTACCTGGGGCTCCTGGCCACTAACAGCAATCCAGGACAATGGCCGAGCCCTACTGCT
 TTCGACAACCTGCATGAGGACCTTGTCTCCTGACTAACCGATTAGTACGCATCCCGTCTTCTGGCAG
 GTGACAGTCGGCAAGTGAACCCCAAACTGGCGGCTTGCACACGCTATTTGTGAGAGAACACAATCG
 CCTAGCCACAGAGCTGAAGCGTCTGAATCCCCTGAGTGGAGTGGAGACAAGCTGTACAATGAAGCCCGAAG
 ATCGTGGGTGCCATGGTCCAGATCATCACCTACCAGACTTTCTGCCTCTGGTTCTGGGCAAGGCCCGGA
 TGAGAAGAACCTTGGGTCCCTACAGAGGGTACTGCTCCAACGTGGACCCCGCGTAGCCAATGTCTTAC
 CCTGGCTTCCGCTTCCGCCACACCATGCTGCAGCCCTCATGTTCCGTTTGGACAGCCAGTACCGGACC
 TCAGCACCAACTCCCACGTTCTGCTCAGCTCTGCTTTCTTCCGAGCTGGCGTATTGTATACGAAGGTG
 GCATCGACCCTATCCTCCGAGGTCTCATGGCCACCCAGCTAAGCTGAACCGCAAGATTCCATGCTGGT
 GGATGAGCTTCGGGACAAGTTGTTTTCAGCAAGTGAAGAAGATCGGGCTGGATCTGGCAGCTCTAAACATG
 CAGCGCAGCCGGACACGGGCTTCCAGGATACAATGCCTGGAGGCGCTTCTGTGGCCTTCCCAGCCCC
 GAAACTTAGCCCAGCTTAGTCCGGTGTAAAAAATCGGAATTTGGCAAGGAAGTTTCTGAACCTGTACAA
 GACGCCCGACAACATTGACATCTGGGTGGGAGCCATAGCAGAGCCTTCTTCCCGGGGGCCGAGTGGGG
 CCTCTTCTGGCTTGTCTTTTGAAGAACCAGTTCAGAAGAGCCCGAGACGGAGACAGATTCTGGTGGCAGA
 AATGGGGCGTTTTACCAAAAAGACAACGCAAGCCCTGAGGCGAATTTCTTTATCTCGGATTGTGTGCGA
 CAATACTGGCATCAGCACCGTTTCGAGGGACATCTTCAGGGCTAACATCTACCCACAGGGTTTTGTGAGC
 TGTAGCCGATTCCCAAGTTGAACCTGTCAGCCTGGCGAGGCAAA

ACGCGTACGCGGCCGCTCGAGCAGAACTCATCTCAGAAGAGGATCTGGCAGCAAATGATATCCTGGATT
 ACAAGGATGACGACGATAAGGTTTAA

Protein Sequence: >RR202953 representing NM_001107037
 Red=Cloning site Green=Tags(s)

MQLLLALLGVLATFILTQLAEGTVPAPPSPVENSVLQDCIAEAKLLVDTAYNRTQKSIVQRLQSGSASPM
 DLLAYFKQPVAATTRVVQAADYMHVALGLLEEKLPQESRPFNVDVLEPQLRLLSQASGCALQDQVEK
 CSNKYRTITGRCNNRRRPWL GASNQALARWLP AEYEDHRSLPFGWTPGKRRNGFLLPLVRAVSNQIVRFP
 SKKLTSDQGRSLMFMQWGQFIDHDLDFTPESPARVTFNMGVDCEKTC AQLPPCFPIKIPPNDPRIKSQRD
 CIPFFRSAPACPQNRNKVRNQINSLTSFVDASMYGSEVSLALRLRNRNTNYLGLLATNQFQDNGRALLP
 FDNLHEDPCLLTNRLVRIPCFLAGDSRASETPKLAALHTLVREHNRLATELKRLNPHWSGDKLYNEARK
 IVGAMVQIITYRDFLPLVLGKARMRRTLGPYRGYCSNVDPRVANVFTLAFRFGHTMLQPFFRLDSQYRT
 SAPNSHVLLSSAFFASWRIVYEGGIDPILRGLMATPAKLNQRDSMLVDEL RDKLFQQVRRIGLDLAALNM
 QRSRDHGLPGYNARRFCGLSQPRNLAQLSRVLKRNRLARKFLNLKTPDNIDIWVGAIAEPLLPGARVG
 PLLACL FENQFRRARDGDRFWQKGVFTKRQRKALRRI SL SRI VCDNTGISTVSRDIFRANIYPQGFVS
 CSRIPKLNLSAWRGK

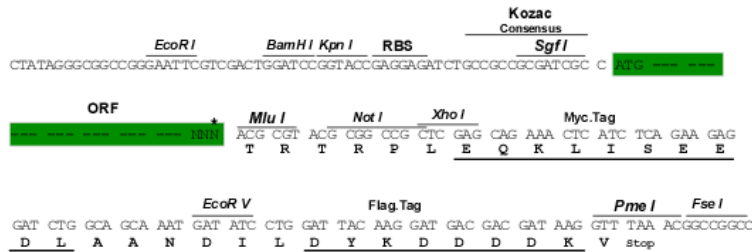
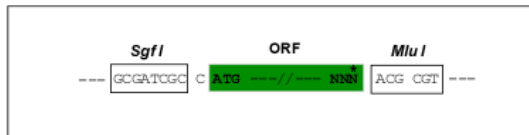
TRTRPLEQKLI SEEDLAANDILDYKDDDDKV

Restriction Sites:

Sgfl-MluI

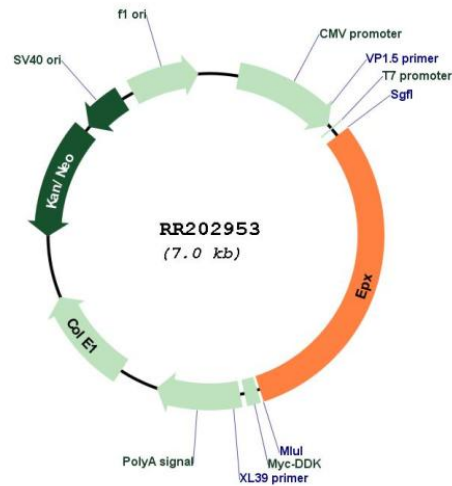
Cloning Scheme:

Cloning sites used for ORF Shuttling:



* The last codon before the Stop codon of the ORF

Plasmid Map:



ACCN: NM_001107037

ORF Size: 2145 bp

OTI Disclaimer: The molecular sequence of this clone aligns with the gene accession number as a point of reference only. However, individual transcript sequences of the same gene can differ through naturally occurring variations (e.g. polymorphisms), each with its own valid existence. This clone is substantially in agreement with the reference, but a complete review of all prevailing variants is recommended prior to use. [More info](#)

OTI Annotation: This clone was engineered to express the complete ORF with an expression tag. Expression varies depending on the nature of the gene.

Components: The ORF clone is ion-exchange column purified and shipped in a 2D barcoded Matrix tube containing 10ug of transfection-ready, dried plasmid DNA (reconstitute with 100 ul of water).

Reconstitution Method:

1. Centrifuge at 5,000xg for 5min.
2. Carefully open the tube and add 100ul of sterile water to dissolve the DNA.
3. Close the tube and incubate for 10 minutes at room temperature.
4. Briefly vortex the tube and then do a quick spin (less than 5000xg) to concentrate the liquid at the bottom.
5. Store the suspended plasmid at -20°C. The DNA is stable for at least one year from date of shipping when stored at -20°C.

RefSeq: [NM_001107037.1](#), [NP_001100507.1](#)

RefSeq Size: 2690 bp

RefSeq ORF: 2148 bp
Locus ID: 303414
Cytogenetics: 10q26
MW: 81.3 kDa