

## Product datasheet for **RR202944**

### Crebzf (NM\_001106279) Rat Tagged ORF Clone

#### Product data:

**Product Type:** Expression Plasmids  
**Product Name:** Crebzf (NM\_001106279) Rat Tagged ORF Clone  
**Tag:** Myc-DDK  
**Symbol:** Crebzf  
**Synonyms:** RGD1565584  
**Mammalian Cell Selection:** Neomycin  
**Vector:** pCMV6-Entry (PS100001)  
**E. coli Selection:** Kanamycin (25 ug/mL)  
**ORF Nucleotide Sequence:** >RR202944 representing NM\_001106279  
 Red=Cloning site Blue=ORF Green=Tags(s)

CTATAGGGCGCCCGGAATTCGTCGACTGGATCCGGTACCGAGGAGATCTGCCGCCGCGATCGCCGGCGC  
 GCC

ATGAGGCACAGCCTGACCAAGCTGCTGGCAGCCTCGGGCCGCGACTTCCCGAGCCGCCGCGACAGCCAGG  
 AGCCGCCCGCCACGCGCGCGCCTCCCCGGACCCGACTGGGGCAGCCGCGGGGACGGAGACGTCAAGGCC  
 CGGATCCCCTGACCGCGAGCAACCTCACGGGGACGGGGCGAGCCGGAGGCCCGAGGGGGAGTCCGCGC  
 AGCGTGGCCGTGCGCGCGCCCGCCCTCGCCACTGAAGATGGAGGAGGAGGAGGACCGCATCGCTA  
 TGGTCCCCAAGAAGAGCAGGAGGACATGGACTTCTCTCGGGCTGGAGCTGGCCGATCTGCTGGACCC  
 TCGGCAACCGGACTGGCACCTGGAGCCCGGCTCAGCTCGCCCGGCCCTGTCTCGTCCGGCGGAGGC  
 TCGGATAGTGGTGGCCTATTGAGGGGGACGACGACGAGACCGCGGCCGAGAGATGACAGCGCTTTT  
 CTGACTTGCTGCAGAGGCTGTTAAATGGCATCGGAGGCTGCAGCAGCGGCAGCGACCGCGCGCGGGGA  
 AAAGAGGCGGAGAAAGTCTCCGGGAGGAGGCGGTGGCACCAACGACAACAACCAAGCGACGACTAAGAGT  
 CCTCGAAGGCGGCGCGGCCGCTGCCGACTTAATCGGCTCAAGAAGAAGGAGTATGTGATGGGCTGG  
 AGAGTCGAGTCCGGGACTGGCAGCCGAGAACCAGGAGCTGCGGGCCGAGAATCGGGAGCTGGGCAAACG  
 GGTGCAAGCACTGCAGGAGGAGTCTACCTACGGGCTGTCTAGCCAACGAGACCGGACTGGCTCGC  
 CTGCTGAGCCGGCTGAGCGCGTGGGACTGCGGCTGACCACTTCACTCTCAGAGACTCGCCCGCGGTG  
 ACCATGACTACGCCCTGCCGTTGGGAAGCAGCCTCAGGAGCTGCTGGAAGAGGACGACCGCGCGGGAGG  
 AGTGTGTCTCCATGTGGACAAGGATAAGGTGTCCGTGGAGTTCTGCTCGGCGTGCCTCGAAGGCGTGC  
 TCTTCTTAAAATTTTCTTTTATAGG

ACGCGTACGCGGCCGCTCGAGCAGAACTCATCTCAGAAGAGGATCTGGCAGCAATGATATCCTGGATT  
 ACAAGGATGACGACGATAAGGTTAA



[View online »](#)

**Protein Sequence:** >RR202944 representing NM\_001106279  
Red=Cloning site Green=Tags(s)

MRHSLTKLLAASGRDFPSRRDSQEPPATRPPDPTGAAAGTETSRPGSPDREQPHGDGGEPEARRGSRG  
 SVAVRAPAPSPLKMEEEEEEDAIAMVPKEEQEDMDFLSGLELADLLDPRQPDWHLPEPLSSPGPLSSSGGG  
 SDSGGLLRGDDDETAAMQRFSDLLQRLNLGIGGCSSGSDRGGGKRRRSPGGGGTNDNNQATTKS  
 PRKAAAAARLNRLKKKEYVMGLESRVRLAAENQELRAENRELGKRQALQEESRYLRVLANETGLAR  
 LLSRLSGVGLRLTSLFRDSPAGDHDYALPVGKQPQELLEEDDAAGGVCLHVDKDKVSVFEFCACARKAS  
 SSLKIFFFR

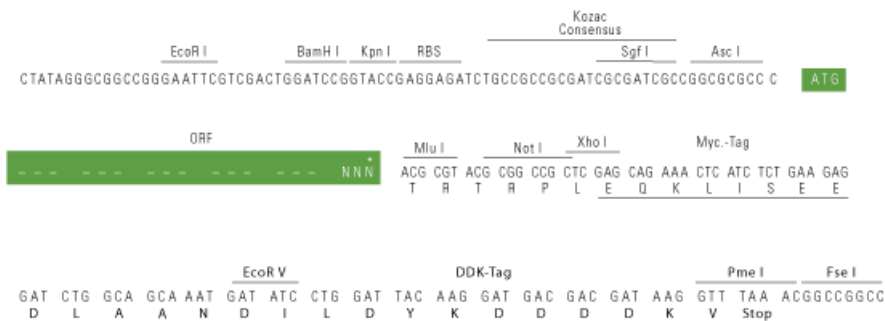
TRTRPLEQKLISEEDLAANDILDYKDDDDKV

**Restriction Sites:**

AscI-MluI

**Cloning Scheme:**

Cloning sites used for ORF Shuttling:



\* The last codon before the Stop codon of the ORF

**ACCN:** NM\_001106279

**ORF Size:** 1077 bp

**OTI Disclaimer:** The molecular sequence of this clone aligns with the gene accession number as a point of reference only. However, individual transcript sequences of the same gene can differ through naturally occurring variations (e.g. polymorphisms), each with its own valid existence. This clone is substantially in agreement with the reference, but a complete review of all prevailing variants is recommended prior to use. [More info](#)

**OTI Annotation:** This clone was engineered to express the complete ORF with an expression tag. Expression varies depending on the nature of the gene.

**Components:** The ORF clone is ion-exchange column purified and shipped in a 2D barcoded Matrix tube containing 10ug of transfection-ready, dried plasmid DNA (reconstitute with 100 ul of water).

**Reconstitution Method:**

1. Centrifuge at 5,000xg for 5min.
2. Carefully open the tube and add 100ul of sterile water to dissolve the DNA.
3. Close the tube and incubate for 10 minutes at room temperature.
4. Briefly vortex the tube and then do a quick spin (less than 5000xg) to concentrate the liquid at the bottom.
5. Store the suspended plasmid at -20°C. The DNA is stable for at least one year from date of shipping when stored at -20°C.

**RefSeq:** NM\_001106279.1, NP\_001099749.1

**RefSeq Size:** 1953 bp

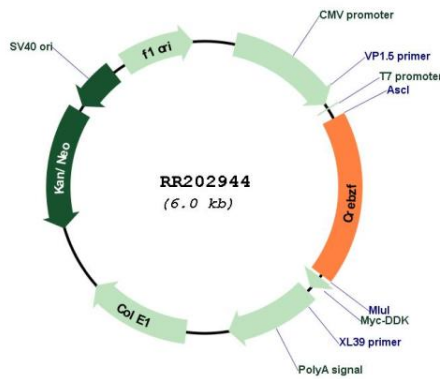
**RefSeq ORF:** 1080 bp

**Locus ID:** 293112

**Cytogenetics:** 1q32

**MW:** 38.3 kDa

**Product images:**



Circular map for RR202944