

Product datasheet for **RR202910**

Sh2d3c (NM_001108579) Rat Tagged ORF Clone

Product data:

Product Type:	Expression Plasmids
Product Name:	Sh2d3c (NM_001108579) Rat Tagged ORF Clone
Tag:	Myc-DDK
Symbol:	Sh2d3c
Vector:	pCMV6-Entry (PS100001)
E. coli Selection:	Kanamycin (25 ug/mL)
Cell Selection:	Neomycin



[View online »](#)

ORF Nucleotide Sequence:

>RR202910 representing NM_001108579
 Red=Cloning site Blue=ORF Green=Tags(s)

TTTTGTAATACGACTCACTATAGGGCGGCCGGAATTCGTCGACTGGATCCGGTACCGAGGAGATCTGCC
 GCC**CGATCGCC**

ATGACAGAAATGCCAAGAAAACAGGCAAAAAGTTCAAGTTCTTCAAGTTCAAGGGCTCGGGAGCCTTT
 CCAATCTCCCTCGTCTTTTCTCTGAGACGGTCTTCAAGCTCCCTAGCATCCGGTCTGTCCGGAGCC
 TGACACCTTTGAAGCCACACAGGATGACTTGGTGACACTCCCAAAGAGTCTCTGCCTATGACAGTTCC
 AGTGACATGTACAGCCACATGGGCACCATGCCCGCCCTAACATCAAGAAGGCTCAGAAAACAAAGGCTG
 TCCAGAAGGCCAGGAAGTCAAGCCGAGAATCCACCTGGTGTCTCGAGGGCTGCCAGAGCCACCAGACTT
 CGAGGCAGCCAAGGAGCGGAGAAGGAACTGAAACCCCACTGGAGGACACCACCTTCAGCAGTAGAA
 GTGGACCTATGAGGAACTCGCGGGCCTCACAGTAGACACAGCGGAGAAGCAAATCCCTGGGGATGCGT
 ACCCAGAAAGGGTGTGCAGAACTGGAGGCTGTGGGGACTATGTGAAGTTCTCAAGGAGAAGTACAT
 TCTCGACTCCTCGCCAGAGAAGTGCACAAGGAGCTGGAGGAAGAGCTGAAGCTCAGCAGTACAGACCTC
 CGCAGCCATGCCTGGTATCATGGACGTATCCCTCGTGAGGTCTCCGAGACCTGGTGCAGCGGAACGGCG
 ACTTCCTCATCCGTGACTCTCTACCAGTCTGGGGGACTATGTGCTCACGTGCCGCTGGCACAATCAGAC
 CTTGCACTTCAAGATCAACAAGGTGGTGGTGGAGGCTGGCGAGAGCTACACCCACATCCGGTACCTCTTC
 GAGCAGGAGAGCTTCGACCACGTGCCCGCCCTTGTGCGTATCATGTGGGCAGCCGTAAGGCCGTGTCCG
 AACAGAGTGGGGCCATCATCTACTGCCCGTCAACCGCACCTTCCCACTGCGCTACCTCGAGGCCAGCTA
 CGGCCTGAGCCAGGGCAGCAGCAAGGCTGCCAGCCAGCCAGCCCTCAGGCCCAAGGGCAGCCACATG
 AAAAGACGCAGCGTTACCATGACTGATGGGCTCACCTCTGACAAGGTACCCGCGGAGATGGTCCCCCA
 ACAGCACCTCACTACCCATCCTCGAGACTCCATCCGAAACTGCGCCCTCAGCATGGACCAGTCCGAGA
 TCTACACTCTCCGCTGTCTCCTATCTCCGAGAGTCCAGCTCCCTGCCTATAGCACCGTAACCCGCGTC
 CATGCTGCTTCTGCTGCCCCCTGTACAGCACAGCCCGCCTCCCAAGTTGCCCGCCGCTCCAGTGAACCTC
 AGCTATGTCTGGAGGTGCTCCAAAGCCTCCTGGGGAGTCAGACAGGGGCCCTCACGCAAGCCCGTCCCA
 CACCCTCTGCAAGGCCTCGCCATCACCGTCACTCAGCAGCTACAGTGACCCAGACTCTGGCCACTATTGT
 CAGCTCCAGCCTCCTGTGCGCTGTAGCCGAGAGCCGACAGCAGGAGAGACCCCCGGAAGGCTCGGAGCT
 CTGAGAGAGGCAAAAGGAACTGTCAGAAAATGGAGTCCCTGAGGGGAGTGGGGCAAGACCTTCACAGC
 CCCTGTAGCAGAACCCACCTCATCTTTCAACCTGGCTACCTTCCAGTCCCAGCTGATCCCAAGGAGAAC
 CGGCCTCTGGAGGTGGGCTGTGCGCAAAGTCAAGGAGCTGCTGTCGGAGGTGGATGCCCGGACGCTGG
 CCCGGCATGTACCAAGTTGACTGCCTGGTTGCTAGGATACTGGGCGTTACCAAGGAGATGCAGACCCCT
 AATGGGAGTCCGCTGGGGCATGGAGCTGCTCACCTCCCCATGGCCGGCAGCTAAGACAAGACCTGCTG
 GAAAGGTTCCACACCATGTCCATCATGCTGGCGGTGGATATCCTGGGCTGCACAGGCTCTGCGGAGGAGC
 GGGCGGCGCTGTGCACAAGACCATCCAGCTGGCAGCTGAGCTGCGGGGGACGATGGGCAACATGTTCA
 CTTGCTGCTGTATGGGCGCCCTGGAGATGGCCAGATTTCAAGGCTGGAGCAGACGTGGATGACTCTG
 CGGCAACGACACACGGAGGGTCCATTCTGTATGAGAAGAACTCAAGCCTTTCCTCAAGAGCCTGAACG
 AGGGCAAGAAGGCCCGCCATTGAGCAACACCTTTCCACACGTGCTGCCCTTATTACCCTGCTGGA
 GTGTGACTCCGCCCCGCGAGGGCCCTGAACCTTGGGGCAGCACAGAACATGGTGTGGAGGTTGTGTA
 GCCCACCTGGAGGCTGCCGCACTGTGGCACACCACGGGGCCTTACCACCAACGCTGAAGTCAAGC
 TGACGGGTTCCAGGCCGACCGGAGCTCCTGGAAGTGTTCAGCACAGAGTTCAGATGCGTCTCCTCTG
 GGGCAGCCAGGTTGCCAACAGCAGCCAGGCTGGCGCTATGAGAAGTTTGACAAAGTCTCACTGCCTTG
 TCCACAAGCTGGAACCTGCCATCCGCTCTAGTGAAGT

ACGCGTACGCGGGCCGCTCGAGCAGAAACTCATCTCAGAAGAGGATCTGGCAGCAAATGATATCCTGGATT
 ACAAGGATGACGACGATAAGGTTTAA

Protein Sequence: >RR202910 representing NM_001108579
Red=Cloning site Green=Tags(s)

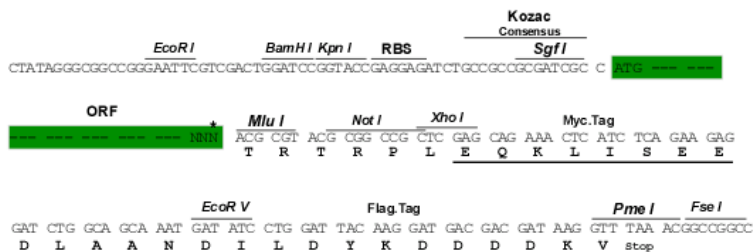
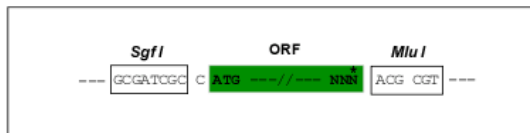
MTEMPKKTGKKKFFKFKGLGSLNLPFSFLRRSSASPSIRSCPEPDTFEATQDDLVTLPKSPPAYARS
SDMYSHMGTMPRPNIKKAQKQKAVQKAQEVSRSHLVSRLPEPPDFEAAKEAEKGTETPLEDTTPSAVE
VDPMRKLAGLTVDTAEKQIPGDAYPERAAAELEAAGDYVKFSKEKYILDSSPEKLHKELEELKLSSTDL
RSHAWYHGRIPREVSETLVQRNGDFLIRDSL TSLGDYVL TCRWHNQTLHFKINKVVVEAGESYTHIRYLF
EQESFDHVPALVRYHVGSRKAVSEQSGAIYCPVNRTFPLRYLEASYGLSQGSSKAASPSPSGPKGSHM
KRRSVTMTDGLTSDKVTRGDGCPNSTSLPHPRDSIRNCALSMQIPDLHSPLSPISESPSSPAYSTVTRV
HAASAAPCTAQASPVARRSSEPQLCPGGAPKPPGESDRGPHASPSHTLCKASPSLSYSDPDSGHYC
QLQPPVRCBREPTAGETPRKARSSAERQKELSENGVPEGEWGKTF TAPVAEATSSFNLATFQSQIPKEN
RPLEVGLLRKVKELLSEVDARTLARHVTKVDCLVARILGVTKEMQTLMGVRWGMELLTLPHGRLRQDLL
ERFHTMSIMLAVDILGCTGSAEERAALLHKTIQLAAELRGTGMNMFSAAVMGALEMAQISRLEQTWMTL
RQRHTEGAILYEKLLKPFLLKSLNEGKEGPPLSNTTFPHVLPFITLLECDSPAEGPEPWGSTEHGVEVVL
AHLEAARTVAHHGGLYHTNAEVKLQGFQARPELLEVFSTEFQMRLWGSQGANSSQAWRYEKFDKVL TALA
SHKLEPAIRSSEL

TRTRPLEQKLI SEEDLAANDILDYKDDDDKV

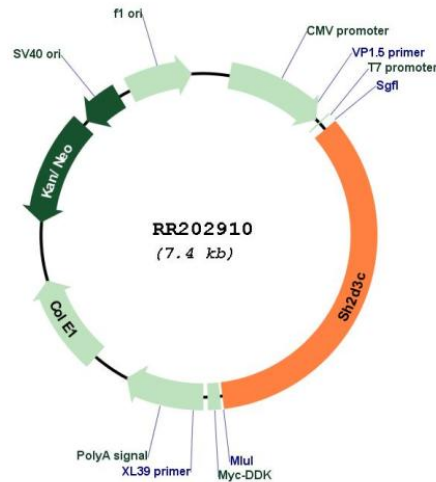
Restriction Sites: Sgfl-MluI

Cloning Scheme:

Cloning sites used for ORF Shutting:



* The last codon before the Stop codon of the ORF

Plasmid Map:


ACCN: NM_001108579

ORF Size: 2559 bp

OTI Disclaimer: The molecular sequence of this clone aligns with the gene accession number as a point of reference only. However, individual transcript sequences of the same gene can differ through naturally occurring variations (e.g. polymorphisms), each with its own valid existence. This clone is substantially in agreement with the reference, but a complete review of all prevailing variants is recommended prior to use. [More info](#)

OTI Annotation: This clone was engineered to express the complete ORF with an expression tag. Expression varies depending on the nature of the gene.

Components: The ORF clone is ion-exchange column purified and shipped in a 2D barcoded Matrix tube containing 10ug of transfection-ready, dried plasmid DNA (reconstitute with 100 ul of water).

Reconstitution Method:

1. Centrifuge at 5,000xg for 5min.
2. Carefully open the tube and add 100ul of sterile water to dissolve the DNA.
3. Close the tube and incubate for 10 minutes at room temperature.
4. Briefly vortex the tube and then do a quick spin (less than 5000xg) to concentrate the liquid at the bottom.
5. Store the suspended plasmid at -20°C. The DNA is stable for at least one year from date of shipping when stored at -20°C.

RefSeq: [NM_001108579.1](#), [NP_001102049.1](#)

RefSeq Size: 3078 bp

RefSeq ORF: 2562 bp

Locus ID: 362111

Cytogenetics: 3p11

MW: 94 kDa