

Product datasheet for **RR202878**

Eef2 (NM_017245) Rat Tagged ORF Clone

Product data:

Product Type:	Expression Plasmids
Product Name:	Eef2 (NM_017245) Rat Tagged ORF Clone
Tag:	Myc-DDK
Symbol:	Eef2
Synonyms:	Ef-2
Vector:	pCMV6-Entry (PS100001)
E. coli Selection:	Kanamycin (25 ug/mL)
Cell Selection:	Neomycin



[View online »](#)

**ORF Nucleotide
Sequence:**

>RR202878 representing NM_017245
 Red=Cloning site Blue=ORF Green=Tags(s)

TTTTGTAATACGACTCACTATAGGGCGGCCGGAATTCGTCGACTGGATCCGGTACCGAGGAGATCTGCC
 GCC**CGCATCGCC**

ATGGTGAACCTCACAGTAGATCAGATCCGTGCCATCATGGACAAGAAAGCCAACATCCGGAACATGTCAG
 TCATCGCTCACGTGGACCACGGCAAGTCCACGTTGACCGACTCCCTTGTGTGCAAGGCTGGCATCATCGC
 CTCTGCCCGAGCCGGGAGACACGCTTCACTGACACTCGAAAGGATGAGCAGGAGCGCTGCATCACCATC
 AAGTCCACTGCCATCTCCCTCTTCTATGAGCTCTCCGAGAACGACCTGAACCTCATTAAAGCAGAGCAAGG
 ATGGCTCGGGCTTCTCATCAACCTCATTGACTCTCCAGGTCATGTGGACTTCTCCTCAGAGGTGACCCG
 TGCTCTGCGTGTCACTGATGGAGCACTGGTGGTGGTGGACTGTGTGTCTGGTGTCTGTGTGCAGACAGAG
 ACAGTGTGCGGCAGGCCATCGCTGAGCGCATCAAGCCCGTGTGATGATGAACAAGATGGACCGGGCCC
 TGCTGAACTGCAACTGGAGCCTGAGGAGCTCTACCAGACCTCCAGCGCATCGTGAGAACGTCAATGT
 CATCATCTCCACCTATGGCGAGGGCGAGAGTGGACCCATGGGCAATATCATGATCGATCCTGTCTGGGC
 ACTGTAGGCTTTGGCTCTGGCCTGCATGGTGGGCCTTACACTGAAGCAGTTTGCAGAGATGTATGTGG
 CCAAGTTTGCAGCCAAGGGTGAAGGCCAGCTGGGTGCAGCTGAGCGGGCCAAGAAGGTAGAAGACATGAT
 GAAGAAGCTGTGGGGAGACCCGTAATTTGACCCGGCCAACGGCAAGTTTCAAGCAAGTCAAGCAATAGCCCA
 GACGGGAAGAACTTCCCGCACCTTCTGCCAGCTCATCTTGGACCCCATCTTCAAGGTGTTTATGATGCCA
 TCATGAACTTCAAGGAGGAGACAGCAAGCTGATCGAGAAGCTGGACATCAAGCTGGACAGTGAAGGA
 CAAGGACAAGGAGGGCAAACACTGCTGAAGGCTGTGATGCGTCGCTGGTGCCTGCTGGTGACGCCCTG
 CTACAGATGATCACCATCCACTTGGCGTCCCGGTCACTGCACAGAAGTACCGTTGTGAGCTGCTGTACG
 AGGGCCCACTGATGACGAGGGCCCATGGGATTAAGAGCTGCGACCCAAAGGCCCTTAAATGATGTA
 CATCTCCAAGATGGTGCCAAACATCTGACAAAGGCCGCTTCTATGCCTTCGGTAGAGTGTTCTCTGGGGTG
 GTGTCCACAGGTCTGAAGGTCCGGATCATGGGCCCAACTATACCTGGGAAGAAGGAGGACCTGTACC
 TGAAGCCTATCCAGAGGACCACTTCTGATGATGGGCCGCTATGTGGAACCCATTGAGGATGTGCCCTGTGG
 CAACATTGTGGGGTTGGTGGGGTGGACAGTTCTTGTGAAGACCGGCACCATCACTACCTTTGAGCAC
 GCTCACAACATGCGGGTGTGAAGTTCAGCGTCAGCCCTGTCGTCAGGGTGGCAGTGGAGGCCAAGAACC
 CAGCTGACCTGCCAAGCTGGTGGAGGGGCTGAAGCGGCTGGCTAAGTCTGACCCATGGTGCAGTGCAT
 CATCGAGGAGTCTGGGGAGCACATATTGCTGGTGTGGAGAGCTGCACCTGGAGATCTGCCTTAAGGAC
 CTGGAGGAGGACCATGCCTGCATCCCCATCAAGAAATCTGACCCGTGTCGTCTACCGGGAGACAGTCA
 GTGAGGAGTCCAACGTGCTCTGTCTTCCAAGTCCCAAAACAAGCACAACAGGCTGTACATGAAGGCCAG
 GCCCTTCCCTGATGGCCTAGCAGAGGACATCGATAAAGGGTGAAGTATCTGCCCGCCAGGAGCTCAAGGCC
 CGTGCCCGTTACCTGGCCGAAAAGTATGAGTGGGATGTTGCTGAAGCCCGCAAGATCTGGTGTCTTTGGAC
 CTGATGGCACTGGTCCCAACATTCTCACCGACATCACCAGGGTGTGCAGTACCTGAATGAGATCAAGGA
 CAGTGTGGTGGCTGGATTCCAGTGGGCCACTAAGGAGGGTGTCTTTGTGAGGAGAACATGCGTGGTGTG
 CGATTTGATGTCCATGATGTGACCCTGCATGCTGATGCCATCCACCGAGGAGGTGGTGCAGATCATCCCCA
 CAGCGCGCCGCTGCCTCTATGCCAGTGTGCTGACTGCACAGCCCGCCTCATGGAGCCTATCTACCTGGT
 GGAGATTCAGTGTCTGAGCAAGTGGTGGGCGGAATCTATGGTGTCTGAACAGGAAGCGTGGCCATGTC
 TTTGAGGAGTCCCAGGTAGCTGGGACCCCATGTTCTGTGGTCAAGGCCTACCTGCCTGCAATGAATCCT
 TTGGCTTCACTGCCGACCTTCGATCCAACACTGGTGGCCAGGCCTTCCCCAGTGTGTGTTTGACCACTG
 GCAGATCCTGCCTGGGACCCCTTTGACAACAGCAGCCGCCCCAGCCAAGTTGTAGCTGAGACCCGCAAG
 CGCAAAGGCTGAAGGAGGGCATCCAGCGCTGGACAACCTTCTGGACAAACTG

ACGCGTACGCGGCCGCTCGAGCAGAACTCATCTCAGAAGAGGATCTGGCAGCAATGATATCCTGGATT
 ACAAGGATGACGACGATAAGGTTTAA

Protein Sequence: >RR202878 representing NM_017245
Red=Cloning site Green=Tags(s)

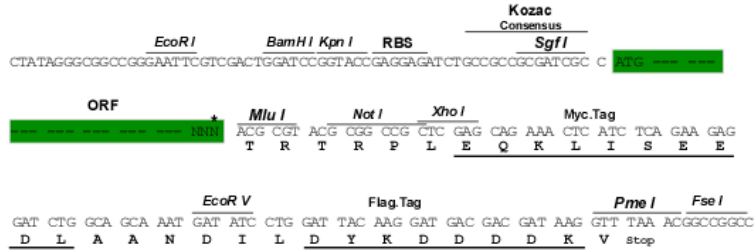
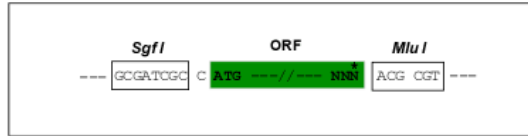
MVNFTVDQIRAIMDKKANIRNMSVIAHVDHGKSTLTDSLVCAGIIASARAGETRFTDTRKDEQERCITI
KSTAIISLFYELSENDLNFIKQSKDGSGLINLIDSPGHVDFSSEVTAALRVTDGALVVVDCVSGVCVQTE
TVLRQAI AERIKPVLMMNKMDRALLELQLEPEELYQTFQRIVENVNVIIISTYGESESGPMGNIMIDPVLG
TVGFGSGLHGWAFTLKQFAEMYVAKFAAKGEGQLGAAERAKKVEDMMKKLWGDYFDPANGKF SKSANS
DGKKLPRTFCQLILDPIFKVFDAIMNFRKEETAKLIEKLDIKL DSEDKDKEGKPLLKAVMRRWLPAGDAL
LQMITIHL PSPVTAQKYRCELLYEGPPDDEAAMGIKSCDPKGPLMMYISKMVPTSDKGRFYAFGRVFSGV
VSTGLKVRIMGPNYTPGKKEDLYLKPIQRTILMMGRYVEPIEDVPCGNIVGLVGVQDFLVTGTITTFEH
AHNMRVMKFSVSPVVRVAEAKNPADLPKLVEGLKRLAKSDPMVQCIIEESGEHIIAGAGELHLEICLKD
LEEDHACIPIKSDPVVSYRETVSEESNVLCLSKSPNKHNL YMKARPPDGLAEDIDKGEVSARQELKA
RARYLAEKYEWDVAEARKIWCFGPDGTGNILTDITKGVQYLNEIKDSVVAGFQWATKEGALCEENMRGV
RFDVHDVTLHADAIHRGGGQIIP TARRCLYASVLT AQPRLMEPIYLVEIQCEQVVGGIYGV LNRKRGHV
FEESQVAGTPMFVVKAYLPVNESFGFTADLR SNTGGQAF PQCVDHWQILPGDPFDNSSRPSQVVAETRK
RKGLKEGIPALDNFLDKL

TRTRPLEQKLISEEDLAANDILDYKDDDDKV

Restriction Sites: Sgfl-Mlul

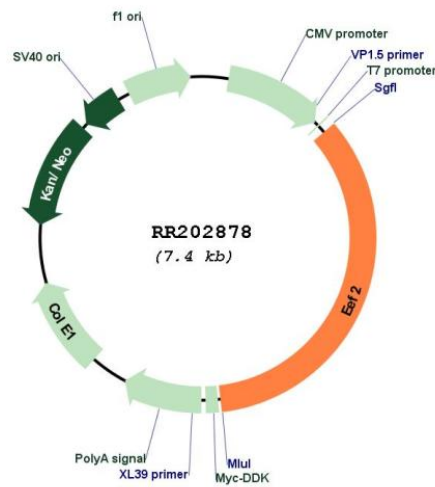
Cloning Scheme:

Cloning sites used for ORF Shuttling:



* The last codon before the Stop codon of the ORF

Plasmid Map:



ACCN:	NM_017245
ORF Size:	2574 bp
OTI Disclaimer:	The molecular sequence of this clone aligns with the gene accession number as a point of reference only. However, individual transcript sequences of the same gene can differ through naturally occurring variations (e.g. polymorphisms), each with its own valid existence. This clone is substantially in agreement with the reference, but a complete review of all prevailing variants is recommended prior to use. More info
OTI Annotation:	This clone was engineered to express the complete ORF with an expression tag. Expression varies depending on the nature of the gene.
Components:	The ORF clone is ion-exchange column purified and shipped in a 2D barcoded Matrix tube containing 10ug of transfection-ready, dried plasmid DNA (reconstitute with 100 ul of water).
Reconstitution Method:	<ol style="list-style-type: none">1. Centrifuge at 5,000xg for 5min.2. Carefully open the tube and add 100ul of sterile water to dissolve the DNA.3. Close the tube and incubate for 10 minutes at room temperature.4. Briefly vortex the tube and then do a quick spin (less than 5000xg) to concentrate the liquid at the bottom.5. Store the suspended plasmid at -20°C. The DNA is stable for at least one year from date of shipping when stored at -20°C.
RefSeq:	NM_017245.2 , NP_058941.1
RefSeq Size:	2944 bp
RefSeq ORF:	2577 bp
Locus ID:	29565
UniProt ID:	P05197
Cytogenetics:	7q11
MW:	95.3 kDa
Gene Summary:	catalyzes the translocation of peptidyl-tRNA from the ribosomal A site to the P site in translational elongation [RGD, Feb 2006]