

Product datasheet for **RR202868**

Ddx39a (NM_053563) Rat Tagged ORF Clone

Product data:

Product Type:	Expression Plasmids
Product Name:	Ddx39a (NM_053563) Rat Tagged ORF Clone
Tag:	Myc-DDK
Symbol:	Ddx39a
Synonyms:	Ddx39; Ddxl
Vector:	pCMV6-Entry (PS100001)
E. coli Selection:	Kanamycin (25 ug/mL)
Cell Selection:	Neomycin
ORF Nucleotide Sequence:	>RR202868 representing NM_053563 Red=Cloning site Blue=ORF Green=Tags(s)

TTTTGTAATACGACTCACTATAGGGCGCCGGAATTCGTCGACTGGATCCGGTACCGAGGAGATCTGCC
GCC**CGATCGCC**

ATGGCAGAACAGGATGTGGAAAATGAGCTTTTGGATTATGATGAAGATGAAGAGCCCCAGGTACCCAGG
AGAGCACTCCAGCTCCCCGAAGAAAGATGTCAAAGGATCTTATGTCTCCATCCACAGTTCTGGCTTCCG
GGACTTTCTGCTGAAGCCGGAGCTCCTGAGAGCTATAGTTGACTGTGGCTTTGAACATCCTTCAGAGGTC
CAGCATGAATGTATTCCCAGGCCATTCTGGGTATGGATGTCCTGTGCCAAGCCAAGTCTGGGATGGGCA
AGACAGCTGTGTTTGTGCTGGCCACCCTGCAGCAGATTGAACCCATCAATGGCCAGGTATCAGTACTGGT
CATGTGCCACACAAGGGAGCTGGCCTTCCAGATCAGCAAGGAGTATGAGCGCTTCTCGAAGTACATGCC
AGTGTCAAGGTATCTGTGTTCTTTGGAGGCCTCTCCATTAAGAAAGATGAAGATGTGTTAAAGAAGAACT
GTCCCATGTTGTGGTGGGACACCAGGCCGATCCTGGCCCTCGTGGGAGCAGGAGCCTCAACCTGAG
GAATGTGAAGCACTTTGTGCTAGATGAATGTGACAAGATGCTGGAACAGCTGGACATGCCCGGGATGTA
CAGGAGATCTTTGCTGACACCCATGAGAAGCAATGTATGATGTTGAGCGCCACCTGAGCAAGGAGA
TCCGGCCAGTCTGCAGGAAGTTCATGCAGGATCCTATGGAGGTGTTTGTGACGACGAGACCAAGCTCAC
ACTGCATGGGCTGCAGCAGTATTACGTCAAACCAAGGACAGTGAGAAGAATCGTAAACTCTTCGACCTC
CTTGACGTGCTAGAGTTTAAACCAGTGGTATCTTTGTCAAGTCTGTGCAGCGCTGCATGGCCCTGGCCC
AGCTCCTAGTGGAACAGAAATTTCCGGCTATCGCTATTCACAGAGGCATGGCCCAGGAGGAGCGCTGTC
CCGATACCAGCAGTTCAAGGACTTCCAGCGTCGCATCCTAGTGGCTACTAATCTGTTTGGCAGAGGCATG
GACATTGAGAGAGTCAACATCGTCTTCAACTATGACATGCCAGAGGACTCGGATACCTACCTGCACCGAG
TGGCTCGTGGTTCGCTTTGGTACCAAGGTCTGGCAGTCACTTTTGTGTCAGATGAGAATGATGCCAA
AATCCTTAATGACGTTTCAGGACCGGTTTGAAGTGAATGTGGCTGAGCTTCCAGAAGAAATAGATATCTCC
ACATACATTGAGCAGAGCCGG

ACGCGTACGCGGCCGCTCGAGCAGAAACTCATCTCAGAAGAGGATCTGGCAGCAAATGATATCCTGGATT
ACAAGGATGACGACGATAAGGTTTAA



[View online »](#)

Protein Sequence: >RR202868 representing NM_053563
Red=Cloning site Green=Tags(s)

MAEQDVENELLDYDEDEEPQVPQESTPAPPKDVKGSYVSIHSSGFRDFLLKPELLRAIVDCGFHPSEV
 QHECIPQAILGMDVLCQAKSGMGKTAVFVLA TLQQIEP INGQVSVL VMCHTRELAFQISKEYERFSKYMP
 SVKVSVFFGGLSIKKDEVDLKKNCPHVVVGTGPRILALVRSRSLNLRNVKHFVLD ECDKMLEQLDMRRDV
 QEIFRLTPHEKQCMMF SATLSKEIRPVC RKF MQDPMEVFV DDETKL TLHGLQQYVVKLKDSEKNRKLFDL
 LDVLEFNQVYVIFVKS VQRCMALAQLLVEQNFPAIAIHRGMAQEERLSRYQQFKDFQRRILVATNLFGRGM
 DIERNIVFNYPEDSDTYLHRVARAGRFGTKGLAVTFVSDENAKILNDVQDRFEVNV AELPEEIDIS
 TYIEQSR

TRTRPLEQKLISEEDLAANDILDYKDDDDKV

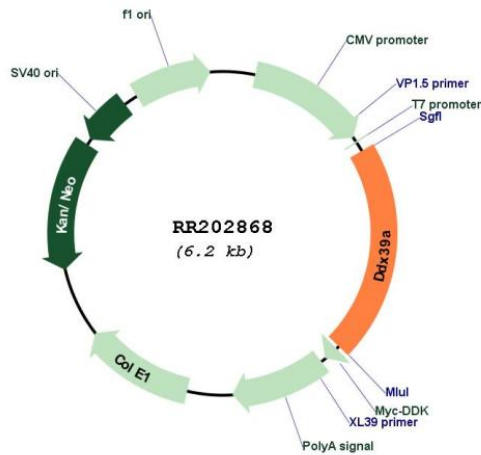
Restriction Sites:

SgfI-MluI

Cloning Scheme:



Plasmid Map:



ACCN:

NM_053563

ORF Size:	1281 bp
OTI Disclaimer:	The molecular sequence of this clone aligns with the gene accession number as a point of reference only. However, individual transcript sequences of the same gene can differ through naturally occurring variations (e.g. polymorphisms), each with its own valid existence. This clone is substantially in agreement with the reference, but a complete review of all prevailing variants is recommended prior to use. More info
OTI Annotation:	This clone was engineered to express the complete ORF with an expression tag. Expression varies depending on the nature of the gene.
Components:	The ORF clone is ion-exchange column purified and shipped in a 2D barcoded Matrix tube containing 10ug of transfection-ready, dried plasmid DNA (reconstitute with 100 ul of water).
Reconstitution Method:	<ol style="list-style-type: none">1. Centrifuge at 5,000xg for 5min.2. Carefully open the tube and add 100ul of sterile water to dissolve the DNA.3. Close the tube and incubate for 10 minutes at room temperature.4. Briefly vortex the tube and then do a quick spin (less than 5000xg) to concentrate the liquid at the bottom.5. Store the suspended plasmid at -20°C. The DNA is stable for at least one year from date of shipping when stored at -20°C.
RefSeq:	NM_053563.2 , NP_446015.2
RefSeq Size:	1740 bp
RefSeq ORF:	1284 bp
Locus ID:	89827
UniProt ID:	Q5U216
Cytogenetics:	19q11
MW:	49.1 kDa
Gene Summary:	Involved in pre-mRNA splicing. Required for the export of mRNA out of the nucleus (By similarity).[UniProtKB/Swiss-Prot Function]