

## Product datasheet for **RR202867**

### Chst15 (NM\_173310) Rat Tagged ORF Clone

#### Product data:

Product Type:	Expression Plasmids
Product Name:	Chst15 (NM_173310) Rat Tagged ORF Clone
Tag:	Myc-DDK
Symbol:	Chst15
Synonyms:	Galnac4s-6st; GalNAc4S6ST
Vector:	pCMV6-Entry (PS100001)
E. coli Selection:	Kanamycin (25 ug/mL)
Cell Selection:	Neomycin



[View online »](#)

**ORF Nucleotide Sequence:**

>RR202867 representing NM\_173310  
 Red=Cloning site Blue=ORF Green=Tags(s)

TTTTGTAATACGACTCACTATAGGGCGGCCGGAATTCGTCGACTGGATCCGGTACCGAGGAGATCTGCC  
 GCC**CGCATCGCC**

ATGAGGCACTGCATTAATTGCTGCATACAGCTGTTCCCGAAGACGCACACAACAGCAGGTTGCCTGCC  
 AAGGAGGCCCCATCACAGTCATCAGGCGTGCCCAAGTTGCAAAGGAGAAGACAAAATTCGTTCCGGGT  
 GGACAGTAAGCAGATGAACCTGCTTGTCTCGAAGTGAGGACTGAGGGCAACGAAAACCTGGGGCGGG  
 TTTTTCGCTTCAGGAAAGGGAAGCGATGTAGCCTGGTCTTTGGATTGATAATAATGACCTTGGTATGG  
 CTTCTTACATCCTTCCGGGGCTCATCAGGAACCTCTAATTTTATCCCTTTCCATTATGGGGGCTTTCC  
 CAGCAACCCAGCGTGATGGACAGTGAGAGCCCTAGTGATGTGAAAGAGCATCACTACCAGCCTTCGGTA  
 AATAACATCTCCTATGTGAAGGATTATCCCAACATTAACCTGATTATTGACAGCATCGTGCCAGGAATG  
 AGTTCACAACAGGAGCTCCCGACTTACAAGATCTCAAGAGACAAGAGTTGCACATGTTTTCTGTGAT  
 CCCCATAAATTCCTTCCGACTAGCAAGAGCCCTTGTGGTATGAGGAATTCTCCGGCAGGAACACCACT  
 GACCCCTACCTGACCAATTCCTACGTGCTCTACTCCAAGCGCTTCCGCTCTACCTTTGACTCTGCGAA  
 AGGCTTTCTGGGGCCACCTGTCCATGTGCATGGCAAGCATTTCGCTGCGCTGCTGCCACACTTCTA  
 CATCATTGGGCGAGCCCAAGTGGGAACCACTGACCTCTATGACCGCTTCCGGTGCATCCAGAAGTGAAA  
 TTCTCAGCCATCAAGGAGCCCACTGGTGGACCCGGAAGCGCTTGGAAATTGTCGCTGAGGGATGGGC  
 TACGAGACCGCTACCTGTGGAAGATTACCTGGACCTCTTTGACTTGGCTGCACACCAGATCCATCAAGG  
 ACTGCAGGCTGCCTCTGCAGAGCAGACGAGCAAGATGAATAGGATCATTATCGGAGAGCCAGCGCCTCT  
 ACAATGTGGGATAACAATGCCTGGACCTTCTTCTATGACAACAGCACAGACGGCGAGCCACCGTTCTGA  
 CCCAAGACTTCAATCCATGCCTTTGAGCTGAAAGCAAGCTCCTTGTGCTCAGGGATCCCGTGGAGAG  
 GTTGTACTCAGACTATCTACTTTGCAAGTTCAAATAAATCCGCGATGACTTCCACGAGAAGGTGACG  
 GAGGCTCTGCAGCTGTTTAAAATTGCATGCTGGATTATTCACTGCGCGCTGCGTCTACAACAACCC  
 TGAACAATGCCATGCCGTGAGGCTCCAGGTCGGTCTGTATGCTGTATCTCCTGGACTGGCTCACTGT  
 CTTCAAGTAAAGGAGCAGTTCCTCATTCTACGTCTGGAAGACCATGCATCCAATGTCAAGTACACCATGCAC  
 AAGGTCTTCCAGTTTCTAAACCTGGGGCTCTAAGTGAGAAGCAAGAAGCTTTGATGACCAAGAGCCCCG  
 CGTCCAACACACGGCGTCTGAGGATCGTAGTCTGGGACCCATGTGGCCGATCACTCAGAAGATCTGCG  
 GGACTTCTACGGCCTTCAACACAAGGCTGGCACAGGCTCTGGATGATGAGGCGTTTTCGTTGGAAGACG  
 ACG

**ACGCGT**ACGCGGGCCGCTCGAGCAGAAACTCATCTCAGAAGAGGATCTGGCAGCAAATGATATCCTGGATT  
 ACAAGGATGACGACGATAAGGTTTAA

**Protein Sequence:**

>RR202867 representing NM\_173310  
 Red=Cloning site Green=Tags(s)

MRHCINCCIQLFPEDAHKQVACQGGPHSHQACPSCKGEDKILFRVDSKQMNLLAVLEVRTEGNENWGG  
 FLRFRKGRKCSLVFGLIIMTLVMASYILSGAHQELLISSPFHYGGFSPNSVMDSESPSDVKEHHYQPSV  
 NNISYVKDYPNIKLIIDSLAARNEFTTRQLPDLQDLKRQELHMFVSVIPNKFLPTSKSPCWYEEFSGRNTT  
 DPYLTNSYVLYSKRFRSTFDLTKAFWGHLSHVHGKHFRRLRCLPHFYIIGQPKCGTTDLYDRLRLHPEVK  
 FSAIKEPHWWTRKRFIVRLRDGLRDRYPVEDYLDLFDLAAHQIHQGLQAASAEQTSKMNRIIIGEASAS  
 TMWDNNAWTFYDNSTDGEPFLTQDFIHAFQPEAKLLVMLRDPVERLYSDYLYFASSNKSADDFHEKVT  
 EALQLFENCMLDYSLRACVYNNLNNAMPVRLQVGLYAVYLLDWLTVFSKEQFLILRLEDHASNVKVTMH  
 KVFQFLNLGPLSEKQALMTKSPASNTRRPEDRSLGPMWPIQKILRDFYGFNTRLAQVLDDEAFAWKT  
 T

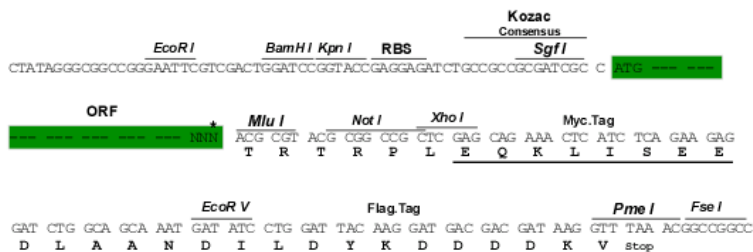
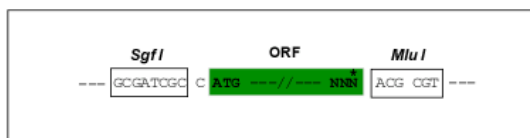
**TRTRPLEQKLI**SEEDLAANDILDYKDDDDKV

**Restriction Sites:**

SgfI-MluI

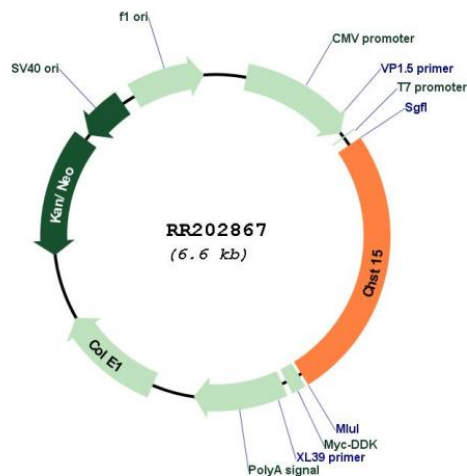
**Cloning Scheme:**

Cloning sites used for ORF Shuttling:



\* The last codon before the Stop codon of the ORF

**Plasmid Map:**



ACCN: NM\_173310  
 ORF Size: 1683 bp

<b>OTI Disclaimer:</b>	The molecular sequence of this clone aligns with the gene accession number as a point of reference only. However, individual transcript sequences of the same gene can differ through naturally occurring variations (e.g. polymorphisms), each with its own valid existence. This clone is substantially in agreement with the reference, but a complete review of all prevailing variants is recommended prior to use. <a href="#">More info</a>
<b>OTI Annotation:</b>	This clone was engineered to express the complete ORF with an expression tag. Expression varies depending on the nature of the gene.
<b>Components:</b>	The ORF clone is ion-exchange column purified and shipped in a 2D barcoded Matrix tube containing 10ug of transfection-ready, dried plasmid DNA (reconstitute with 100 ul of water).
<b>Reconstitution Method:</b>	<ol style="list-style-type: none"><li>1. Centrifuge at 5,000xg for 5min.</li><li>2. Carefully open the tube and add 100ul of sterile water to dissolve the DNA.</li><li>3. Close the tube and incubate for 10 minutes at room temperature.</li><li>4. Briefly vortex the tube and then do a quick spin (less than 5000xg) to concentrate the liquid at the bottom.</li><li>5. Store the suspended plasmid at -20°C. The DNA is stable for at least one year from date of shipping when stored at -20°C.</li></ol>
<b>RefSeq:</b>	<a href="#">NM_173310.3</a> , <a href="#">NP_775432.3</a>
<b>RefSeq Size:</b>	1701 bp
<b>RefSeq ORF:</b>	1686 bp
<b>Locus ID:</b>	286974
<b>UniProt ID:</b>	<a href="#">Q8CHI9</a>
<b>Cytogenetics:</b>	1q41
<b>MW:</b>	65 kDa
<b>Gene Summary:</b>	Sulfotransferase that transfers sulfate from 3'-phosphoadenosine 5'-phosphosulfate (PAPS) to the C-6 hydroxyl group of the GalNAc 4-sulfate residue of chondroitin sulfate A and forms chondroitin sulfate E containing GlcA-GalNAc(4,6-SO(4)) repeating units. It also transfers sulfate to a unique non-reducing terminal sequence, GalNAc(4SO4)-GlcA(2SO4)-GalNAc(6SO4), to yield a highly sulfated structure similar to the structure found in thrombomodulin chondroitin sulfate. May also act as a B-cell receptor involved in BCR ligation-mediated early activation that mediate regulatory signals key to B-cell development and/or regulation of B-cell-specific RAG expression; however such results are unclear in vivo (By similarity). [UniProtKB/Swiss-Prot Function]