

Product datasheet for **RR202859**

Myog (NM_017115) Rat Tagged ORF Clone

Product data:

Product Type: Expression Plasmids
Product Name: Myog (NM_017115) Rat Tagged ORF Clone
Tag: Myc-DDK
Symbol: Myog
Vector: pCMV6-Entry (PS100001)
E. coli Selection: Kanamycin (25 ug/mL)
Cell Selection: Neomycin
ORF Nucleotide Sequence: >RR202859 representing NM_017115
Red=Cloning site Blue=ORF Green=Tags(s)

TTTTGTAATACGACTCACTATAGGGCGGCCGGAATTCGTCGACTGGATCCGGTACCGAGGAGATCTGCC
GCC**CGATCGCC**

ATGGAGCTGTATGAAACATCCCCCTATTCTACCAGGAGCCCCACTTCTATGACGGGAAAACCTACCTTC
CTGTCCACCTTCAGGGCTTCGAGCCCCGGGCTATGAGCGGACCGAGCTCAGCTTAAGCCCAGGAGCCCG
AGGGCCCCTAGAAGAGAAGGGACTGGGGACCCCTGAGCATTGTCCAGGCCAGTGCCTGCCCTGGGCGTGT
AAGGTGTGTAAGAGGAAGTCTGTGTCTGTGGACCGCGGAGGGCAGCCACACTGAGGAGAGAAGCGCAGGC
TCAAGAAAGTGAATGAGGCCTTCGAGGCTCTGAAGAGAAGCACCCCTGCTCAACCCCAACAGCGGCTGCC
TAAGGTGGAGATCCTGCGCAGTGCCATCCAGTACATTGAGCGCCTACAGGCCTTGCTCAGCTCCCTCAAC
CAGGAGGAGCGGATCTCCGCTACCGAGCGGGGGCGGGCCCCAGCCGGTGGTACCCAGTGAATGCAACT
CCCACAGCGCCTCCTGCAGTCCGGAGTGGGCAATGCACTGGAGTTTGGTCCCAACCCAGGAGATCATT
GCTCGCAGCTGACCCTACAGGTGCCCAACCTGCACTCCCTACGTCCATCGTGGACAGCATCACGGTG
GAGGATATGTCTGTCACCTTCCAGATGAAACCATGCCAAC

ACGCGTACGCGGCGCTCGAGCAGAAACTCATCTCAGAAGAGGATCTGGCAGCAAATGATATCCTGGATT
ACAAGGATGACGACGATAAGGTTTAA

Protein Sequence: >RR202859 representing NM_017115
Red=Cloning site Green=Tags(s)

MELYETSPYFYQEPHFYDGENYLPVHLQGFEPGYERTELSLSPEARGPLEEKGLGTPEHCPGQCLPWAC
KVCKRKSVSVDRRRAATLREKRRLKKNVNEAFEALKRSTLLNPNQRLPKVEILRSATQYIERLQALLSSLN
QEERDLRYRGGGPPQVVPSECNSSASCSPEWGNALFEPNPGDHLAADPTGAHNLHSLTSIVDSITY
EDMSVTFPDEMPN

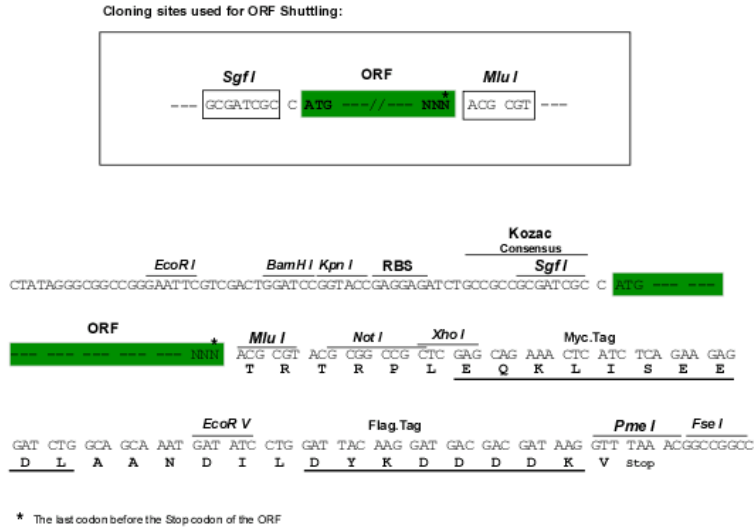
TRTRPLEQKLISEEDLAANDILDYKDDDDKV



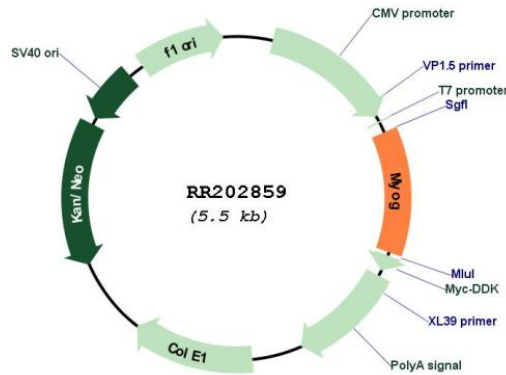
[View online »](#)

Restriction Sites: SgfI-MluI

Cloning Scheme:



Plasmid Map:



ACCN: NM_017115

ORF Size: 672 bp

OTI Disclaimer: The molecular sequence of this clone aligns with the gene accession number as a point of reference only. However, individual transcript sequences of the same gene can differ through naturally occurring variations (e.g. polymorphisms), each with its own valid existence. This clone is substantially in agreement with the reference, but a complete review of all prevailing variants is recommended prior to use. [More info](#)

OTI Annotation: This clone was engineered to express the complete ORF with an expression tag. Expression varies depending on the nature of the gene.

Components:	The ORF clone is ion-exchange column purified and shipped in a 2D barcoded Matrix tube containing 10ug of transfection-ready, dried plasmid DNA (reconstitute with 100 ul of water).
Reconstitution Method:	<ol style="list-style-type: none">1. Centrifuge at 5,000xg for 5min.2. Carefully open the tube and add 100ul of sterile water to dissolve the DNA.3. Close the tube and incubate for 10 minutes at room temperature.4. Briefly vortex the tube and then do a quick spin (less than 5000xg) to concentrate the liquid at the bottom.5. Store the suspended plasmid at -20°C. The DNA is stable for at least one year from date of shipping when stored at -20°C.
RefSeq:	<u>NM_017115.2</u> , <u>NP_058811.2</u>
RefSeq Size:	1448 bp
RefSeq ORF:	675 bp
Locus ID:	29148
UniProt ID:	<u>P20428</u>
Cytogenetics:	13q13
MW:	25.1 kDa
Gene Summary:	This gene belongs to the myogenic factor subfamily of the basic helix-loop-helix (BHLH) family of transcription factors. The protein encoded by this gene is a muscle-specific skeletal myogenin, which acts in concert with other family members to regulate myogenesis. The protein plays an essential role in the conversion of undifferentiated cells to myoblasts and functional skeletal muscle. [provided by RefSeq, Jul 2008]