

Product datasheet for **RR202848**

Psmid9 (NM_130430) Rat Tagged ORF Clone

Product data:

Product Type: Expression Plasmids
 Product Name: Psmid9 (NM_130430) Rat Tagged ORF Clone
 Tag: Myc-DDK
 Symbol: Psmid9
 Synonyms: Bridge; Bridge-1
 Mammalian Cell Selection: Neomycin
 Vector: pCMV6-Entry (PS100001)
 E. coli Selection: Kanamycin (25 ug/mL)
 ORF Nucleotide Sequence: >RR202848 representing NM_130430
 Red=Cloning site Blue=ORF Green=Tags(s)

TTTTGTAATACGACTCACTATAGGGCGGCCGGAATTCGTCGACTGGATCCGGTACCGAGGAGATCTGCC
 GCC**CGATCGCC**

ATGTCGAGTGAGGAAGTCCGGCACCGGGCAGAGTCCTCTGAGGCCGTGCGGCCGCGGTGAGCGACATCC
 AGGAGCTGATGCGACGCAAGGAGGAAATCGAGGCGCAGATCAAGGCTAATTACGACGTCTCGAGAGCCA
 AAAAGGAATTGGCATGAACGAGCCTCTAGTGGACTGCGAGGGCTACCCCGGGCAGATGTGGATTTGTAT
 CAGGTCCGAACAGCAAGGCACAACATCATCTGTCTCCAGAATGATCACAAGGCACTGATGAAGCAGGTGG
 AGGAGGCCCTACACCAGCTACATGCTCGGGACAAAGAGAAGCAGGCTCGGGACATGGCTGAAGCCCAGAG
 AGAGGCCATGAACCGTAGGCTGGCTCGGACAGTCCCGCCCTACCCAAGGCCTTTGCCAGAGTGAACAGT
 ATCAGCCCTGTTCCCCAGCCAGTATTGCGGGCCTGCAAGTGGATGATGAAATTGTGGAGTTCGGCTCTG
 TGAACACCCAAAACCTCCAGTCTCTGCAGAACGTGGGCACTGTGGTGCAGCACAGCGAGGGGAAGCCCT
 GAATGTCATGGTATCCGAGAGGGGAGAAGCACCAGCTCAGACTGACTCCCACCCGCTGGGCAGGAAAA
 GGACTGCTGGGCTGCAATATTACCCCTCTCAAAGA

ACGCGTACGCGGCCGCTCGAGCAGAACTCATCTCAGAAGAGGATCTGGCAGCAAATGATATCTGGATT
 ACAAGGATGACGACGATAAGGTTTAA



[View online »](#)

Protein Sequence: >RR202848 representing NM_130430
Red=Cloning site Green=Tags(s)

MSSEVVRHRAESSEARAAAVSDIQELMRRKEEIEAQIKANYDVLVESQKGIGMNEPLVDCEGYPRADVLDY
 QVRTARHNIICLQNDHKALMKQVEEALHQLHARDKEKQARDMAEAREEAMNRRLASDSPALPKAFARVNS
 ISPGSPASIALGLQVDDEIVEFGSVNTQNFQSLQNVGTVVQHSEGKPLNVMVIRREGKHQLRLTPTRWAGK
 GLLGCNITPLQR

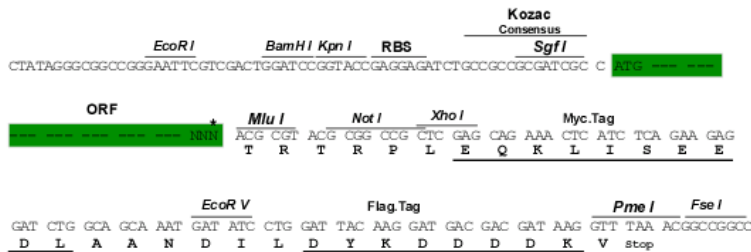
TRTRPLEQKLISEEDLAANDILDYKDDDDKV

Chromatograms: https://cdn.origene.com/chromatograms/ja1918_b10.zip

Restriction Sites: SgfI-MluI

Cloning Scheme:

Cloning sites used for ORF Shuttling:



* The last codon before the Stop codon of the ORF

ACCN: NM_130430

ORF Size: 666 bp

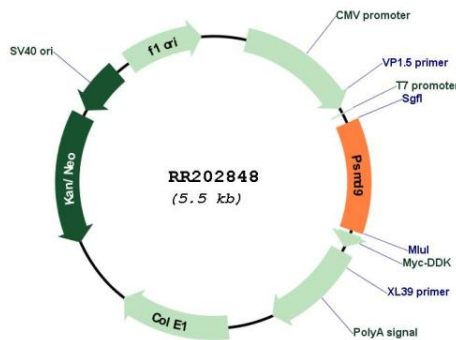
OTI Disclaimer: Due to the inherent nature of this plasmid, standard methods to replicate additional amounts of DNA in E. coli are highly likely to result in mutations and/or rearrangements. Therefore, OriGene does not guarantee the capability to replicate this plasmid DNA. Additional amounts of DNA can be purchased from OriGene with batch-specific, full-sequence verification at a reduced cost. Please contact our customer care team at custsupport@origene.com or by calling 301.340.3188 option 3 for pricing and delivery.

The molecular sequence of this clone aligns with the gene accession number as a point of reference only. However, individual transcript sequences of the same gene can differ through naturally occurring variations (e.g. polymorphisms), each with its own valid existence. This clone is substantially in agreement with the reference, but a complete review of all prevailing variants is recommended prior to use. [More info](#)

OTI Annotation: This clone was engineered to express the complete ORF with an expression tag. Expression varies depending on the nature of the gene.

- Components:** The ORF clone is ion-exchange column purified and shipped in a 2D barcoded Matrix tube containing 10ug of transfection-ready, dried plasmid DNA (reconstitute with 100 ul of water).
- Reconstitution Method:**
1. Centrifuge at 5,000xg for 5min.
 2. Carefully open the tube and add 100ul of sterile water to dissolve the DNA.
 3. Close the tube and incubate for 10 minutes at room temperature.
 4. Briefly vortex the tube and then do a quick spin (less than 5000xg) to concentrate the liquid at the bottom.
 5. Store the suspended plasmid at -20°C. The DNA is stable for at least one year from date of shipping when stored at -20°C.
- RefSeq:** [NM_130430.1](#), [NP_569114.1](#)
- RefSeq Size:** 1448 bp
- RefSeq ORF:** 669 bp
- Locus ID:** 161475
- UniProt ID:** [Q9WTV5](#)
- Cytogenetics:** 12q16
- MW:** 25.3 kDa
- Gene Summary:** interacts with E2A transcription factors; acts as a transcription coactivator; may regulate transcription of the insulin gene [RGD, Feb 2006]

Product images:



Circular map for RR202848