

Product datasheet for **RR202833**

Gpt (NM_031039) Rat Tagged ORF Clone

Product data:

Product Type:	Expression Plasmids
Product Name:	Gpt (NM_031039) Rat Tagged ORF Clone
Tag:	Myc-DDK
Symbol:	Gpt
Synonyms:	ALAT; Gpt1
Vector:	pCMV6-Entry (PS100001)
E. coli Selection:	Kanamycin (25 ug/mL)
Cell Selection:	Neomycin



[View online »](#)

ORF Nucleotide Sequence:

>RR202833 representing NM_031039
 Red=Cloning site Blue=ORF Green=Tags(s)

TTTTGTAATACGACTCACTATAGGGCGGCCGGAATTCGTCGACTGGATCCGGTACCGAGGAGATCTGCC
 GCC**GCGATCGCC**

ATGGCCTCACGGGTGAATGATCAAAGCCAGGCTTCAAGGAATGGGCTGAAGGAAAGGTGCTAACTCTGG
 AACTATGAACCCATGTGTGCGGAGGGTGGAGTATGCAGTTCGAGGACCCATTGTGCAGCGTGCCTTGGA
 GCTGGAGCAGGAGCTGCGTCAGGGTGTGAAGAAGCCGTTTACTGAGGTCATCCGTGCCAACATTGGGGAT
 GCACAAGCCATGGGGCAGAGACCCATCACCTTCTTCCGCCAGGTCTGGCCCTCTGTGTCTACCCCAATC
 TTCTGAGCAGTCTGACTCCCAGAGGATGCCAAGAGAAGGGCAGAACGCATCTTGCAGGCTGCGGGGG
 CCACAGCTGGGTGCCTATAGCATTAGCTCTGGAATCCAGCCGATCCGGGAGGATGTGGCGCAATACATT
 GAGAGAAGAGACGGAGGCATCCCCGAGACCCGAACAACATATTTCTATCCACAGGGGCCAGCGATGCCA
 TCGTGACAATGCTCAAGCTGCTGGTATCTGGCGAGGGCCGTGCACGAACAGGTGTACTATTCCCATTCC
 TCAGTACCCACTGTACTCAGCCGCTGGCTGAACTGGACGCCGTGCAAGTGGACTACTACCTGGACGAA
 GAGCGCGCTGGGCTCTGGACATCGCAGAGCTGCGGCGCGCTCTGTGCCAGGCAGTGACCGTTGCTGCC
 CTCGAGTACTGTGCGTCAACCCCGCAACCCCACTGGGCAGGTGCAGACCCGTGAGTGCATCGAGGC
 CGTAATCCGCTTTGCTTTCAAAGAAGGACTCTTCTTGTAGGCTGATGAGGTATACCAGGACAACGTGAT
 GCCGAGGGCTCTCAGTCCATTCATTCAAGAAGGTGCTCATGGAGATGGGGCCACCGTATCCACGCAGC
 AGGAGCTTGCTTCTTCCACTCAGTCTCTAAGGGCTACATGGGCGAGTGGGGTTTCGTGGTGGCTATGT
 GGAGGTGGTAAACATGGATGCTGAGGTGCAGAAACAGATGGGGAAGCTGATGAGTGTGCGGCTGTGTCCA
 CCAGTCCAGGCCAGGCCCTTGTGAGCATGGTGGTCACTCCGCCAACCCCTCCGAGCCGCTCTTCAAGC
 AGTTTTCAAGCAGAGACAGGAGGTGCTGGCTGAACTGGCAGCCAAAGGCTAAGCTCACGAGCAGGTCTT
 CAATGAGGCTCCCGGGATCCGCTGCAACCCAGTGCAGGGCGCCATGTATTCCCTCCCTCAAGTGCAGCTG
 CCCTTGAAGCGGTGCAGCGTGTCTCAGGAAGTGGGCTGGCCCTGACATGTTCTTCTGCCTGTGCCTCC
 TGAAGAGACTGGCATCTGCGTTGTGCCGGGAGTGGCTTTGGGCAGCAGGAGGGCACCTATCATTTCCG
 GATGACCATTCTGCCCCCATGGAGAACTGCGGCTGCTGCTGGAAAACTCAGTCACTTCCATGCCAAG
 TTCACCCATGAGTACTCC

ACGCGTACGCGGCCGCTCGAGCAGAAACTCATCTCAGAAGAGGATCTGGCAGCAAATGATATCTGGATT
 ACAAGGATGACGACGATAAGGTTTAA

Protein Sequence:

>RR202833 representing NM_031039
 Red=Cloning site Green=Tags(s)

MASRVNDQSQASRNLKGGKVLTLDTMNPVRRVEYAVRGPVQRALELEQELRQGVKPFTEVIRANIGD
 AQAMGQRPITFFRQVLALCVYPNLLSSPDFPEDAKRRAERILQACGGHSLGAYSISGGIPIREDVAQYI
 ERRDGGIPADPNIFLSTGASDAIVTMLKLLVSGEGRARTGVLIPYQYPLYSAAELDAVQVDYYLDE
 ERAWALDIAELRRALCQARDRCCPRVLCVINPGNPTGQVQTRECI EAVIRFAFKEGLFLMADEVYQDNVY
 AEGSQFHSFKKVLMEMGPPYSTQQELASFHSVSKGYMGECEGFRGGYVEVNMDAEVQKMGKLSVRLCP
 PVPGQALMDMVVSPPTPSEPSFKQFQAERQEVLAELAAKAKLTEQVFNEAPGIRCNPVQGMYSFPQVQL
 PLKAVQRAQELGLAPDMFFCLLLEETGICVVPVSGSGFGQEGTYHFRMTILPPMEKLRLLLEKLSHFHAK
 FTHEYS

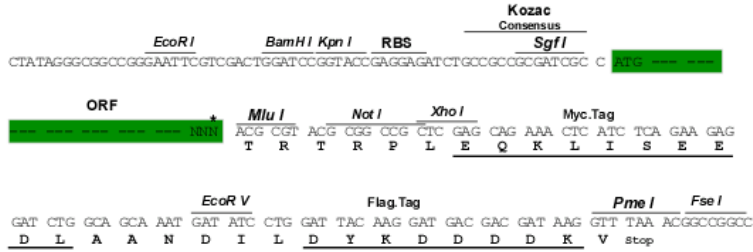
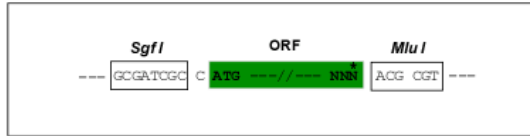
TRTRPLEQKLISEEDLAANDILDYKDDDDKV

Restriction Sites:

SgfI-MluI

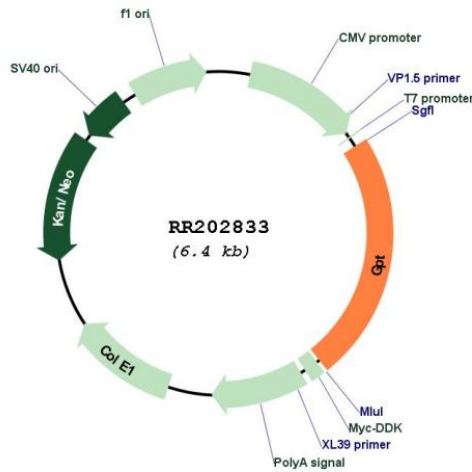
Cloning Scheme:

Cloning sites used for ORF Shutting:



* The last codon before the Stop codon of the ORF

Plasmid Map:



ACCN: NM_031039

ORF Size: 1488 bp

OTI Disclaimer: The molecular sequence of this clone aligns with the gene accession number as a point of reference only. However, individual transcript sequences of the same gene can differ through naturally occurring variations (e.g. polymorphisms), each with its own valid existence. This clone is substantially in agreement with the reference, but a complete review of all prevailing variants is recommended prior to use. [More info](#)

OTI Annotation: This clone was engineered to express the complete ORF with an expression tag. Expression varies depending on the nature of the gene.

Components: The ORF clone is ion-exchange column purified and shipped in a 2D barcoded Matrix tube containing 10ug of transfection-ready, dried plasmid DNA (reconstitute with 100 ul of water).

Reconstitution Method:

1. Centrifuge at 5,000xg for 5min.
2. Carefully open the tube and add 100ul of sterile water to dissolve the DNA.
3. Close the tube and incubate for 10 minutes at room temperature.
4. Briefly vortex the tube and then do a quick spin (less than 5000xg) to concentrate the liquid at the bottom.
5. Store the suspended plasmid at -20°C. The DNA is stable for at least one year from date of shipping when stored at -20°C.

RefSeq: [NM_031039.1](#), [NP_112301.1](#)

RefSeq Size: 1744 bp

RefSeq ORF: 1491 bp

Locus ID: 81670

UniProt ID: [P25409](#)

Cytogenetics: 7q34

MW: 55.1 kDa

Gene Summary: human homolog is a cytosolic alanine aminotransferase [RGD, Feb 2006]