

Product datasheet for RR202805

Cdk1 (NM_019296) Rat Tagged ORF Clone

Product data:

Product Type:	Expression Plasmids
Product Name:	Cdk1 (NM_019296) Rat Tagged ORF Clone
Tag:	Myc-DDK
Symbol:	Cdk1
Synonyms:	Cdc2; Cdc2a
Mammalian Cell Selection:	Neomycin
Vector:	pCMV6-Entry (PS100001)
E. coli Selection:	Kanamycin (25 ug/mL)
ORF Nucleotide Sequence:	>RR202805 representing NM_019296 Red=Cloning site Blue=ORF Green=Tags(s)

TTTTGTAATACGACTCACTATAGGGCGGCCGGAATTCGTCGACTGGATCCGGTACCGAGGAGATCTGCC
GCC**CGCATCGCC**

ATGGAGGACTATATCAAATAGAGAAAATCGGAGAAGGGACTTATGGTGTGGTATATAAAGGTAGACACA
GGACTACTGGCCAGATCGTGGCCATGAAGAAAATCAGACTTGAAAGCGAGGAAGAAGGAGTGCCAGTAC
GGCAATCCGGGAAATCTCTGTAAAAGAACTTCGACATCCAAATATAGTCAGCCTGCAGGATGTACTC
ATGCAGGACTCCAGGCTGTATCTCATCTTCGAGTTCCTGTCCATGGATCTCAAGAAGTACCTGGACTCTA
TCCCTCCTGGCCAGTTCATGGATTCTTCGCTCGTTAAGAGTTACTTGTACCAAATCCTCCAGGGGATTGT
GTTTTGCTACTCCCGACGAGTTCACAGAGACTTGAAACCTCAAATCTATTGATTGATGACAAAGGA
ACAATCAAATGGCAGATTTCCGGCTTGCCAGAGCGTTTGAATACCGATAAGAGTGTACACACACGAGG
TAGTGACGCTGTGGTACCGGTCGCCAGAGGTGTTGCTGGGCTCGGCTCGCTACTCCACCCCGTTGACAT
CTGGAGCATAGGGACCATATTTGCAGAGCTGGCGACCAAGAAGCCGCTTTTCCACGGCGACTCAGAGATT
GACCAGCTCTCAGGATCTCAGAGCTTGGGCACCCCTAACACGAAGTGTGGCCAGAAGTAGAGTCCC
TGCAGGACTACAAGAACAATTTCCCAAGTGAAGCCGGGGAGCCTCGCTCCCACGTCAAGAACCTGGA
TGAACCGGCTTGGACTTGCTCTCGAAAATGCTGGTCTATGATCCAGCCAAACGAATCTCTGAAAAATG
GCCCTTAAGCACCCATACTTTGACGACTTGGACAATCAGATCAAGAAGATG

ACGCGTACGCGGCCGCTCGAGCAGAAAACATCTCAGAAGAGGATCTGGCAGCAAATGATATCCTGGATT
ACAAGGATGACGACGATAAGGTTTAA



[View online »](#)

Protein Sequence: >RR202805 representing NM_019296
Red=Cloning site Green=Tags(s)

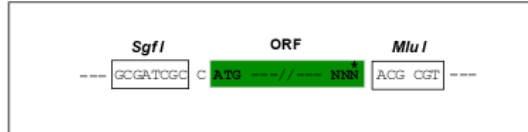
MEDYIKIEKIGEGTYGVVYKGRHRTTGQIVAMKKIRLESEEEGVPSTAIRESLLKELRHPNIVSLQDVL
 MQDSRLYLIFEFLSMDLKKYLDIIPPGQFMDSSLVKSILYQILQGI VFCHSRRLHRDLKPQNLLIDDKG
 TIKLADFGLARAFGIPIRVYTHEVVTLWYRSPEVLLGSARYSTPVDIWSIGTIFAELATKKPLFHGDSEI
 DQLFRIFRALGTPNNEVWPEVESLQDYKNTFFPKWKPGSLASHVKNLDEGLDLLSKMLVYDPAKRISGKM
 ALKHPYFDDLDNQIKKM

TRTRPLEQKLISEEDLAANDILDYKDDDDKV

Restriction Sites: SgfI-MluI

Cloning Scheme:

Cloning sites used for ORF Shuttling:



* The last codon before the Stop codon of the ORF

ACCN: NM_019296

ORF Size: 891 bp

OTI Disclaimer: The molecular sequence of this clone aligns with the gene accession number as a point of reference only. However, individual transcript sequences of the same gene can differ through naturally occurring variations (e.g. polymorphisms), each with its own valid existence. This clone is substantially in agreement with the reference, but a complete review of all prevailing variants is recommended prior to use. [More info](#)

OTI Annotation: This clone was engineered to express the complete ORF with an expression tag. Expression varies depending on the nature of the gene.

Components: The ORF clone is ion-exchange column purified and shipped in a 2D barcoded Matrix tube containing 10ug of transfection-ready, dried plasmid DNA (reconstitute with 100 ul of water).

Reconstitution Method:

1. Centrifuge at 5,000xg for 5min.
2. Carefully open the tube and add 100ul of sterile water to dissolve the DNA.
3. Close the tube and incubate for 10 minutes at room temperature.
4. Briefly vortex the tube and then do a quick spin (less than 5000xg) to concentrate the liquid at the bottom.
5. Store the suspended plasmid at -20°C. The DNA is stable for at least one year from date of shipping when stored at -20°C.

RefSeq: [NM_019296.1](#), [NP_062169.1](#)

RefSeq Size: 1184 bp

RefSeq ORF: 894 bp

Locus ID: 54237

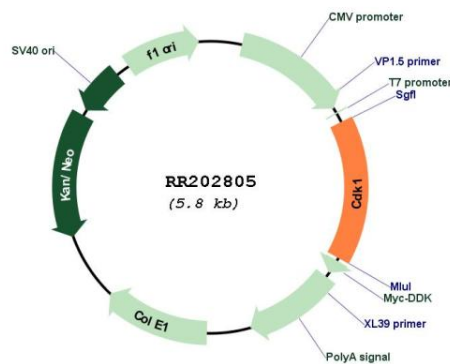
UniProt ID: [P39951](#)

Cytogenetics: 20p11

MW: 34.1 kDa

Gene Summary: putative cell cycle control protein; homologous to *S. pombe* Cdc2 [RGD, Feb 2006]

Product images:



Circular map for RR202805