

Product datasheet for **RR202751**

Arl6ip6 (NM_001024310) Rat Tagged ORF Clone

Product data:

Product Type: Expression Plasmids
Product Name: Arl6ip6 (NM_001024310) Rat Tagged ORF Clone
Tag: Myc-DDK
Symbol: Arl6ip6
Vector: pCMV6-Entry (PS100001)
E. coli Selection: Kanamycin (25 ug/mL)
Cell Selection: Neomycin
ORF Nucleotide Sequence: >RR202751 representing NM_001024310
Red=Cloning site Blue=ORF Green=Tags(s)

TTTTGTAATACGACTCACTATAGGGCGGCCGGAATTCGTCGACTGGATCCGGTACCGAGGAGATCTGCC
GCC**CGATCGCC**

ATGTCCTTTGTGGAGAGTTGGAGGTCTGTAGGCCCGCTAGGCCCGTCAGGTTACCCAGGCCCTGTCA
CTCGGTCTGTGTATCCGACTACACTCAAGGGAATAGCTGGAGTGAGGACGGAGACGAGGGATGCGACCA
AGTGGCCCGCAGCTTGCAGCAGAGTTCTCGGCCAGGGCGTCGTCGGAGTCCAAGAGGGCTCCGCTACTC
CCACGGATCGGGGACGGGTGCGCCGTCTGCCGATAAGCGCAACGGCATCTTCCGCGCAGCTGCGGCCA
AGCGAACCAGGCTCGGCGGTGGCCCATCCAAGCCCTTCCATTCTTTGTTGCTGCTGTTGCGCGTCTCT
CCTTGCTTTTCTCCTCGCCATCGCTACCTGATCGTTAAAGAATTGCATACAGAAAACCGAAAAATGAA
GATGTCGTAGATACGGGGCTGTTAGGATTCTGGTCTCTGCTGATAATATCTCTAACTGCTGGATTATCT
GTTGCAGCTTTTCTGGACAGTGACTTACTTTGATTCTTTGAACCAGGAATGTTCCGCCTACTCCTCT
TTCACCTGCTAGGTTCAAGAACTGACTGGACATTCTTTCCACATGGGCTACAGCATGGCAATTCTGAAT
GGTGTGTAGCTGCTCTCACTGTGGCATGGTGCCTTATG

ACGCGTACGCGGCCGCTCGAGCAGAACTCATCTCAGAAGAGGATCTGGCAGCAAATGATATCCTGGATT
ACAAGGATGACGACGATAAGGTTTAA

Protein Sequence: >RR202751 representing NM_001024310
Red=Cloning site Green=Tags(s)

MSFVESWRSVGPVRRRRQVTPGPVTRSVYSYDTQGNWSWSEDEGCDQVARDLRAEFSARASSESKRAPLL
PRIGDGPVLPDKRNGIFPATAAKRTQARRWPIQALSILCSLLFAVLLAFLLAIAYLIVKELHTENSKNE
DVVDLTGLLGFWSLLIISLTAGLSCCSFSWTVTYFDSFEPGMFPPTPLSPARFKKLTGHSFHMGYSMAILN
GVVAALTVAWCLM

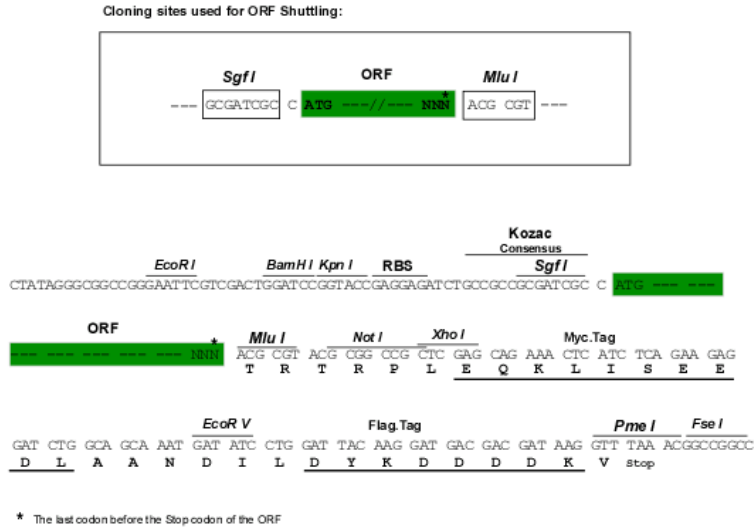
TRTRPLEQKLISEEDLAANDILDYKDDDDKV



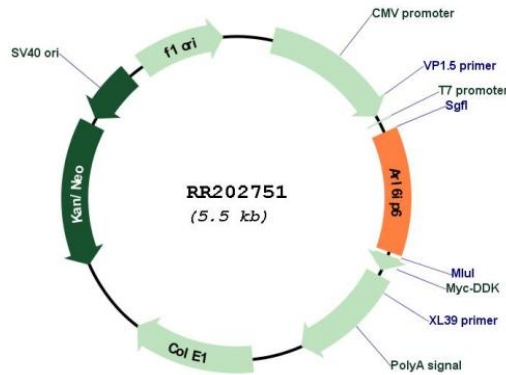
[View online »](#)

Restriction Sites: SgfI-MluI

Cloning Scheme:



Plasmid Map:



ACCN: NM_001024310

ORF Size: 669 bp

OTI Disclaimer: The molecular sequence of this clone aligns with the gene accession number as a point of reference only. However, individual transcript sequences of the same gene can differ through naturally occurring variations (e.g. polymorphisms), each with its own valid existence. This clone is substantially in agreement with the reference, but a complete review of all prevailing variants is recommended prior to use. [More info](#)

OTI Annotation: This clone was engineered to express the complete ORF with an expression tag. Expression varies depending on the nature of the gene.

Components:	The ORF clone is ion-exchange column purified and shipped in a 2D barcoded Matrix tube containing 10ug of transfection-ready, dried plasmid DNA (reconstitute with 100 ul of water).
Reconstitution Method:	<ol style="list-style-type: none">1. Centrifuge at 5,000xg for 5min.2. Carefully open the tube and add 100ul of sterile water to dissolve the DNA.3. Close the tube and incubate for 10 minutes at room temperature.4. Briefly vortex the tube and then do a quick spin (less than 5000xg) to concentrate the liquid at the bottom.5. Store the suspended plasmid at -20°C. The DNA is stable for at least one year from date of shipping when stored at -20°C.
RefSeq:	<u>NM_001024310.1, NP_001019481.1</u>
RefSeq Size:	1745 bp
RefSeq ORF:	672 bp
Locus ID:	499798
UniProt ID:	<u>Q68FV2</u>
Cytogenetics:	3q12
MW:	24.6 kDa