

Product datasheet for **RR202740**

Snx29 (NM_001109526) Rat Tagged ORF Clone

Product data:

Product Type:	Expression Plasmids
Product Name:	Snx29 (NM_001109526) Rat Tagged ORF Clone
Tag:	Myc-DDK
Symbol:	Snx29
Synonyms:	RGD1565890; Rundc2a
Vector:	pCMV6-Entry (PS100001)
E. coli Selection:	Kanamycin (25 ug/mL)
Cell Selection:	Neomycin



[View online »](#)

ORF Nucleotide
Sequence:

>RR202740 representing NM_001109526
Red=Cloning site Blue=ORF Green=Tags(s)

TTTTGTAATACGACTCACTATAGGGCGGCCGGGAATTCGTCGACTGGATCCGGTACCGAGGAGATCTGCC
GCC**CGGATCGCC**

ATGAGCGGGCTGCAGAACGATGACAGAAGGCAGTTCCTGCTGGAGCGGCTGCTGGATGCAGTGAAGCAGT
GCCAGATCCGCTTTGGAGGGAGAAAGGAGATCGCCTCAGACTCAGACAGCAGGGTGACCTGTCTGTGTGC
CCAGTTTGAAGCCGTCCTTCAGCATGGCATGAAGAGGAGCCGAGGATTAGCACTCACAGCTGCAGCCATC
AAGCAGGCCGAGGCTTCACCAGCAAACCGAGACAGAGCCCGTGTCTGGGTCTATGTGAAGGAGGTCC
TCAGCAAGCACGAGCTGCAGCGCTTCTACTCCCTGCACCACATCACTGCCGATGTTGGCCGAGGCCGGGC
CTGGCTGCGCTGCGCCCTAAATGAGCACTCCCTCGAGCGCTACCTGCACATGCTGCTGGTGACCCGACC
AGGCTCAGCACATTCTATGAAGATTGGTCTTTGTAATGGATGAAGAAAGGTCCAGCATGCTCCCTACCA
TGCCAGCTGGTCTGAACTCCATACTCTTTGCCATTAACATTGACAACAAGGATTTGAATGGCCAGAGCAA
ATTCGCTCCCCTGTCTCTGACCTCTTAAAGGAGTCAACACAGAATATGACATCTTTGCTGAAGGAGTCT
ACGCAGGGCATGAGTAGCCTTCTCAGGGAGATCACAGCGTCTCTGTGTCTCCATTCTCATCAAACAG
AGCAGGAACTGACCCTCTGCCTGTCTATATCCAAGAACGTCATGTTGATGCCCGATGTAAAAGGGAGCG
GAGGAGGAGGAAGAAGGTGACCAACATTGTCTCTTTGATGATGACGATGAGGAGCAGGGCGCTGGGGAC
ACTTTAAAAAAGATGCCTGGGACTGCAGAGAGTTCCGAGGAGAACTCTGACCGATCCCTGTCAACATCA
TGGCAGCCTTTGAAGGCCCTTTGGGCCAAATTCACGGGAGCCAGAGCAGCAACTCATGAAAATGGA
TTCTGCATCTTTGAACGGGGAGCTGGGTACCAGAAGCTTGTGATGAAGAGCATTGATGACGATGTGGAT
GAGAGCGAGGAGGCTGTGTACAGGAACCCATTAGGAAGGGGACACACGGGCCACAAGGAGTCGCCAGACA
GGACACTGGATGGGAATGCCAGCCTCCCCAGGTACATGGCTGGGCCCACTGCAGGTGCTTCATGGAGA
TGCTGATGCTGACACTGACATCCTCTTTCCCGTCAAGTGGAGTGGGCTCCTATGGTACAGCAGATGCCCT
GTGGGAAGTCTGGAGAACGGAACAGGGACAGAGGACCACATACTTCCAGAGCCTGGCCTTCGGTACAGGG
AAGCTGGCTCTCCCGGCCGAGGAAGTCTTTGAGCAGCTTGTTACCTTCTGCCTCAGTGCCTGAGTCCAT
GACAGTCCATGAACTGCGCCAAGCCATCGTGGCCATGATGAACAGAAAGGATGAACTGGAAGAAGAGAAC
GGGTCACTGCGCAATCTCCTTGATGGTGTGAGATGGAGCACTCAGCGGCACTCCGGCAAGAGGTGGATGCCT
TGAGGAGGAAGGTGACAGAGCAGCAAGAGCGCCATGCCACAAAGGTCCAGGCGCTGGCCAGAGAAAACGA
GGTGTCAAAGTCCAGCTGAAGAAATATGTAGGAGCTGTCCAGATGCTGAAAAGAGAAGGTCAAACCGCC
GAAGTTGTACCCAGTCTTTGGAACGTTGATGCAGAAGTCAAGTCCCTGAACAGAAAGCCTGGGGAAGTTG
CCGAGGAACTAGCAAGCTCCTATGAGAGGAAGCTCATTGAGGTAGCCGAGATGCATGGAGAGCTGATTGA
GTTCAATGAGCGTCTACACAGGGCCCTGGTGGCCAAGGAAGCCCTGGTGTCCCAATGAGGCAGGAACTG
ATTGACCTCCGAGGCCCGGTGCCTGGAGACTTGAGCCAAACATCCGAAGACCAGAGCTTGTCCGATTTTG
AAATATCAAATCGGGCACTGATCAATGTCTGGATCCCCCTCTGTGTTTCTCCGAGGCAAAGCAGCCAAACGC
GTACCACGTGTATCAGGTCTACATTGCGATAAAAGACGACGAGTGGAAATGTGTATCGTCGGTACACTGAG
TTCCGGGGGCTGCACCACCAGCTGCAGAGTGTTCACCAAGTAAGGGCCTACAGTTTCCCACCCAAAA
AGGCCATCGGAAAACAAGGATGCCAAGTTTGTGGAAGAGCGACGAAAGCAACTCCAGAGTTACCTACGCAG
CGTCATGAACAAGGTCAATCCAGATGGTGCCTGAGTTTGTGCTGCCAACCCCAAGAAGGAGACCTGTGTG
CTGGTGCCTTTCTTCGTGGACATCACCCACCCGGAGAACCCTGAGCAAGAGCAGCAGGCCCAAAGTCCG
TTTCCCGCTTCCCTAAGCTGTCCCGAGGCCATCCAGGAGGTGCGCAACGTGGAACCTCAAAGCGGTGA
CCTC

AG**CGGACCG**ACGCGTACGCGGCCGCTCGAGCAGAACTCATCTCAGAAGAGGATCTGGCAGCAAATGATATCC
TGGATTACAAGGATGACGACGATAAGGTTTAA

Protein Sequence: >RR202740 representing NM_001109526
Red=Cloning site Green=Tags(s)

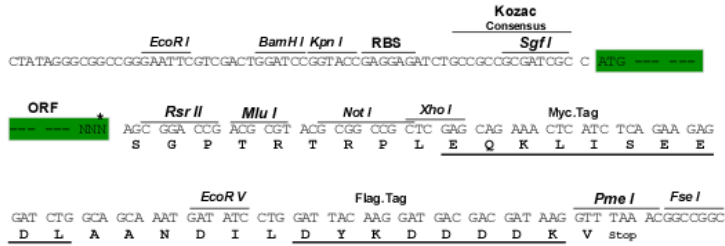
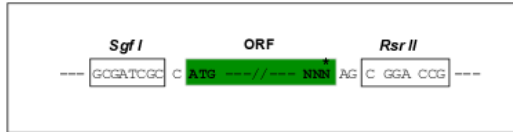
MSGLQNDDRRQFLLERLLDAVKQCQIRFGGRKEIASDSDSRVTCLCAQFEAVLQHGMKRSRGLALTAAAI
KQAAGFTSKTETEPVFWVYVKEVL SKHELQRFYSLHHITADVGRGRAWLRALNEHSLERYLHMLLADRT
RLSTFYEDWSFVMDEERSMMLPTMAAGLNSILFAINIDNKDLNGQSKFAPTVDLLKESTQNMSTLLKES
TQGMSSLLREITASSAVSILIKPEQETDPLPVI SKNVHVDARCKRERRRRKKVTNIVSFDDDDDEEQGAGD
TLKKMPGTAESSEENSDRSSVNIMAAFEFGPFGPNSNGSQSSNSWKMSASLNGELGYQKLDVKSIDDDVD
ESEEAVYRNPLGRGHTGHKESPDRTL DGNASLPQVHGWA PLQVLHGDADADTDILFPVSGVGSYGTADAP
VGSLENGTGTEDHILPEPGLRYREAGSPGRGSPLSSLLPSASVPESMTVHEL RQAIVAMMNRKDELEEN
GSLRNLLDGEMEHS AALRQEV DALRRK VTEQQRHATKVQALARENEVLKVQLKKYV GAVQMLKREGQTA
E VVPSLWNVDAEVTVPEQKPG EVAEELASSYERK LIEVAEMHGELIEFNERLHRALVAKEALVSQMRQEL
IDL RGPVPGDLSQTS EDQSL SDFEISNRALIN VWIPSVFLRGK AANAYHVYQVYIRIKDDEWNVYRRYTE
FRGLHHQLQSAFPQVRAYSFPKKAIGNKDAKFVEERRKQLQSYLR SVMNKVIQMVPEFAANPKKETLVQ
LV PFFVDITPPGEPLSKSSRPKVVS RFPKLSRGHPREVRNVEPQSGDL

SGP TRTRPLEQKLI SEEDLAANDILDYKDDDDKV

Restriction Sites: SgfI-RsrII

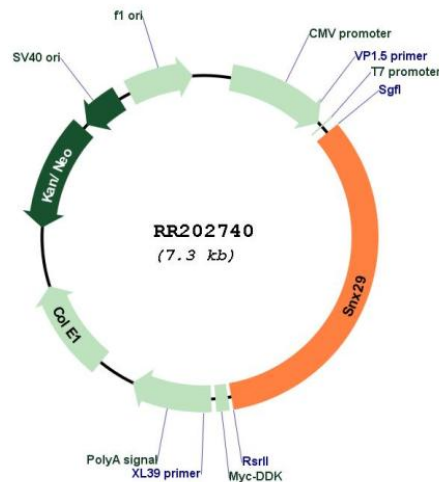
Cloning Scheme:

Cloning sites used for ORF Shuttling:



* The last codon before the Stop codon of the ORF

Plasmid Map:



ACCN: NM_001109526

ORF Size: 2454 bp

OTI Disclaimer: The molecular sequence of this clone aligns with the gene accession number as a point of reference only. However, individual transcript sequences of the same gene can differ through naturally occurring variations (e.g. polymorphisms), each with its own valid existence. This clone is substantially in agreement with the reference, but a complete review of all prevailing variants is recommended prior to use. [More info](#)

OTI Annotation: This clone was engineered to express the complete ORF with an expression tag. Expression varies depending on the nature of the gene.

Components: The ORF clone is ion-exchange column purified and shipped in a 2D barcoded Matrix tube containing 10ug of transfection-ready, dried plasmid DNA (reconstitute with 100 ul of water).

Reconstitution Method:

1. Centrifuge at 5,000xg for 5min.
2. Carefully open the tube and add 100ul of sterile water to dissolve the DNA.
3. Close the tube and incubate for 10 minutes at room temperature.
4. Briefly vortex the tube and then do a quick spin (less than 5000xg) to concentrate the liquid at the bottom.
5. Store the suspended plasmid at -20°C. The DNA is stable for at least one year from date of shipping when stored at -20°C.

RefSeq: [NM_001109526.2](#), [NP_001102996.2](#)

RefSeq Size: 2652 bp

RefSeq ORF: 2457 bp

Locus ID: 689142

Cytogenetics: 10q11

MW: 91.6 kDa