

Product datasheet for **RR202734**

Pde6a (NM_001107386) Rat Tagged ORF Clone

Product data:

Product Type:	Expression Plasmids
Product Name:	Pde6a (NM_001107386) Rat Tagged ORF Clone
Tag:	Myc-DDK
Symbol:	Pde6a
Vector:	pCMV6-Entry (PS100001)
E. coli Selection:	Kanamycin (25 ug/mL)
Cell Selection:	Neomycin



[View online »](#)

ORF Nucleotide Sequence:

>RR202734 representing NM_001107386
 Red=Cloning site Blue=ORF Green=Tags(s)

TTTTGTAATACGACTCACTATAGGGCGGCCGGGAATTCGTCGACTGGATCCGGTACCGAGGAGATCTGCC
 GCC**CGGATCGCC**

ATGGGTGAGGTGACAGCAGAGGAGGTAGAAAAGTTCCTGGATTCAAATATTGGCTTTGCCAAACAATACT
 ATAATTTTCACTACCGGGGAAGGTCGTCTCAGACCTCCTCGGGCCAAGGAGGCAGCCGTGGACTTCAG
 CAACTACCACGATGTGAACAGGGTGGAGGAGAGTGAGATCATCTTTGACCTCCTGCGGGACTTTCAGGAG
 AACTTACAGGCCGAGAAATGCACGTTCAATGTCATGAAGAAGCTCTGCTTCTCCTGCGGGCTGACCGCA
 TGAGCCTGTTTACGTACAGGACCCGCAATGGCATTGCAGAGCTAGCCACCAGGCTCTTCAACGTCCACAA
 GGATGCCGTCCTAGAGGACTGCTTGGTGTGCCAGACTCCGAGATTGCTTCCCTTTGGACATGGGTGTC
 GTGGGCCACGTCGCACACTCCAAAAGATCGCCAATGTCCCAACACAGAAGAGGATGAGCATTTCTGCC
 ACTTCGTGGACAGCCTCACAGAATACAGACCAAGAGCATCCTGGCATCCCCATCATGAATGGGAAGGA
 CGTGGTAGCCATAATTATGGCTGTGAATAAAATAGATGAACCCCACTTCCCAAGAGAGATGAAGAGATT
 CTCTCAAATACCTCAACTTTGTGAATCTGATCATGAAGGTATTCCACCTGAGTTACCTGCACAACCTGTG
 AGACCCGGCGTGGCCAGATATTGCTGTGGTCTGGAAGCAAGGTCTTCAAGAGCTCACGGATATAGAGAG
 GCAGTTCCACAAGGCCCTGTATACGGTCCGAGCTTTTCTCAACTGTGACAGATACTCTGTAGGACTCTTA
 GACATGACCAAACAGAAGGAATTTTTGATGTGTGGCCAGTTCTGATGGGCGAGGCCACGCTACTCTG
 GTCCCAGGACTCCAGATGGAAGGGAAATTAACTTTTACAAGGTCACTTACTACATCTGTCATGGCAAAGA
 AGACATCAAAGTAATCCCGAACCCACCTGCTGACCACTGGGCTCTAGTTAGCGGTCTTCCCACTTATGTG
 GCTCAAATGGTCTGATCGAATAAATGAATGCGCCTGCAGAGGACTTTTTGAAATCCAGAAGAGAGAG
 CTCTGGATGAATCTGGATGGATGATTAACAACTACTCTCCATGCCGATTGTCAACAAGAAGGAAGAGAT
 CGTGGGCGTGGCCACATTTTACAATCGCAAAGATGGGAAGCCCTTCGACGACATGGACGAGACCCTTATG
 GAGTCTTTGACTCAGTTTCTGGGCTGGTCACTTAAACCCTGACACCTACGAGTCCATGAACAACTTG
 AGAACAGGAAGGATATCTTCCAGGACATCGTAAAATATCACGTCAAGTGTGATAATGAGGAAATTCAGAA
 GATCTTGAACACAGAGAGGTGTATGGCAAAGAGCCGTGGGAATGCGAGGAGGAGGAGCTGGCTGAGATC
 CTGCAAGAAGAACTTCCAGATGCCGAGAAATATGAAATCAACAAGTTTCACTTCACTGACCTGCCCTTA
 CGGAATGGAGCTGGTGAATGCGGCATACAGATGTACTATGAGCTCAGAGTGGTGGACAAGTTCCACAT
 CCCGCAAGAGGCCCTGGTGGCTTTCATGTATTGCTAAGCAAAGGCTACCGGAGGATCACTTACCACAAT
 TGGCGGCATGGCTTCAACGTGGGCGAGACCATGTTCTCCTTGCTGATGACAGGAAAGCTGAAGCGATACT
 TCACTGATTTGGAGGCCCTGGCCATGGTCACTGACGCTTCTGTCATGACATTGACCACAGAGGCAGCAA
 CAACCTTACCAGATGAAATCACAGAACCCCTGGCCAAGCTTCACTGGGTCTCCATCTGGAAAGGCAT
 CATTTGGAGTTTGGCAAAACATTGCTGAGAGATGAGAGCCTGAATATCTTTCAGAACCTGAATCGCCGGC
 AGCAGGAGCATGCGATCCACATGATGGACATTGCGATCATCGCCACGGACCTTGCCTGTATTTCAAGAA
 AAGGACAATGTTCCAGAAGATTGTGGATCAGTCAAAGACATATGAGAGTACCCAGGAGTGGACCCAGTAC
 ATGATGCTGGAGCAGACACGGAAGGAAATTTGATGGCCATGATGATGACCGCTGTGACCTCTCAGCCA
 TCACCAAGCCCTGGGAGGTGCAGAGCAAGTGGCTCTGCTGGTGGCTGCTGAATTCTGGGAGCAAGGTGA
 CCTGGAGCGCACAGTGTGCAACAGAATCCCATTCCCATGATGGACAGAAACAAGGCAGATGAATCCCC
 AAGCTTACAGTCCGCTTCAATTGATTTTGTGTGCACCTTTGTCTATAAGGAATTCTCCCGTTTCATGAGG
 AGATCACACCCATGTTGGATGGATCACTAACACCGTAAGGAGTGAAGGCGCTGGCTGATGAGTACGA
 GGCCAGGATGAAAGCATTGGAGGAGGAGAAGCAGAAGCAGCAGGCAGCCAAGCAAGCTGCTTCCGGGAAC
 CAGCCAGGAGGGAACCCAGTCCAGGGGTGCACCTGCATCCAAGTCTGTTGCATCCAG

ACGCGTACGCGGCCGCTCGAGCAGAACTCATCTCAGAAGAGGATCTGGCAGCAATGATATCTGGATT
 ACAAGGATGACGACGATAAGGTTTAA

Protein Sequence: >RR202734 representing NM_001107386
Red=Cloning site Green=Tags(s)

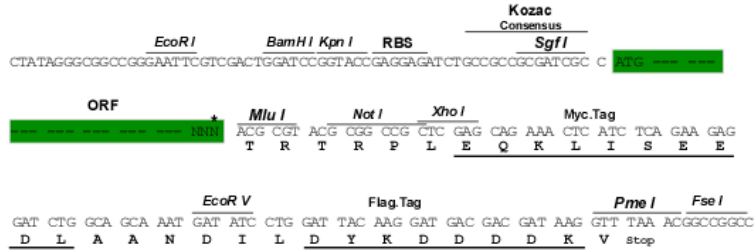
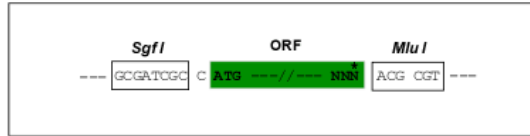
MGEVTAEEVEKFLDSNIGFAKQYYNFHYRGKVVSDLLGAKEAAVDFSNYHDVNRVEESEIIFDLLRDFQE
NLQAEKCTFNVMKKLCFLLRADRMFLMYRTRNGIAELATRLFNVHKDAVLEDCLVMPDSEIVFPLDMGV
VGHVAHSKKIANVPNTEDEHFCDVDSLTEYQTKSILASPIMNGKDVVAIIMAVNKIDEPHFTKRDEEI
LLKYLNFVNLIMKVFHLSYLHNCETRRGQILLWSGSKVFEELTDIERQFHKALYTVRAFLNCDRYSVGLL
DMTKQKEFFDVWPVLMGEAPAYSGPRTPDGREINFYKVIDYILHGKEDIKVIPNPPADHWALVSGLPYV
AQNGLICNIMNAPAEFFFEFQKEPLDESGWMIKNVLSMPIVNKKEEIVGVATFYNRKDGPFDMDMETLM
ESLTQFLGWSVLNPDTYESMNKLENRKDIFQDIVKYHVKCDNEEIQKILKTREYVYKPEWCEEEELAEI
LQEELPDAEKYEINKFHFSDLPLTELELVKCGIQMYELRVVDFHQPQALVRFMYSLSKGYRRITYHN
WRHGFVNGQTMFSLMTGKLRKYFTDLEALAMVTAAFCHDIDHRGTNNLYQMSQNP LAKLHGSSILERH
HLEFGKTLRDESLNIFQNLNRRQHEHA IHMDIAIATDLALYFKKRTMFQKIVDQSKTYESTQEWYQY
MMLEQTRKEIVMAMMTACDLSAITKPWEVQSKVALLVAAEFWEQGLERTVLQQNPIMPMDRKNKADELP
KLQVGFIDFVCTFVYKEFSRFHEEITPMLDGITNNRKEWKALADEYEARMKALEEEKQKQQAASGN
QPGGNPSPGGAPASKSCCIQ

TRTRPLEQKLISEEDLAANDILDYKDDDDKV

Restriction Sites: Sgfl-MluI

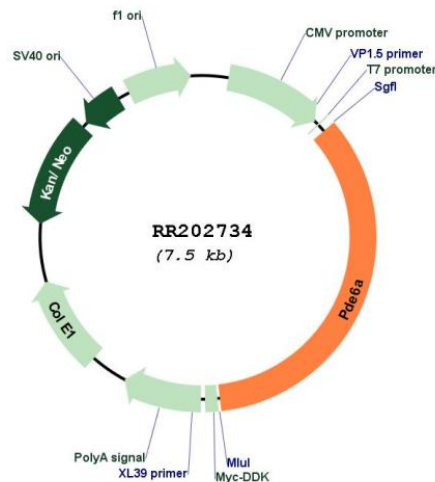
Cloning Scheme:

Cloning sites used for ORF Shuttling:



* The last codon before the Stop codon of the ORF

Plasmid Map:



ACCN: NM_001107386

ORF Size: 2580 bp

OTI Disclaimer: The molecular sequence of this clone aligns with the gene accession number as a point of reference only. However, individual transcript sequences of the same gene can differ through naturally occurring variations (e.g. polymorphisms), each with its own valid existence. This clone is substantially in agreement with the reference, but a complete review of all prevailing variants is recommended prior to use. [More info](#)

OTI Annotation: This clone was engineered to express the complete ORF with an expression tag. Expression varies depending on the nature of the gene.

Components: The ORF clone is ion-exchange column purified and shipped in a 2D barcoded Matrix tube containing 10ug of transfection-ready, dried plasmid DNA (reconstitute with 100 ul of water).

Reconstitution Method:

1. Centrifuge at 5,000xg for 5min.
2. Carefully open the tube and add 100ul of sterile water to dissolve the DNA.
3. Close the tube and incubate for 10 minutes at room temperature.
4. Briefly vortex the tube and then do a quick spin (less than 5000xg) to concentrate the liquid at the bottom.
5. Store the suspended plasmid at -20°C. The DNA is stable for at least one year from date of shipping when stored at -20°C.

RefSeq: [NM_001107386.1](#), [NP_001100856.1](#)

RefSeq Size: 4104 bp

RefSeq ORF: 2583 bp

Locus ID: 307401

Cytogenetics: 18q12.1

MW: 99.8 kDa