

Product datasheet for **RR202728**

Fmo3 (NM_053433) Rat Tagged ORF Clone

Product data:

Product Type:	Expression Plasmids
Product Name:	Fmo3 (NM_053433) Rat Tagged ORF Clone
Tag:	Myc-DDK
Symbol:	Fmo3
Synonyms:	MGC93304
Vector:	pCMV6-Entry (PS100001)
E. coli Selection:	Kanamycin (25 ug/mL)
Cell Selection:	Neomycin



[View online »](#)

ORF Nucleotide Sequence:

>RR202728 representing NM_053433
 Red=Cloning site Blue=ORF Green=Tags(s)

TTTTGTAATACGACTCACTATAGGGCGGCCGGAATTCGTCGACTGGATCCGGTACCGAGGAGATCTGCC
 GCC**CGGATCGCC**

ATGAAGAGGAAAGTGCCGTCATTGGGGCTGGTGTCACTGGTCTGGCTGCCATCAGGAGCTGTCTGGAAG
 AGGGACTGGAGCCACGCTGCTTTGAGAGGAGTGATGATGTTGGGGCCTGTGAAATTTTCAGACCACAC
 AGAAGAGGGCAGGGCCAGCATTTACCAATCGGTCTTCACCAACTCTTCCAAAGAAATGATGTGTTCCCA
 GACTTCCCTATCCCGATGACTTTCCTAACTTCATGCATAACAGCAAGCTCCAAGAATATACACTTCAT
 TTGCCACAGAAAAGAACCTTCTAAAATACATACAGTTTGAGACACTTGTAAACCAGAATCAATAAATGTCC
 TGATTTCTCAACCACTGGCAAATGGGAAGTTACCACTGAAAAGAACAGTAAAAGGAAACAGCTGTCTTT
 GATGCTGTAATGATTTGTTCTGGGCACCATGTATATCCCATCTACCAAAGACTCCTTCCAGGTCTGA
 ACCGTTTCAAAGGCAAATGCTTCCACAGCAGGGACTATAAGGAGCCAGGAACATGGAAGGAAAACGAGT
 CCTGGTGATTGGCTGGGAACTCAGGTTGTGACATCGCTGCGGAACTCAGTCACGTGGCTCAGCAGGTC
 ATCATAAGCTCCAGAAGTGGTTCTTGGGTGATGAGCCGGTCTGGAATGATGGCTACCCTGGGACATGG
 TGGTGATCACACGATTTCAAACATTTCTCAAGAACAACCTACCCACAGCCATTTCTGACTGGTGGTATAT
 GAAGCAGATGAACGCAAGATTCAAGCATGAAAACACGGGTTGATGCCTTTAAATGGAACACTCAGGAAG
 GAGCCTGTGTTCAATGATGAGCTTCCAGCCGCATCCTGTGTGGCACTGTGTCCATCAAGCCTAATGTGA
 AGGAGTTCACAGAGACCTCCGCTGTGTTGAGGATGGGACTGTGTTTGAGGGCATTGACTGTGTCATCTT
 CGCCACAGGCTATGGTTATGCCTACCCCTCCTGGATGACAGCATCATCAAAGCAGAAAATAGAGGTC
 ACCTTGTACAAAGGCATCTTCCCTCCTCAACTAGAGAAACCAACCATGGCAGTGATTGGCCTGTCCAGT
 CCCTGGGTGCTGCCATCCCACAACCGACCTGCAGGCACGCTGGCAGCACAAGTAAAGAGGAACTTG
 CATTTTGCTTCTGTAACGACATGATGGATGATATTGACGAGAAAATGGGGAAGAAGCTTAAATGGTTT
 GGCAACAGCACCACCATTCAGACAGATTACATTGTTTATATGGATGAATTGGCCTCCTTCATCGGAGCAA
 AGCCCAATATCCTATGGCTGTTTCTCAAGGACCCAGGTTGGCCATAGAAGTGTCTTTGGCCCTTGACG
 CCCCTACCAGTTCGGCTGGTAGGCCAGGGAAGTGGTCAGGAGCCAGGAACGCCATCTAACCCAGTGG
 GACCGGCTACTGAAGCCTATGAAGACCCGTGACGTGGTGGTATTCAGAAACCTTGCTTGTATTCCATT
 TTCTCAGGCTCCTGGCTGTTCCAGTGCTCATTGCTTTGTTCTTGTGTTGATC

ACGCGTACGCGGCCGCTCGAGCAGAAACTCATCTCAGAAGAGGATCTGGCAGCAAATGATATCCTGGATT
 ACAAGGATGACGACGATAAGGTTTAA

Protein Sequence:

>RR202728 representing NM_053433
 Red=Cloning site Green=Tags(s)

MKRKVAVIGAGVSGLAAIRSCLEEGLEPTCFERSDDVGGWLKFSDHTEEGRASIYQSVFTNSSKEMMCFP
 DFPYPDDFPNFMHNSKLQEYITSFATEKNLLKYIQFETLVTRINKCPDFSTTGKWEVTEKNSKETA
 DAVMICSGHHVYPHLPKDSFPGLNRFKGCFFHSRDYKEPGTWKGRVLVIGLNSGCDIAAELSHVAQV
 IISRSWSVMSRVWNDGYPWDMVITRFQTLKNNLPTAISDWWYMKQMNARFKHENYGLMPLNGTLRK
 EPVFNDELPARILCGTVSIPNVKEFTETSAVFEDGTVFEGIDCVIFATGYGYAYPFLDDSIKSRNNEV
 TLYKGIFFPPQLEKPTMAVIGLVQSLGAAIPTDLQARWAAQVIRGTCILPSVNDMMDDIDEKMGKLLKWF
 GNSTTIQTDYIVYMDELASFIGAKPNILWFLKDPRLAIEVFFGPCSPYQFRLVGPWKWSGARNAILTQW
 DRSLKPMKTRDVGGIQKPLYSHFLRLLAVPVLIALFLVLI

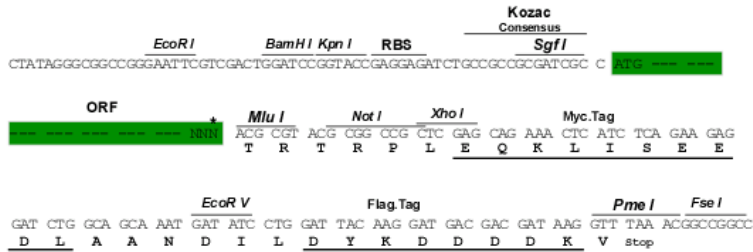
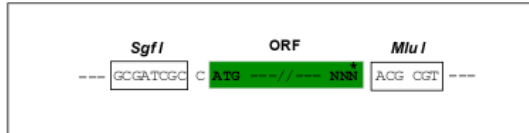
TRTRPLEQKLISEEDLAANDILDYKDDDDKV

Restriction Sites:

Sgfl-MluI

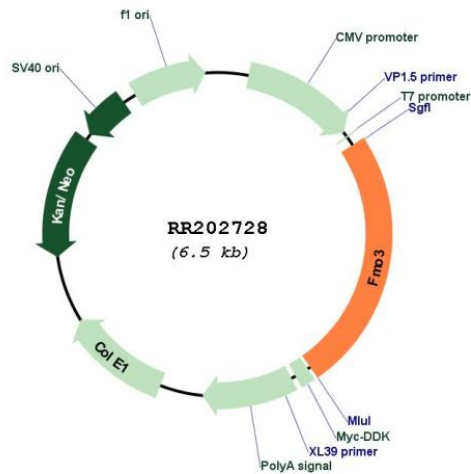
Cloning Scheme:

Cloning sites used for ORF Shutting:



* The last codon before the Stop codon of the ORF

Plasmid Map:



ACCN:	NM_053433
ORF Size:	1593 bp
OTI Disclaimer:	The molecular sequence of this clone aligns with the gene accession number as a point of reference only. However, individual transcript sequences of the same gene can differ through naturally occurring variations (e.g. polymorphisms), each with its own valid existence. This clone is substantially in agreement with the reference, but a complete review of all prevailing variants is recommended prior to use. More info
OTI Annotation:	This clone was engineered to express the complete ORF with an expression tag. Expression varies depending on the nature of the gene.
Components:	The ORF clone is ion-exchange column purified and shipped in a 2D barcoded Matrix tube containing 10ug of transfection-ready, dried plasmid DNA (reconstitute with 100 ul of water).
Reconstitution Method:	<ol style="list-style-type: none">1. Centrifuge at 5,000xg for 5min.2. Carefully open the tube and add 100ul of sterile water to dissolve the DNA.3. Close the tube and incubate for 10 minutes at room temperature.4. Briefly vortex the tube and then do a quick spin (less than 5000xg) to concentrate the liquid at the bottom.5. Store the suspended plasmid at -20°C. The DNA is stable for at least one year from date of shipping when stored at -20°C.
RefSeq:	NM_053433.2 , NP_445885.2
RefSeq Size:	1916 bp
RefSeq ORF:	1596 bp
Locus ID:	84493
UniProt ID:	Q9EQ76
Cytogenetics:	13q22
MW:	60 kDa
Gene Summary:	responsible for methimazole S-oxidation and NADPH oxidation [RGD, Feb 2006]