

Product datasheet for RR202655

Polr1b (NM_031773) Rat Tagged ORF Clone

Product data:

Product Type:	Expression Plasmids
Product Name:	Polr1b (NM_031773) Rat Tagged ORF Clone
Tag:	Myc-DDK
Symbol:	Polr1b
Synonyms:	RPA2; Rpo1-2
Vector:	pCMV6-Entry (PS100001)
E. coli Selection:	Kanamycin (25 ug/mL)
Cell Selection:	Neomycin
ORF Nucleotide Sequence:	>RR202655 representing NM_031773 Red=Cloning site Blue=ORF Green=Tags(s)

TTTTGTAATACGACTCACTATAGGGCGGCCGGAATTCGTCGACTGGATCCGGTACCGAGGAGATCTGCC
GCC**CGATCGCC**

ATGGATGTCGACAGCCGGTGGCGAACCTGCCAGCGGGCCAGCCTAAAGCATTAACCGACCCCTCGT
ACGCGGTTCTCCGAGCAGCAAAGCGCGCTTGCAGGACCTGACGCGGGCGCAGTGGACTCCTTCAA
CTACGCAGTGTGGAGGGCTGAGCCACCGGTGCAGGCCATACCTCCCTCGAATTTGCTTCAAAGAT
GAGCGCATATCTTACTATTGTGGACGCTGCCATCAGTCCACCGCAGTGCCCAAAGGGACCATCTGCA
AAGAGCTCAACATTTATCCAGCTGAGTGCCGTGGCCGGAGGAGCAGTACCGAGGGAAGCTGACGGCTGA
TATCAGCTGGGCCGTGAATGGAGTCCCCAAAGGCATCATTAAACAATTTCTTGGCWATGTTCCCATCATG
GTGAAGTCCAAGCTTTGCAACTTATACAACCTTCTCCTCAAGTCTCATTGAGCACCACGAGGAGGCAG
AGGAAATGGGCGGTTATTTATAATCAACGGCATTGAGAAAGTCATCCGCATGTTGATTATGCCTCGGAG
AAATTTCCCATCGCAATGATAAGACCGAAATGGAAAAGCAGAGGGCTCGGCTACACTCAGTTCGGGTT
TCCATTCAGTGTGAGAGAGGAGCACTCTGTGTCAATATGAACCTTCACTATGTGGAGAACGGCACGG
TCATGTTAAACTTTATTTACCGCAAAGAGCTGTTTTCTTCTTGGGATTTGCACCTTAAGGCACCTGTG
GAGCTTTTCTGACTATCAGATTTTCCAGGAGCTCATCAAAGGCAAAGAGGAGGACTCTTTCTTTAAGAA
TCTGTTTCTCAGATGCTGAGATTGTAATGGAGGAGGTTGTACACACAGAAGCAGTCTCGACTATC
TGGCGAACGCTTTCAGAGTAAAGCTCAGTCTTCCCGATTGGTACCCTAATGCGGAAGCTGCCGAGTTCT
GTTTAAACAGTGTATCTGCATCCACTTGAAATCCAACACTGACAAGTTTTACCTGCTGTCTCATGACC
CGGAAGCTCTTTGCTTTAGCCAGAGGAGAGTGCATGGAGGACAATCCTGACAGTTTAGTGAATCAAGAAG
TCCTTACCCTGGGCAGCTCTTCTGATGTTTCTGAAGGAAAAGATGGAGAATTGGCTACTGTCTATTAA
AATAGCTTTAGATAAAAAGGGCTCAGAAGACCAATGTTTCCATAAACAATGAAAATTTGATGAAGATTTT
AGTATGGGAACAGAGCTAACAAGACCATTTGAATATCTTCTTGTACTGGAAATCTGCGTCTAAAACAG
GTCTTGGCTTCATGCAGGATTCTGGCCTGTGTGTGTGGCTGACAAGCTGAACTTCATTGCTATCTCTC
CCATTTCCGCTGTGTGCACAGAGGGCTGACTTTGCCAAGATGAGGACCACCACCGTGGCGAAGCTGCTG
CCAGAATCCTGGGGCTTCTCTGCCCTGTGCACACCCAGACGGGGCACCGTGTGGGCTGCTGAACCACC



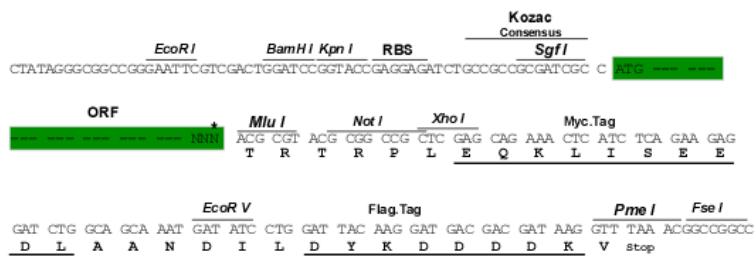
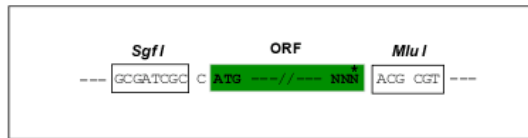
[View online >](#)

Restriction Sites:

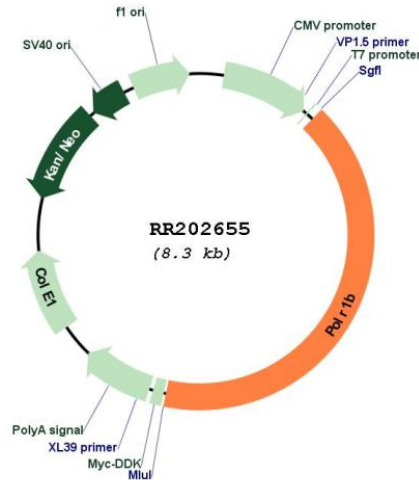
SgfI-MluI

Cloning Scheme:

Cloning sites used for ORF Shuttling:



* The last codon before the Stop codon of the ORF

Plasmid Map:


ACCN: NM_031773

ORF Size: 3405 bp

OTI Disclaimer: The molecular sequence of this clone aligns with the gene accession number as a point of reference only. However, individual transcript sequences of the same gene can differ through naturally occurring variations (e.g. polymorphisms), each with its own valid existence. This clone is substantially in agreement with the reference, but a complete review of all prevailing variants is recommended prior to use. [More info](#)

OTI Annotation: This clone was engineered to express the complete ORF with an expression tag. Expression varies depending on the nature of the gene.

Components: The ORF clone is ion-exchange column purified and shipped in a 2D barcoded Matrix tube containing 10ug of transfection-ready, dried plasmid DNA (reconstitute with 100 ul of water).

Reconstitution Method:

1. Centrifuge at 5,000xg for 5min.
2. Carefully open the tube and add 100ul of sterile water to dissolve the DNA.
3. Close the tube and incubate for 10 minutes at room temperature.
4. Briefly vortex the tube and then do a quick spin (less than 5000xg) to concentrate the liquid at the bottom.
5. Store the suspended plasmid at -20°C. The DNA is stable for at least one year from date of shipping when stored at -20°C.

RefSeq: [NM_031773.1](#), [NP_113961.1](#)

RefSeq Size: 3769 bp

RefSeq ORF: 3408 bp

Locus ID: 83582

UniProt ID: [O54888](#)

Cytogenetics: 3q36

MW: 127.7 kDa

Gene Summary: mouse homolog is the second largest subunit of RNA polymerase I [RGD, Feb 2006]