

Product datasheet for **RR202612**

Rbl2 (NM_031094) Rat Tagged ORF Clone

Product data:

Product Type: Expression Plasmids
Product Name: Rbl2 (NM_031094) Rat Tagged ORF Clone
Tag: Myc-DDK
Symbol: Rbl2
Synonyms: Rb2
Vector: pCMV6-Entry (PS100001)
E. coli Selection: Kanamycin (25 ug/mL)
Cell Selection: Neomycin
ORF Nucleotide Sequence: >RR202612 representing NM_031094
Red=Cloning site Blue=ORF Green=Tags(s)

TTTTGTAATACGACTCACTATAGGGCGGCCGGAATTCGTCGACTGGATCCGGTACCGAGGAGATCTGCC
GCC**CGATCGCC**

ATGGCATCTGGAGGCAACCAGTCGTCACCTCCTCCTCCTGCTGCTGCAGCCAGCTCAGAGGAAGAGGAGG
AGGATGGCGACACCGGACCGGGCGCAGCCCGCAGGGTCCCCAAGCCATCAGATCCAACAGCGGTTTCGA
AGAGCTGTGCAGCCGCTTAACATGGACGAGGCGCACGGCCGAGGCCCTGGAGCAGCTACCGCAGCATG
AGCGAGAGCTACAGCTGGAGGAAATGATCTCCATTGGTTAGCATGTGCCTTATATGTGGCTTGCAGAA
AATCTGTCTACTGTGAGCAAAGGGACTGCTGAAGGAACTATGTGTCTTAACTAGAATCCTTCGATG
TTCTGAGCAAAGCCTAATTGAATTTTTTAAACAAGATGAAGAAGTGGGAAGATATGGCAAATTTACCCCA
CACTTCCGAGAACGAACCGAAAGATTAGAAAGAACTTCACTGTCTCCGCTGTGATCTTTAAGAAATATG
AACCCATTTTTCAAGACATTTTTAAATATCCCCAAGAAGAACAACCTCGCCAGCAAAGAGGAAGAAAGCA
GAGGCGACAGCCCTGTACCACATCTGAAATTTCCATTTTTGTTGGGTGCTTTTTATATACGCAAAAGGA
AACTTCCCATGATCAGTGATGATCTGGTCAATTCCTACCATCTCTGCTGTGTCACATGATTTAGTTT
ATGGAAATGCCCTACAATGCTCTAACCGAAAGAACTTGTGAACCCTAATTTTAAAGGCGTGTCCGAGGA
CGGCCACCCAGGACTCTCACCCGTCCTCTGATCCACCGTGTGTCATTGAGAAGCTCTGCTCCTTACAC
GACGGCTAGTGCTGGAGGCAAAGGGGATAAAGCAGCATTCTGAAACCCTACATTAGGAAGCTTTTTTG
AAAAGAAGCTCCTCAGGGGAAGGAAGAAATCTCACTGGCTTCTGGAGCCCGGAACTTCGCAGAGAG
CTTTAAGGCTGTTAATAAGGCGTATGAAGAATACGTGTTAGCCACTGGGAGTCTGGATGAGCGGATATTT
CTTGGCGAGGATGCGGAGGAGGAAGTTGGAACCTTCTCACGGTGTGTAAGTGTGCTCGGGCACAGAGA
GTGCCGAACGAACGCAGATGAGAGACATCTGCAGCAGCATCTTGACAAGTCTAAAACACTTAGAGTCTG
CAACCCACTGACTGGCGTGGGTATGTTCAAGGAAACAGCCCTTGTGTGACTCCCGTCTCCACAGCAACA
CACAGCCTGAACCGTCTCACACCATGTGCGCCGCTCAGGAATGCACCCAGTGAGAAGCTAGAACAGA
TACTCAGGTCATGTTCCGAGATCCGACTCGGGCTATCGCTGACAGGTTGAGAGAGATGTATGAAATATA
TTCTCAGCATTTCCAGCCAGACGAGAATGTTAGTAATTGTGCTAAAGAAATGGCCAAACAACACTTTCGT
TTTGCAGAAATGCTTTACTATAAAGTATTAGAGTCTGTTATTGAGCAAGAACAGAAGAGATTGGGAGACA



TGGACTTATCTGGTGTCTGGAGCAAGATGCATCCATAAGTCACTCCTGGCCTGCTGCCTGAGGTGGT
 CGCTTTTTCTATAAGCCTCTGGAAATTTCCATTTATTGCTGAAATATTTGATGTACCACATTATCAT
 TTTTATAAGGTAATAGAAGTATTATTAGAGCAGAAGACGGTCTTTGCGAGAGAAGTGGTCAAACACCTCA
 ATCAGATTGAAGAACAATTTTAGACCCTGGCATGGAAAACCAAGTCCCCTGTGGGATAGAATTAG
 AGATAATGAAAACAGAGTCCCTACATGTGAAGAGGTTACACCACCTCACAACTAGAGAGAACAGATGAA
 ATCTATATTGCTGGCTCTCCCTTAACCTCGAGAAGGGTGGTGAAGTTCGCACTGATGCTGGAGGACTTG
 GAAGAAGTGTGACATCTCAACCACTGTATGACAGGTACAGTCCCAACAGTCACTACTAGTAGAAG
 GCGGCTATTTGAGAGTGACAGTCCCTCTGAAGGAAGCACGGCTGGGCGCATCCCCCACAACCCCTAGTC
 AATGCTGTCCCTGTGAGAATGTATCTGGGAGACTGTTTCTGTACACCAGTTCCTGGACAGACCTTGG
 TCACCATGGCAACAGCCACTGTACAGCCAACAATGGACAAAACAGTGACCATTCCAGTACAAGGTATTGC
 CAACGAAAATGGAGGGATAACATTTCTCCAGTCCAAGTGAATGTTGGGGCCAGGCACAGGCTGTGACT
 GGCTCTATCCAGCCCTCAGTGTCAAGCGCTGGCTGGAAGTCTGAGTTCACACAGGTGACAGGAACAA
 CTTTGCAAGTCCCGGTCCGGTGGCCATTCAACAAATTTCCCTGGAGGACAACAGCAGAACCAAGGCCA
 GCCGTTAACCAGCAGCAGTATCAGGCCTCGGAAGACTAGTCTCTATCACTTTTCTTTAGAAAGGTTTAC
 TACTTAGCTGGTGTCCGCTTCGAGACCTTTGTACAAAACAGTATTTTCCAGATGAAGTGGAGAAAAAA
 TTTGGACCTGCTTTGAATTCTCTATAGTCCAGTGTCTGAACTTATGATGGACAGACATCTGGACCAAGT
 GTTAATGTGTGCCATTTACGTGATGGCAAAGGTCACAAAAGAAGCAAGTCTTCCAGAATATCATGCGC
 TGTACAGGACTCAGCCACAGGCCCGGAGCCAGGTATACAGAAGTGTCTTGATAAAAGGGAAAAAGAAGAA
 ATTCTGGCAGCTGTGAGAACAGAAGCCATCAGAATTTCTCAACAGAACTAAATACAGACAGAGCCAGTAG
 AGACTCCAGTCCAGTTATGAGGTCAAACAGCACCTTACCAGTTCACAGCCAGCAGTCCCCTCTTACA
 CCAACTCGACTCACAGGTGCCAACAGTGACATTGAAGAGGAGGAAAGAGGAGACCTCATTAGTTTACA
 ACAACACTACAGGAAACAAATCCAACGTTTGCATGAAGTACTCACAGGCAAACTCCCAATGGACAC
 CCCTCCCCTGTCTCCCTATCCGTTTGTGAAGAAGGGCTCCCCTCGCCGAGTACAGTTATCTCAAAGTCA
 CCTATCTACATTTCCCCACATAAAAACGAAGCAATGCTTTCTCCTCGAGAGAAGATTTTTACTACTTCA
 GCAACAGCCCATCAAAGAGACTGAGAGAAATTAACAGTATGATACGGACAGGAGAGACTCCAACAAAAA
 GAGAGGGATTCTCTGGACGATGGAAGTGAATCGCCTGCAAAAAGAATTTGCCAGAAAATCATTCTGCT
 CTGTTACGTCGTCTCAAGATGTAGCTAATGACCGAGGTTACAC

ACGCGTACGCGGCCGCTCGAGCAGAACTCATCTCAGAAGAGGATCTGGCAGCAATGATATCTGGATT
 ACAAGGATGACGACGATAAGGTTTAA

Protein Sequence:

>RR202612 representing NM_031094
 Red=Cloning site Green=Tags(s)

MASGGNQSSPPPPAAAASSEEEEEEDGDTADRAQPAGSPSHQIQQRFEELCSRLNMDEAARAEAWSSYRSM
 SESYTLLEGNDLHWLACALYVACRKSVPVTSKGTAEKNYVSLTRILRCSEQSLIEFFNKMKKWEDMANLPP
 HFRERTERLERNFTVSAVIFKKYEPIFQDIFKYPQEEQPRQRGRKQRRQPCTTSEIFHFCWVLFYIYAKG
 NFPMSIDDLVNSYHLLCALDLVYGNALQCSNRKELVNPVFKGVSSEDPHPRDSDPPCVIEKLSLH
 DGLVLEAKGIKQHFWKPYIRKLFKLLRGKEENLTGFLEPGNFAESFKAVNKAYEYVLTGSLDERIF
 LGEDAEVEVGTFSRCVSAASGTESAERTQMRDILQQHLDKSKTLRVCNPLTGVRYVQENSPCVTPVSTAT
 HSLNRLHTMLAGLRNAPSEKLEQILRCSRDPTRAIAADRLREMYEIIYSQHFQPDENVSNCAKEMANKHFR
 FAEMLYYKVLSEVIEQEQRKLDGMDLQVLEQDAFHKSLACCLEVVAFSYKPPGNPFIAEIFDVPYHY
 FYKIVIEVIRAEDGLCREVVKHLNQIEEQILDHLAWKTKSPLWDRIRDNENRVPTCEEVTPPHNLERTDE
 IYIAGSPLTPRRVGEVRTDAGGLGRSVTSPTTLYDRYSSTVSTTRRRLFESDSPSEGSTAGRIPPQPLV
 NAVPVQNVSGETVSVTPVPGQTLVTMATATVTANNGQTVTIPVQGANENGGITFFPVQVNVGGQAQAVT
 GSIQPLSAQALAGSLSSQVVTGTLQVPGPVAIQIISPGGQQQNGQPLTSSSIRPRKTSLSLFFFRKVV
 YLAGVRLRDLCTKLDISDELKRIWTCFEFSIVQPELMDRHLQLLMCAIYVMKVTKEDKSFQIMR
 CYRTQPQARSQVYRSVLKIGKRRNSGSCENRSHQNSPTELNDRASRDSPPVMSNSTLPPVQPSAPPT
 PTRLTGANSIDIEEEERGDLIQFYNNIYRKQIQTFAMKYSQANSQMDTPPLSPYPFVRTGSPRRVQLSQSH
 PIYISPHKNEAMLSPREKIFYFYSNSPSKRLREINSMIRTGETPTKKRGILLDDGSESPAKRICPENHSA
 LLRRLQDVANDRGSH

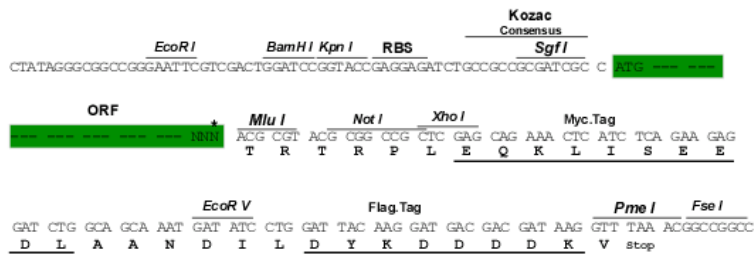
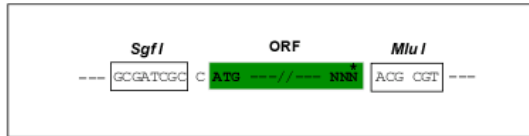
TRTRPLEQKLISEEDLAANDILDYKDDDDKV

Restriction Sites:

Sgfl-MluI

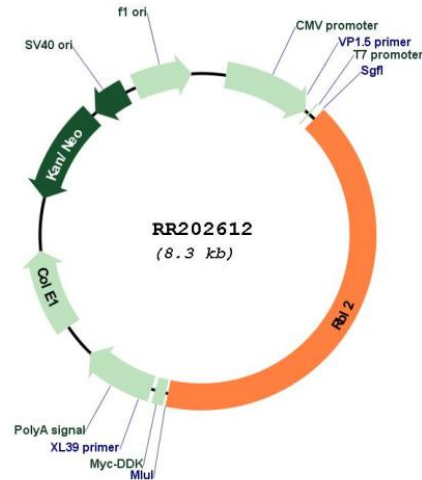
Cloning Scheme:

Cloning sites used for ORF Shuttling:



* The last codon before the Stop codon of the ORF

Plasmid Map:



ACCN: NM_031094

ORF Size: 3405 bp

OTI Disclaimer: The molecular sequence of this clone aligns with the gene accession number as a point of reference only. However, individual transcript sequences of the same gene can differ through naturally occurring variations (e.g. polymorphisms), each with its own valid existence. This clone is substantially in agreement with the reference, but a complete review of all prevailing variants is recommended prior to use. [More info](#)

OTI Annotation: This clone was engineered to express the complete ORF with an expression tag. Expression varies depending on the nature of the gene.

Components: The ORF clone is ion-exchange column purified and shipped in a 2D barcoded Matrix tube containing 10ug of transfection-ready, dried plasmid DNA (reconstitute with 100 ul of water).

Reconstitution Method:

1. Centrifuge at 5,000xg for 5min.
2. Carefully open the tube and add 100ul of sterile water to dissolve the DNA.
3. Close the tube and incubate for 10 minutes at room temperature.
4. Briefly vortex the tube and then do a quick spin (less than 5000xg) to concentrate the liquid at the bottom.
5. Store the suspended plasmid at -20°C. The DNA is stable for at least one year from date of shipping when stored at -20°C.

RefSeq: [NM_031094.1](#), [NP_112356.1](#)

RefSeq Size: 4861 bp

RefSeq ORF: 3408 bp

Locus ID: 81758

UniProt ID: [O55081](#)

Cytogenetics: 19p11

MW: 127.8 kDa

Gene Summary: member of the retinoblastoma gene family; contains an E1A-binding domain [RGD, Feb 2006]