

Product datasheet for **RR202551**

Blk (NM_001025751) Rat Tagged ORF Clone

Product data:

Product Type:	Expression Plasmids
Product Name:	Blk (NM_001025751) Rat Tagged ORF Clone
Tag:	Myc-DDK
Symbol:	Blk
Synonyms:	MGC112647
Vector:	pCMV6-Entry (PS100001)
E. coli Selection:	Kanamycin (25 ug/mL)
Cell Selection:	Neomycin



[View online »](#)

ORF Nucleotide Sequence:

>RR202551 representing NM_001025751
 Red=Cloning site Blue=ORF Green=Tags(s)

TTTTGTAATACGACTCACTATAGGGCGGCCGGGAATTCGTCGACTGGATCCGGTACCGAGGAGATCTGCC
 GCC**CGCATCGCC**

ATGGGGCTACTGAGCAGCAAGAGGCAGATCAGCGAGAAGAGCAAGAGCTGGAGCCCTGTGAAGGCCCGCG
 CCCAGGGCAAGGTACCCCGCCCTGCCACCCCTGGTTGTCTCAACCACCTCCCTCCTCATCTCCTAA
 CCAGCACCCAGATGAAGAGGAGCGTTTTGTGGTGGCCCTGTTTACTATGCCGCTGTGAATGACAGGGAC
 CTGCAAGTGCTAAAGGGAGAGAAGCTCCAAGTCTTGAAGAGCACTGGAGACTGGTGGTTGGCCAGGTAC
 TCGTCACAGGAAGAGAAGGCTATGTGCCAGCAACTTTGTGGCCCACTAGAGACCTGGAAGTAGAAAA
 ATGTTTCTCAGGACCATTAGCCGGAAGGATGCTGAGAGGCAGTTGCTGGCTCCAATGAACAAAGCCGGC
 TCCTTTCTCATCAGAGAGTGAAGCAATAAAGGTGCCTTTCCCTATCTGTGAAAGACGTCACCAGCC
 AGGGGAGATGGTCAAGCACTATAAGATCCGCTACTGGACAATGGAGGCTATTACATCTCGCCCCGGAT
 CACCTTCCCCACCCTCCAGGCCCTGGTGCAGCACTATTCTGAGAAAGGGACGGTTTGTGTGAGAAGTTG
 ACCTGCCTGTGTGAACCCAGCCCCGAAGAATCCCTGGGCCAAGACGAATGGGAAATCCCAGGCAGT
 CCCTCAAGTTGGTCCGGAACCTGGGTCTGGGCAGTTGGTGAAGTCTGGATGGGTTATTACAAAAATAA
 CATGAAGTGGCAATCAAGACCTGAAGGAGGGAACCATGTCTCCGGAAGCTTTCCTGGGTGAGGCCAAC
 GTGATGAAAACCTGCAGCATGAGAGGCTGGTCCGTCTCTACGCCGTGGTACCAGAGAGCCCATCTACA
 TTGTACGGAATACATGGCCAGAGGATGCTTGTGGATTTTCTGAAGACCGATGAAGGTAGCAGATTGTC
 CCTTCAAAGGCTGATTGACATGTGAGCCAGGTTGAGAAGGGATGGCTTACATAGAGCCGATGAATTCC
 ATCCACCGTGACCTGCGGGCAGCCAACATCCTGGTGTCTGAGACCTTGTGCTGAAAAATCGCTGACTTGC
 GCTTGGCCAGGATCATCGACAGTGAATACTGCCCAAGAGGGGCCAAGTTCCCATCAAGTGGACTGC
 CCCAGAAGCCATCCACTTCGGGGTGTTCACATCAAGGCTGATGTGGTCCCTTTGGAGTCTTGCTGATG
 GAGATTGTACATATGGCGTGTTCCTACCCAGGAATGAGCAACCCTGAGGTATCCGTAGCCTGGAGC
 ATGGCTACCGAATGCCATGCCAGAGACATGTCCGCCTGAGTTGTACCATGACGTCATCACTGAGTGCTG
 GCGAGGCCGACCTGAGGAGCGGCCTACCTTGTGAGTTCTGCAGTCAGTGTGGAGGACTTCTACACAGCC
 ACGGAGGGCCAATATGAGCTGCAGCT

ACGCGTACGCGGCCGCTCGAGCAGAACTCATCTCAGAAGAGGATCTGGCAGCAATGATATCCTGGATT
 ACAAGGATGACGACGATAAGGTTTAA

Protein Sequence:

>RR202551 representing NM_001025751
 Red=Cloning site Green=Tags(s)

MGLLSSKRQISEKSKSWSPVKARAQKVPPLPPLVVFNHLPPSPNQHPDEEERFVVALFDYAAVNDRD
 LQVLKGEKLQVLKSTGDWWLARSLVTGREGYVPSNFVAPVETLEVEKWFRTISRKDAERQLLAPMNKAG
 SFLIRESESNKGAFSLVKDVTSSQEMVKHYKIRSLDNGGYYISPRITFPTLQALVQHYSEKGDGLCQKL
 TLPCVNPAPKNPWAQDEWEIPRQSLKLRKLGSGQFGEVWMGYKNNMKVAIKTLKEGTMSPEAFLEGEAN
 VMKTLQHERLVRLYAVVTREPIYIVTEYMARGCLLDLFLKTDEGSRLSLPRLIDMSAQVAEGMAYIERMNS
 IHRDLRAANILVSETLCKIADFLARIIDSEYTAQEGAKFPKWTAPEAIFHGVFTIKADVWSFGVLLM
 EIVTYGRVPYPGMSNPEVIRSLEHGMRPCPETCPPEL YHDVITECWRGRPEERPTFEFLQSVLEDFYTA
 TEGQYELQP

TRTRPLEQKLISEEDLAANDILDYKDDDDKV

Restriction Sites:

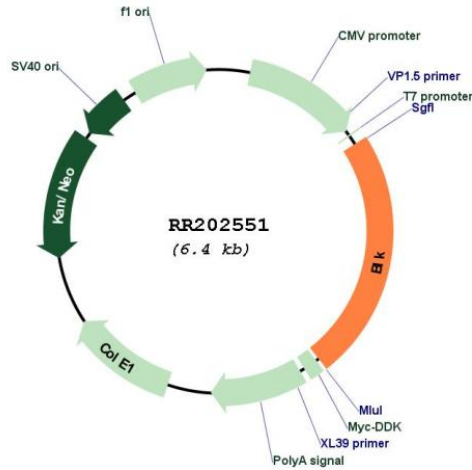
SgfI-MluI

Cloning Scheme:

Cloning sites used for ORF Shutting:



* The last codon before the Stop codon of the ORF

Plasmid Map:


ACCN: NM_001025751

ORF Size: 1497 bp

OTI Disclaimer: The molecular sequence of this clone aligns with the gene accession number as a point of reference only. However, individual transcript sequences of the same gene can differ through naturally occurring variations (e.g. polymorphisms), each with its own valid existence. This clone is substantially in agreement with the reference, but a complete review of all prevailing variants is recommended prior to use. [More info](#)

OTI Annotation: This clone was engineered to express the complete ORF with an expression tag. Expression varies depending on the nature of the gene.

Components: The ORF clone is ion-exchange column purified and shipped in a 2D barcoded Matrix tube containing 10ug of transfection-ready, dried plasmid DNA (reconstitute with 100 ul of water).

Reconstitution Method:

1. Centrifuge at 5,000xg for 5min.
2. Carefully open the tube and add 100ul of sterile water to dissolve the DNA.
3. Close the tube and incubate for 10 minutes at room temperature.
4. Briefly vortex the tube and then do a quick spin (less than 5000xg) to concentrate the liquid at the bottom.
5. Store the suspended plasmid at -20°C. The DNA is stable for at least one year from date of shipping when stored at -20°C.

RefSeq: [NM_001025751.1](#), [NP_001020922.1](#)

RefSeq Size: 2290 bp

RefSeq ORF: 1500 bp

Locus ID: 364403

Cytogenetics: 15p12

MW: 56.6 kDa